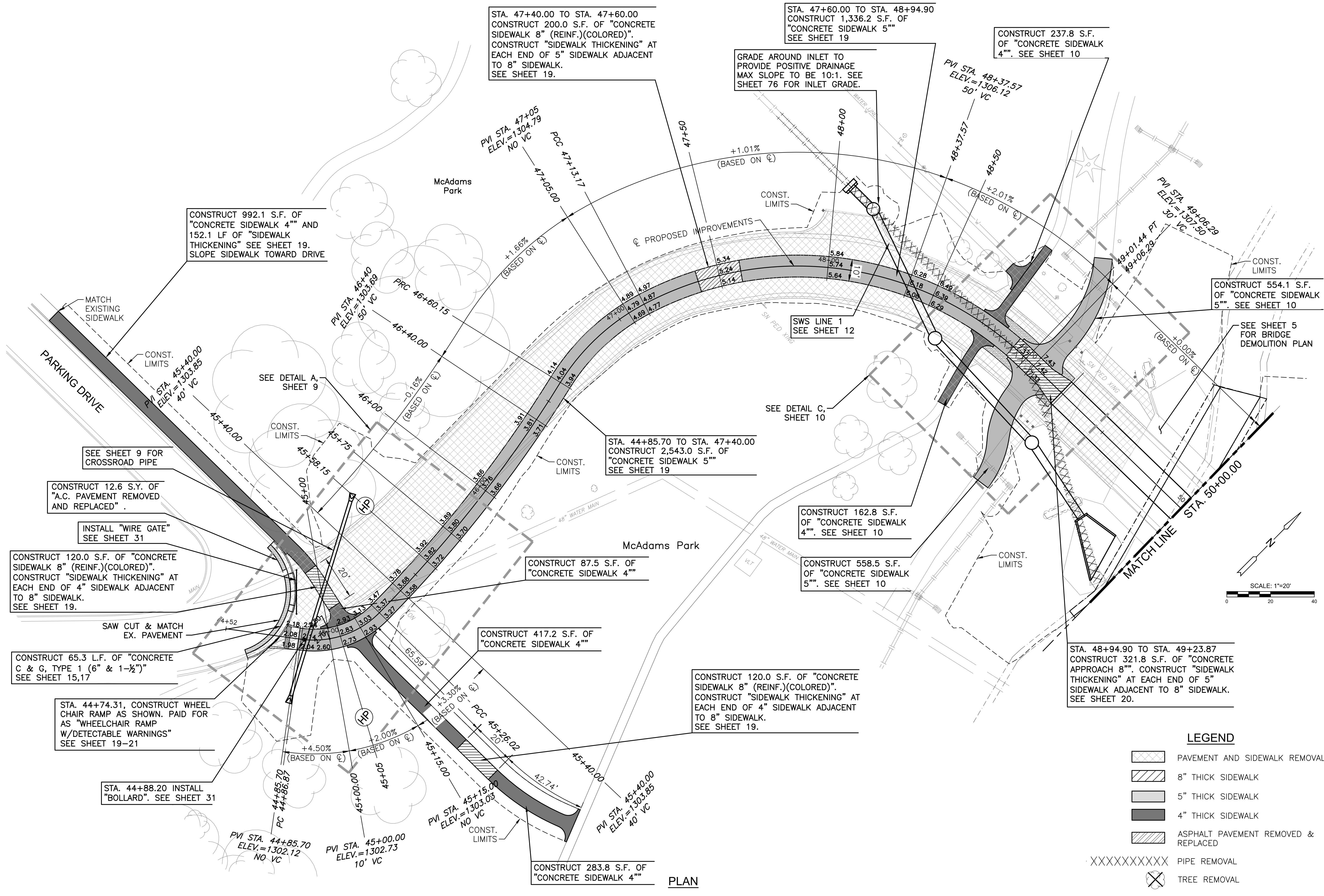


PLOTTED: Friday, August 01, 2025 @ 09:49:01
 J:\PROJECTS\2023\20230810\10431_COW_WDG_BRIDGE REPLACEMENT AT 15TH STREET\100_230431_CADD\SHETS\06_CIVIL\PAV\230431_PAVING PLANS.DWG



STA. 47+40.00 TO STA. 47+60.00
 CONSTRUCT 200.0 S.F. OF "CONCRETE
 SIDEWALK 8" (REINF.)(COLORED)".
 CONSTRUCT "SIDEWALK THICKENING" AT
 EACH END OF 5" SIDEWALK ADJACENT
 TO 8" SIDEWALK.
 SEE SHEET 19.

STA. 47+60.00 TO STA. 48+94.90
 CONSTRUCT 1,336.2 S.F. OF
 "CONCRETE SIDEWALK 5"
 SEE SHEET 19

CONSTRUCT 237.8 S.F.
 OF "CONCRETE SIDEWALK
 4"". SEE SHEET 10

CONSTRUCT 992.1 S.F. OF
 "CONCRETE SIDEWALK 4"" AND
 152.1 LF OF "SIDEWALK
 THICKENING" SEE SHEET 19.
 SLOPE SIDEWALK TOWARD DRIVE

GRADE AROUND INLET TO
 PROVIDE POSITIVE DRAINAGE
 MAX SLOPE TO BE 10:1. SEE
 SHEET 76 FOR INLET GRADE.

CONSTRUCT 554.1 S.F.
 OF "CONCRETE SIDEWALK
 5"". SEE SHEET 10

STA. 44+85.70 TO STA. 47+40.00
 CONSTRUCT 2,543.0 S.F. OF
 "CONCRETE SIDEWALK 5"
 SEE SHEET 19

CONSTRUCT 162.8 S.F.
 OF "CONCRETE SIDEWALK
 4"". SEE SHEET 10

CONSTRUCT 558.5 S.F.
 OF "CONCRETE SIDEWALK
 5"". SEE SHEET 10

STA. 48+94.90 TO STA. 49+23.87
 CONSTRUCT 321.8 S.F. OF "CONCRETE
 APPROACH 8"". CONSTRUCT "SIDEWALK
 THICKENING" AT EACH END OF 5"
 SIDEWALK ADJACENT TO 8" SIDEWALK.
 SEE SHEET 20.

CONSTRUCT 120.0 S.F. OF "CONCRETE
 SIDEWALK 8" (REINF.)(COLORED)".
 CONSTRUCT "SIDEWALK THICKENING" AT
 EACH END OF 4" SIDEWALK ADJACENT
 TO 8" SIDEWALK.
 SEE SHEET 19.

CONSTRUCT 417.2 S.F. OF
 "CONCRETE SIDEWALK 4""

CONSTRUCT 120.0 S.F. OF "CONCRETE
 SIDEWALK 8" (REINF.)(COLORED)".
 CONSTRUCT "SIDEWALK THICKENING" AT
 EACH END OF 4" SIDEWALK ADJACENT
 TO 8" SIDEWALK.
 SEE SHEET 19.

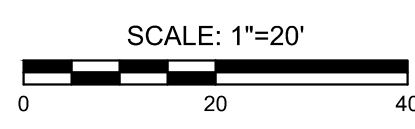
CONSTRUCT 65.3 L.F. OF "CONCRETE
 C & G, TYPE 1 (6" & 1-1/2")"
 SEE SHEET 15,17

STA. 44+74.31, CONSTRUCT WHEEL
 CHAIR RAMP AS SHOWN. PAID FOR
 AS "WHEELCHAIR RAMP
 W/DETECTABLE WARNINGS"
 SEE SHEET 19-21

STA. 44+88.20 INSTALL
 "BOLLARD". SEE SHEET 31

LEGEND

- PAVEMENT AND SIDEWALK REMOVAL
- 8" THICK SIDEWALK
- 5" THICK SIDEWALK
- 4" THICK SIDEWALK
- ASPHALT PAVEMENT REMOVED & REPLACED
- PIPE REMOVAL
- TREE REMOVAL



PLAN



**IMPROVEMENT PLANS FOR
 15TH STREET BRIDGE OVER THE
 WICHITA DRAINAGE CANAL**
 WICHITA, KS

PAVING PLAN
 STA. 44+98.58 TO
 STA. 50+00.00

PROJECT NO.
 472-2023-085864

SCALE
 1"=20'

DRAWN	DESIGNED	CHECKED
RAM	JRA	JRA

NO.	REVISION	DATE
0	ISSUED FOR CONSTRUCTION	8-1-2025

SHEET NO.
 7 OF 114

©2025 MKEC ENGINEERING, INC. ALL RIGHTS RESERVED WWW.MKEC.COM. THESE DRAWINGS AND THEIR CONTENTS, INCLUDING, BUT NOT LIMITED TO, ALL CONCEPTS, DESIGNS, & DETAILS ARE THE EXCLUSIVE PROPERTY OF MKEC ENGINEERING, INC. (MKEC), AND MAY NOT BE USED OR REPRODUCED IN ANY WAY WITHOUT THE EXPRESS CONSENT OF MKEC.