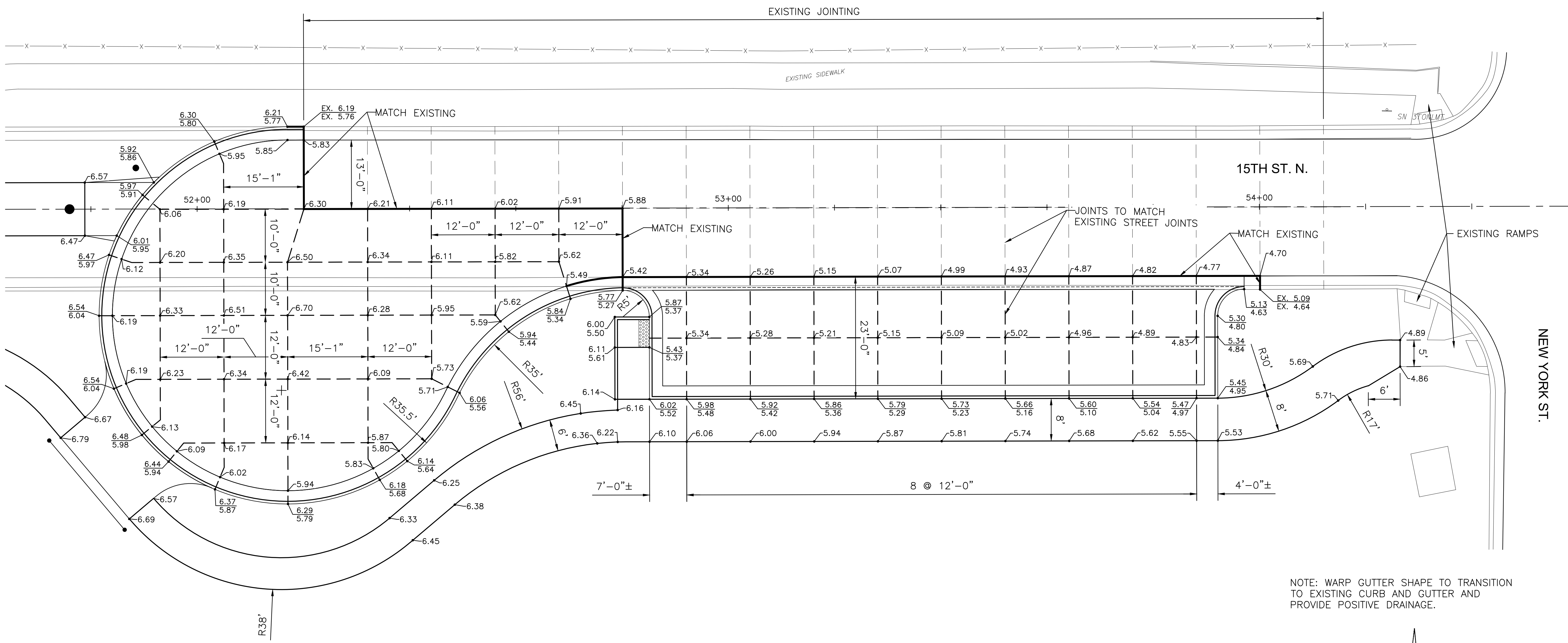
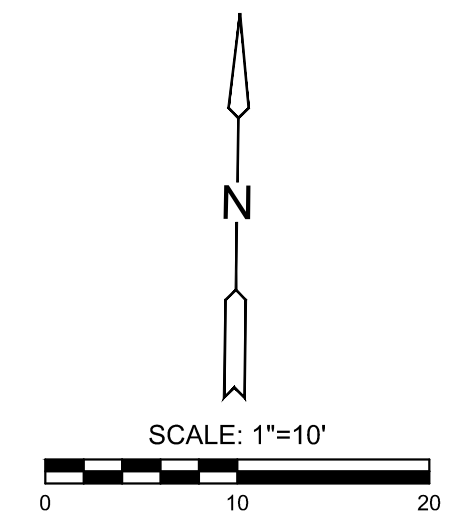


PLOTTED: Friday, August 01, 2025 @ 02:47PM

J:\PROJECTS\2023\20230810\0431_COW_WDG_BRIDGE REPLACEMENT AT 15TH STREET\00_230431_CADD\SHS\06_CIVIL\PAV\230431_JOINTING AND GRADING.DWG



NOTE: WARP GUTTER SHAPE TO TRANSITION TO EXISTING CURB AND GUTTER AND PROVIDE POSITIVE DRAINAGE.



- LEGEND**
- X.XX PROPOSED ELEVATION
 - X.XX PROPOSED TOP OF CURB
 - X.XX PROPOSED \square OF CURB



**IMPROVEMENT PLANS FOR
15TH STREET BRIDGE OVER THE
WICHITA DRAINAGE CANAL
WICHITA, KS**

**STREET JOINTING
AND GRADING PLAN**

PROJECT NO.	472-2023-085864	
SCALE	1"=10'	
DRAWN	DESIGNED	CHECKED
RAM	JRA	JRA
ISSUED FOR CONSTRUCTION	NO.	REVISION
8-1-2025		DATE
SHEET NO.		
16 OF 114		

©2025 MKEC ENGINEERING, INC. ALL RIGHTS RESERVED. WWW.MKEC.COM. THESE DRAWINGS AND THEIR CONTENTS, INCLUDING, BUT NOT LIMITED TO, ALL CONCEPTS, DESIGNS, & DETAILS ARE THE EXCLUSIVE PROPERTY OF MKEC ENGINEERING, INC. (MKEC), AND MAY NOT BE USED OR REPRODUCED IN ANY WAY WITHOUT THE EXPRESS CONSENT OF MKEC.