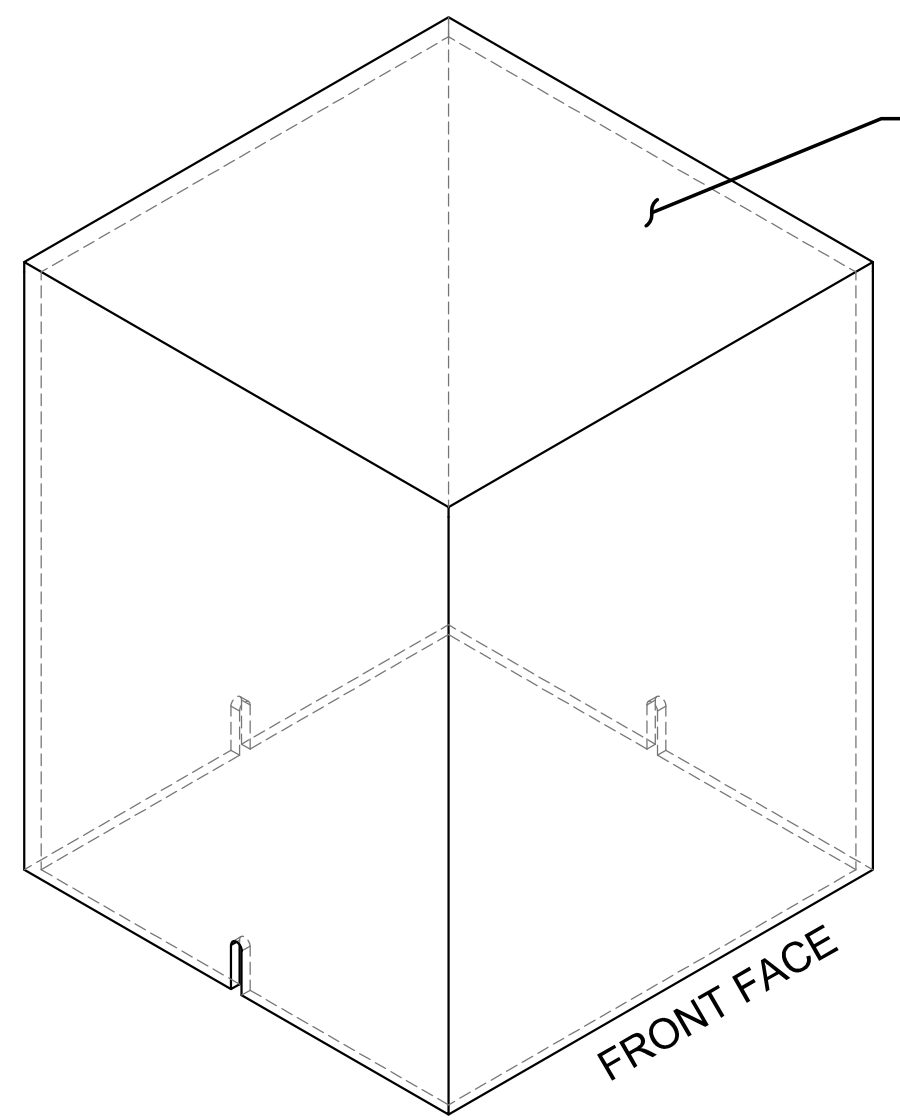
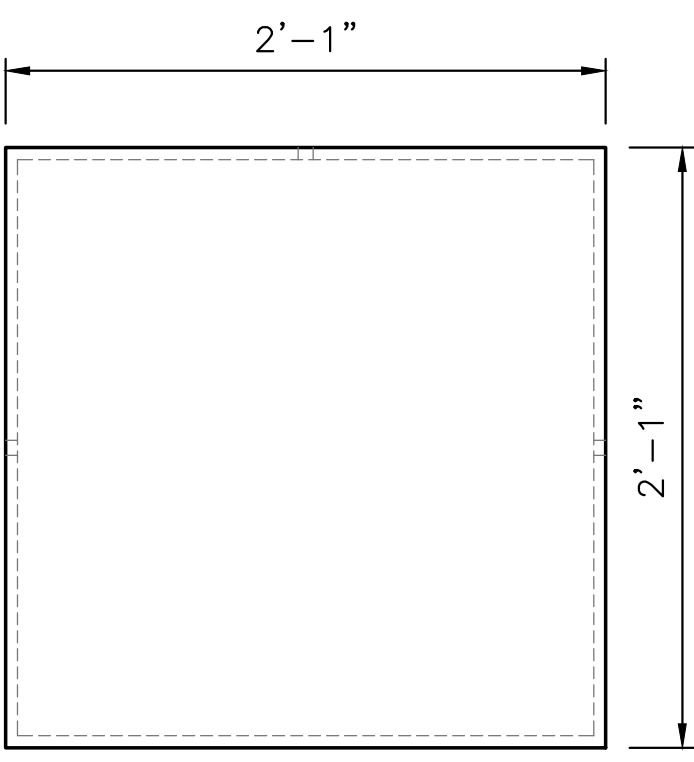


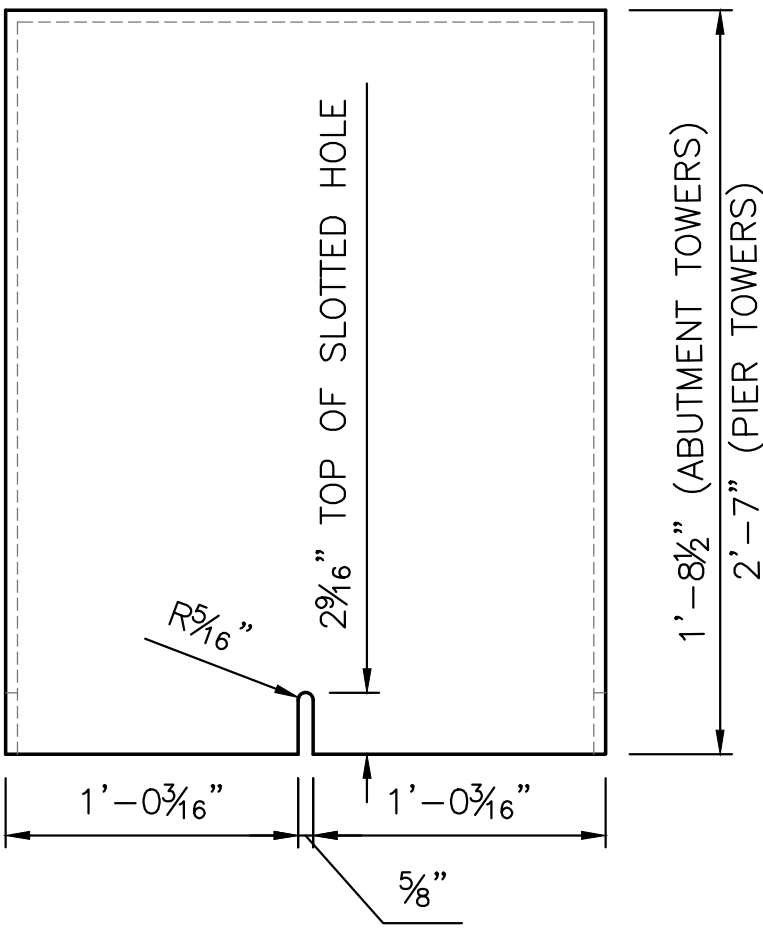
J:\PROJECTS\2023\20230110\0431_COW_WDG_BRIDGE REPLACEMENT AT 15TH STREET\00_230431_CAD\SHOTS\06_CIVIL\BRIDGE\230431_LIGHT_TOWER_DETAILS.DWG
 PLOTTED: Friday, August 01, 2025 @ 02:50PM
 ©2025 MKEC ENGINEERING, INC. ALL RIGHTS RESERVED WWW.MKEC.COM. THESE DRAWINGS AND THEIR CONTENTS, INCLUDING, BUT NOT LIMITED TO, ALL CONCEPTS, DESIGNS, & DETAILS ARE THE EXCLUSIVE PROPERTY OF MKEC ENGINEERING, INC. (MKEC), AND MAY NOT BE USED OR REPRODUCED IN ANY WAY WITHOUT THE EXPRESS CONSENT OF MKEC.



CAP ISOMETRIC VIEW



CAP TOP VIEW

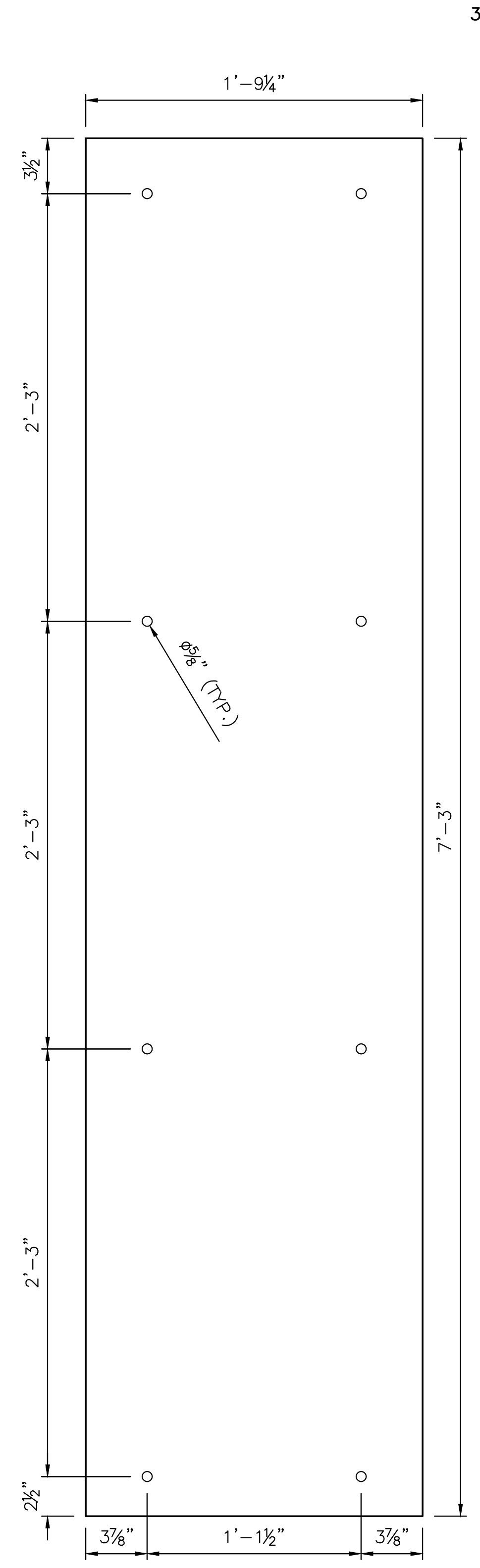


CAP SIDE VIEW

4 REQUIRED OF EACH SIZE
(SLOTTED HOLES ARE TO BE ON
BACK AND SIDES OF CAP ONLY)

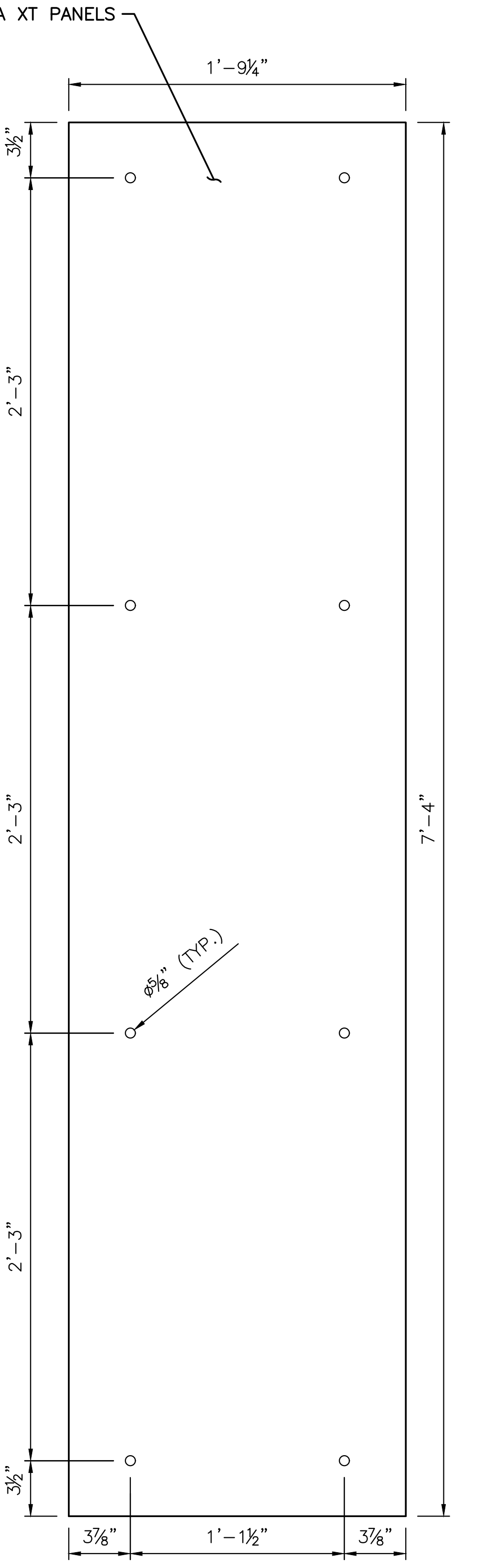
TOWER CAP

SCALE: 1'-1/2"=1'-0" (FULL SIZE)



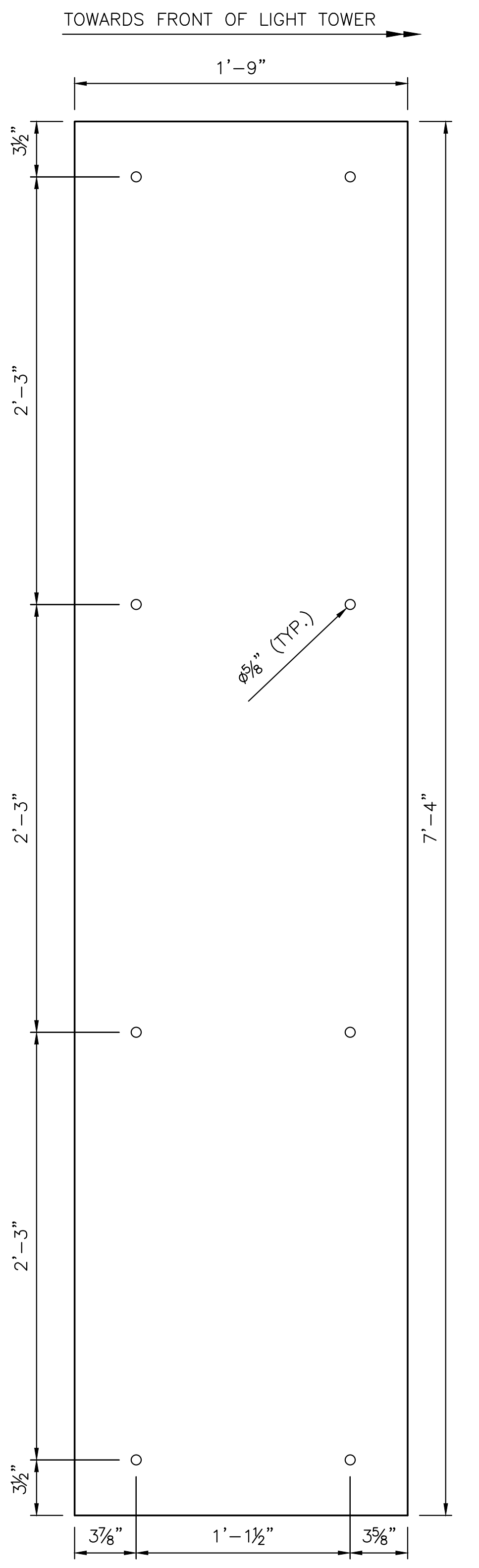
FRONT PANEL (TYP.)

8 PANELS REQUIRED
SCALE: 2"=1'-0" (FULL SIZE)



BACK PANEL (TYP.)

8 PANELS REQUIRED
SCALE: 2"=1'-0" (FULL SIZE)



SIDE PANEL (TYP.)

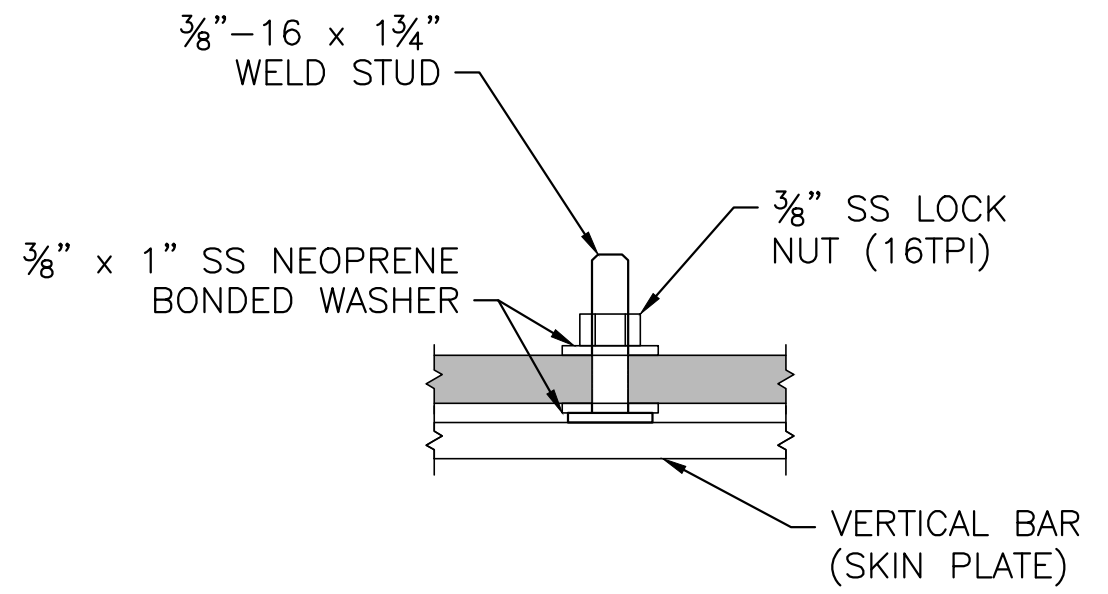
16 PANELS REQUIRED
SCALE: 2"=1'-0" (FULL SIZE)

PANEL HARDWARE LIST	
PART NAME	QUANTITY
SS NEOPRENE BONDED WASHER	304
SS LOCK NUT (16TPI)	280
3FORM PRESSURE FIT WASHER	512

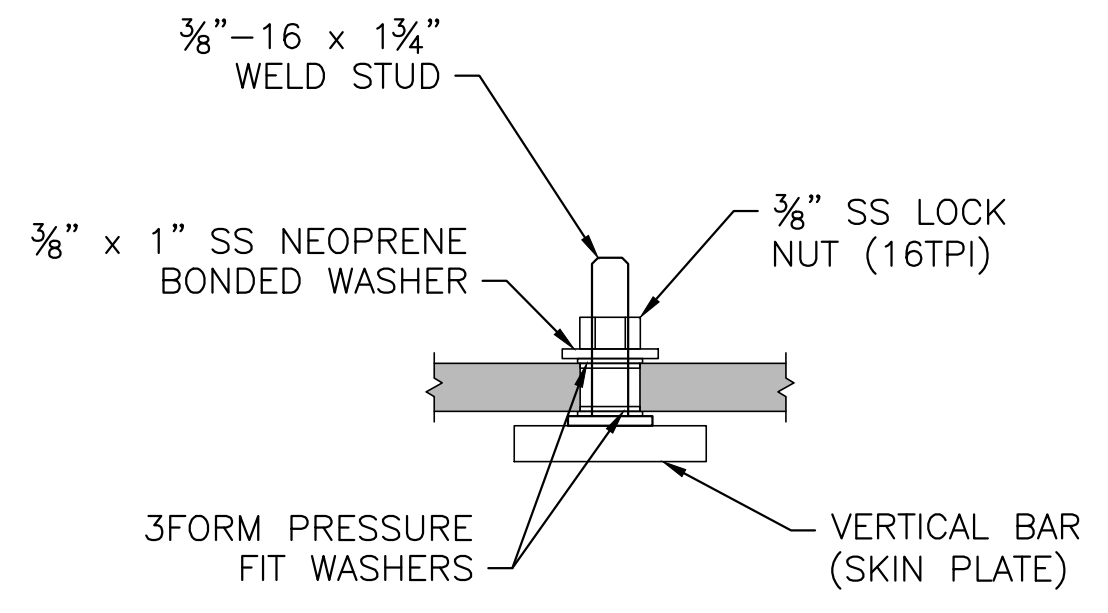
SEE DETAILS FOR HARDWARE SIZES.
*PANEL ATTACHMENT HARDWARE
SUBSIDIARY TO "LIGHT TOWERS"

NOTES:

- THE FABRICATOR SHALL CONSULT WITH THE PROJECT ARTIST REGARDING COLOR OF 3FORM MATERIALS FOR LIGHT TOWERS PRIOR TO ORDERING.
- THE FABRICATOR MAY ORDER 3FORM MATERIALS WITH ALL THE OPENINGS SHOWN. IF THE FABRICATOR ELECTS TO PROVIDE OPENINGS, THEY SHOULD CLOSELY FOLLOW THE MANUFACTURER'S RECOMMENDED PROCEDURES IN THE SUPPLIED FABRICATION MANUALS FOR EACH MATERIAL FOR DRILLING, CUTTING, CNC MACHINING, OR OTHER OPERATIONS REQUIRED FOR CONNECTIONS IN ORDER TO AVOID DAMAGE TO ORDERED MATERIALS.
- DO NOT OVER-TIGHTEN FASTENERS DURING INSTALLATION OF MATERIALS. REFER TO THE MANUFACTURER'S FABRICATION MANUAL FOR ADDITIONAL INFORMATION.



CAP FASTENING DETAIL
TOP VIEW
(CONNECTION TO SIDE AND
BACK SKIN PLATES ONLY)
SCALE 6"=1'-0" (FULL SIZE)



PANEL FASTENING DETAIL
TOP VIEW
(8 LOCATIONS PER SKIN PLATE,
THROUGH 5/8" DIA. HOLES IN PANELS)
SCALE 6"=1'-0" (FULL SIZE)



IMPROVEMENT PLANS FOR
**15TH STREET BRIDGE OVER THE
 WICHITA DRAINAGE CANAL**
 WICHITA, KS

**TOWER CAP AND
PANEL DETAILS**

PROJECT NO.	472-2023-085864	
SCALE		
DRAWN	DESIGNED	CHECKED
LDWG	DMU	JRA
NO.	REVISION	DATE
0	ISSUED FOR CONSTRUCTION	8-1-2025
SHEET NO.		
57 OF 114		