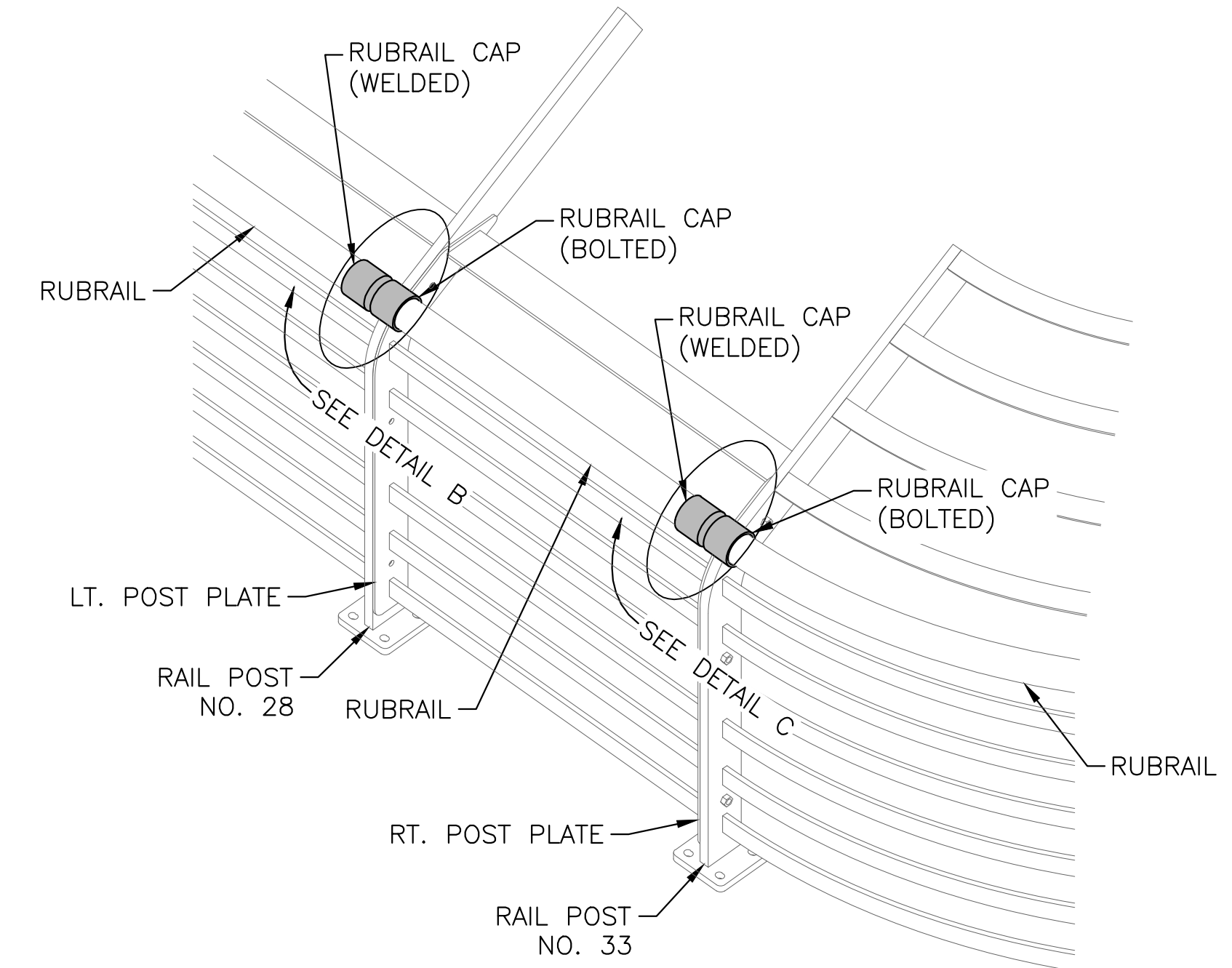


PLOTTED: Friday, August 01, 2025 @ 02:15PM

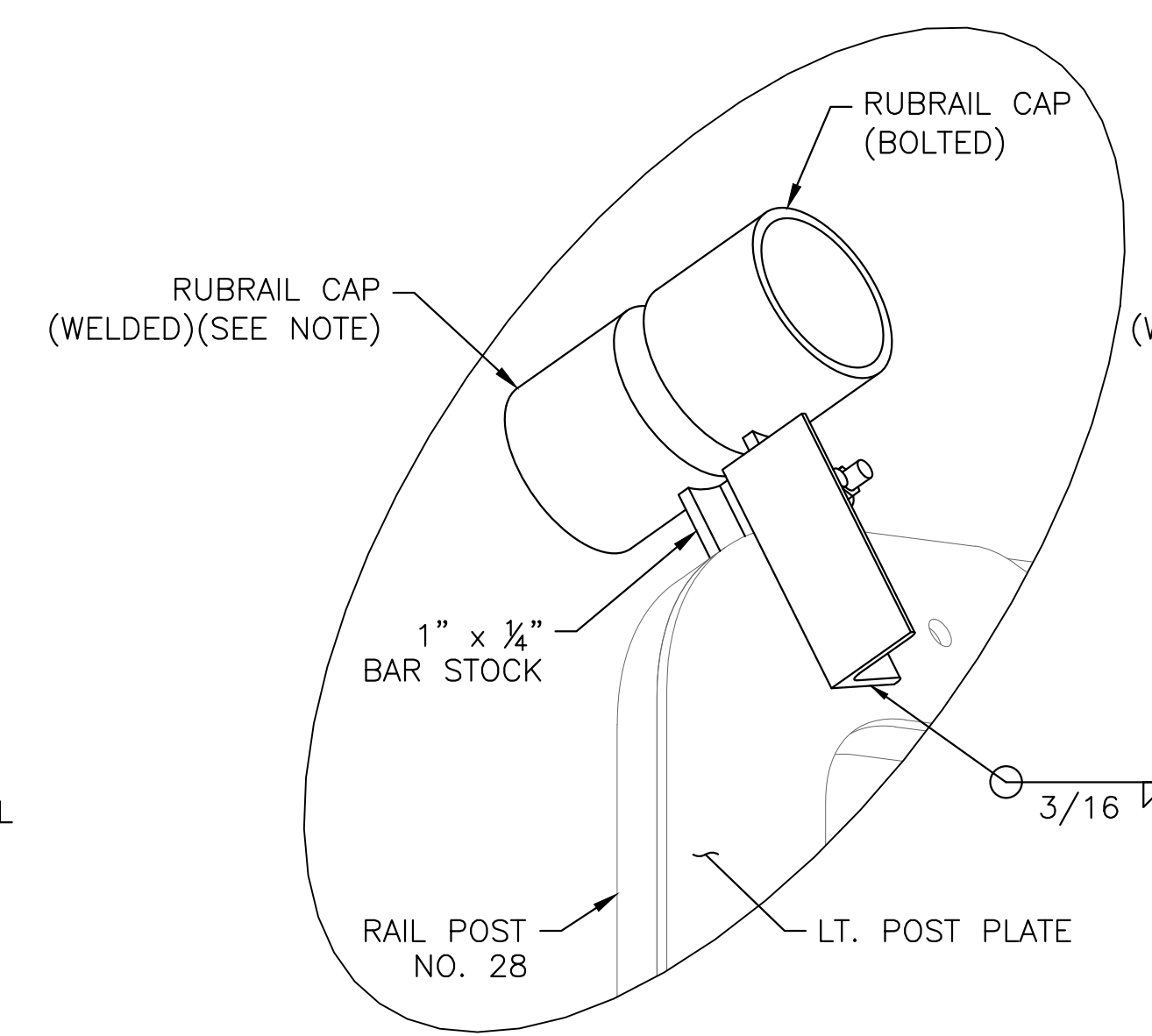
J:\PROJECTS\2023\20230810\0431_COW_WDGS_BRIDGE REPLACEMENT AT 15TH STREET\00-230431-CAD\SHOTS\08-CIVIL\BRIDGE\BRIDGE RAIL\230431_RUBRAIL DETAILS.DWG

IMPROVEMENT PLANS FOR
15TH STREET BRIDGE OVER THE WICHITA DRAINAGE CANAL
 WICHITA, KS

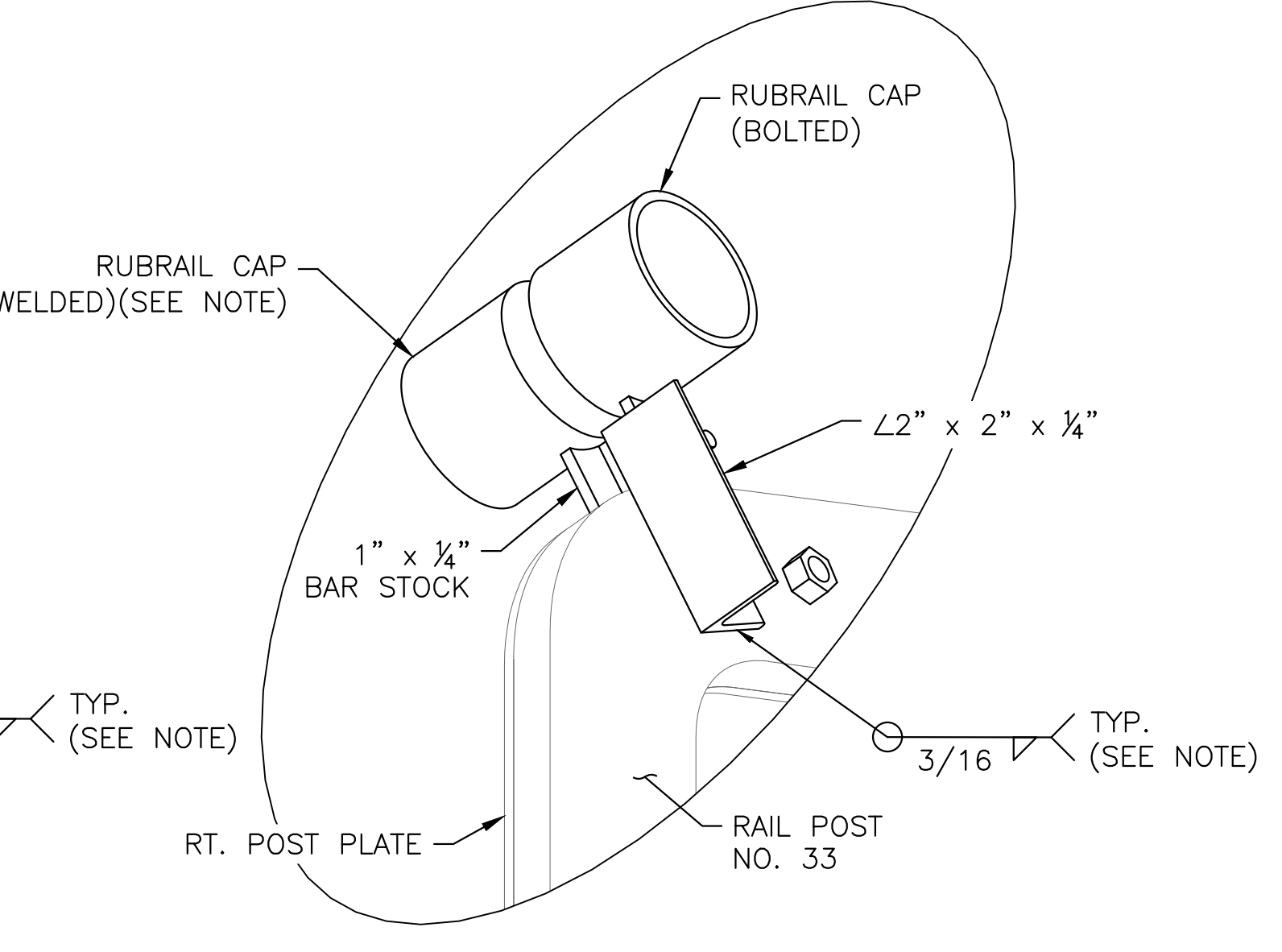


RUBRAIL CAP CONNECTION ISOMETRIC VIEW
 (ABUTMENT REMOVABLE PANEL, NE QUADRANT SHOWN)
 (NW, SW, & SE QUADRANTS SIMILAR)

NOTE:
 SEE SHEET 68, DETAIL A FOR WELDED RUBRAIL SLEEVE WELDS TO RAIL POSTS & POST PLATES. RUBRAIL CAP WELDS TO RAIL POSTS & POST PLATES IDENTICAL.



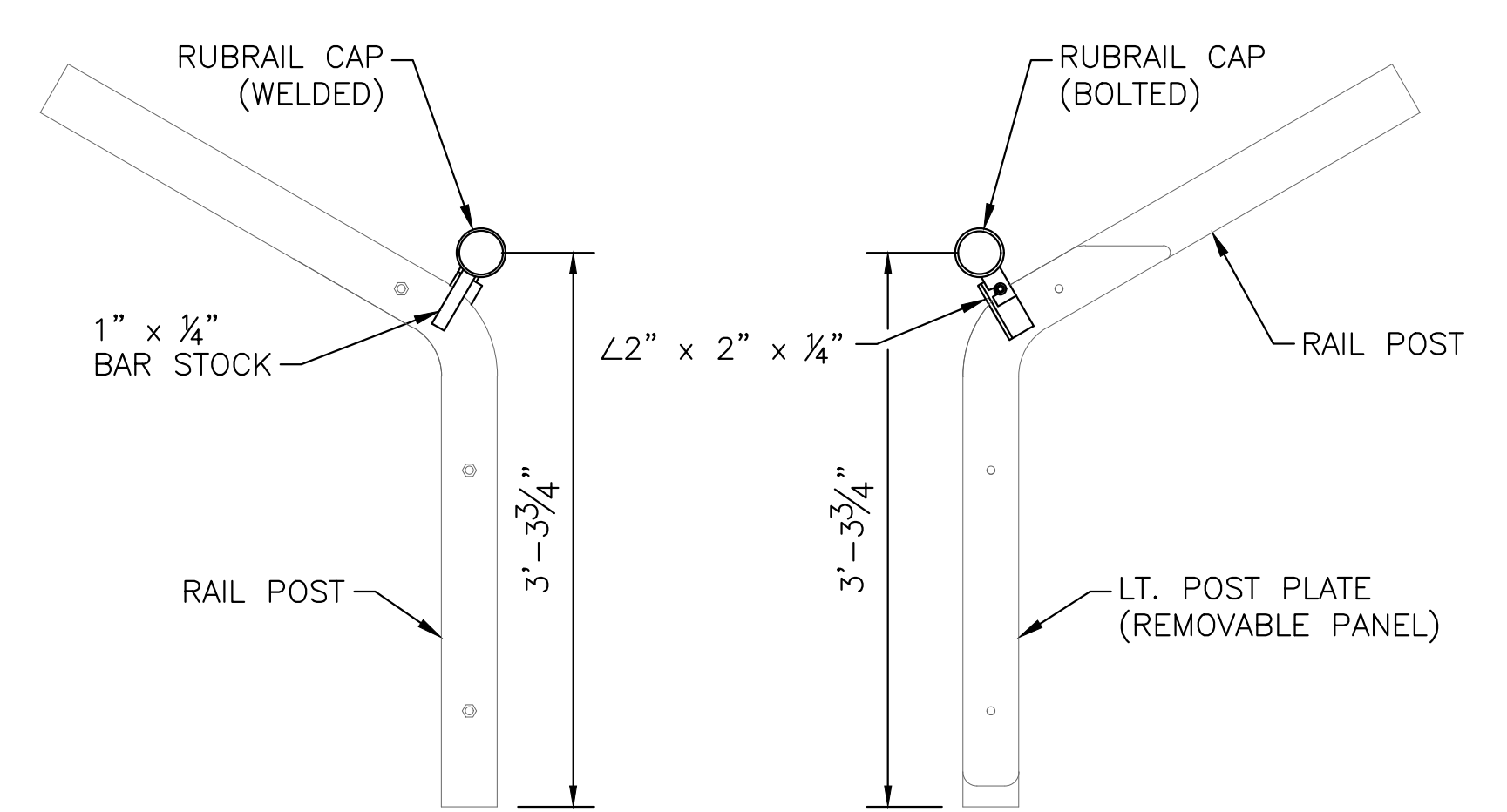
DETAIL B



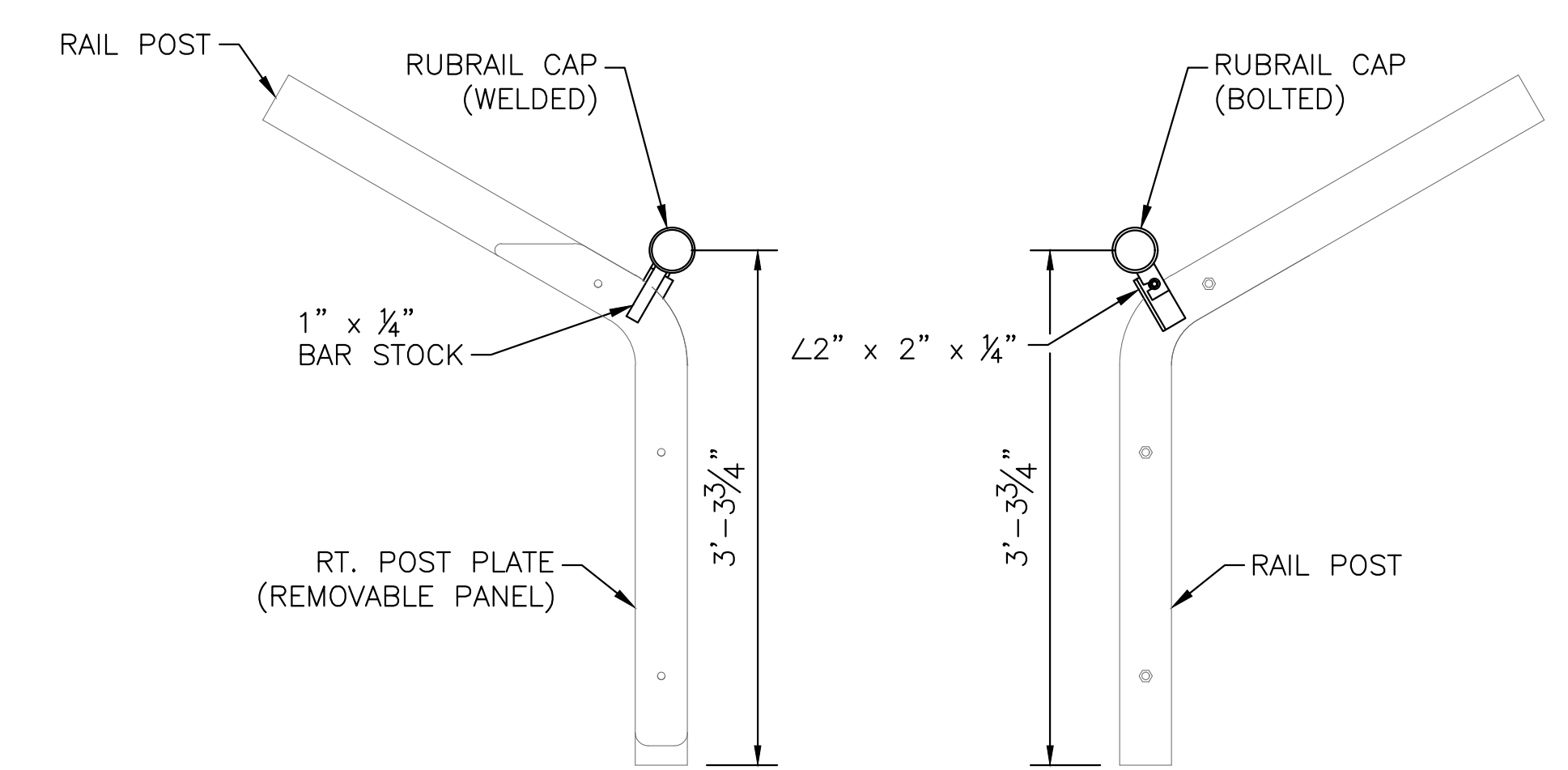
DETAIL C

RUBRAIL CAP CONNECTION DETAILS AT ABUTMENTS SHOWN. CAP CONNECTION DETAILS AT PIERS ARE SIMILAR. RUBRAIL CAPS SHALL BE LOCATED USING IDENTICAL DIMENSIONS TO THOSE SHOWN FOR SLEEVES ON EACH INDIVIDUAL POST TYPE (REFER TO SHEET 68).

NOTE:
 ALL AROUND WELDS ARE INTENDED TO BE SEAL WELDS TO PREVENT MOISTURE BETWEEN STEEL SURFACES THAT WILL NOT RECEIVE PAINT AFTER FABRICATION.



RUBRAIL CAP CONNECTION ELEVATION
 (RAIL POST NO. 28)(RAIL POST NO. 1 SIMILAR)



RUBRAIL CAP CONNECTION ELEVATION
 (RAIL POST NO. 33)(RAIL POST NO. 29 SIMILAR)

RUBRAIL CAP CONNECTION DETAILS AT REMOVABLE PANELS		
PROJECT NO. 472-2023-085864		
SCALE NTS		
DRAWN	DESIGNED	CHECKED
RAM	DMU	JRA
NO.	REVISION	DATE
0	ISSUED FOR CONSTRUCTION	8-1-2025
SHEET NO. 69 OF 114		

©2025 MKEC ENGINEERING, INC. ALL RIGHTS RESERVED WWW.MKEC.COM THESE DRAWINGS AND THEIR CONTENTS, INCLUDING, BUT NOT LIMITED TO, ALL CONCEPTS, DESIGNS, & DETAILS ARE THE EXCLUSIVE PROPERTY OF MKEC ENGINEERING, INC. (MKEC), AND MAY NOT BE USED OR REPRODUCED IN ANY WAY WITHOUT THE EXPRESS CONSENT OF MKEC.