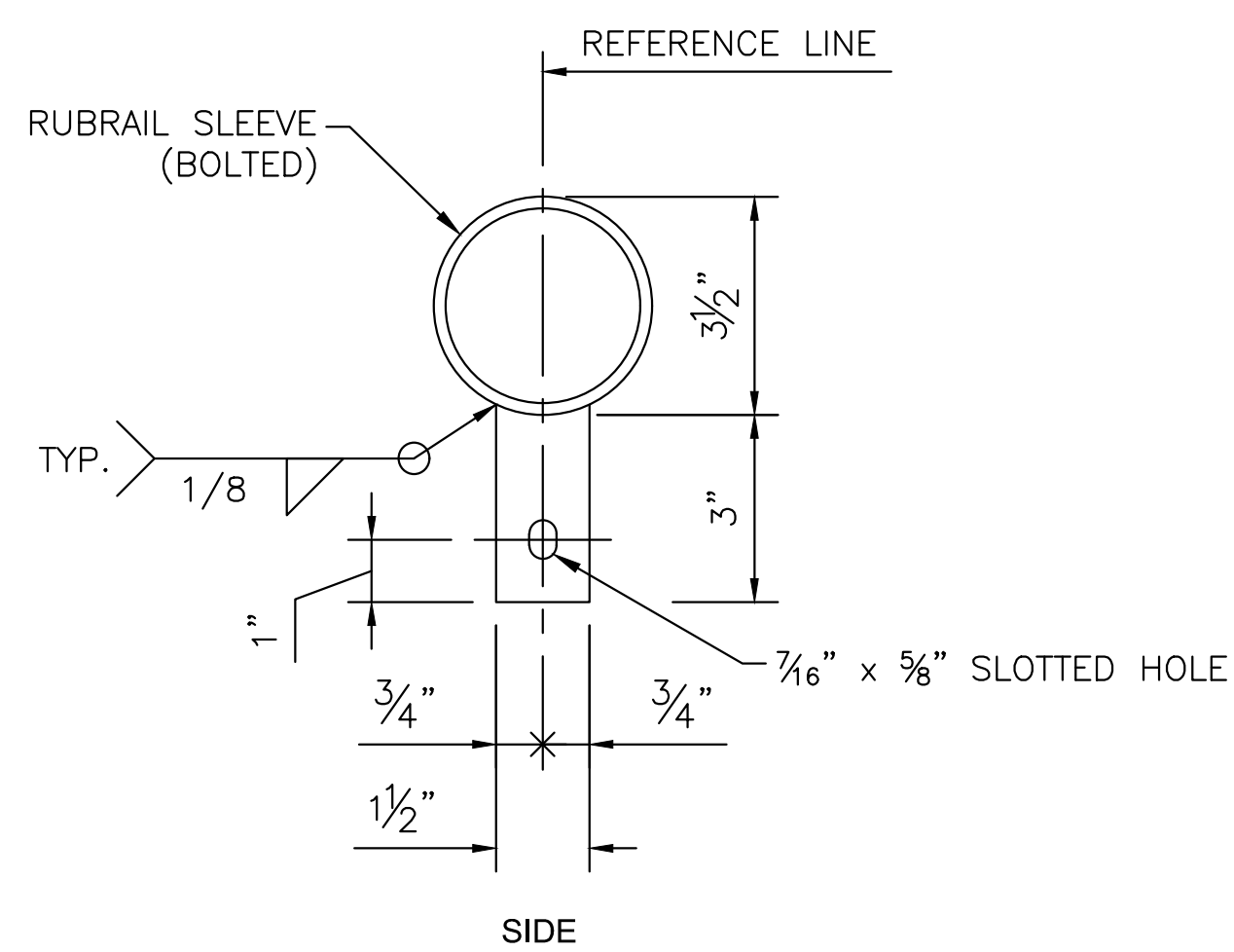
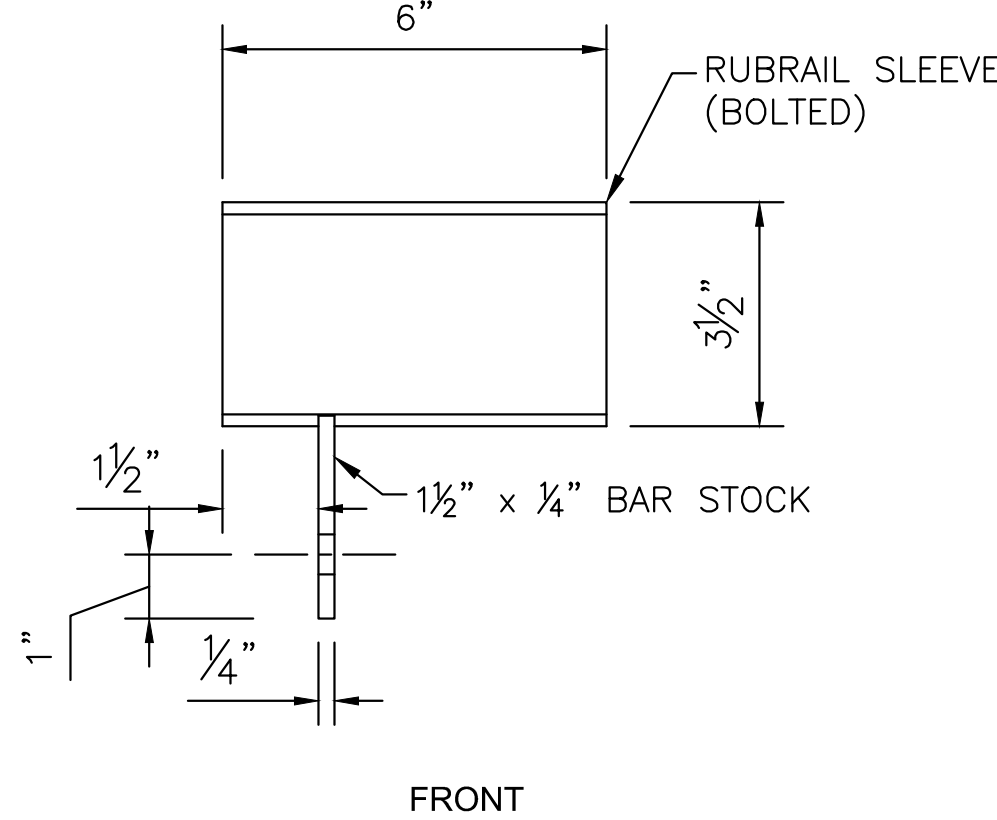
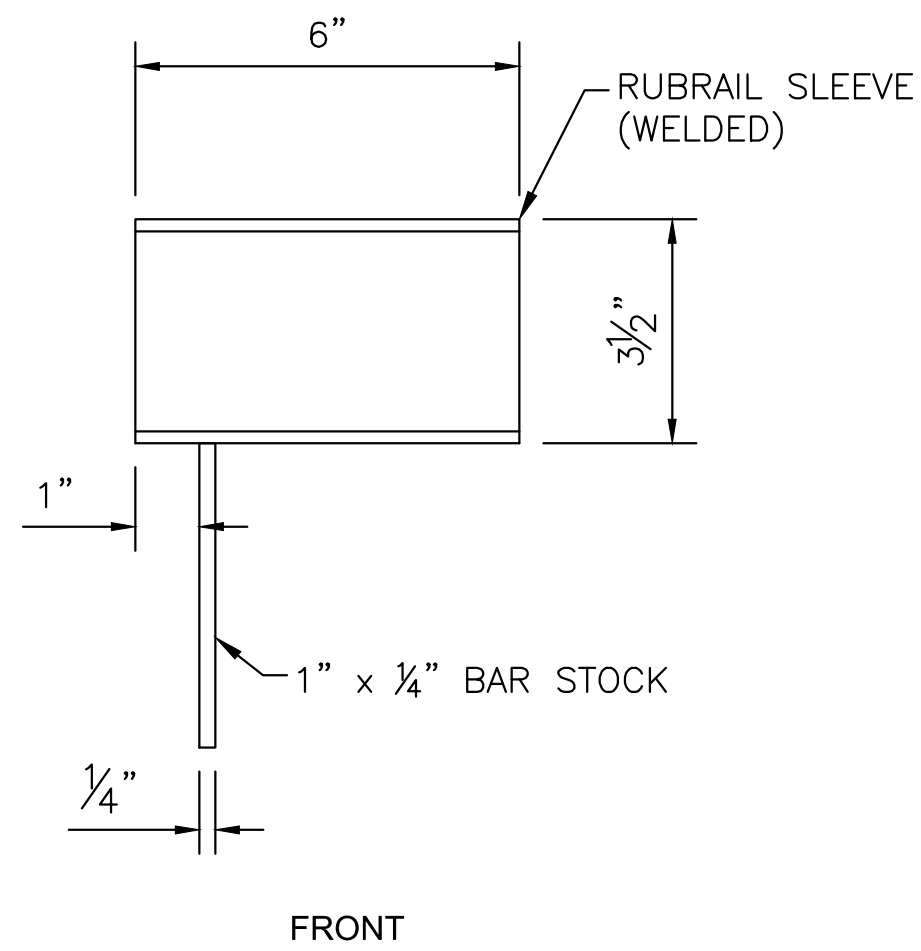
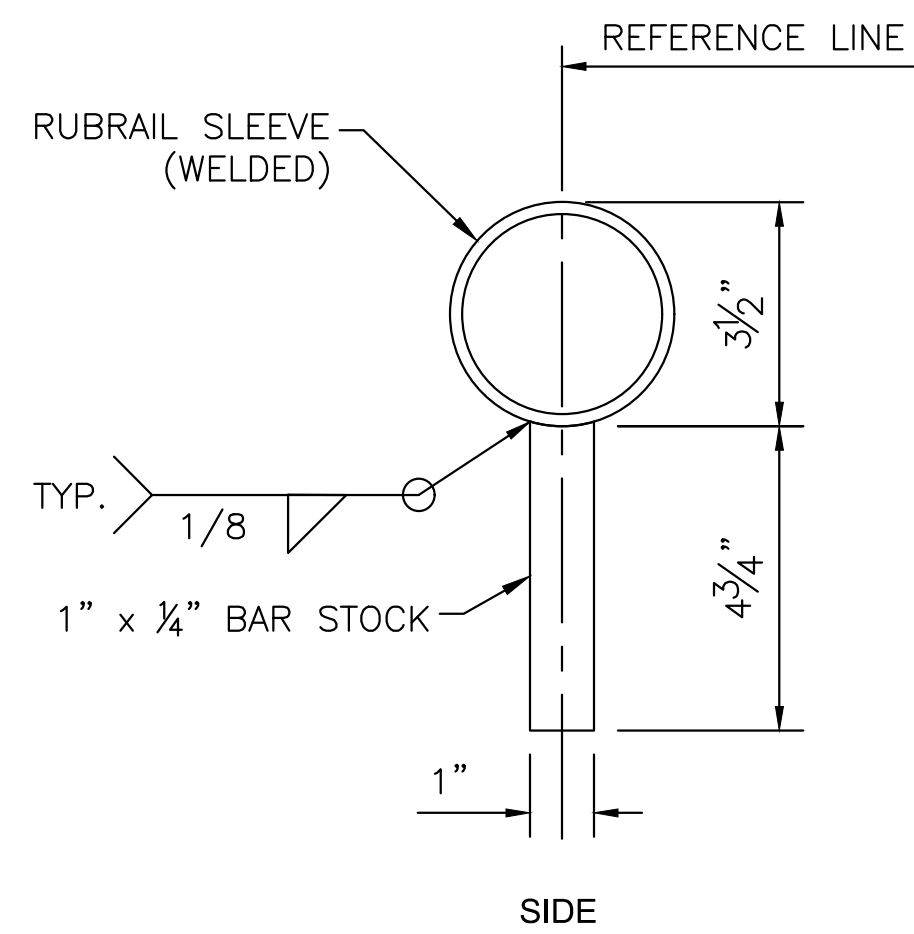
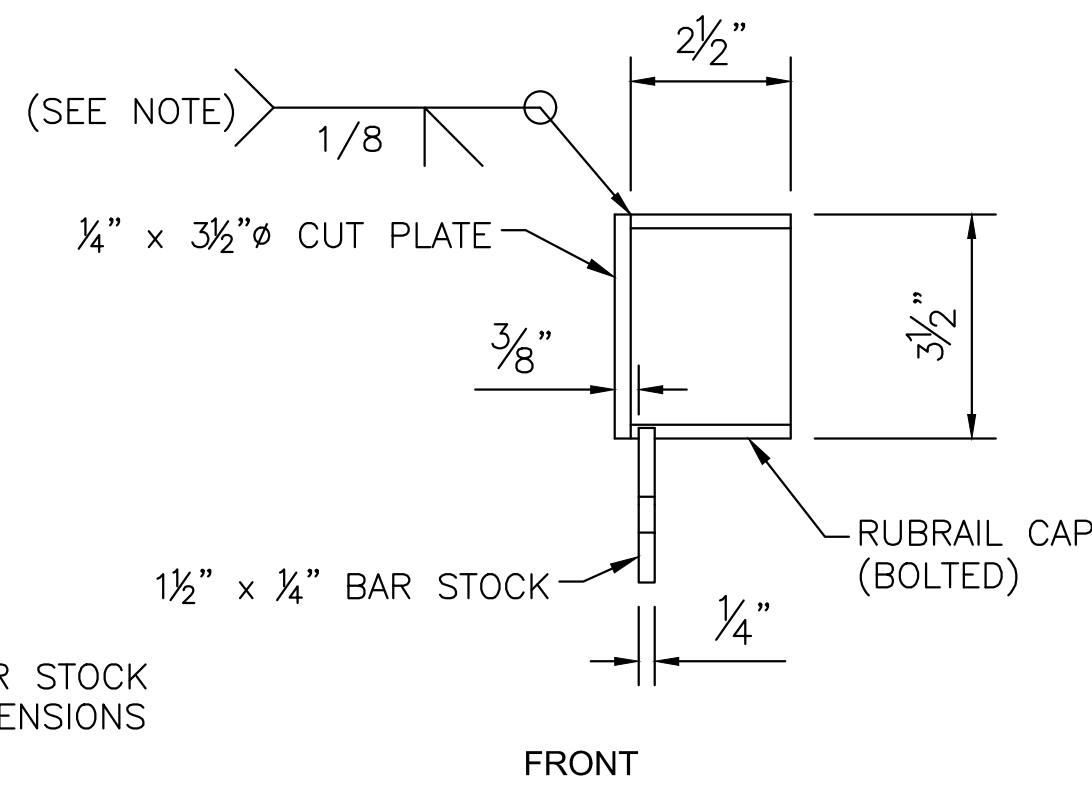
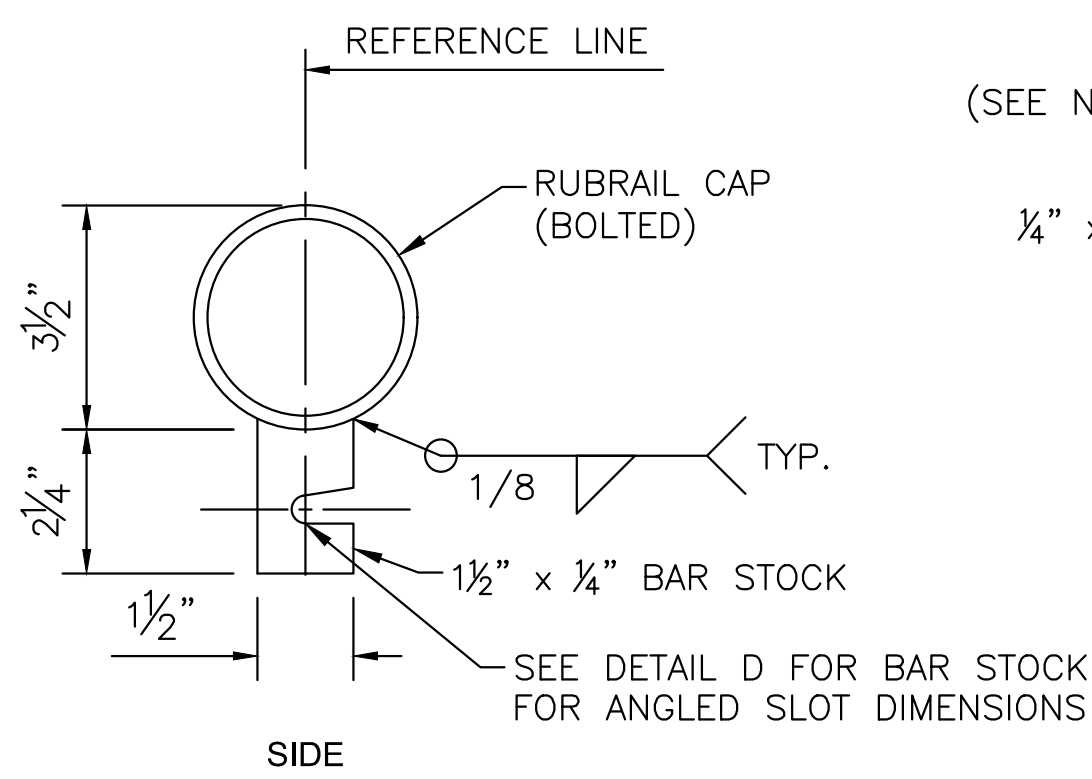
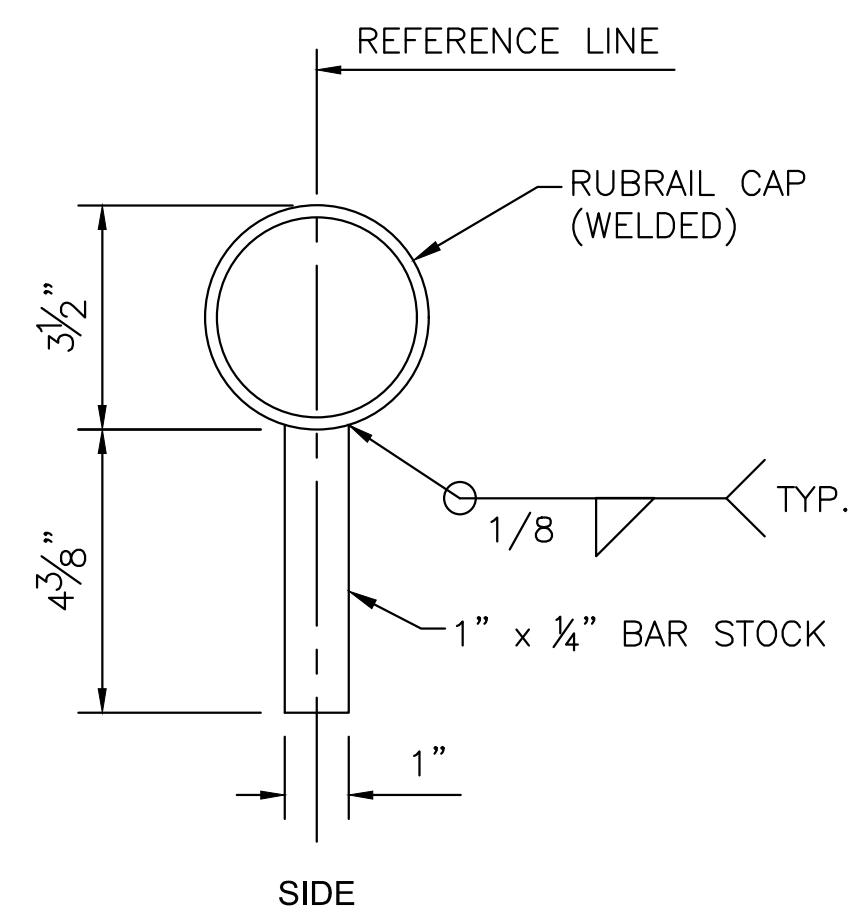
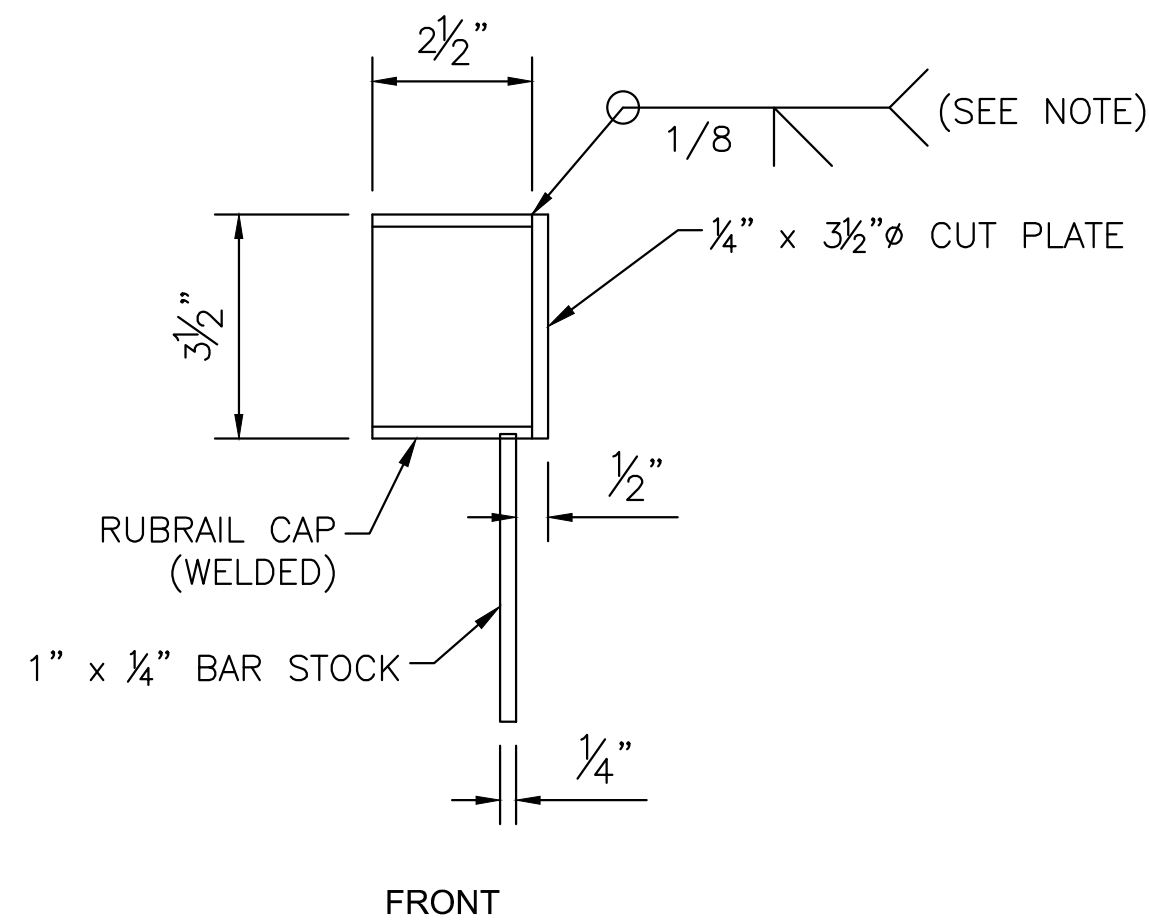


J:\PROJECTS\2023\202301010431_COW_WDG_BRIDGE REPLACEMENT AT 15TH STREET\00-230431-CAD\SHOTS\06-CIVIL\BRIDGE\BRIDGE RAIL\230431_RUBRAIL DETAILS.DWG
 PLOTTED: Friday, August 01, 2025 @ 02:15PM
 ©2025 MKEC ENGINEERING, INC. ALL RIGHTS RESERVED WWW.MKEC.COM THESE DRAWINGS AND THEIR CONTENTS, INCLUDING, BUT NOT LIMITED TO, ALL CONCEPTS, DESIGNS & DETAILS ARE THE EXCLUSIVE PROPERTY OF MKEC ENGINEERING, INC. (MKEC), AND MAY NOT BE USED OR REPRODUCED IN ANY WAY WITHOUT THE EXPRESS CONSENT OF MKEC.



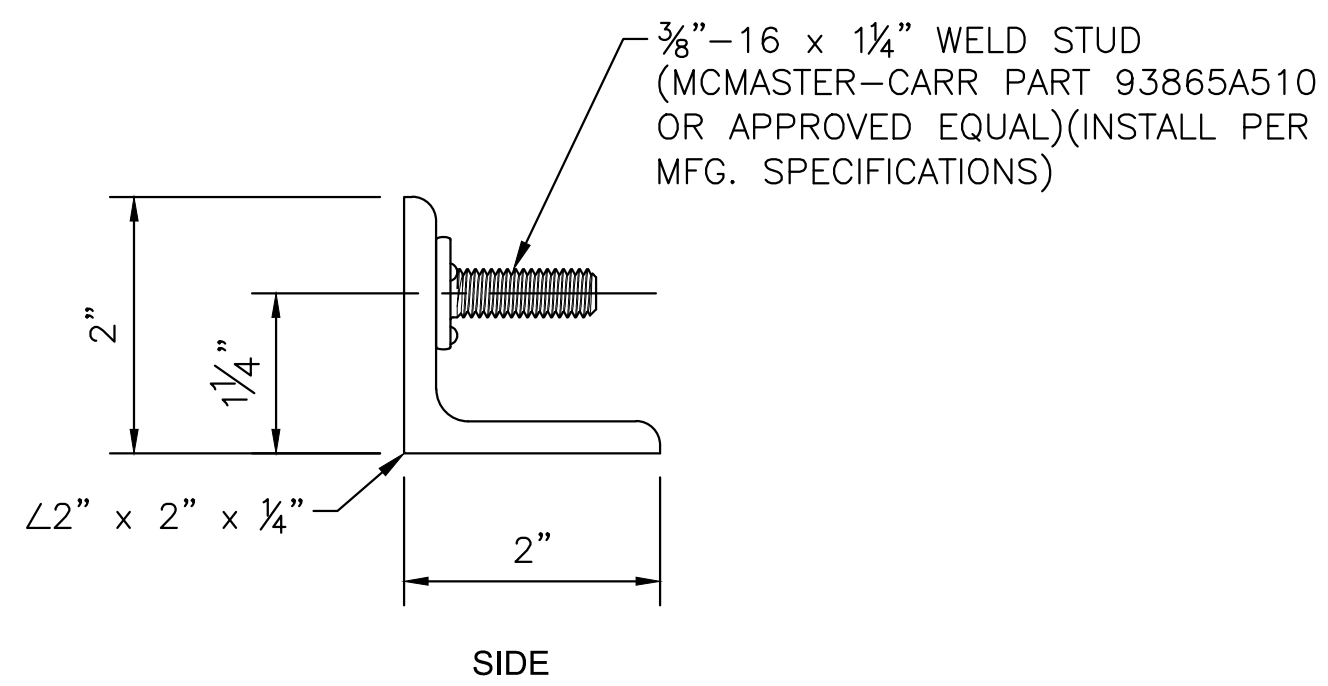
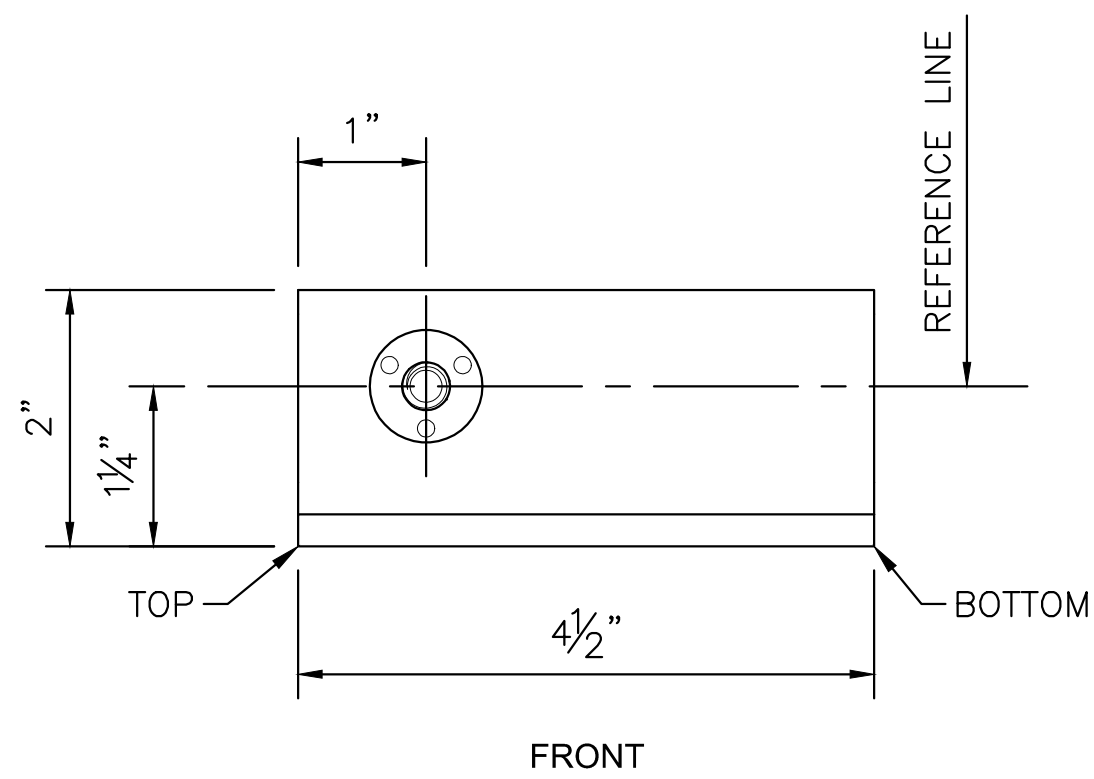
RUBRAIL SLEEVE DETAILS

NOTE:
 FABRICATOR TO SELECT ROUND HSS 3.50x0.203 OR HSS 3.50x0.188 FOR RUBRAIL SLEEVES & CAPS, DEPENDENT UPON OUTSIDE DIAMETER OF FINISH COATED RUBRAIL MATERIAL AND REQUIRED INSTALLATION CLEARANCES.

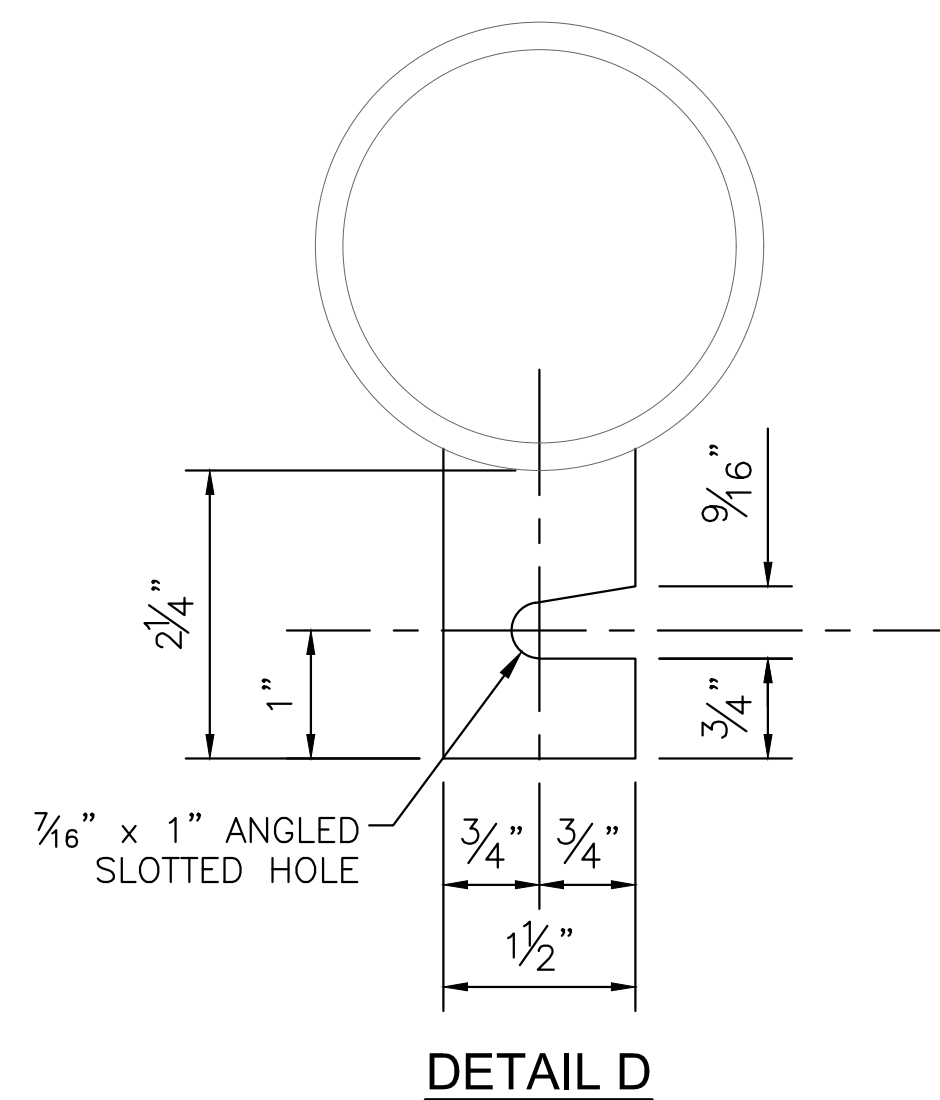


CUT PLATE WELD NOTE:
 CONTRACTOR TO GRIND EXTERIOR WELD SURFACES OF FABRICATED CAPS SMOOTH PRIOR TO PAINTING.

RUBRAIL CAP DETAILS



STEEL ANGLE



DETAIL D

CAPS AND SLEEVES			
PART NAME	UNIT WEIGHT (LBS)	QUANTITY	TOTAL WEIGHT (LBS)
CAP (WELDED)	1.8	16	28.9
CAP (BOLTED)	1.8	20	36.2
SLEEVE (WELDED)	3.9	32	124.6
SLEEVE (BOLTED)	3.9	4	15.6
STEEL ANGLE	1.2	24	28.7
TOTAL			234

NOTE: ALL QUANTITIES SHOWN ARE SUBSIDIARY TO "COMBINATION RAIL". SEE SHEET 59 FOR SUMMARY.

RUBRAIL SLEEVE AND CAP DETAILS

PROJECT NO. 472-2023-085864

SCALE NTS

DRAWN DESIGNED CHECKED
 RAM DMU JRA

ISSUED FOR CONSTRUCTION 8-1-2025

NO. REVISION DATE