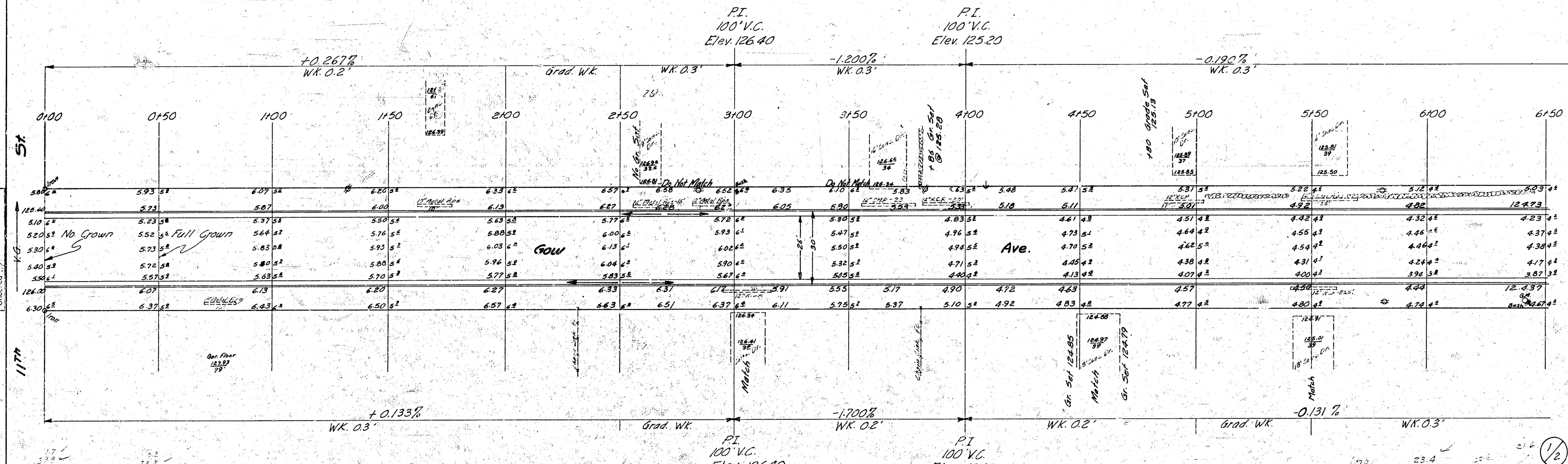

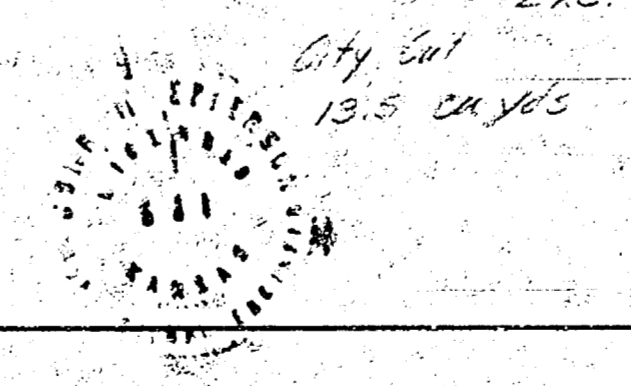


NOTE - Use B.M. On This Plan
 B.M. 125.45 - 5th NW Cor 13th & Sheridan
 124.60 - Step Bench in E.S. H.L.P. SW Cor. 13th & Gow
 126.48 - Step Bench in S. H.L.P. SW Cor. 11th & Gow
 124.68 - NW Cor. 1st Cont. Shop, NW Cor. School Ho.
 At Del Sienna & High
 Sta. On &

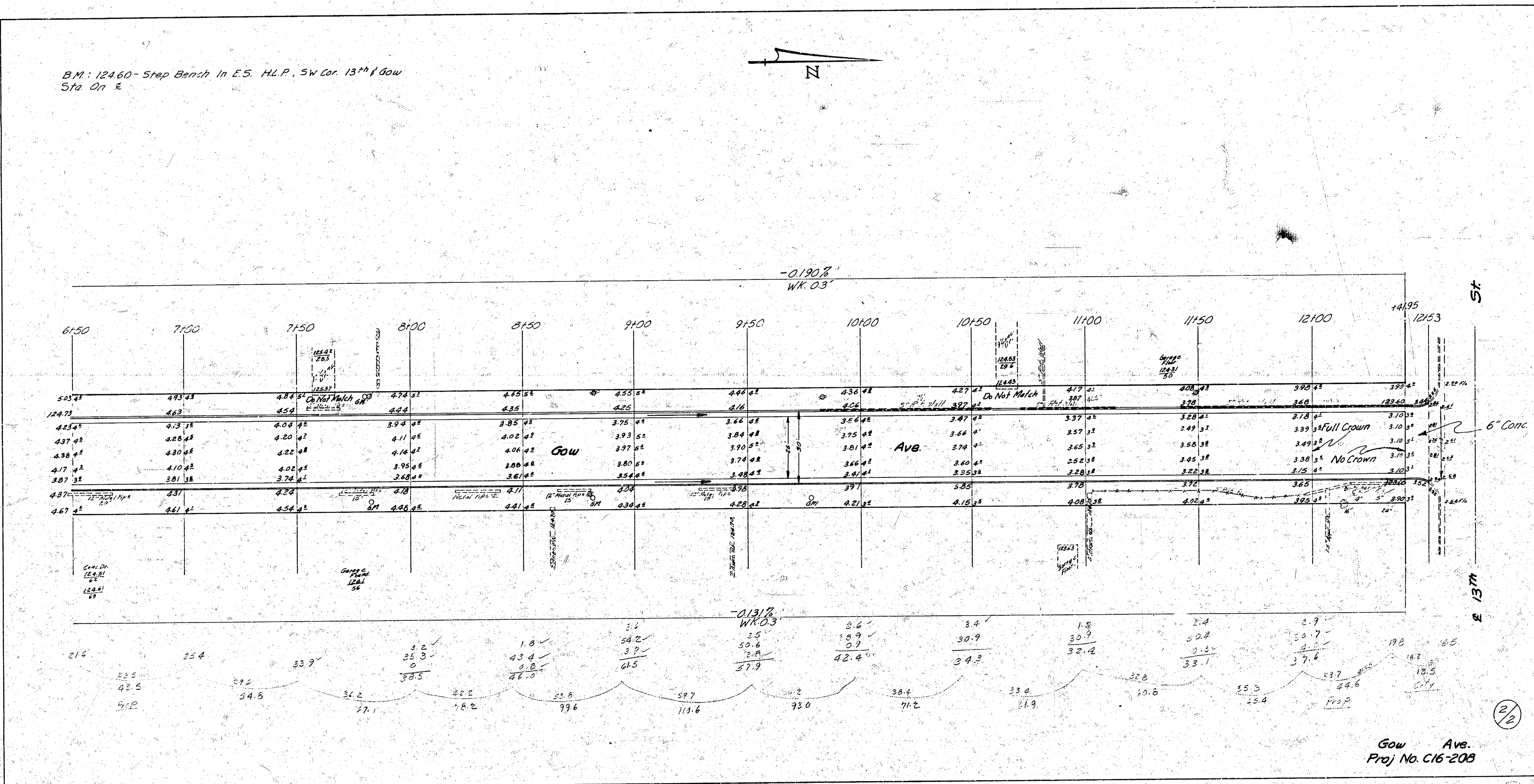


Surveyed by H.F.S.
 Plot by G.C. Smith
 Exc. by G.C. Smith
 Checked by G.C. Smith


GOW AVE.
 NL 11th to SL 13th
 26-2-30 A.C.
 CITY OF WICHITA, KANSAS
 B.E. SMITH - CITY ENGINEER
 JUNE 1957 PROJ. NO. C16-208



B.M. 12460 - Step Bench In E.S. H.L.P. SW Cor. 13th & Gow
Sta. On E



Gow Ave.
Proj No. C16-208

2/6

13 5 53