

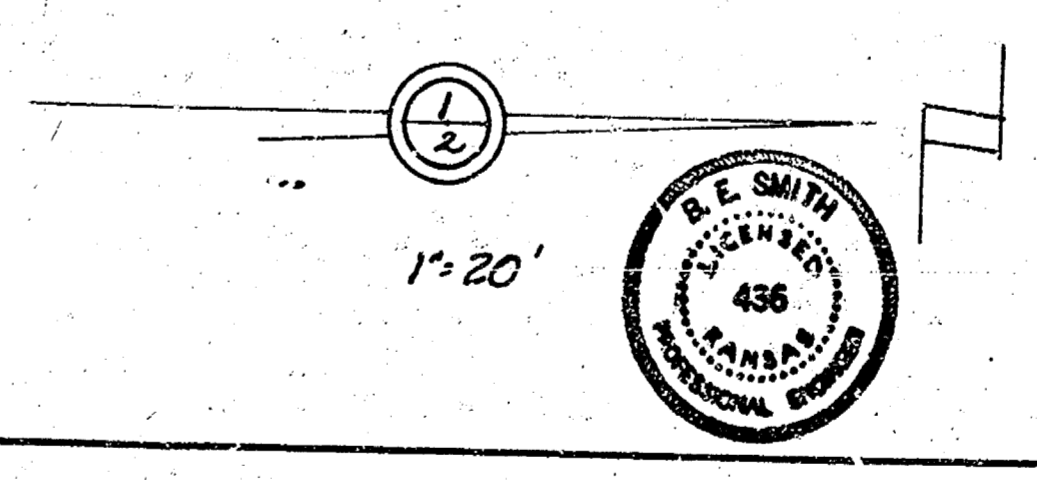
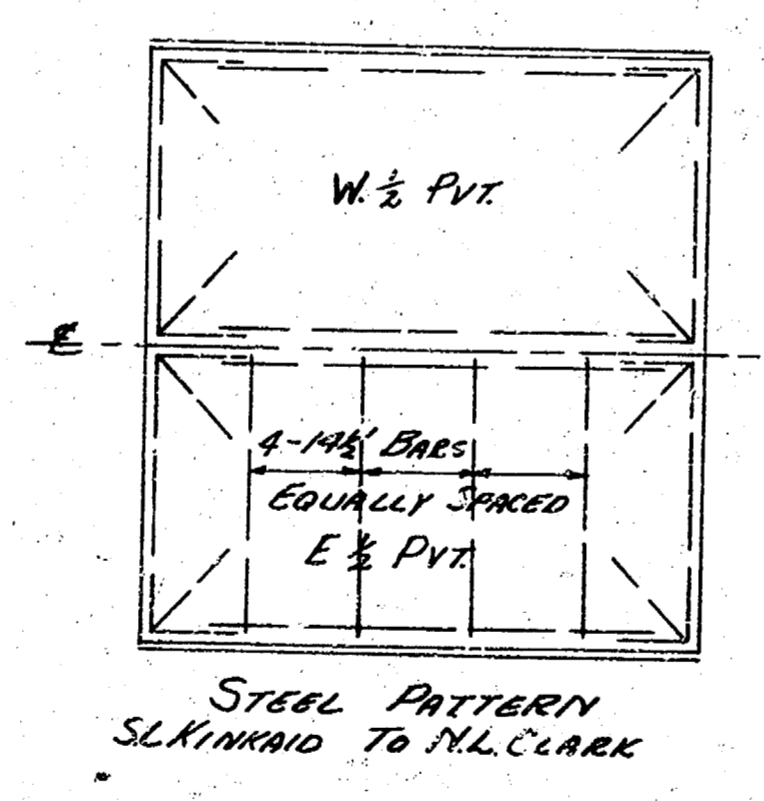
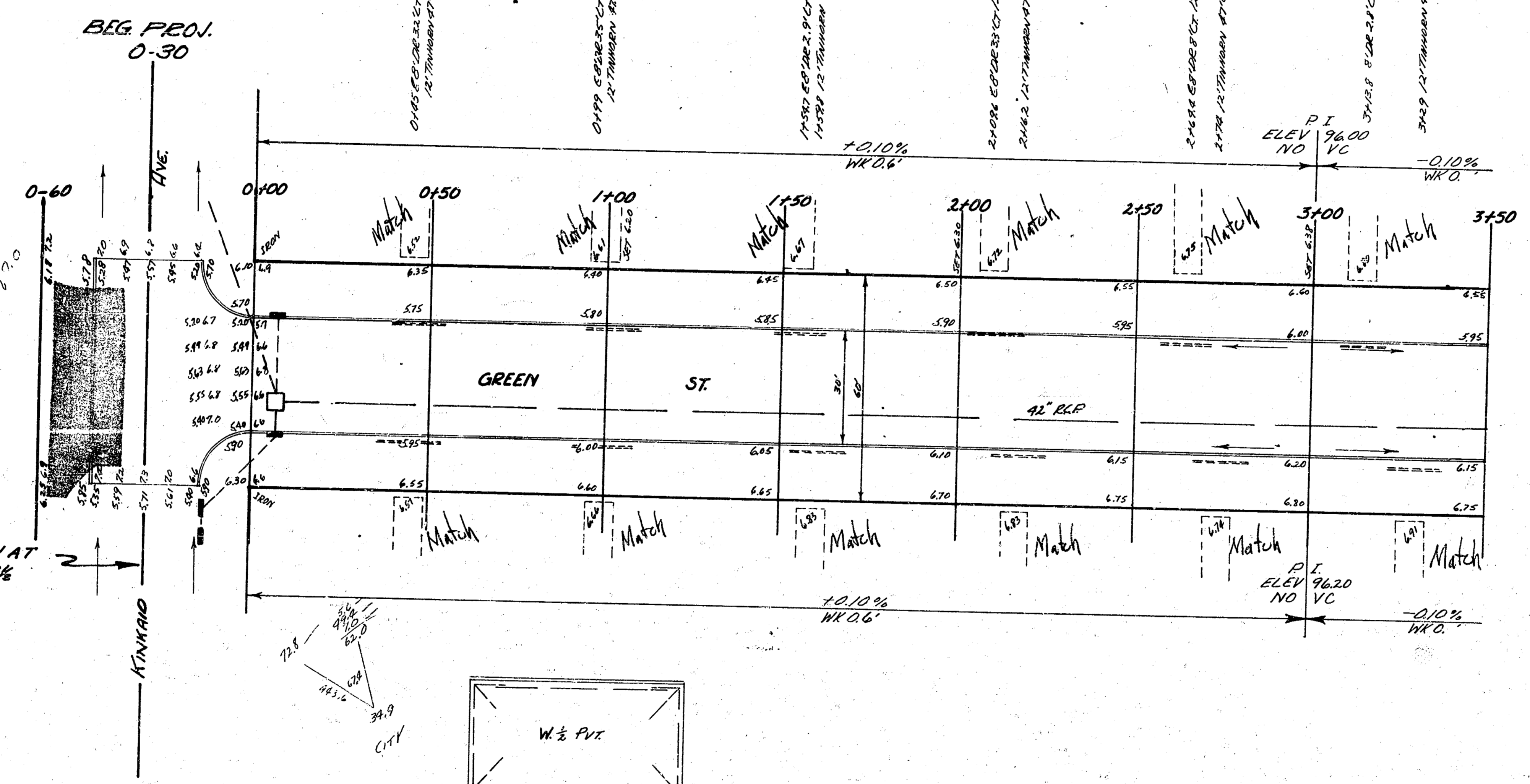
B.M. 9882 SECOR CONC PARCH NO. 2101 S GREEN  
 B.M. 10269 SH CONC CONC PARCH NO. 2804 E LAY

STA ON W.R.

PROP  
 12.10.6  
 +10269.21  
 72.7.7  
 CITY  
 4522

STATION  
 PLAN  
 CHECKED

NOTE. CONSTRUCTION TO BEGIN AT  
 E KINKAID. DO NOT PAVE 5%  
 OF INTERSECTION.



GREEN ST.  
 SL. KINKAID TO N.L. CLARK  
 30' CONC # CB  
 CITY OF WICHITA, KANSAS  
 B.E. SMITH CITY ENGINEER  
 FEB. 3, 1953 PROJ. NO. C/E-262

