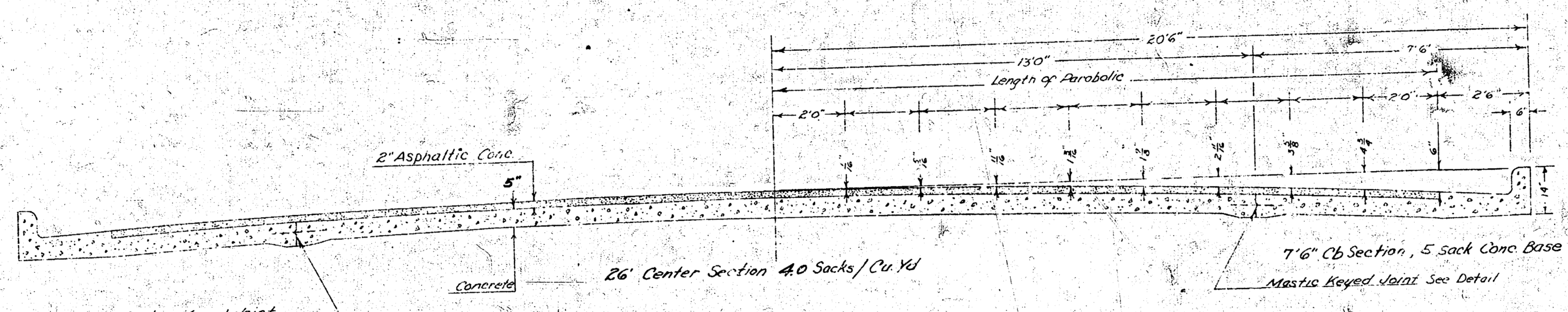
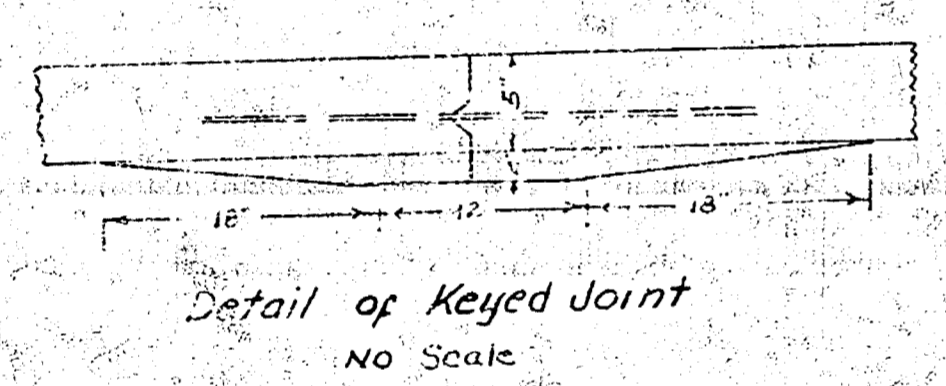


GROVE ST.
N.L. 25TH TO E 26TH

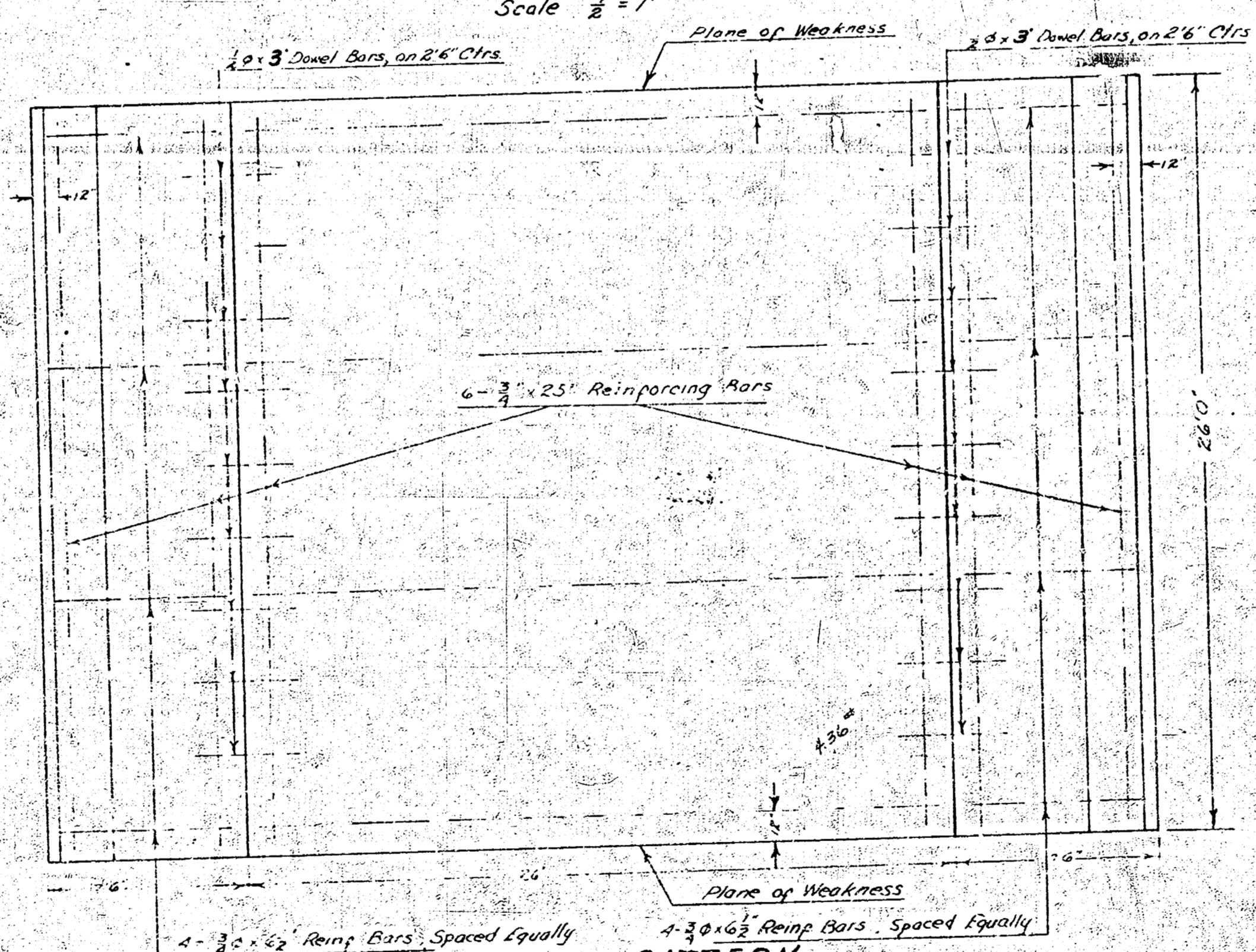


TYPICAL SECTION

Scale $\frac{1}{2}'' = 1'$

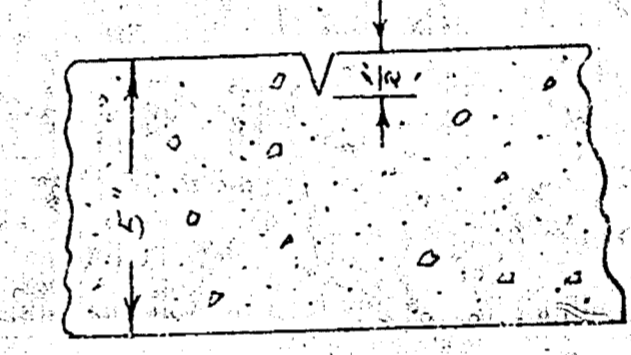


Detail of Keyed Joint
NO Scale



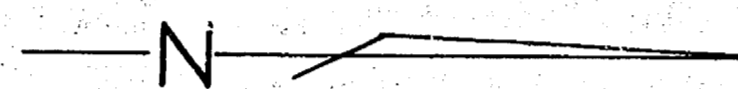
STEEL PATTERN

Scale $\frac{1}{4}'' = 1'$

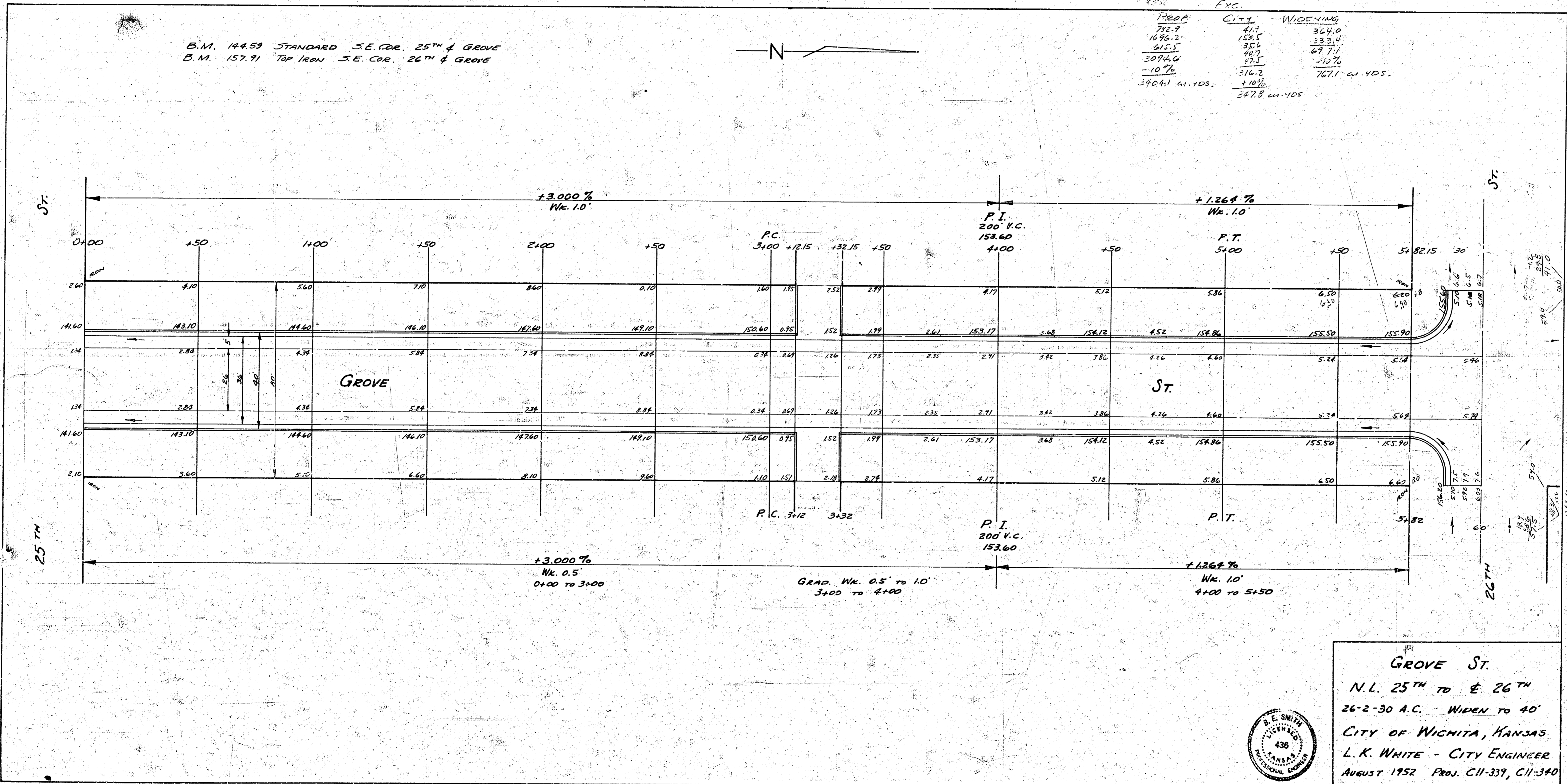


Detail Plane of Weakness
Plane of Weakness to be cut with
Double-Edge Groover to depth as
shown in a straight line from
curb to curb 24\"/>

B.M. 144.59 STANDARD S.E. COR. 25TH & GROVE
 B.M. 157.71 TOP IRON S.E. COR. 26TH & GROVE



PROP.	CITY	WIDENING
282.2	41.7	240.0
1696.2	152.5	333.0
615.5	35.5	67.7
3074.6	207	210.7
-10%	216.2	767.1
3404.1	411.105	1127.8
		411.105



GROVE ST.
 N.L. 25TH TO E 26TH
 26'-2'-30" A.C. - WIDEN TO 40'
 CITY OF WICHITA, KANSAS
 L.K. WHITE - CITY ENGINEER
 AUGUST 1952 PROJ. C11-339, C11-340

