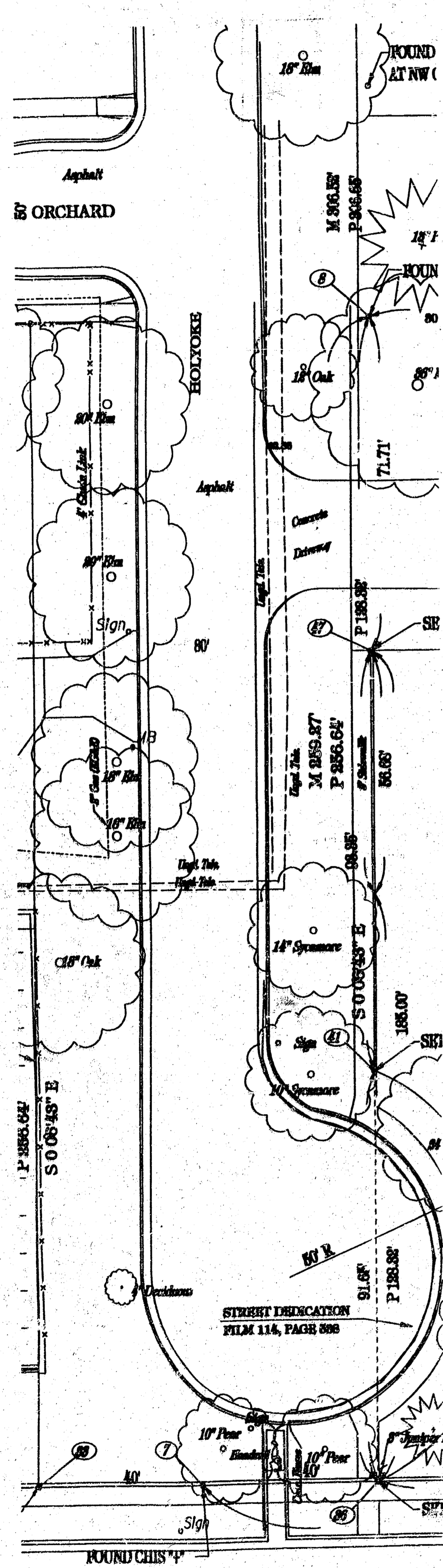
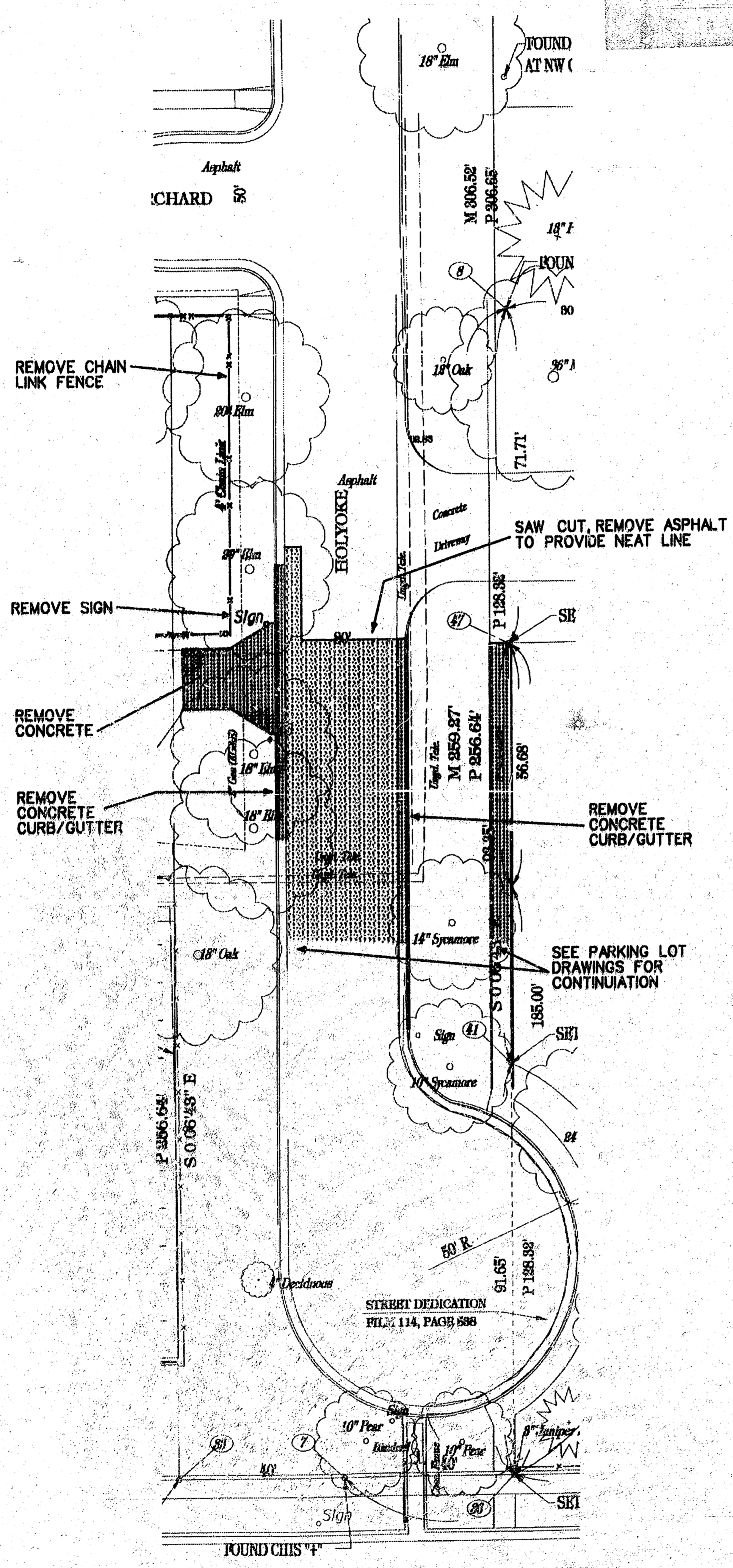


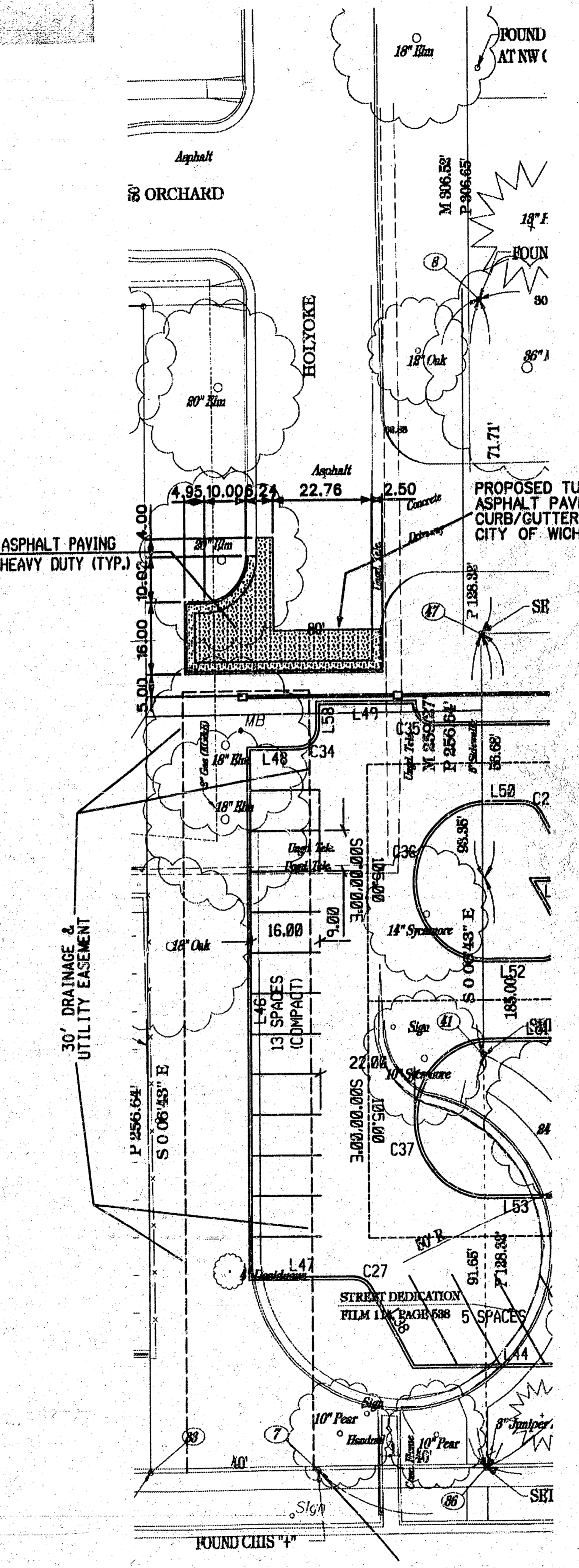
099 PPP  
MICRO FILM



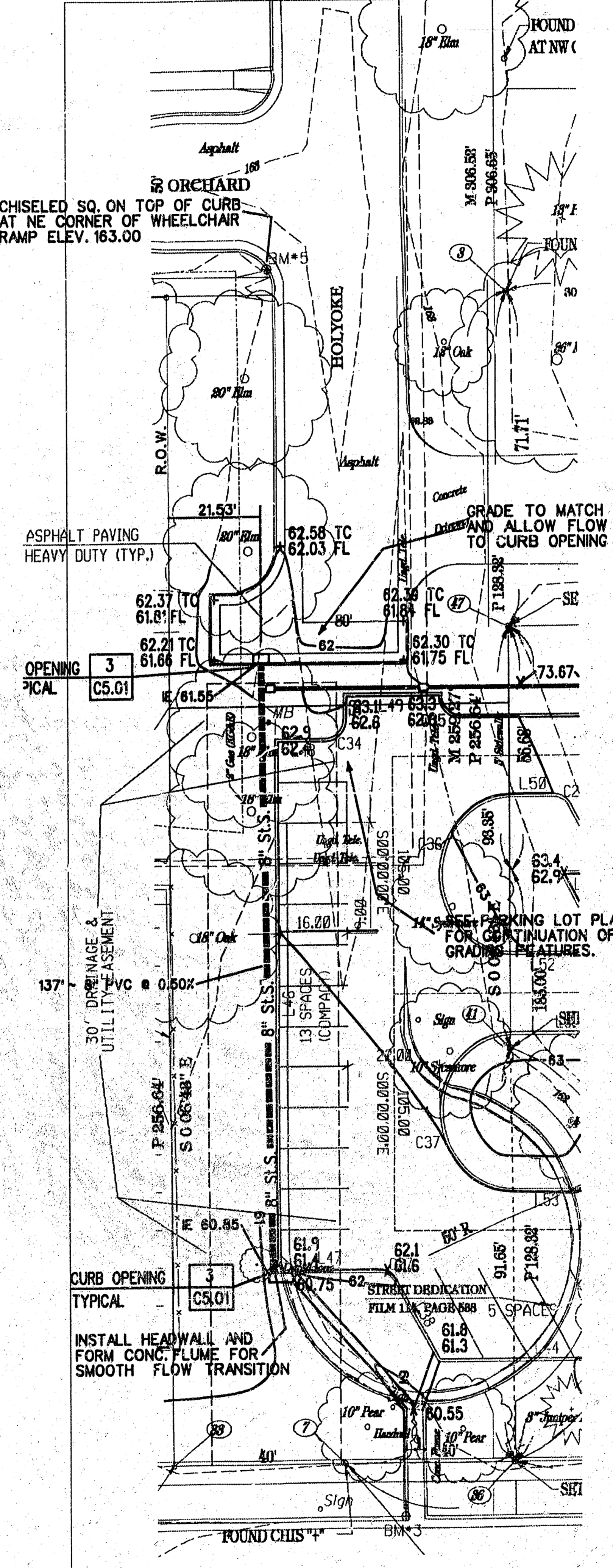
EXISTING CONDITIONS



DEMOLITION PLAN



SITE LAYOUT PLAN

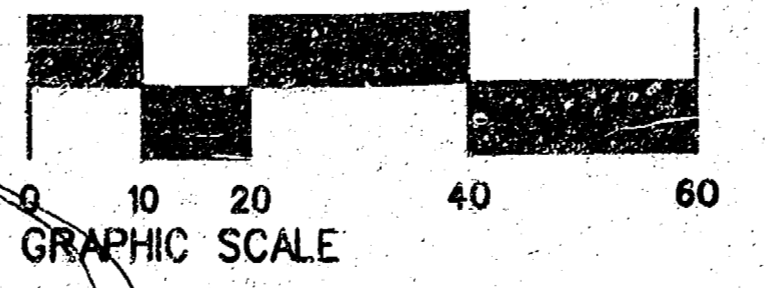


GRADING & DRAINAGE PLAN

**NOTE TO CONTRACTOR**  
 INSPECTION AND TESTING FOR THIS PROJECT IS TO BE PERFORMED BY A LICENSED CONSULTING ENGINEERING FIRM IN ACCORDANCE WITH THE CITY OF WICHITA CONSTRUCTION ENGINEERING PRACTICES AND CODES. ALL PROFESSIONAL ENGINEERS WHO WORK UNDER THE DEDICATED EASEMENTS OR THE PUBLIC RIGHT-OF-WAY WITHOUT WRITTEN AUTHORIZATION BY THE CITY ENGINEER.

APPROVED AS NOTED  
 By CITY ENGINEER OF WICHITA  
 Sanitary Sewers \_\_\_\_\_  
 Storm Sewers VRH 9/27/95  
 Driveway Approaches \_\_\_\_\_  
 Water Mains \_\_\_\_\_  
 Paving VRH 9/27/95

CITY OF WICHITA PRIVATE PROJECT NO. 098PPP  
 INDEX CODE 607879  
 CITY ENGINEER: MICHAEL E. LINDEBAK, PE  
*Hammerhead on Holyoke*



# PROPOSED TURNAROUND

Date 9/25/95  
 Checked by \_\_\_\_\_  
 Job Number 94071  
 Drawn By \_\_\_\_\_  
 Revisions \_\_\_\_\_

PROPOSED BIRTHING CENTER  
 WESLEY MEDICAL CENTER  
 WHICHITA KANSAS  
 COLUMBIA /HCA

