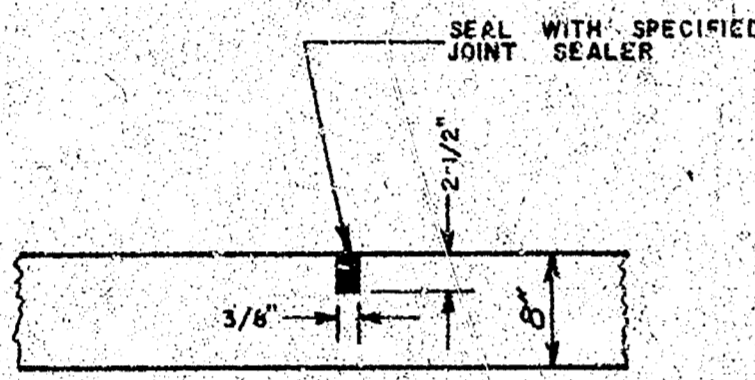


**HARRY STREET**  
W.L. BAEHR TO W.L. WICHITA BUILDERS ADDN.  
PROJ. NO. DAKS 572024  
CITY OF WICHITA, KANSAS  
R. W. LINN, CITY ENGINEER

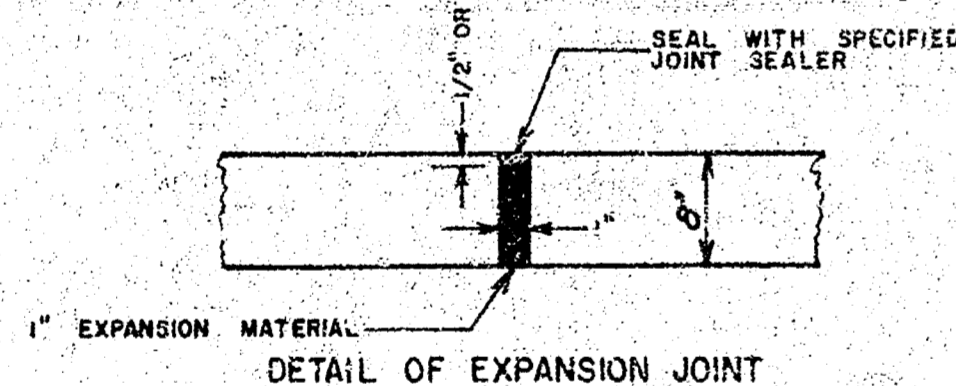
SYMMETRICAL ABOUT CENTERLINE

SAWED CONTRACTION JOINTS ARE TO BE CONSTRUCTED AT 30' 0" INTERVALS EXCEPT WHERE AN EXPANSION JOINT IS USED.

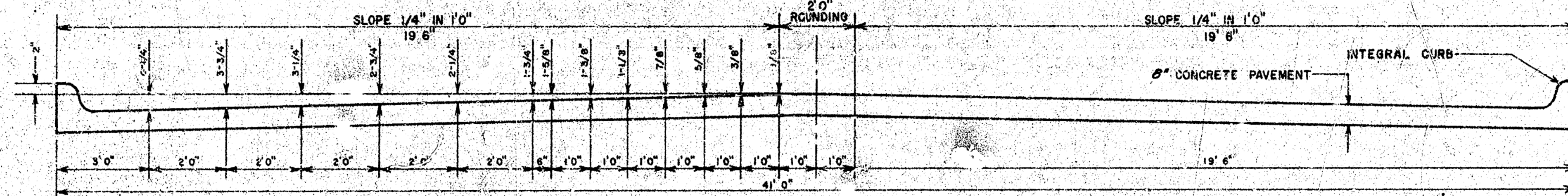


DETAIL OF SAWED CONTRACTION AND LONGITUDINAL JOINTS

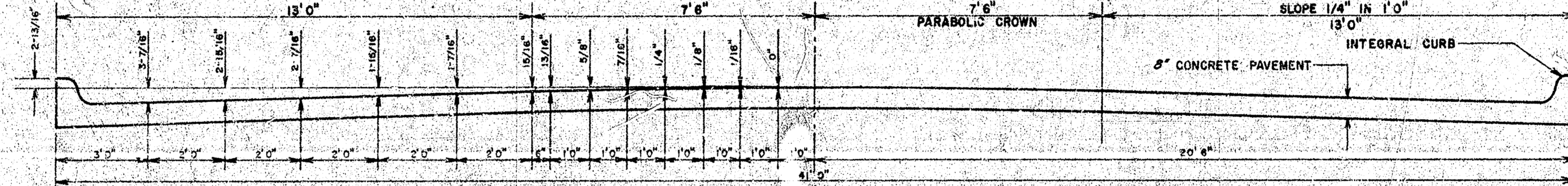
EXPANSION JOINTS ARE TO BE CONSTRUCTED AT MAXIMUM INTERVALS OF 120' 0".



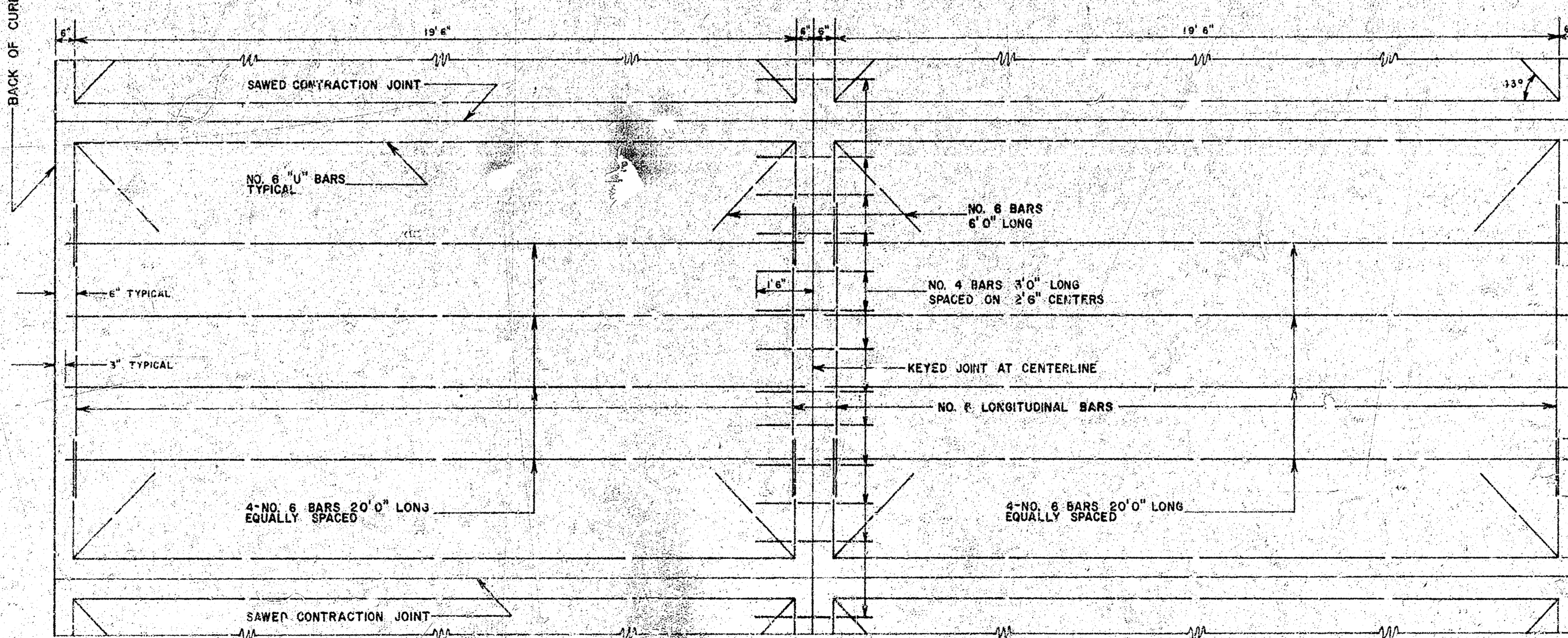
DETAIL OF EXPANSION JOINT



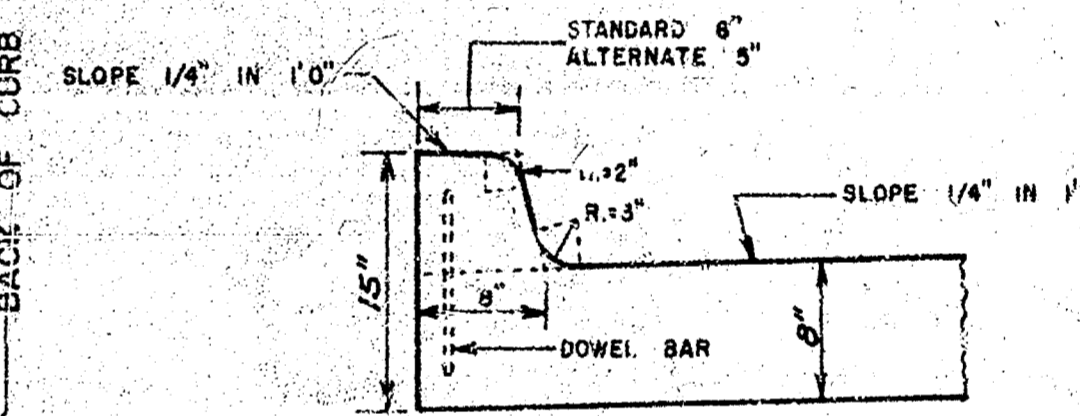
TYPICAL SECTION WITH ALTERNATE CROWN  
40' 0" CONCRETE PAVEMENT



TYPICAL SECTION WITH STANDARD CROWN  
40' 0" CONCRETE PAVEMENT

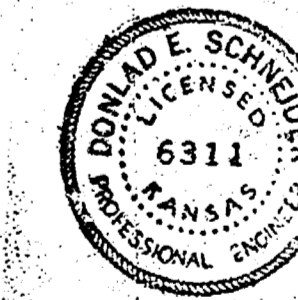


TYPICAL STEEL PATTERN

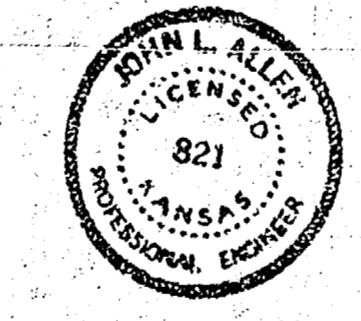
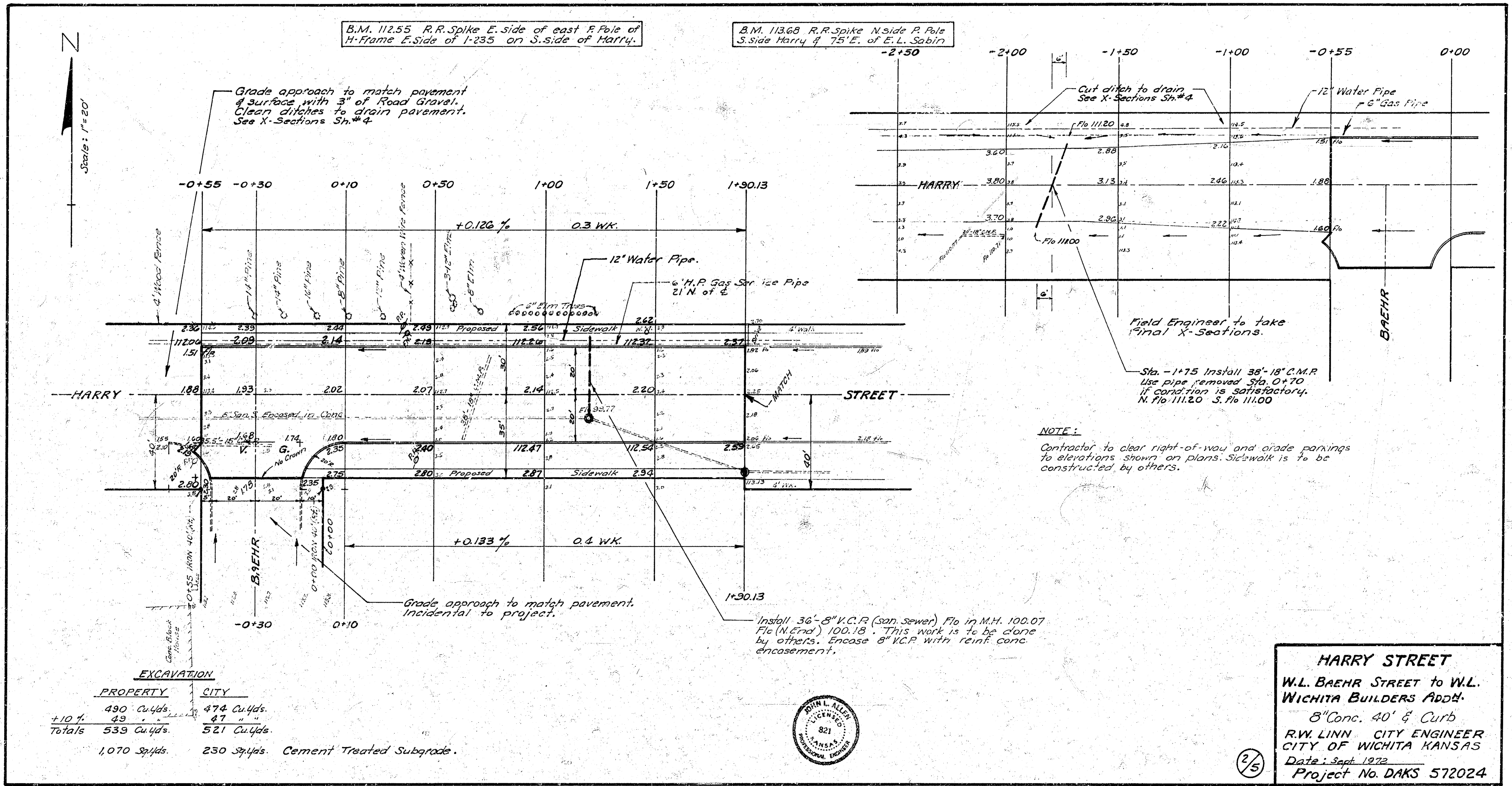


DETAIL OF INTEGRAL CURB

INTEGRAL CURB SHALL BE CUT THROUGH TO THE PAVEMENT IN UNIFORM LENGTHS OF NOT MORE THAN TEN FOOT INTERVALS BETWEEN EXPANSION JOINTS. EXPANSION JOINTS HAVING THE SAME THICKNESS AS THE EXPANSION JOINTS IN THE PAVEMENT SHALL BE CONSTRUCTED IN THE INTEGRAL CURB AT THE SPECIFIED LOCATIONS. NUMBER 4 OR NUMBER 6 DOWELS SHALL BE INSTALLED IN THE INTEGRAL CURB AS SHOWN ON APPROXIMATELY 2' 6" CENTERS. PAVEMENT GRADES SHOWN ON PLANS ARE FOR STANDARD CROWN.



Survey Young & 247-Y  
 11/11/72  
 E.L.S.  
 C.H.H.



2/5