

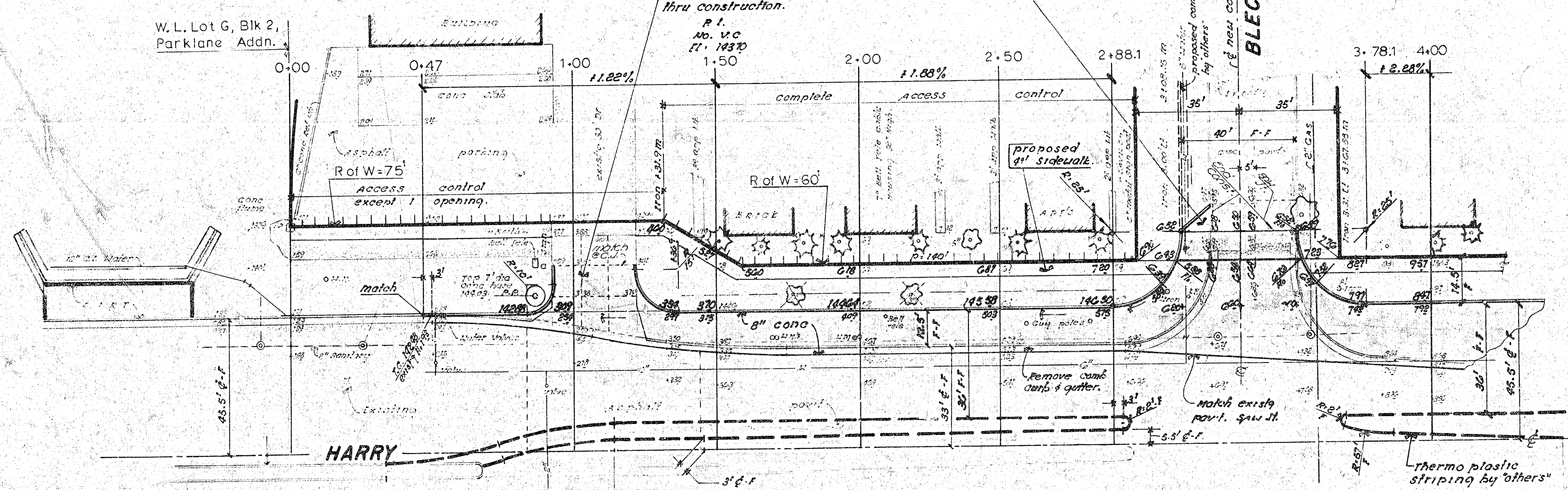
Base Line = 47' N. of HARRY

B.M. 14243 CITY STANDARD DISC on west end of N. Hubquard
to new R.C.B. approx. 150' E. of OLIVER on HARRY.
B.M. 14830 R.R. Spike N. Side p. pole, 3/4 Side HARRY @ W. 1/4
of BLECKLEY.



SAW EXISTING PAVEMENT AND REMOVE CURB. CONSTRUCT 8" CONC PAVT 1" INTEGRAL CURB. MATCH FLOWS.

NOTE: Driveway traffic to be carried thru construction.
R.I. NO. V.C. FT. 14370



GLANTZ BR 100 230
Civil
Director

NOTE TO CONTRACTOR - ALL USEABLE EXCAVATED MATERIAL TO BE USED ON DRAINAGE PROJECT IN CONNECTION WITH BLECKLEY DRIVE PROJECT - HARRY STREET-NORTH. CONTACT DRAINAGE CONTRACTOR FOR STOCK PILE LOCATION.

NOTE - TREES TO BE REMOVED ARE MARKED WITH X EXCEPT THAT ANY TREE MARKED FOR REMOVAL WHICH IN THE OPINION OF THE ENGINEER CAN BE SAVED, SHALL BE SPARED.

SUB-GRADE
TYPE OF SUB-GRADE TREATMENT SHALL BE DETERMINED BY THE FIELD ENGINEER. SUB-GRADE TREATMENT MAY CONSIST OF LIME TREATMENT, CEMENT TREATMENT, SUB-GRADE MODIFICATION, OR ANY COMBINATION OF THESE.

Excavation -
796.2 Cu yds
10% 79.6 Cu yds
875.8 Cu yds

NOTE TO FIELD ENGINEER & CONTRACTOR
Grade parking and curb, right-way for proposed sidewalk. Contact filling subwork order to be constructed by "OTHERS".

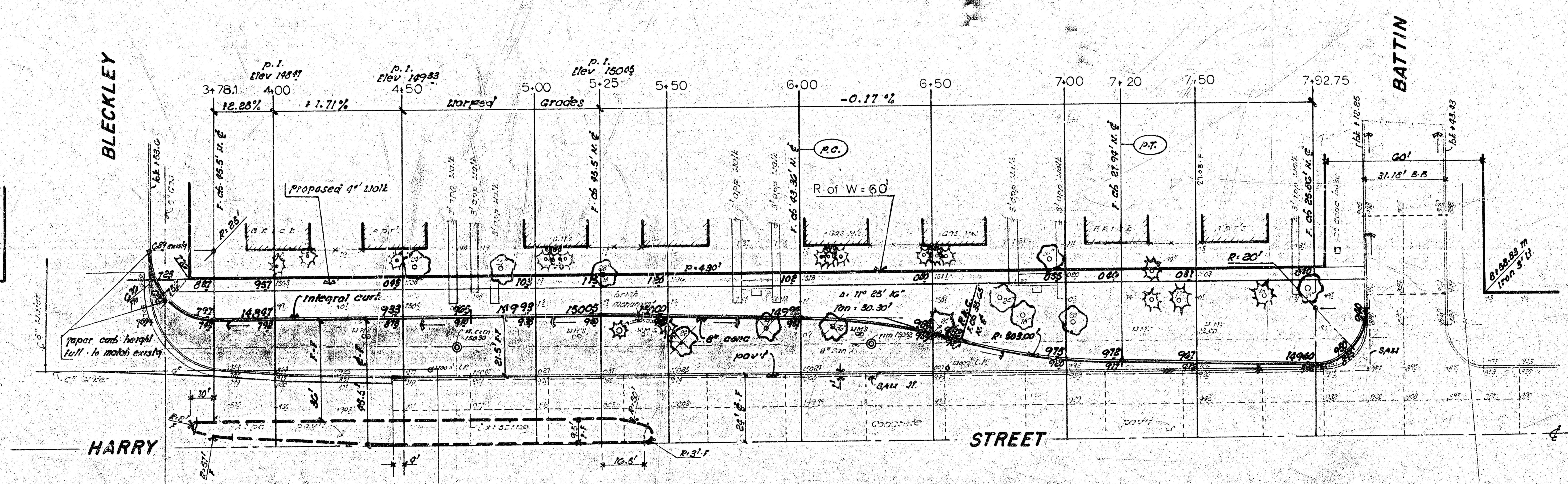
ELPYCO

No. Side HARRY STREET.
W.L. LOT 6, BLK 2, PARKLANE
ADDN. TO 430' E. E.L. BLECKLEY.
CITY of WICHITA, KANSAS
ACCEL-DECEL LANE 8" Conc Pavt

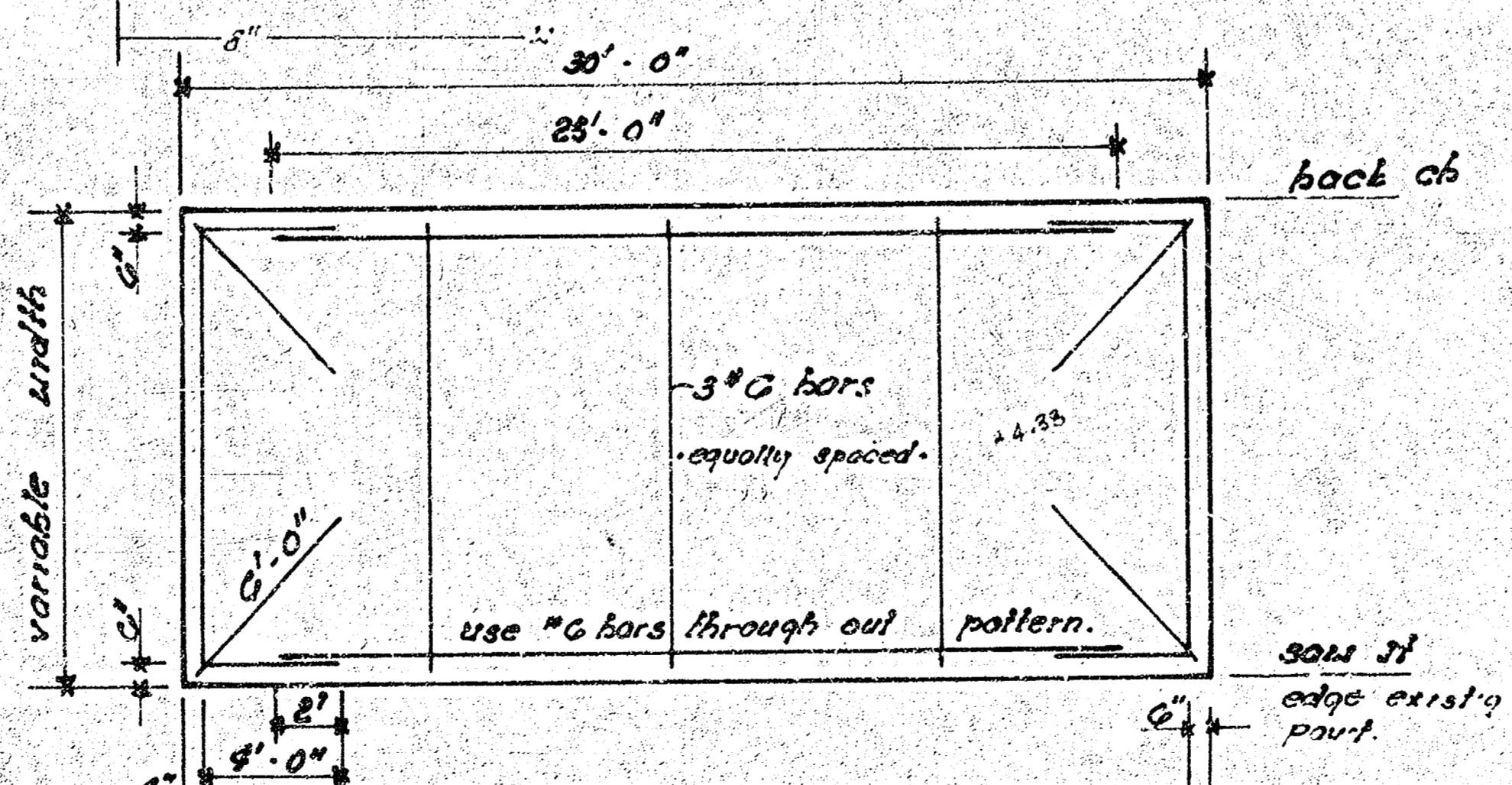
1/4

R.W. LINN CITY ENGINEER
Date: _____ Proj No. DAKS575047

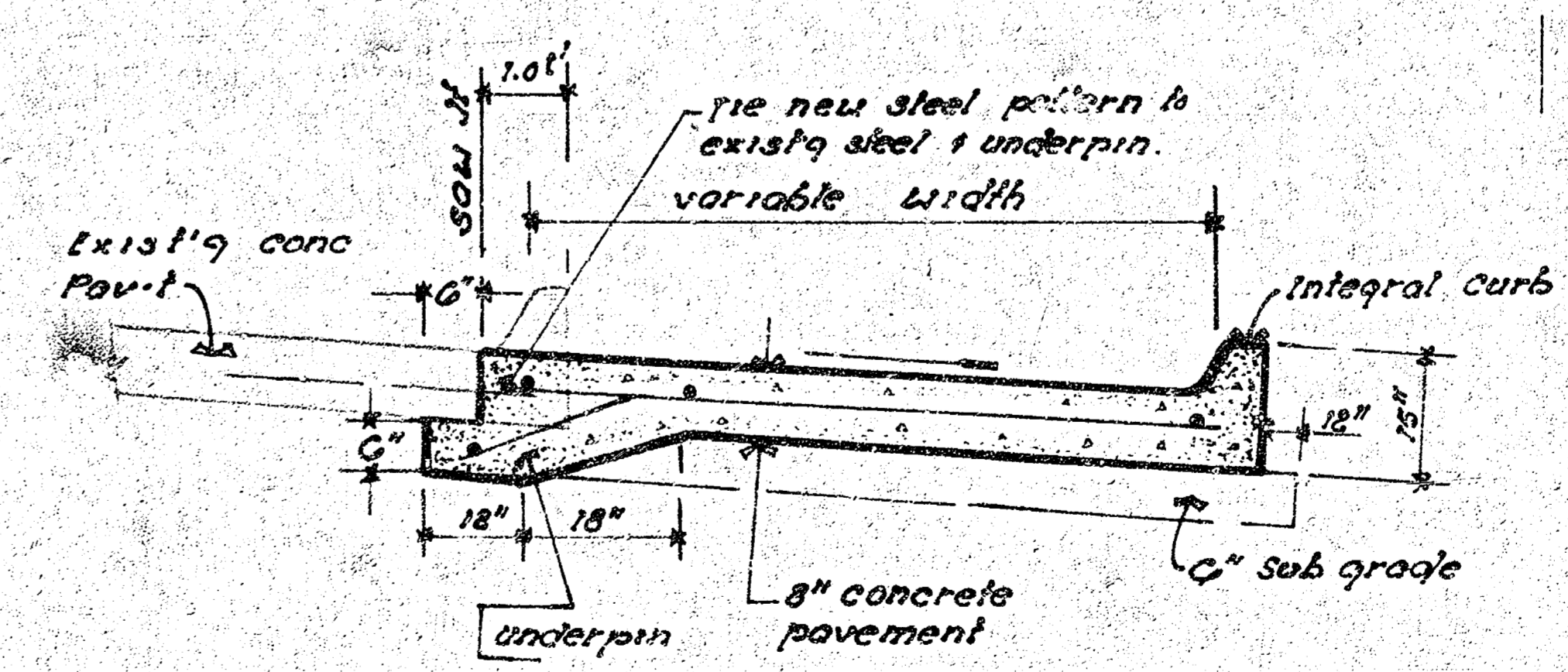
B.M. 15030 R.R. Spike 50. Side large cottonwood tree on N.W. Cor HARRY & BATTAN.



Note: Do not replace open w/its.



TYPICAL STEEL PATTERN



TYPICAL SECTION