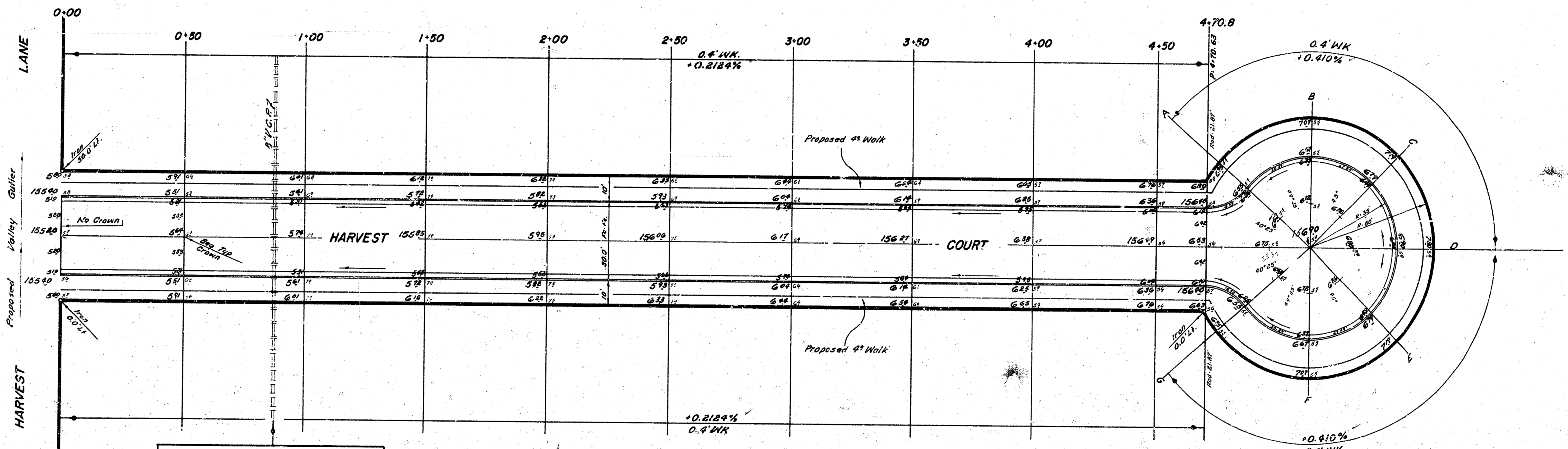
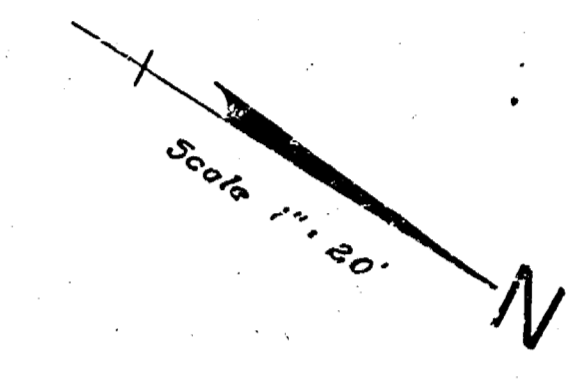


B.M. 154.33 7' in Riche E. End S. Radius Waddington / Harvest Lane
 B.M. 155.98 - R.R. Spike S. S. P. Pole S. Side 134' 17" N. of Center Cul-de-Sac

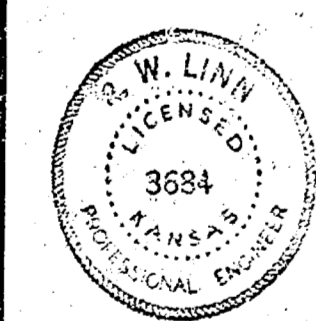


NOTE TO CONTRACTOR
 Coordinate Work With Sewer Contractor on a Line Crossing Pavement.
 Top of Curb Elevations Shown are For ROLL CURB, 0.30 to Fto.

SIDEWALK
 NOTE: To Field Engineer and Contractor.
 Grade Parking and Clear Right of Way for Proposed Sidewalk. Compact Backfill in Sidewalk Area. Sidewalk to be Constructed by "OTHERS"

EARTHWORK		QUANTITIES	
Excavation	Cu Yds	Comp. Fill	Cu Yds
740.6		228.9	
+10% 74.1		+10% 22.9	
Total 814.7		251.3	

B. E. SMITH
 LICENSED
 CIVIL ENGINEER
 No. 436
 KANSAS



SHEET 1 of 2

HARVEST COURT
 Lots 31 thru 35, Block 2, Westlink Village 5th
 Addn to and incl Cul-de-Sac.
26'-2'-30' ASPH CONC.
 (ROLL - TYPE - CURB)
 B. E. SMITH City Engineer
 CITY of Wichita, Kansas
 DATE APRIL 1967 Proj. No. C14-33