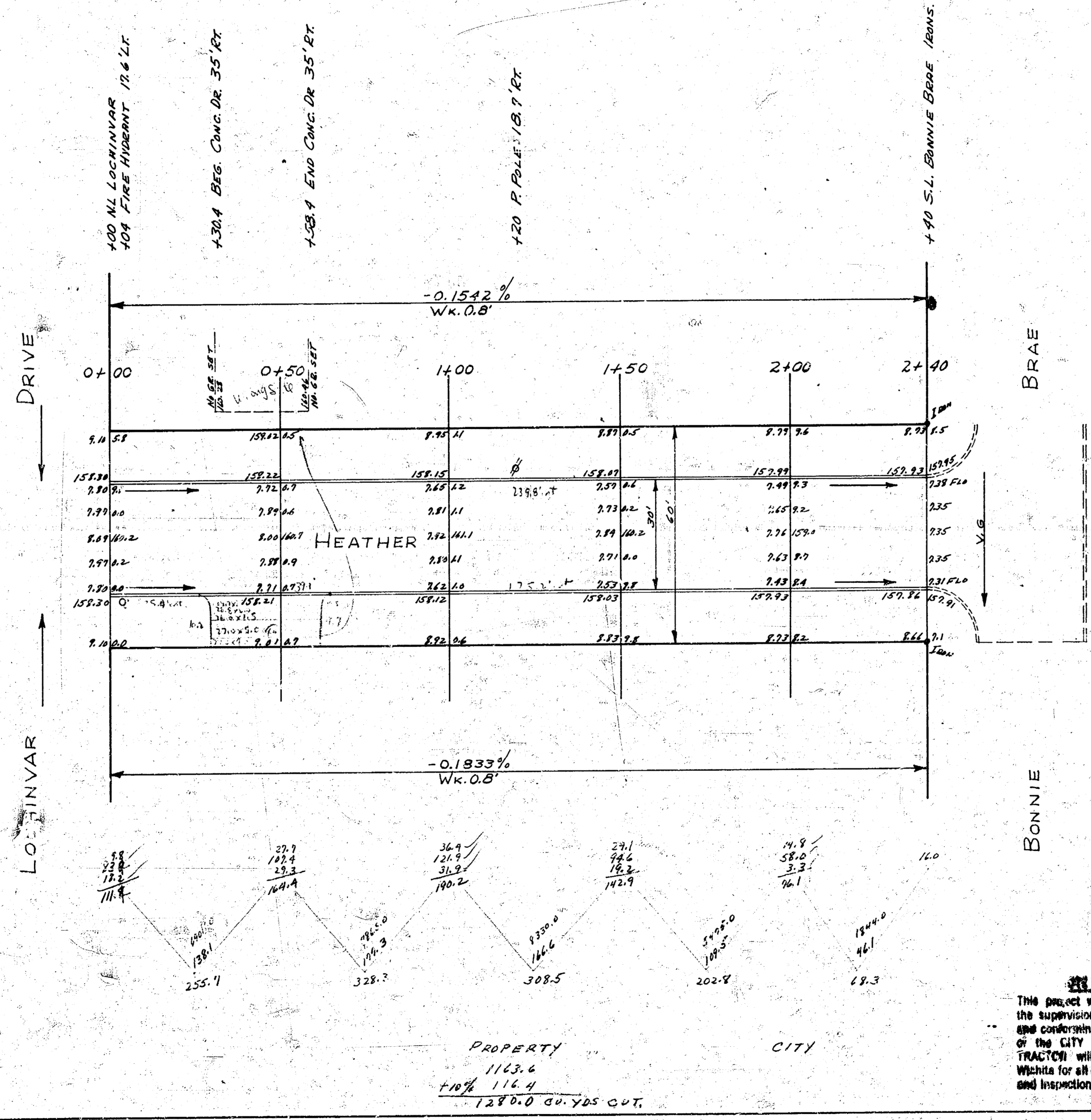


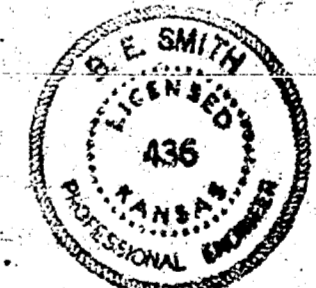
B.M. 151.73 4" ON TOP W. HANDRAIL POST S.S. RC BC 150' E of BONNIE BRAE & DOUGLAS
 B.M. 157.95 6" IN GLOBE N. CO. RETURN AT HEATHER W.L. BONNIE BRAE
 STATIONING & BASE LINE CHAINING EAST ON ☐



NOTE TO CONTRACTOR
 This project will be constructed under the supervision of the CITY ENGINEER and conforming to the SPECIFICATIONS of the CITY OF WICHITA. The CONTRACTOR will reimburse the City of Wichita for all cost of Engineering, Plans, and Inspection.

HEATHER
 N.L. LOCHINVAR To S.L. BONNIE BRAE
 30' CONC. CURB
 CITY OF WICHITA, KAN.
 B.E. SMITH CITY ENGINEER
 JUNE 1954 PRIVATE

NOT TO BE REPRODUCED
 This project will be constructed under the supervision of the CITY ENGINEER and conforming to the SPECIFICATIONS of the CITY OF WICHITA. The CONTRACTOR will reimburse the City of Wichita for all cost of Engineering, Plans, and Inspection.



PROPERTY 1143.6
 10% 114.4
 1287.0 cu. yds. CUT.

1 3 + e