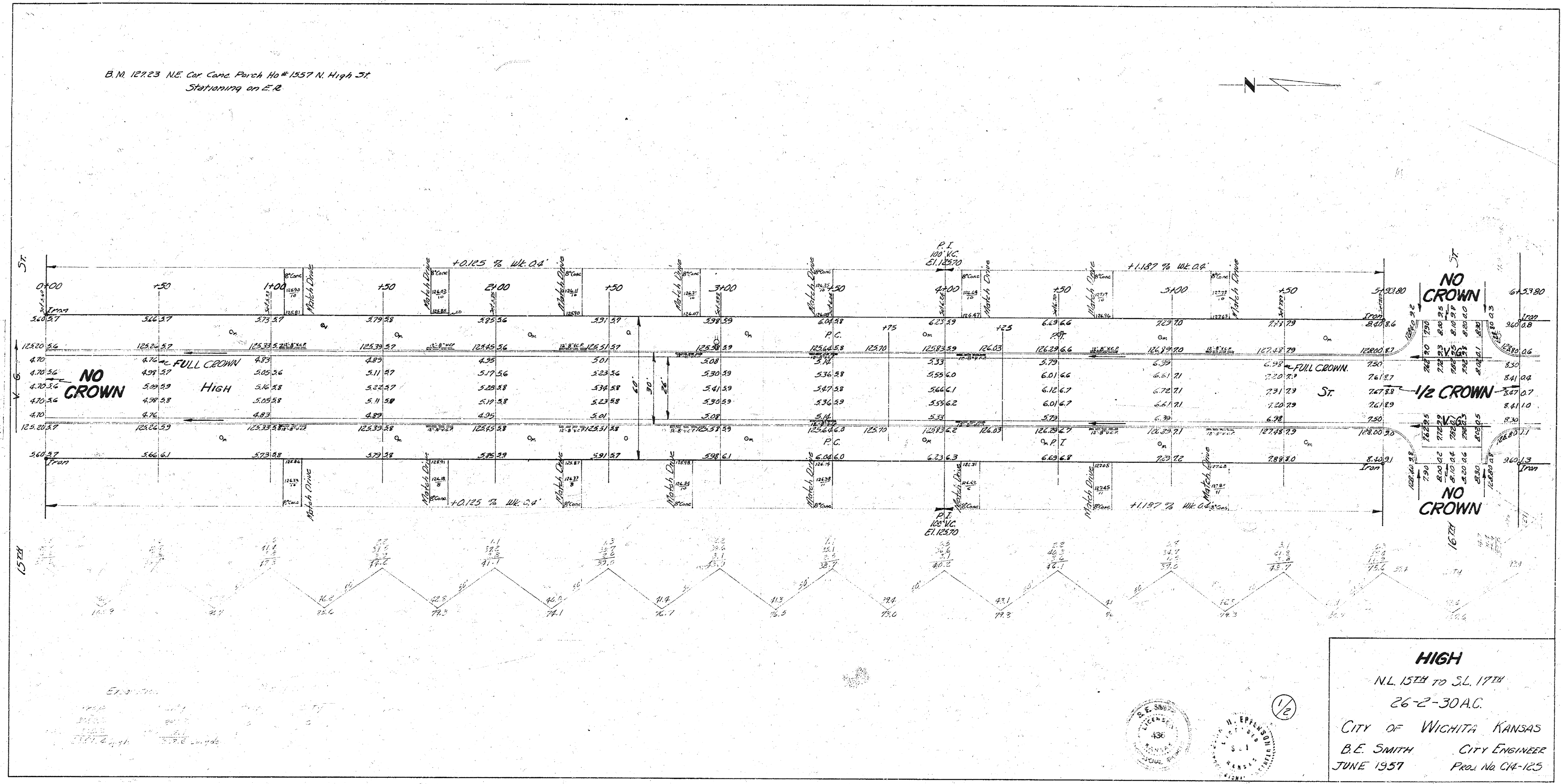
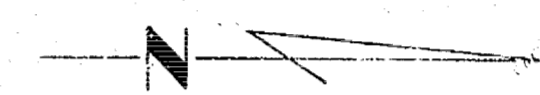
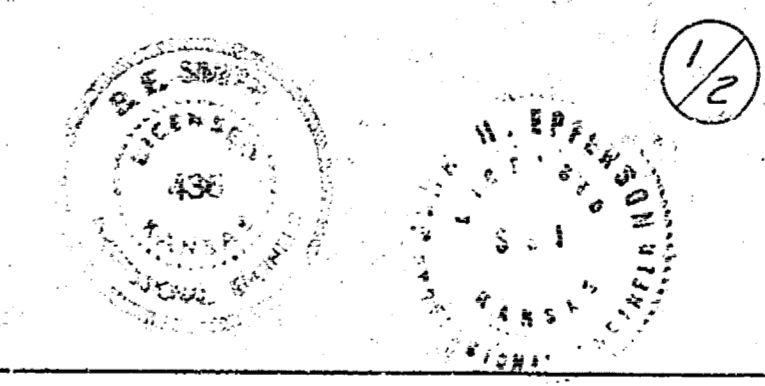


B.M. 12223 NE. Cor. Conc. Pave. Ho # 1557 N. High St.
Stationing on E.R.



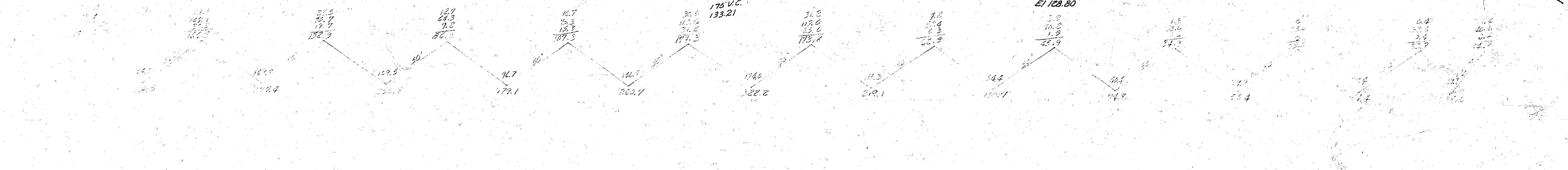
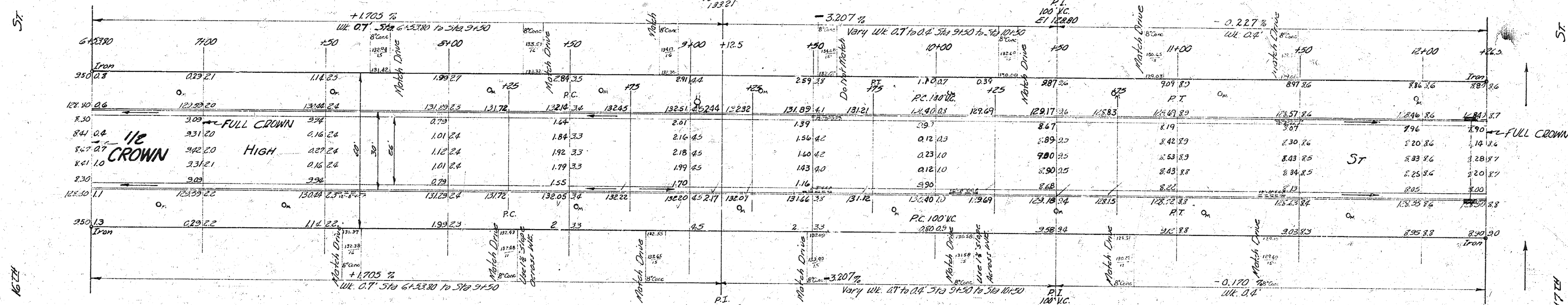
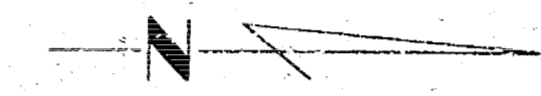
15th St

HIGH
 N.L. 15TH TO S.L. 17TH
 26-2-30A.C.
 CITY OF WICHITA KANSAS
 B.E. SMITH CITY ENGINEER
 JUNE 1957 PROJ. No. CH-125



B.M. 128.95 NE cor conc. porch Ho 1649 N. High St.

B.M. 130.80 NW cor conc. porch Ho 3517 W. 17th St.



HIGH
Prop. No. C14-125
②