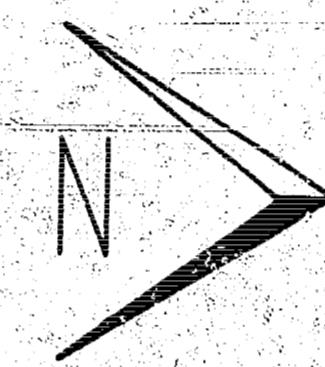
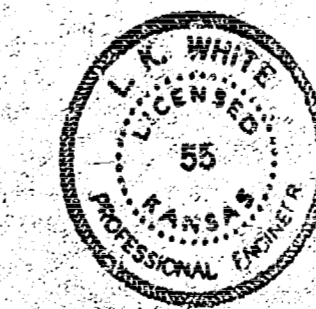
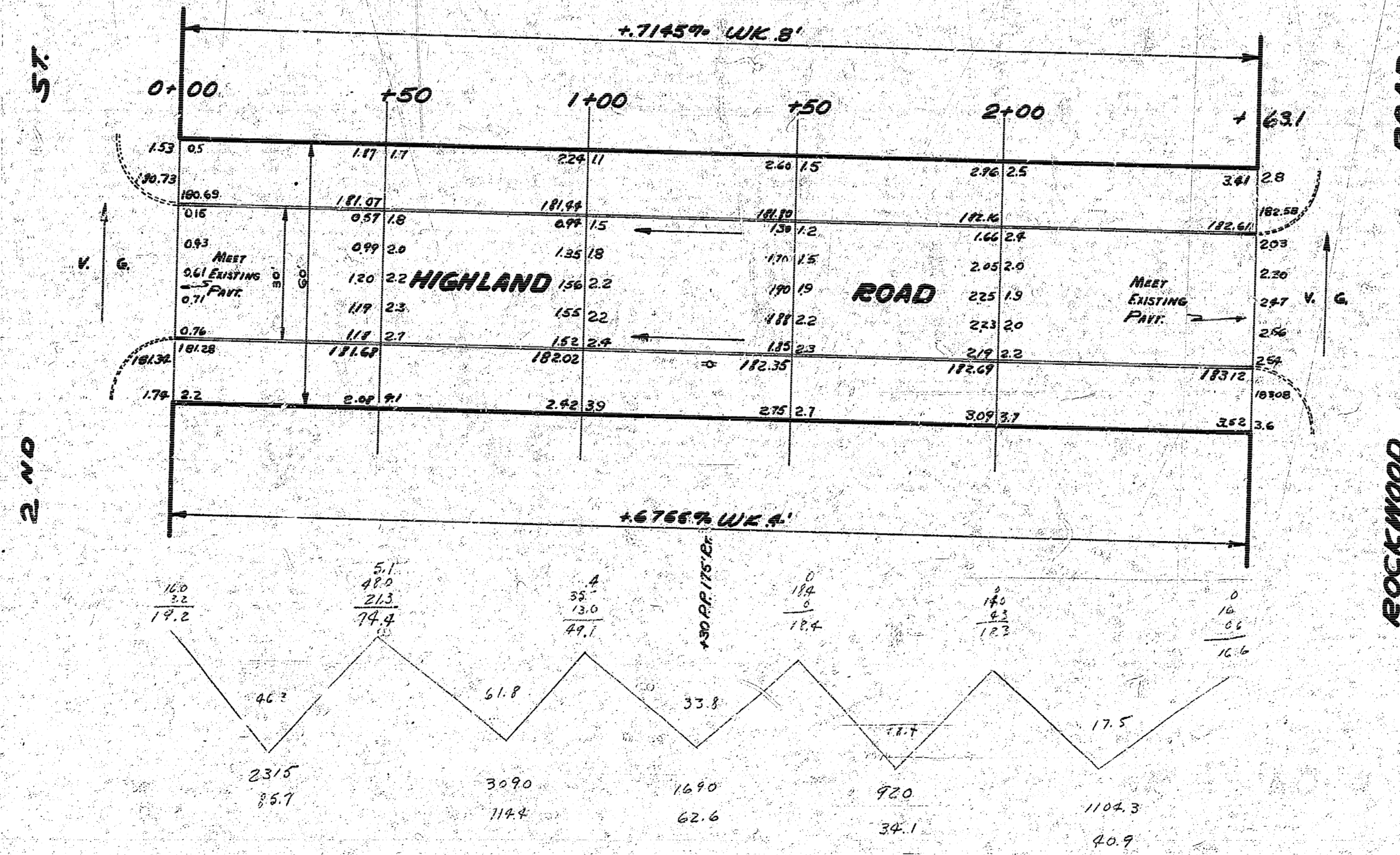


H-2

B.M. 176.83 G in GLOBE on E. Co. Just So. Pt. on 2nd ES PATTON & 51 2nd
 B.M. 184.76 M in MUELLER Top FIRE Hy. S.W. Cor. ROCKWOOD & HIGHLAND



371.8 cu yds Exc.



HIGHLAND ROAD
 SL ROCKWOOD TO NL 2ND
 30' CONC. & CB.
 CITY OF WICHITA KANSAS
 L.K. WHITE CITY ENGINEER
 MAY 1952 PROJ. No. 511-232