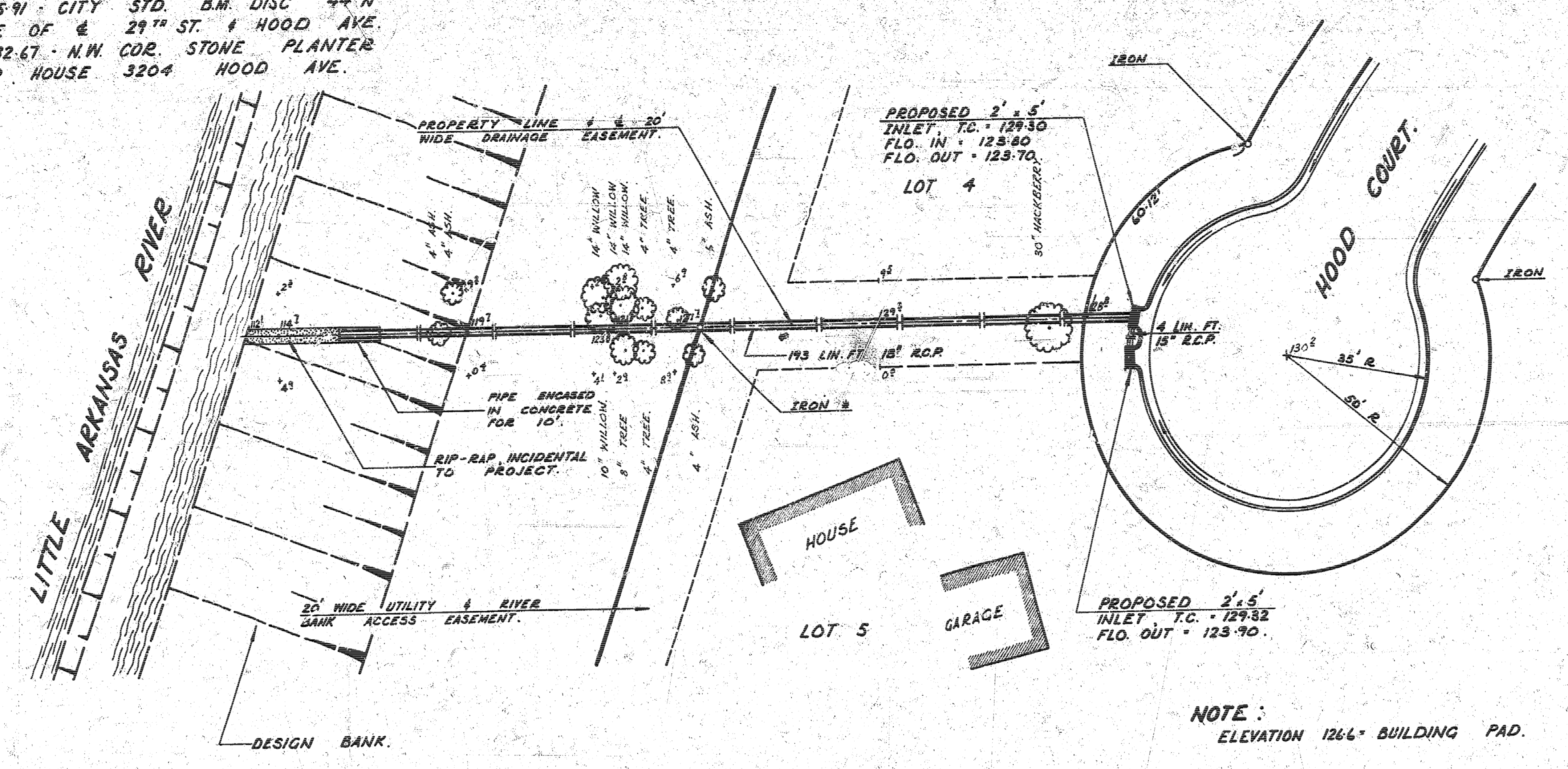


RIGGS SURVEYED 2-2-75
 PLAN
 AR 90

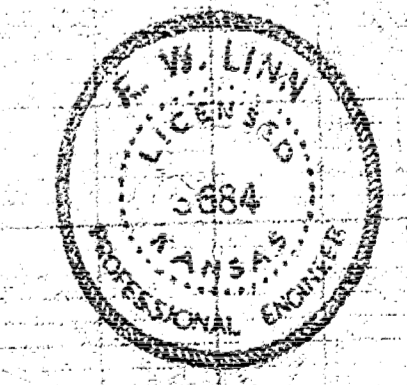
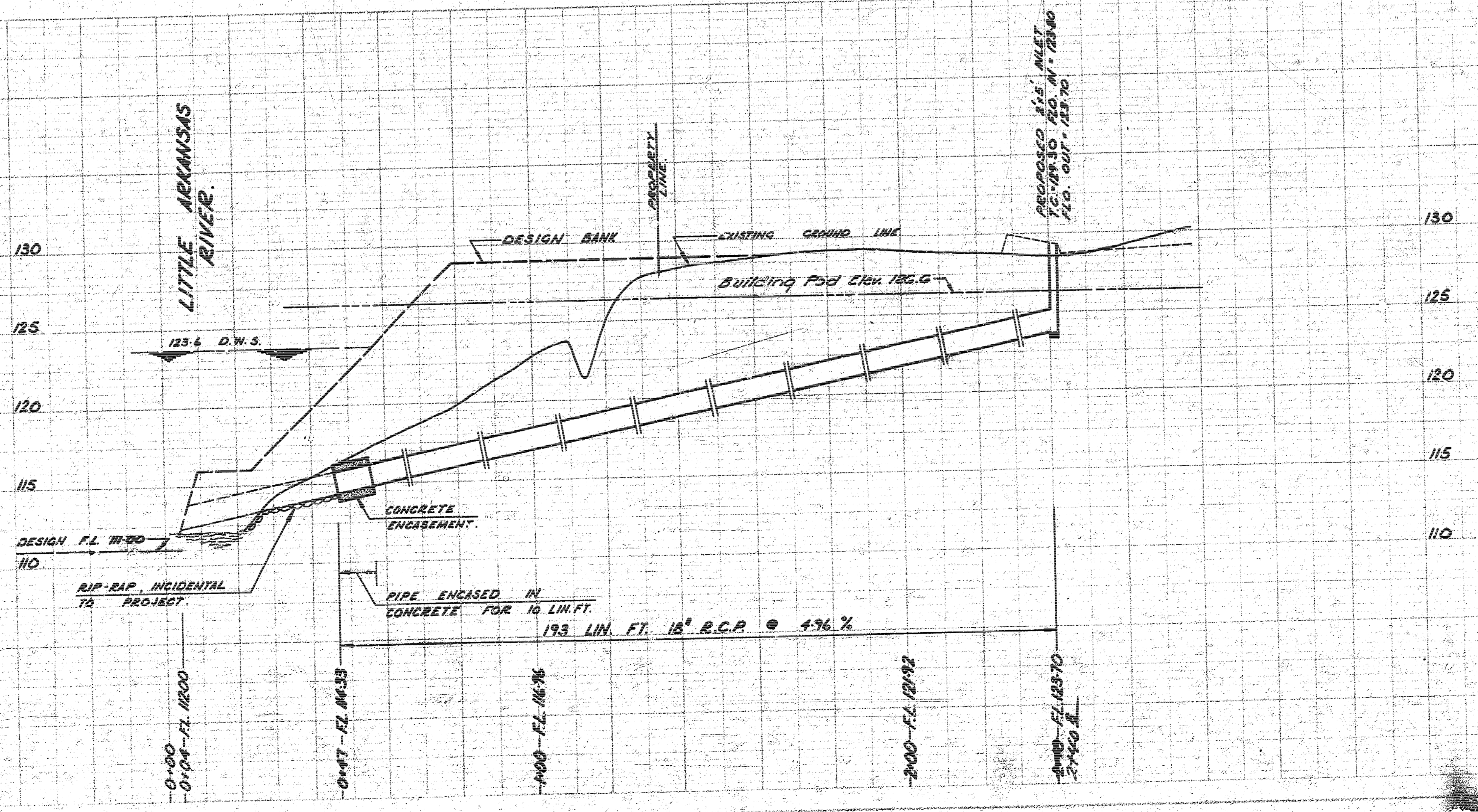
B.M. 125-91 - CITY STD. B.M. DISC 44" N
 1/2 32' E OF 29TH ST. & HOOD AVE.
 B.M. 132-67 - N.W. COR. STONE PLANTER
 BOX @ HOUSE 3204 HOOD AVE.

SCALES:
 PLAN: 1" = 20'
 PROFILE: 1" = 20'
 VERT: 1" = 5'



NOTE:
 ELEVATION 1266" BUILDING PAD.

* TIE IN IRON & REPLACE.



As Built 10-8-75
 "DRAINAGE" IN CONNECTION
 WITH PAVING OF HOOD CT.
 CITY OF WICHITA, KANSAS.
 R.W. LINN - CITY ENGINEER.
 DATE: PROJ. NO. DAKD 574081

14 5 3 12