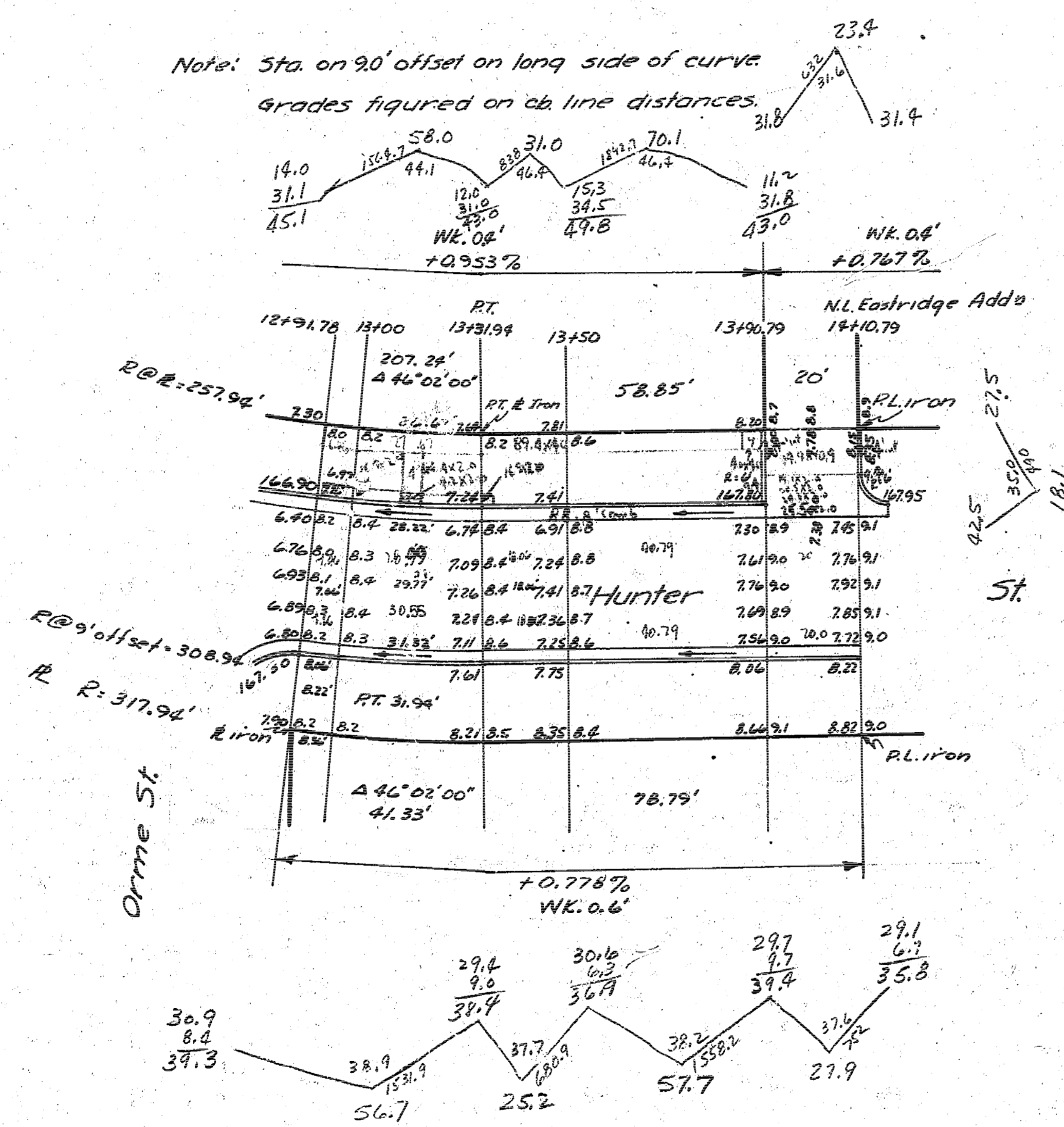


B.M. 167.66 S.E. Cor. PL Iron Orme & Hunter

Note: Sta. on 90' offset on long side of curve grades figured on ch line distances.



Wt Private	Excav.	E ¹ / ₂	Prop.
58.0			56.7
31.0			25.2
70.1			57.7
23.4			27.9
18.1			167.5
200.6		+10%	16.8
+10% 20.1			184.3
220.7			Cu. Yds.

E¹/₂ HUNTER ST.
13'-2-15 A.C.
Proj. No. C10-82

W¹/₂ HUNTER ST.
N.L. ORME ST. to N.L. Eastridge Addn
13'-2-15 A.C.

CITY OF WICHITA, KANS.
L.K. WHITE CITY ENGINEER
FEB. 1950 PRIVATE JOB

17055.59
667.50
1391.31
14064.43

4 3 3 (SE)