

# STREET IMPROVEMENTS FOR JULIA STREET

**FROM THE NORTH LINE OF KELLOGG DRIVE TO THE NORTH LINE OF TAFT AVENUE**

### GENERAL NOTES

1. Utility, s. l. lines, poles, valve boxes, meters, and structures are to be adjusted as necessary by others prior to construction unless the plans specifically call for their adjustment by the Contractor or unless the plans specifically identify a utility to be adjusted by its owner during construction. Existing utilities and their location, as shown on the plans, represent the best information obtainable for design. The contractor will be required to work around existing utilities within the right-of-way which do not conflict with proposed construction.
2. Rehabilitation of miscellaneous structures and access excavations which is to be retained shall be disposed of on sites to be provided by the Contractor. These sites shall be approved by the Engineer as to suitability, appearance and site location. Locations that, in the opinion of the Engineer, will leave an unsightly appearance will not be approved.
3. The City of Wichita's Sewer Maintenance Division of the Department of Water and Sewer Pollution Control has tolerated encroachment within the limits of the project and has found no defects requiring repair. The Division shall be notified and afforded the opportunity to re-tolerate sewer lines after adequate work has been completed and prior to present construction to determine if such sewer lines have been damaged by the Contractor's operations. Damaged sewer lines will be repaired by the Contractor, as directed by the Engineer, at the Contractor's expense. Television logs are available for inspection by the Contractor during normal office hours at the Sewer Maintenance Division's office at City Hall.
4. No more than 8' drive 24' feet in width, or equivalent combinations thereof, are to be constructed with this project.
5. Sidewalks within the limits of the project shall be removed and replaced by the Contractor as approved by the Engineer. Contractor will be required to make satisfactory provisions for soil delivery to properties affected by this project during its construction.
6. Limits of earthwork shall match existing ground elevations at the right-of-way line unless otherwise noted on the plans with a new finished grade elevation. When a new finished grade elevation is shown, the earthwork shall extend one foot beyond the right-of-way line and then sloped up or down using permissible slopes to match the existing ground surface.
7. Contractor shall give property owners written notice of this project, since yards will be lower than the new finished grade elevations at the right-of-way line, an opportunity to utilize excess excavated material from the project to upgrade their yards to grade to the new pavement. Contractor will be required to dump and spread the excess material as required by the specifications when requested by the property owner. The Contractor shall ascertain that a dirt order form has been properly executed by the property owner before any such excess material is delivered to such properties.
8. The Contractor shall be responsible for preserving property lines. The Contractor will be required to re-establish property lines which are damaged or destroyed by his construction operations. Such lines shall be re-established by a licensed land surveyor in accordance with state laws.
9. Driveway widths and locations shown on the plan are tentative. Contractor will be required to obtain properly executed driveway request form signed by property owner or his authorized representative verifying such driveway widths and locations. Such forms shall be submitted to the Engineer for his review and approval.
10. The Contractor shall adjust Water Valve boxes and Fire Hydrants as directed by the Engineer at the price bid for said adjustments. The Water Department shall field locate water valves one line during construction when requested by the Contractor. It shall be the Contractor's responsibility to preserve such field locations during the construction process. Water valves, water valve boxes or fire hydrants damaged during construction shall be repaired by the contractor at his own expense.
11. The Contractor shall give all property owners and/or tenants of developed property abutting the project limits a minimum of ten (10) days advance notice prior to start of construction.
12. The Contractor shall coordinate construction from sta. 0+00.00 with Taft Avenue Improvements, proj. #472-76-245-81737-000-000-001. Construction of the project shall not begin prior to completion of Lines 1 and 3, S.M.S. #351, proj. #469-76-245-81737-000-000-001.

PROJECT NUMBER

**472-76-245-81737-000-000-001**

**CITY OF WICHITA, KANSAS**

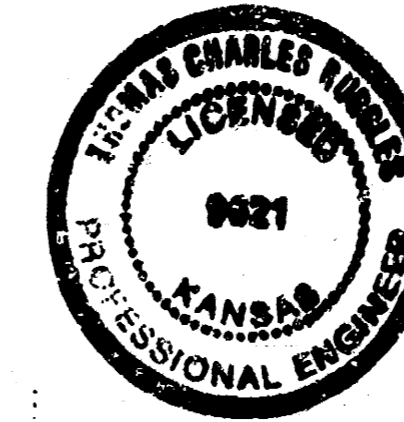
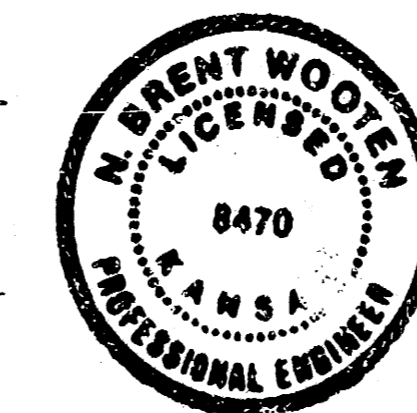
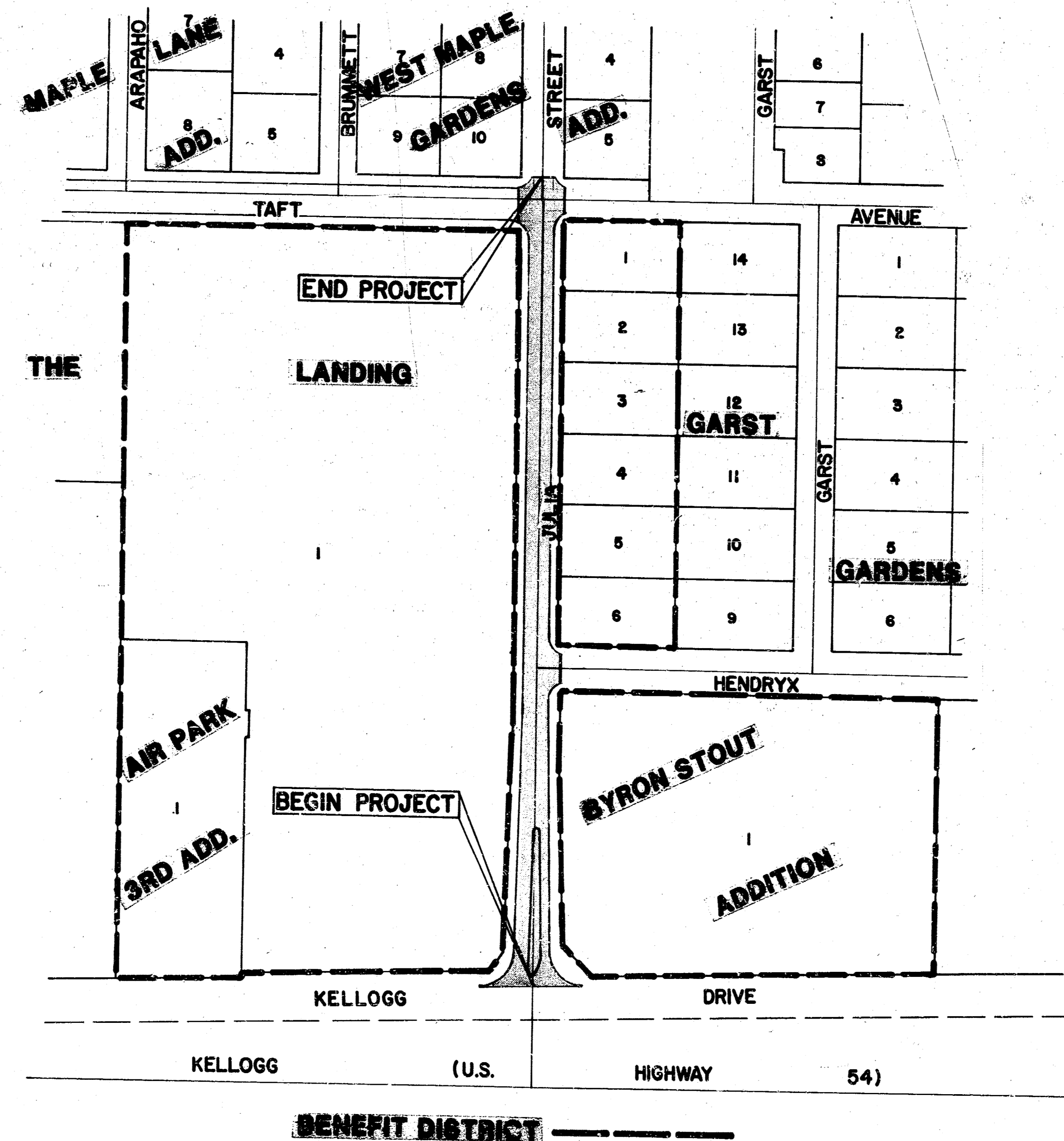
**MICHAEL E. LINDEBAK CITY ENGINEER**

### INDEX OF SHEETS

Title Sheet	1
Typical Median Section	2
Typical 41', 10" A.C. Pavement Section	3
Typical 8" Concrete Pavement Section	4
Plan Sheet, Sta. 0+10.30 thru Sta. 4+00	5
Plan Sheet, Sta. 4+00 thru Sta. 9+00	6
Plan Sheet, Sta. 9+00 thru Sta. 11+82.88	7
Earthwork Sections	8-10

### BENCH MARKS

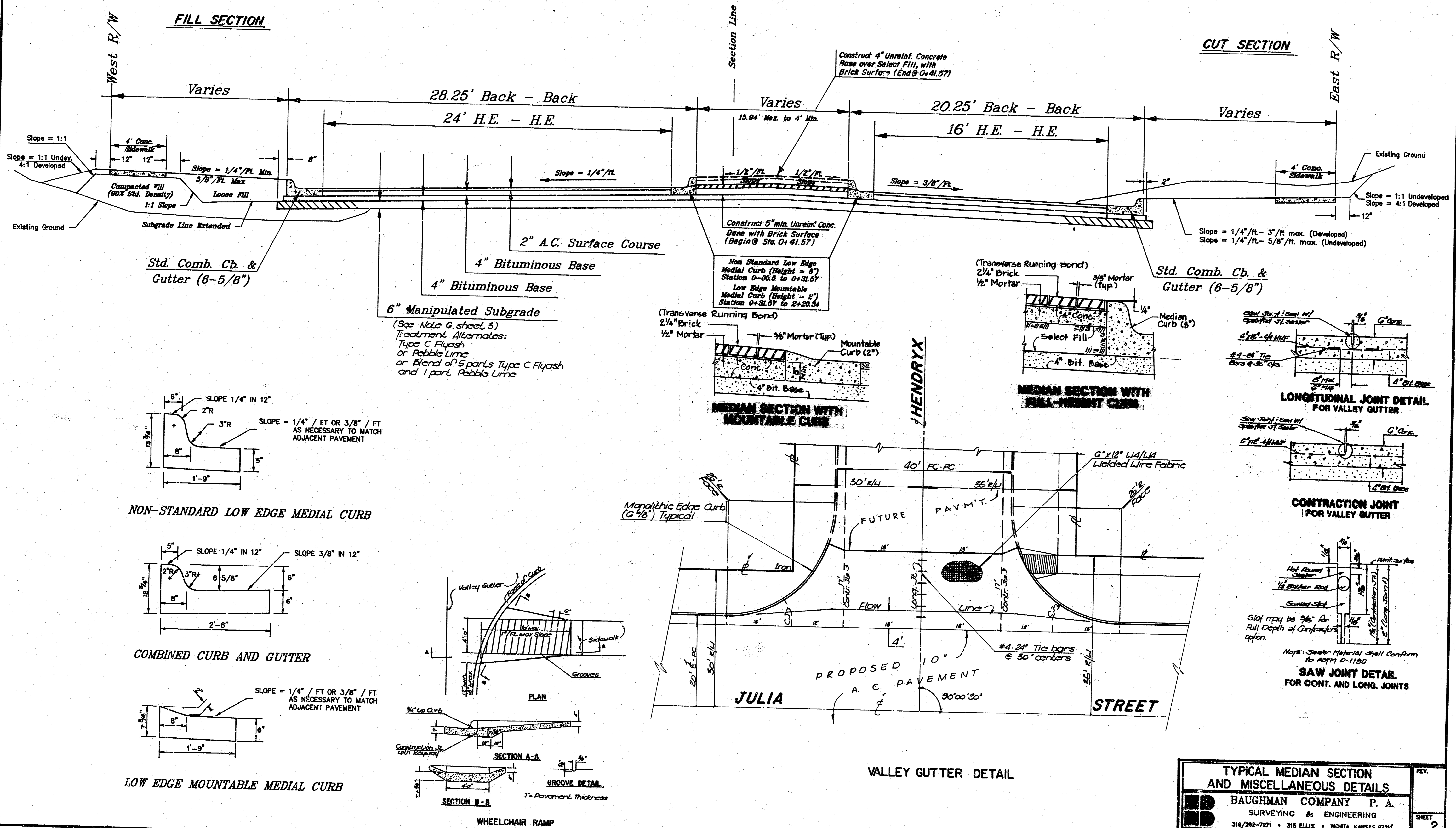
- No. 1: Railroad spike in West Rice Power Pole 23' E. & 23.5' S. of E. Hendryx and Julia City Datum  
Elevation 118.50
- No. 2: Railroad spike in South Rice Power Pole 127' E. of East line Garst & 25' N. of Taft City Datum  
Elevation 118.97
- No. 3: Railroad spike in Power Pole @ the Southwest Corner of Wichita Inn  
Elevation 121.70  
City Datum



STREET IMPROVEMENTS FOR JULIA STREET			
<b>BAUGHMAN COMPANY P. A.</b> SURVEYING & ENGINEERING 316/282-7271 • 315 ELLIS • WICHITA, KANSAS 67211		REV.	
PROJECT NUMBER <b>472-76-245-81737-000-000-001</b>		SHEET <b>1</b>	
DESIGN C. Bohm	DRAWN R.J. Plush	APPROVED N.B. Locken	DATE April 1988
		SCALE 1" = 150'	T.F. 10

**FILMED FROM THE BEST AVAILABLE COPY**

**JULIA  
TYPICAL MEDIAN SECTION  
STA. 0+00.50 TO STA. 2+20.84**

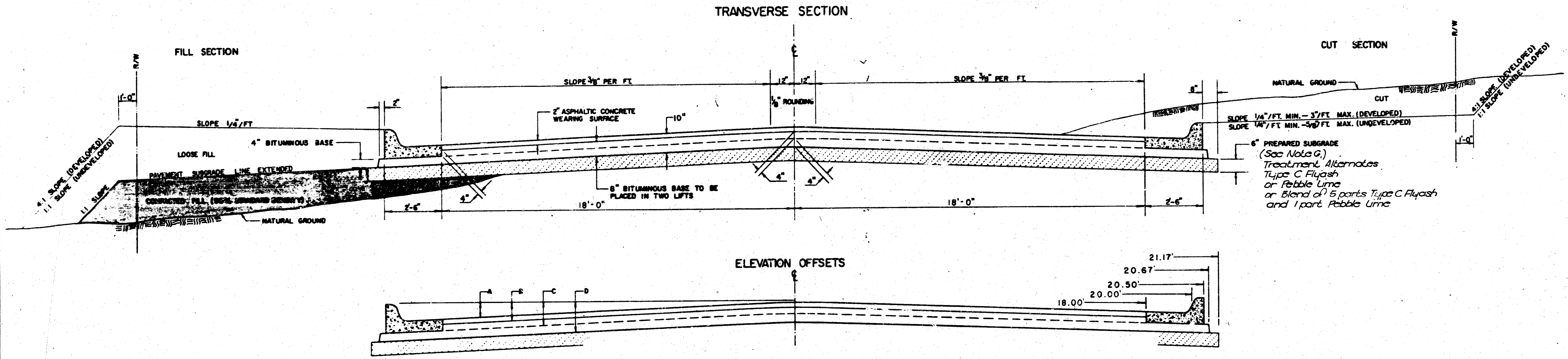


<b>TYPICAL MEDIAN SECTION AND MISCELLANEOUS DETAILS</b>				REV.
BAUGHMAN COMPANY P. A. SURVEYING & ENGINEERING 318/282-7271 • 315 ELLIS • WICHITA, KANSAS 67211				SHEET
DESIGN	DRAWN	APPROVED	DATE	OF
CMB				2
SCALE 1" = 3'				10

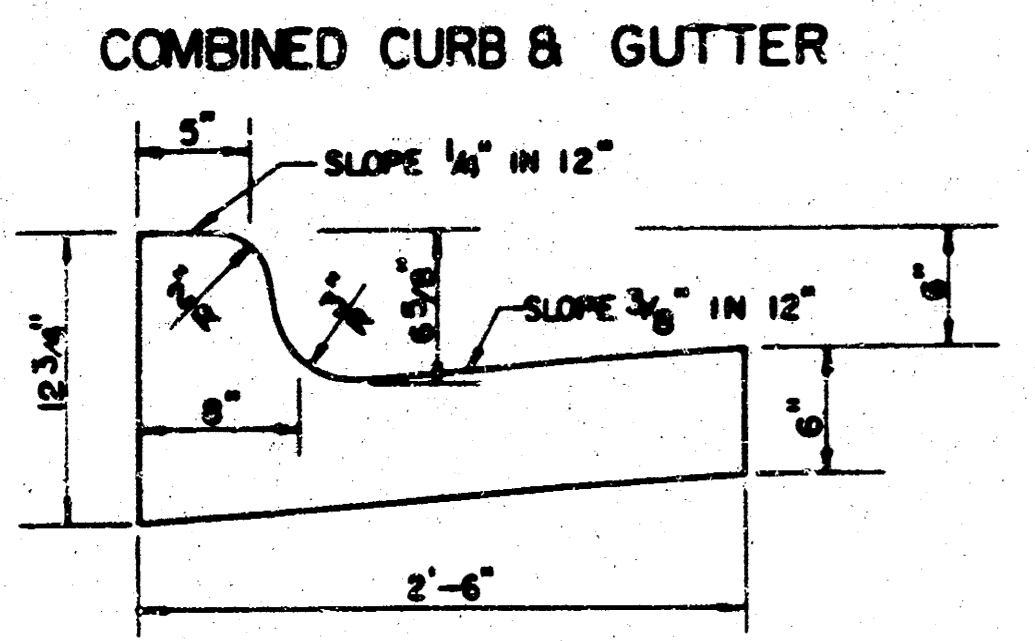
PROJ. NO. 472-76-245-81737-000-000-001

**FILMED FROM THE BEST AVAILABLE COPY**

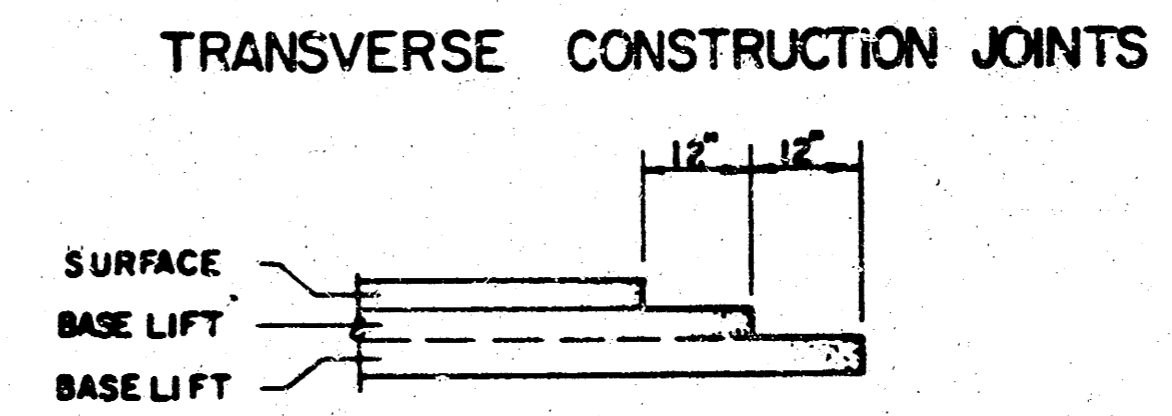
# TYPICAL 4' PAVEMENT DETAILS STA. 4+00.00 TO STA. 10+89.91



	DISTANCE FROM CENTERLINE (LT. & RT.)													
	0	2	4	6	8	10	12	14	16	18	20	20.5	20.67	21.17
A. TOP OF CURBS TO TOP OF SURFACE LIFT	-.05	-.01	.05	.11	.18	.24	.30	.36	.43	.49	—	—	—	—
B. TOP OF CURBS TO TOP OF UPPER BASE LIFT	.11	.16	.22	.28	.34	.40	.47	.53	.59	.65	—	—	—	—
C. TOP OF CURBS TO TOP OF LOWER BASE LIFT	.44	.49	.55	.61	.67	.73	.80	.86	.92	.98	1.05	1.06	1.07	—
D. TOP OF CURBS TO TOP OF SUBGRADE	.69	.74	.80	.86	.92	.98	1.05	1.11	1.17	1.23	1.30	1.31	1.32	1.33



- GENERAL NOTES**
- 1) THE ASPHALTIC CONCRETE PAVEMENT BETWEEN THE COMBINED CURB AND GUTTER SHALL BE PAID AS SQUARE YARDS OF 10" ASPHALTIC CONCRETE (8" BITUMINOUS BASE).
  - 2) THE BITUMINOUS BASE UNDER AND BEHIND THE COMBINED CURB AND GUTTER SHALL BE PAID AS SQUARE YARDS OF 4" BITUMINOUS BASE.
  - 3) A TACK COAT OF EMULSIFIED ASPHALT (SC-1H OR CSS-1H) SHALL BE APPLIED AT AN APPROXIMATE RATE OF 0.05 GALLONS PER SQUARE YARD BETWEEN EACH LIFT OF ASPHALTIC MATERIAL.
  - 4) BITUMINOUS BASE AND ASPHALTIC CONCRETE WEARING SURFACE SHALL BE PLACED WITH A LAYDOWN MACHINE HAVING AUTOMATIC CONTROLS FOR LINE AND GRADE.
  - 5) CONSTRUCTION JOINTS IN EACH LIFT SHALL BE STAGGERED A MINIMUM DISTANCE OF ONE (1) FOOT FROM JOINTS IN PRECEDING LIFTS AND PLACED SO THAT A JOINT WILL BE CONSTRUCTED ON THE CENTERLINE OF THE TOP LIFT.
  - 6) ALL TREATMENT ALTERNATES SHALL BE BID. THE TYPE OF TREATMENT TO BE USED SHALL BE DETERMINED BY THE ENGINEER AT THE TIME OF CONSTRUCTION. TREATMENT WILL BE PAID FOR AT THE PRICE BID FOR THE TYPE USED.

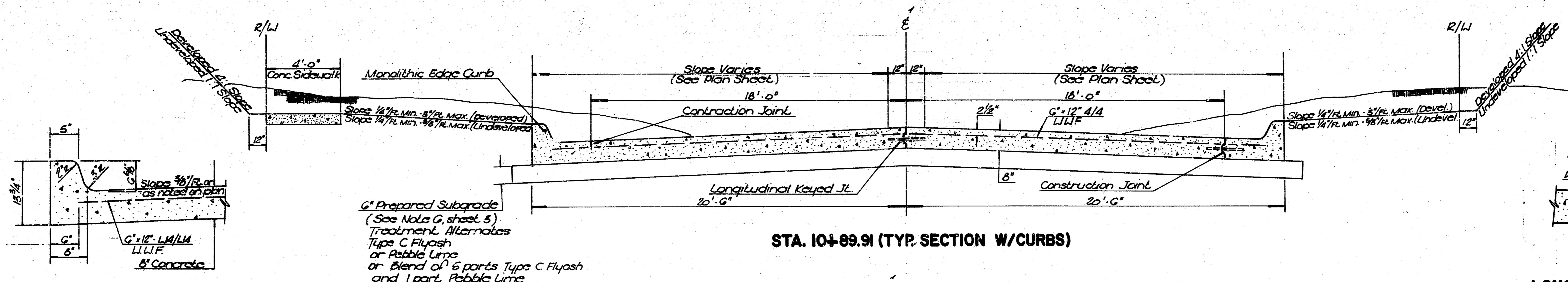


TRANSVERSE CONSTRUCTION JOINTS SHALL BE CONSTRUCTED IN FLEXIBLE BASE PAVEMENTS AT LOCATIONS WHERE PAVEMENT JOINTS EXISTING FLEXIBLE BASE PAVEMENT AS SHOWN BY THE DETAIL. ALL COSTS ASSOCIATED WITH THE CONSTRUCTION OF THE TRANSVERSE JOINT SHALL BE INCLUDED IN THE BID PRICE FOR SQUARE YARDS 10" ASPHALTIC CONCRETE (8" BITUMINOUS BASE).

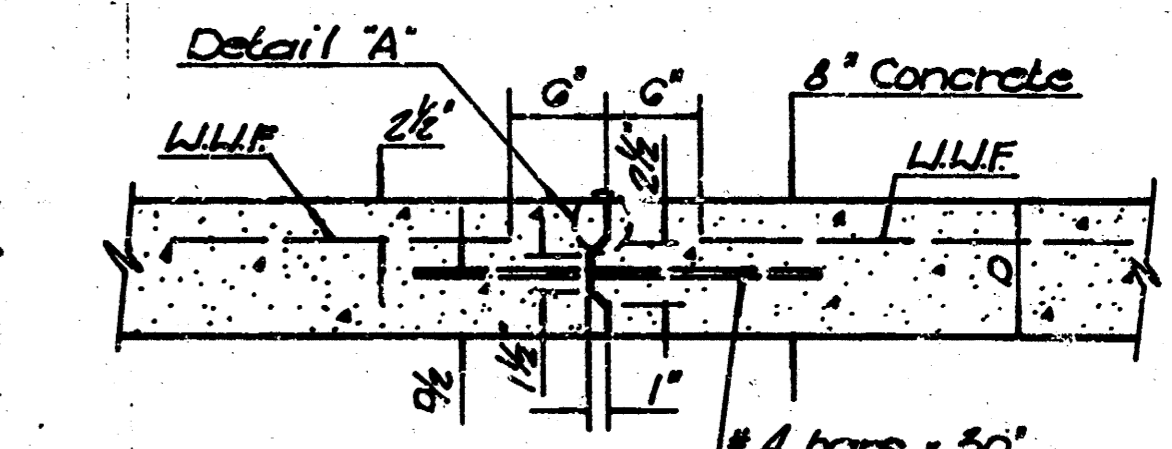
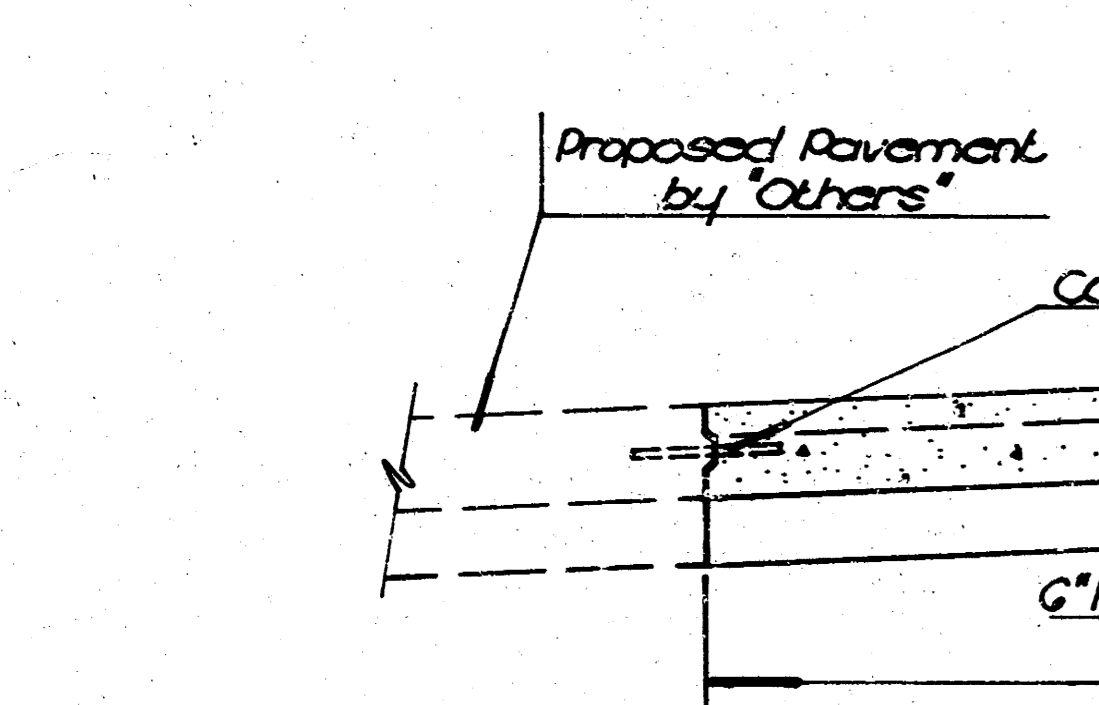
10 INCH RESIDENTIAL ASPHALTIC CONCRETE PAVEMENT WITH 8 INCH BITUMINOUS BASE	3
CITY OF WICHITA, KANSAS	10
PROJ. NO. 472-76-245-81737-000-000-001	

FILMED FROM THE BEST AVAILABLE COPY

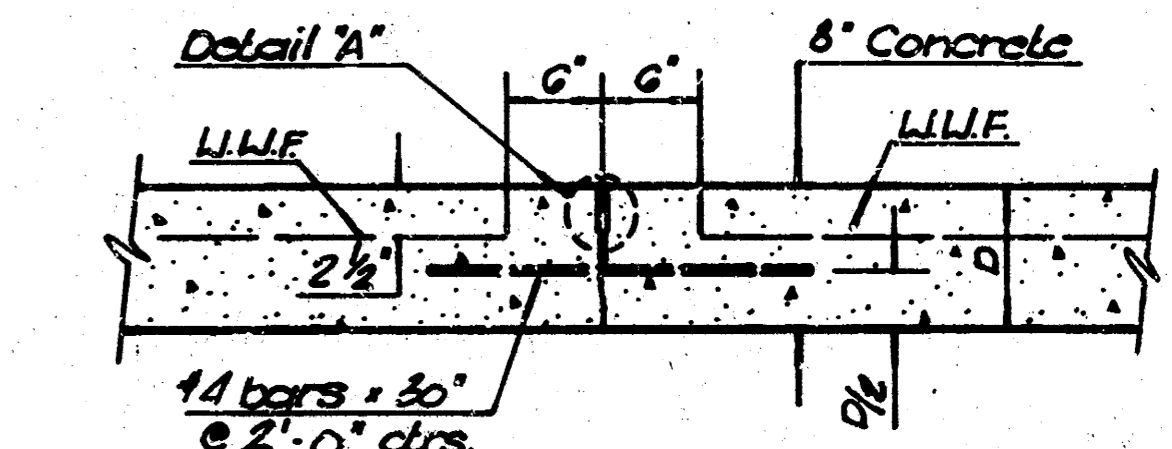
# TYPICAL CONCRETE PAVEMENT SECTIONS



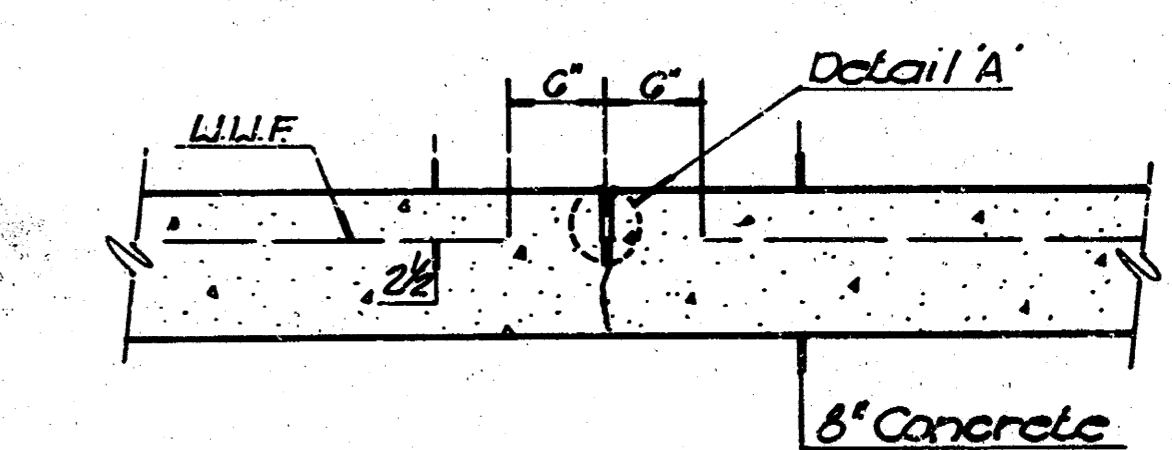
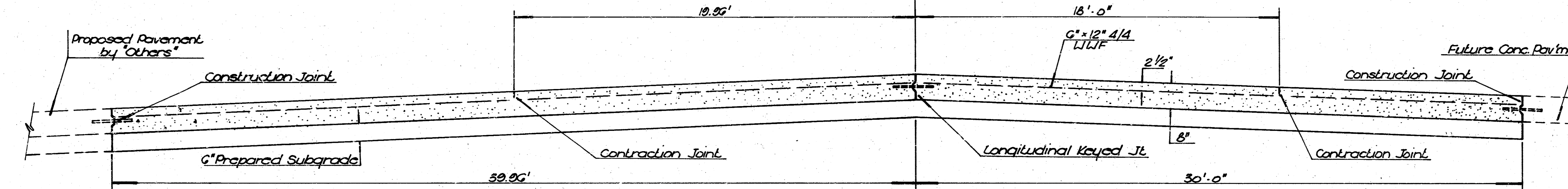
**MONOLITHIC CURB DETAIL**



**LONGITUDINAL KEYED JOINT DETAIL (CONSTRUCTION JOINT)**

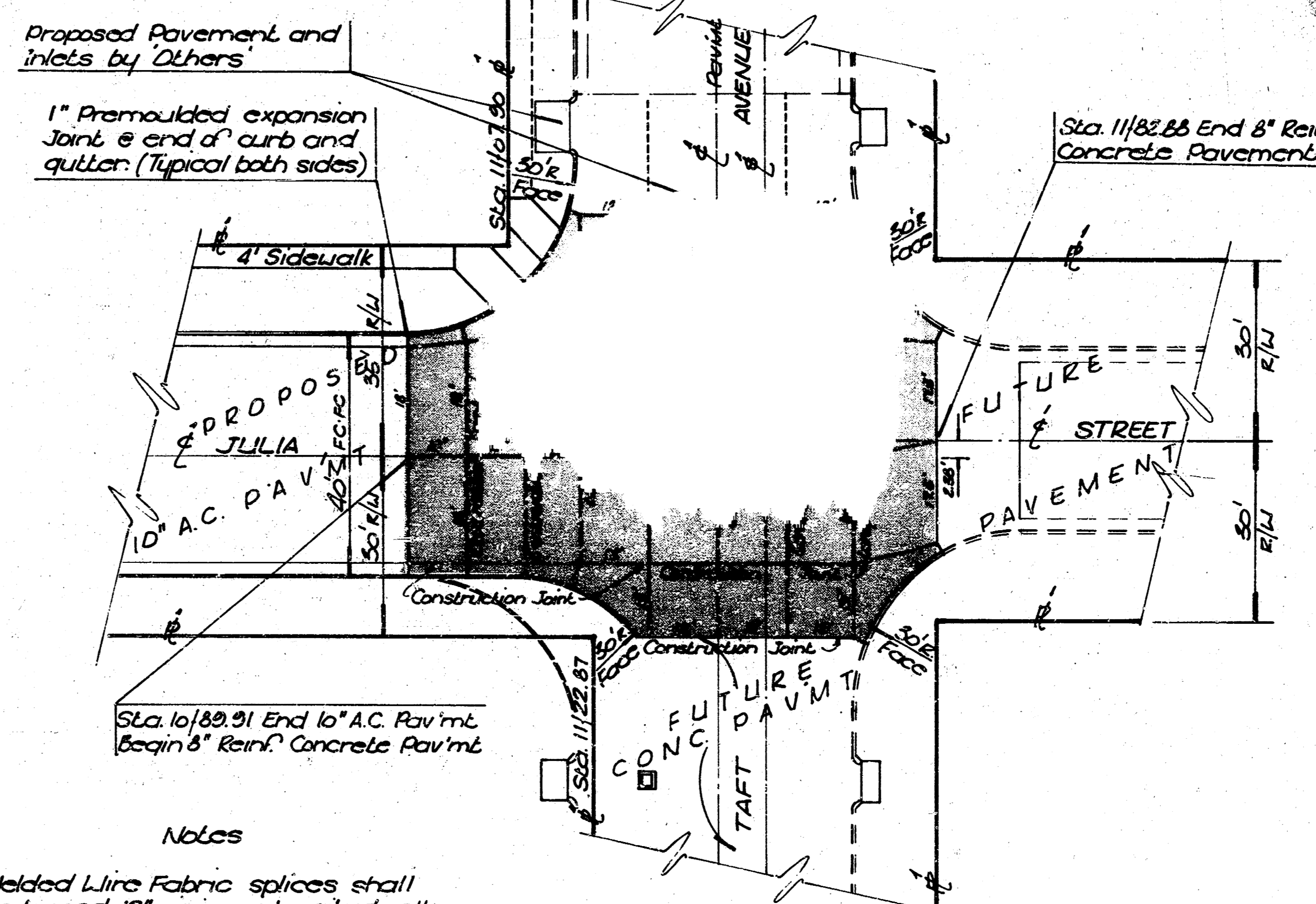
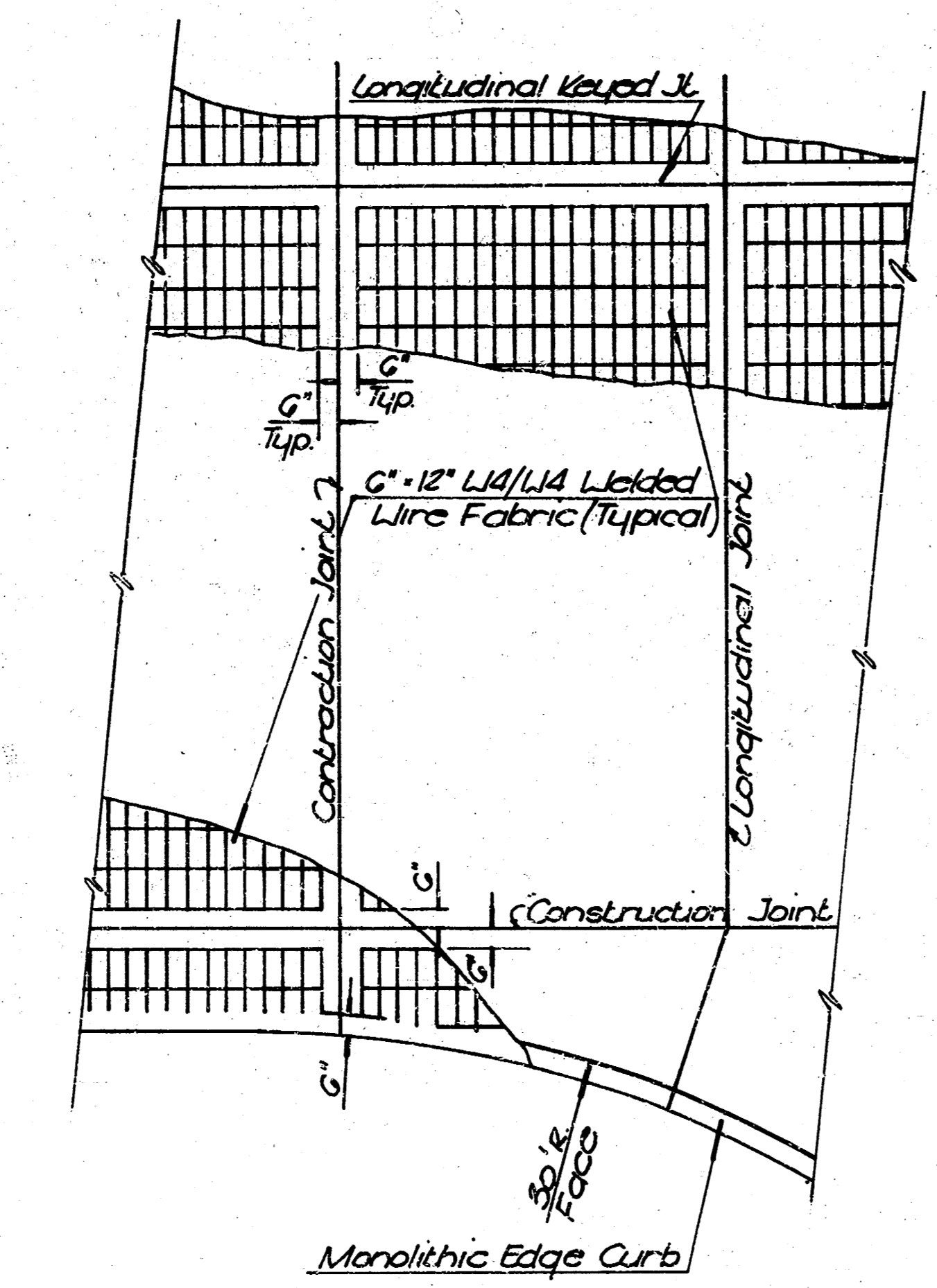
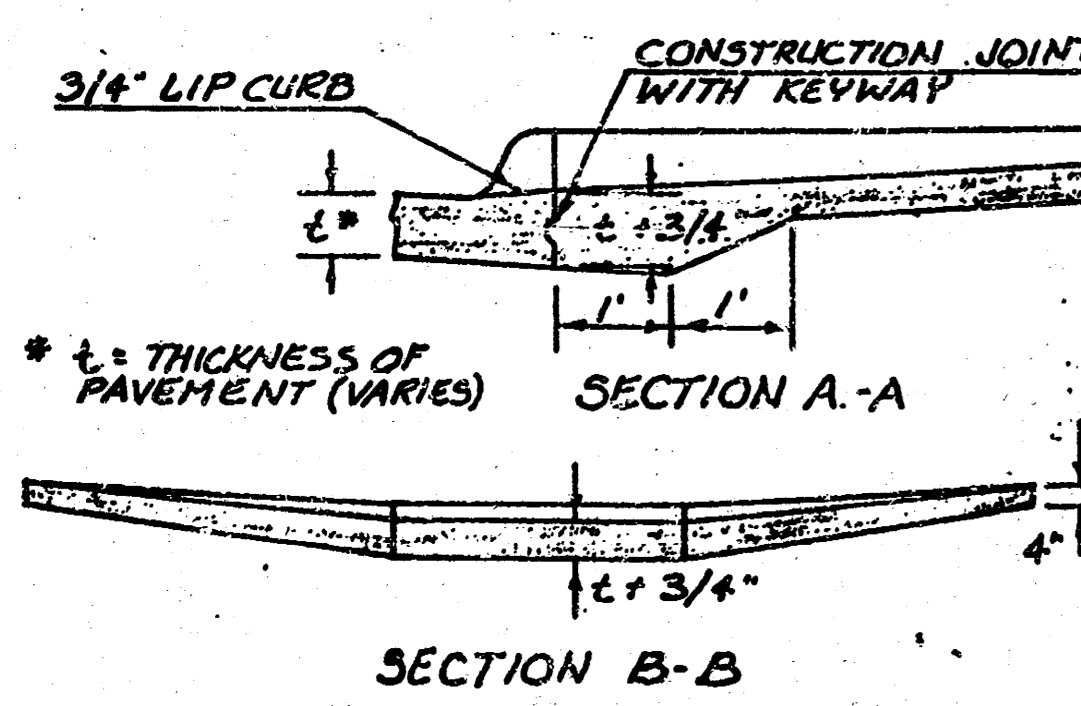
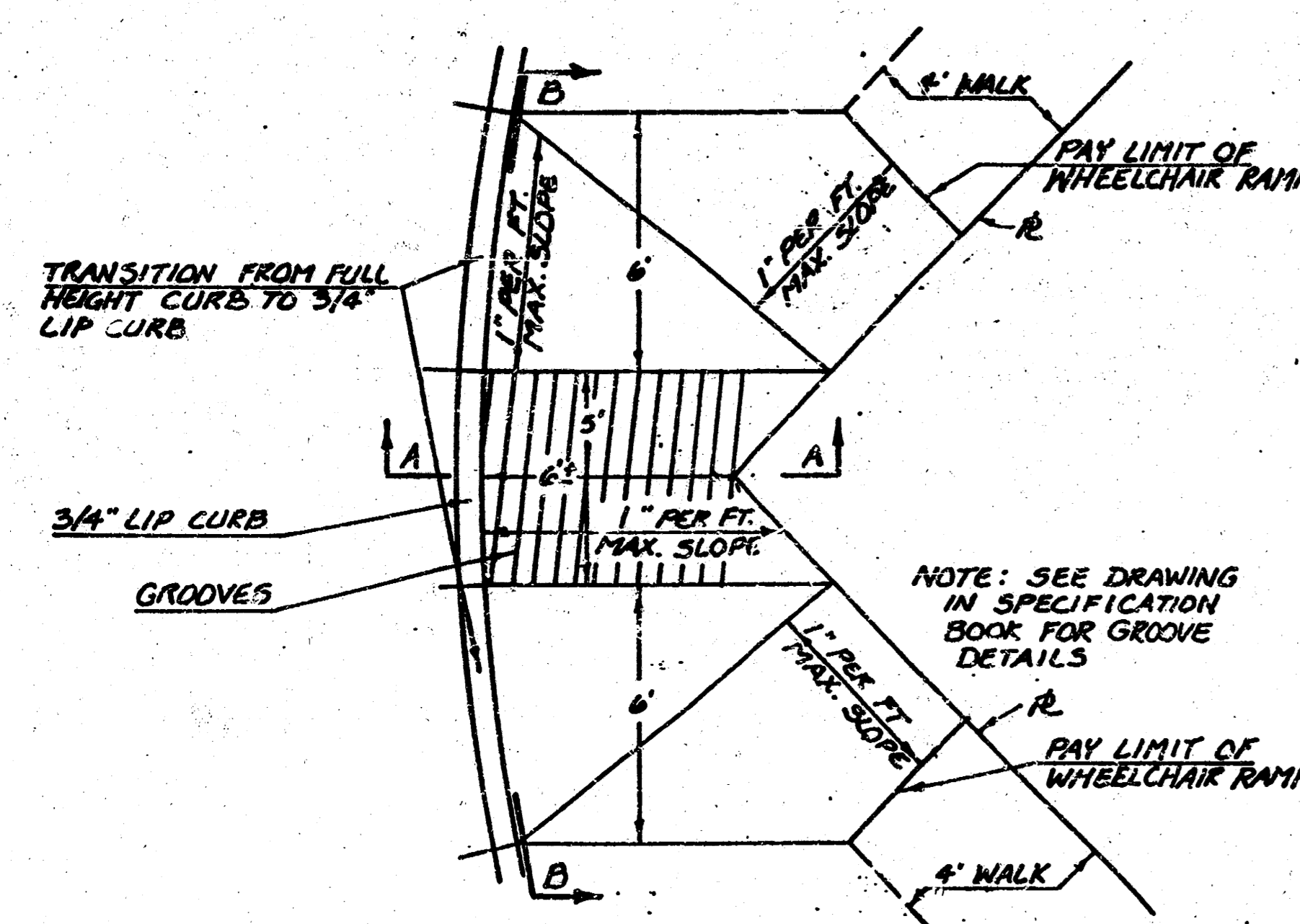


**LONGITUDINAL SAWED JOINT DETAIL (ALTERNATE)**

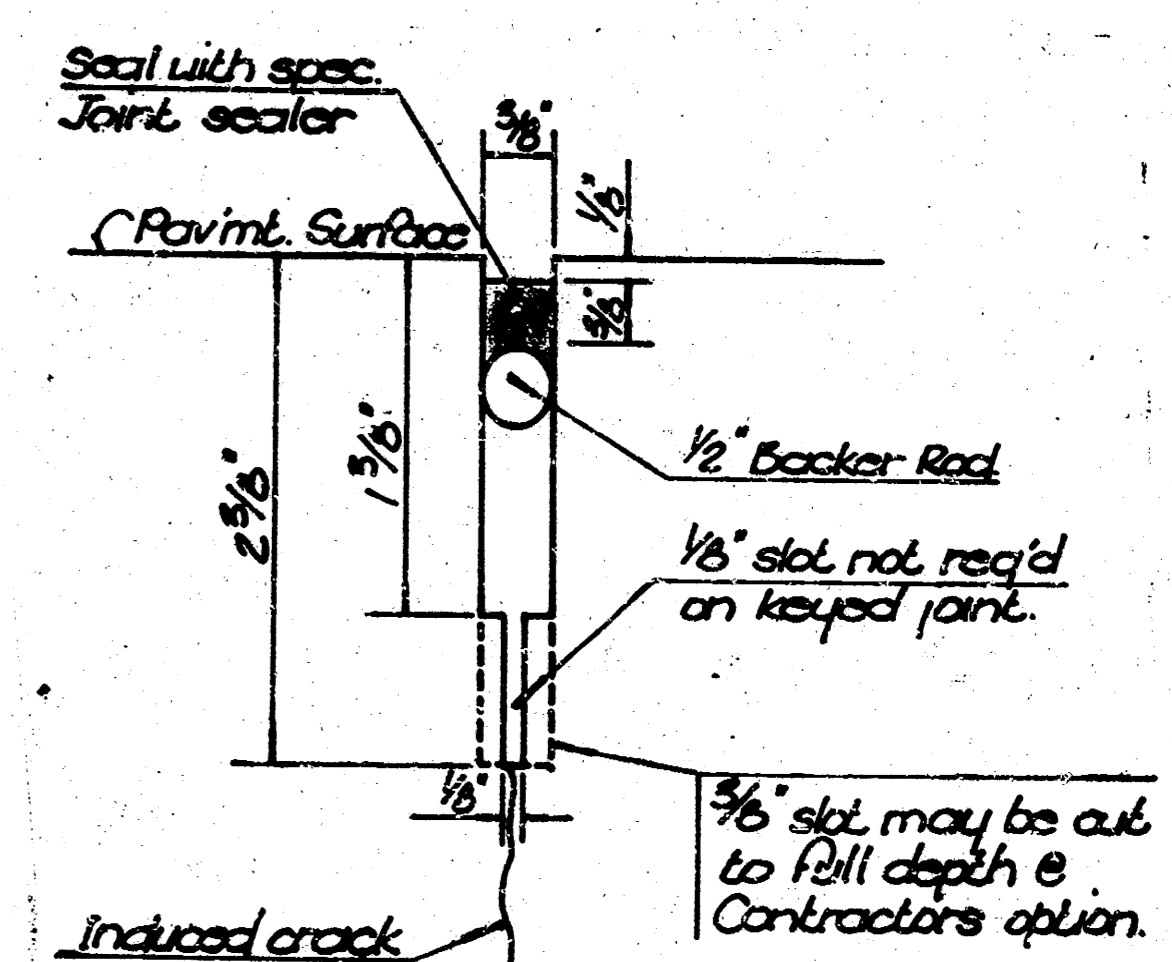


**CONTRACTION JOINT**

**STANDARD WHEELCHAIR RAMP CONSTRUCTION DETAIL FOR NEW STREET CONSTRUCTION ON RADIUS WITH 6 INCH FROM BACK OF CURB TO PROPERTY CORNER**



Notes  
Welded Wire Fabric splices shall be lapped 12" minimum longitudinally and 6" transversely. Splices shall be wire-tied @ maximum 2'-0" spacing.  
Concrete pavement surface shall not be lined, burlap drag and a light broom finish.

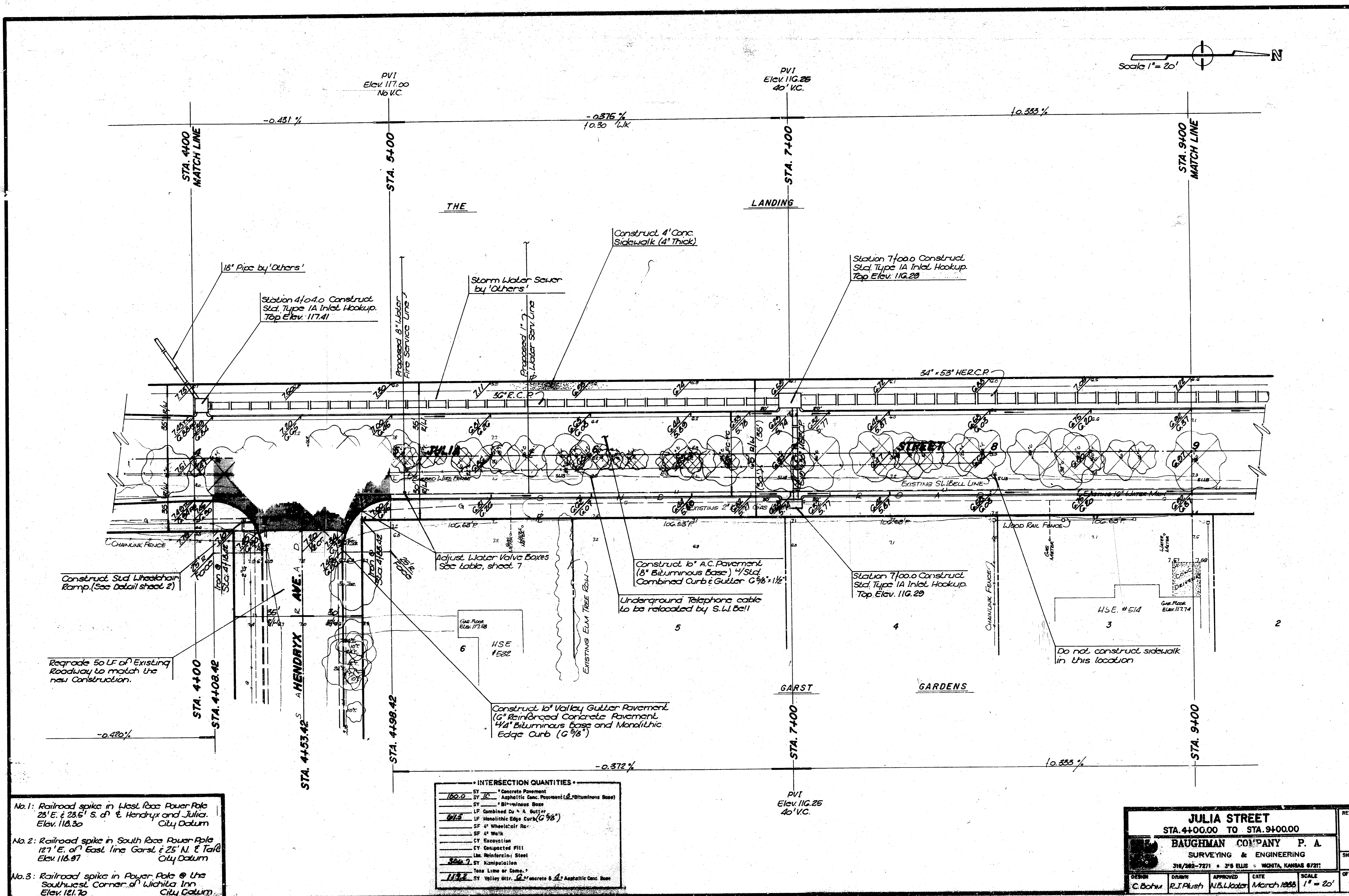
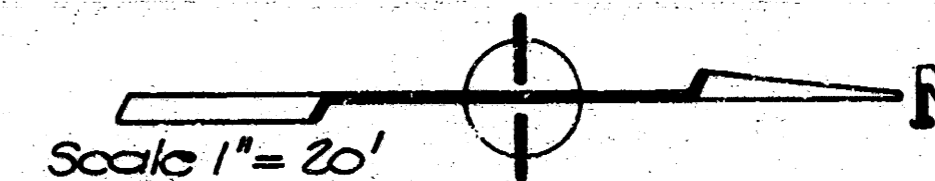


**DETAIL 'A'**

<b>TYPICAL 8 INCH CONCRETE PAVEMENT SECTION</b>				REV.
BAUGHMAN COMPANY P. A. SURVEYING & ENGINEERING				SHEET
316/262-7271 • 315 ELLIS • WICHITA, KANSAS 67211				4
DESIGN	DRAWN	APPROVED	DATE	SCALE
T.C.R.	R.J. Plush			No Scale
PROJ. NO. 472-76-245-81737-000-000-001				OF 10

FILMED FROM THE BEST AVAILABLE COPY





- No. 1: Railroad spike in West Race Power Pole 28' E. & 23.5' S. of Hendryx and Julia. Elev. 116.30 City Datum
- No. 2: Railroad spike in South Race Power Pole 127' E. of East line Garst & 25' N. & 7' E. of Julia. Elev. 116.97 City Datum
- No. 3: Railroad spike in Power Pole @ the Southwest Corner of Wichita Inn. Elev. 121.70 City Datum

INTERSECTION QUANTITIES

180.0	SY	Concrete Pavement
180.0	SY	Asphaltic Conc. Pavement (2" Bituminous Base)
57	SY	Bituminous Base
62.5	LF	Combined Curb & Gutter
62.5	LF	Monolithic Edge Curb (G 9/8)
	SF	Wheelcut R.
	SF	4" Walk
	CY	Excavation
	CY	Compacted Fill
	Lbs.	Reinforcing Steel
200.0	SY	Manipulation
		Tons Lime or Com.
113.2	SY	Valley Gutter, 2" Concrete & 2" Asphaltic Conc. Base

**JULIA STREET**  
STA. 4+00.00 TO STA. 9+00.00

**BAUGHMAN COMPANY P. A.**  
SURVEYING & ENGINEERING

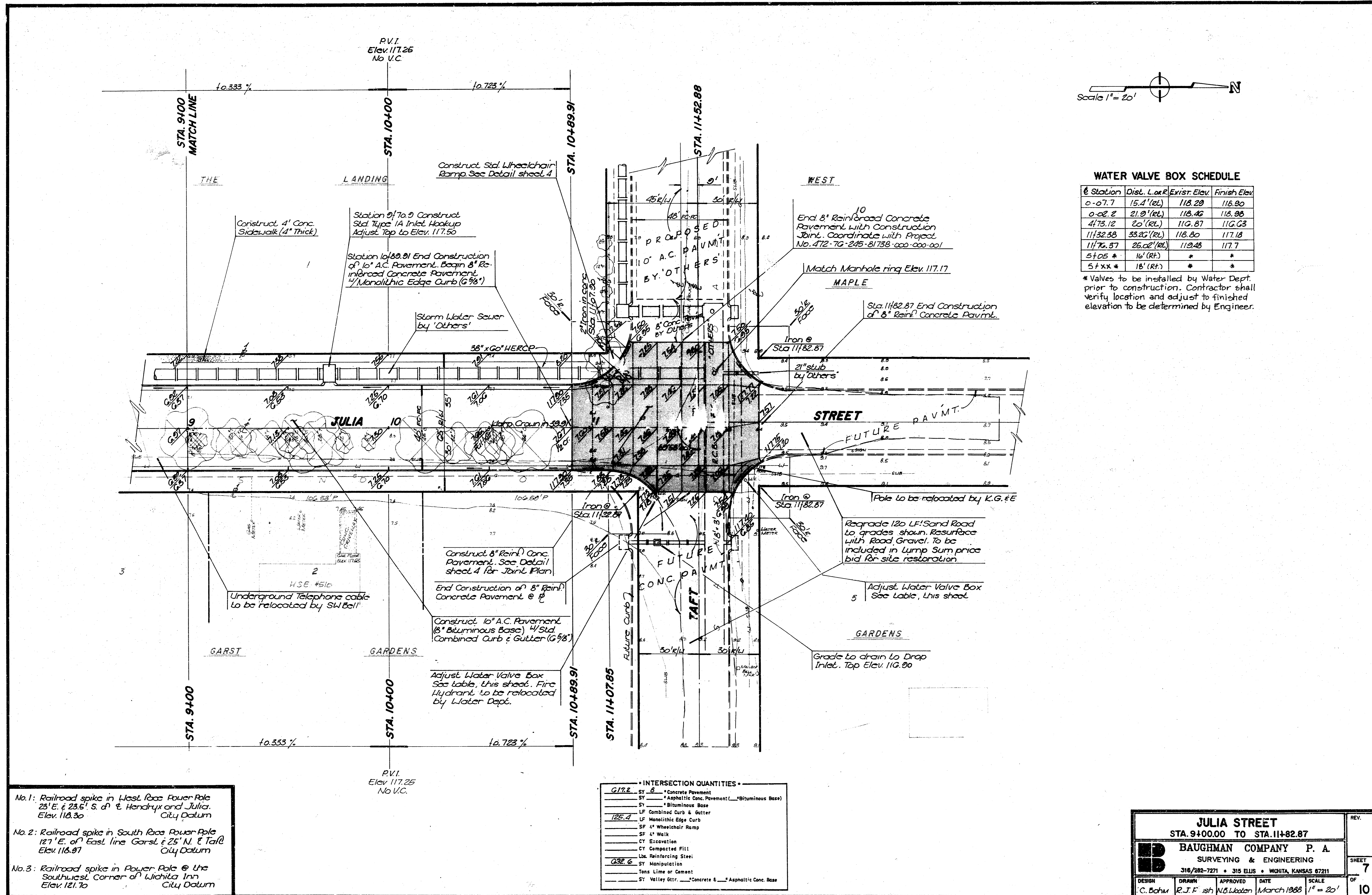
316/262-7271 • 3<sup>RD</sup> FLOOR • WICHITA, KANSAS 67212

DESIGN	DRAWN	APPROVED	DATE	SCALE	REV.
C. Bohm	R.J. Plush	N.B. Wacker	March 1958	1" = 20'	6

SHEET OF 10

PROJ. NO. 472-76-248-81737-000-000-001

FILMED FROM THE BEST AVAILABLE COPY



**WATER VALVE BOX SCHEDULE**

Station	Dist. L. or R.	Exist. Elev.	Finish Elev.
0+07.7	15.4' (R)	118.29	118.30
0+08.2	21.0' (R)	118.26	118.30
4+73.12	20' (R)	118.87	118.83
11+32.38	33.2' (R)	118.80	117.18
11+76.37	25.0' (R)	119.48	117.7
5+05 *	16' (R)	*	*
5+xx *	18' (R)	*	*

\* Valves to be installed by Water Dept. prior to construction. Contractor shall verify location and adjust to finished elevation to be determined by Engineer.

- No. 1: Railroad spike in West Race Power Pole 23' E. & 23.5' S. of Hendryx and Julia City Datum Elev. 118.30
- No. 2: Railroad spike in South Race Power Pole 127' E. of East line Garst & 25' N. & Taft City Datum Elev. 118.97
- No. 3: Railroad spike in Power Pole @ the Southwest Corner of Wichita Inn Elev. 121.70

**INTERSECTION QUANTITIES**

125.4	SY 8" Concrete Pavement
	SY 8" Asphaltic Conc. Pavement (Bituminous Base)
	SY Bituminous Base
	LF Combined Curb & Gutter
	LF Monolithic Edge Curb
	SF 4" Wheelchair Ramp
	SF 2" Walk
	CY Excavation
	CY Compacted Fill
	Lbs. Reinforcing Steel
Q32.6	SY Manipulation
	Tons Lime or Cement
	SY Valley Gtr. Concrete & Asphaltic Conc. Base

**JULIA STREET**  
 STA. 9+00.00 TO STA. 11+82.87

**BAUGHMAN COMPANY P. A.**  
 SURVEYING & ENGINEERING  
 318/262-7271 • 315 ELLIS • MONITA, KANSAS 67211

DESIGN: C. Bohm    DRAWN: R.J.F. ish    APPROVED: W.B. Watan    DATE: March 1988    SCALE: 1" = 20'

SHEET 7 OF 10

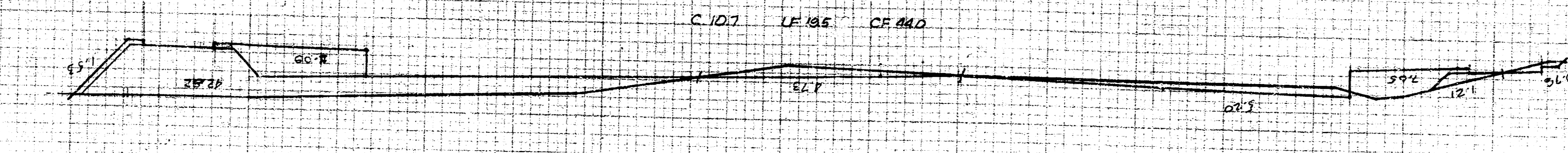
PROJ. NO. 472-76-245-81737-000-000-001

**FILMED FROM THE BEST AVAILABLE COPY**

Earthwork Cross Sections  
Julia Street

120

115



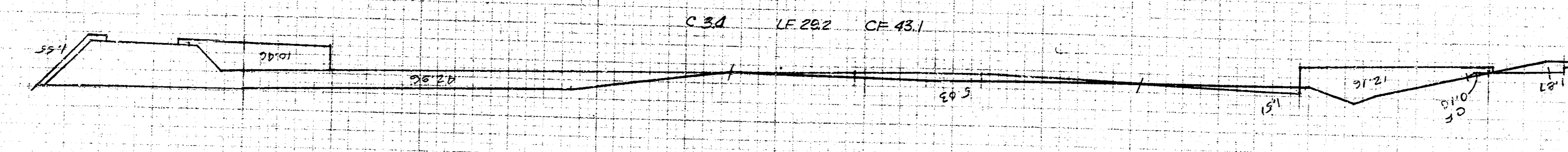
Sta. 2100

EXC. 13.1  
L.Fill 45.1  
C.Fill 20.6

50

120

116



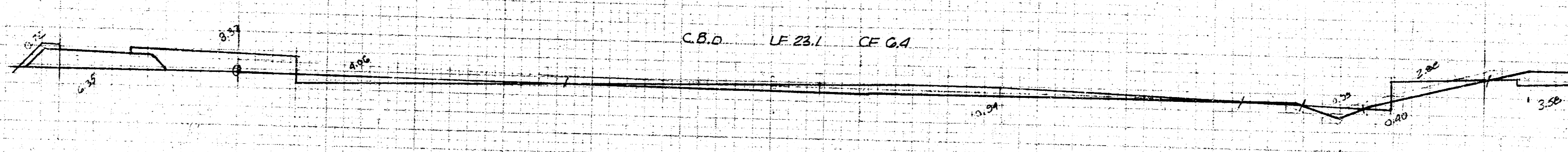
Sta. 1150

EXC. 10.6  
L.Fill 48.4  
C.Fill 45.8

50

120

115



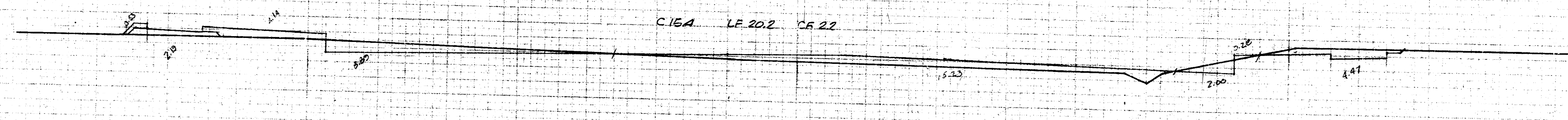
Sta. 1100

EXC. 21.7  
L.Fill 40.1  
C.Fill 5.0

50

120

115



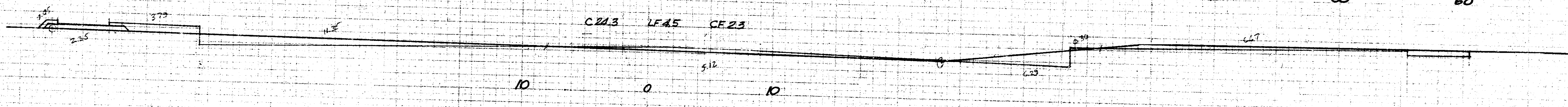
Sta. 0150

EXC. 18.9  
L.Fill 11.7  
C.Fill 2.1

25.61

120

115



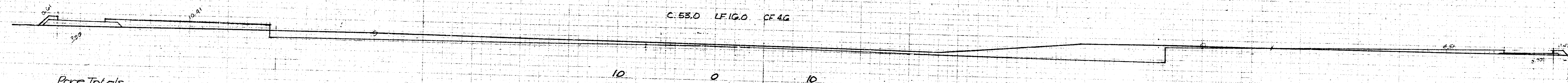
Sta. 0125

EXC. 23.5  
L.Fill 7.6  
C.Fill 2.5

19.89

120

115



Sta. 0104.50

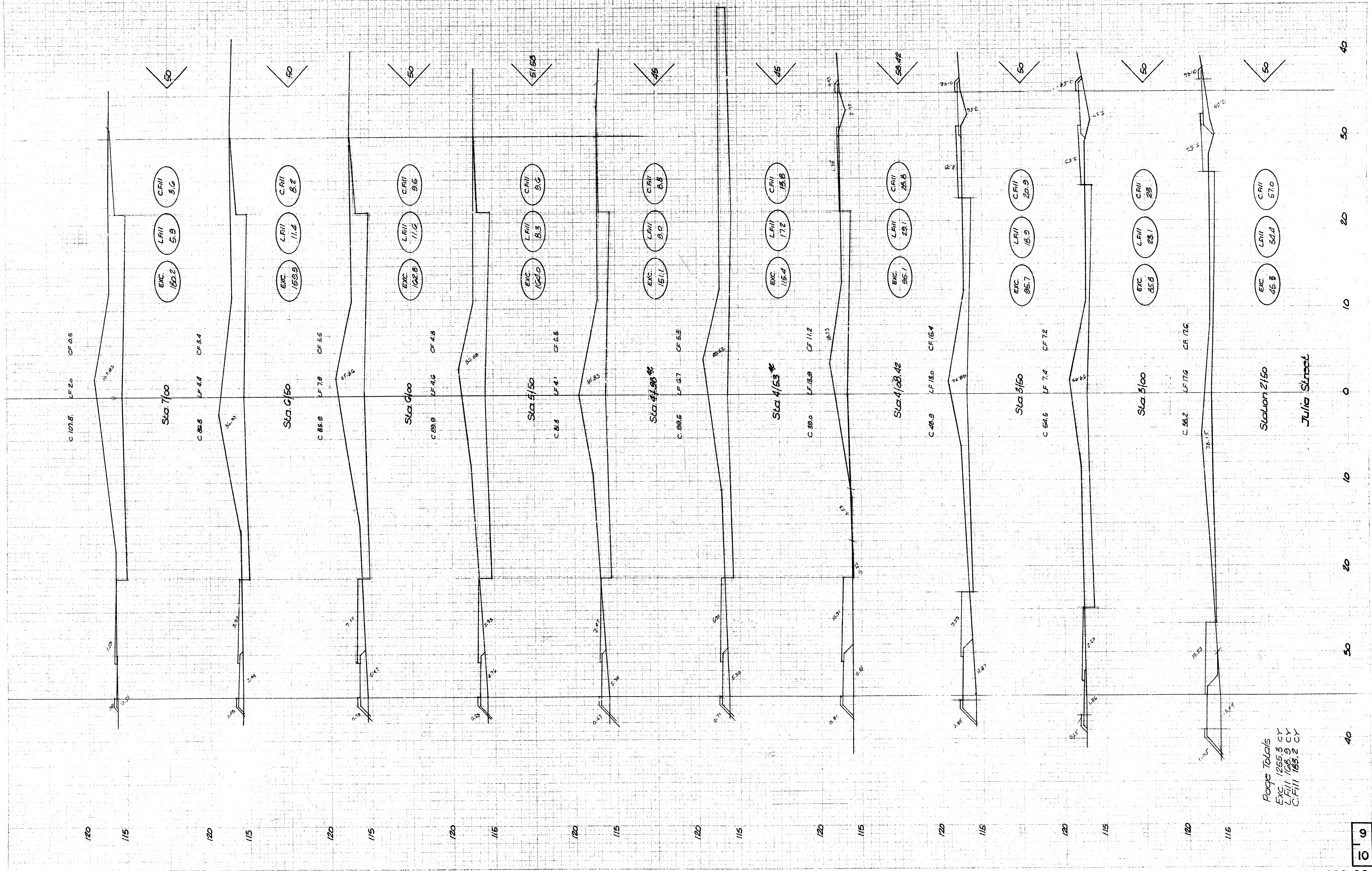
EXC. 72.8  
L.Fill 6.2  
C.Fill 1.8

20.8

Page Totals  
Exc. 125.5 cy  
L.Fill 150.1  
C.Fill 140.8

Project Totals  
Exc. 3211.7 cy  
L.Fill 375.4 cy  
C.Fill 341.2 cy

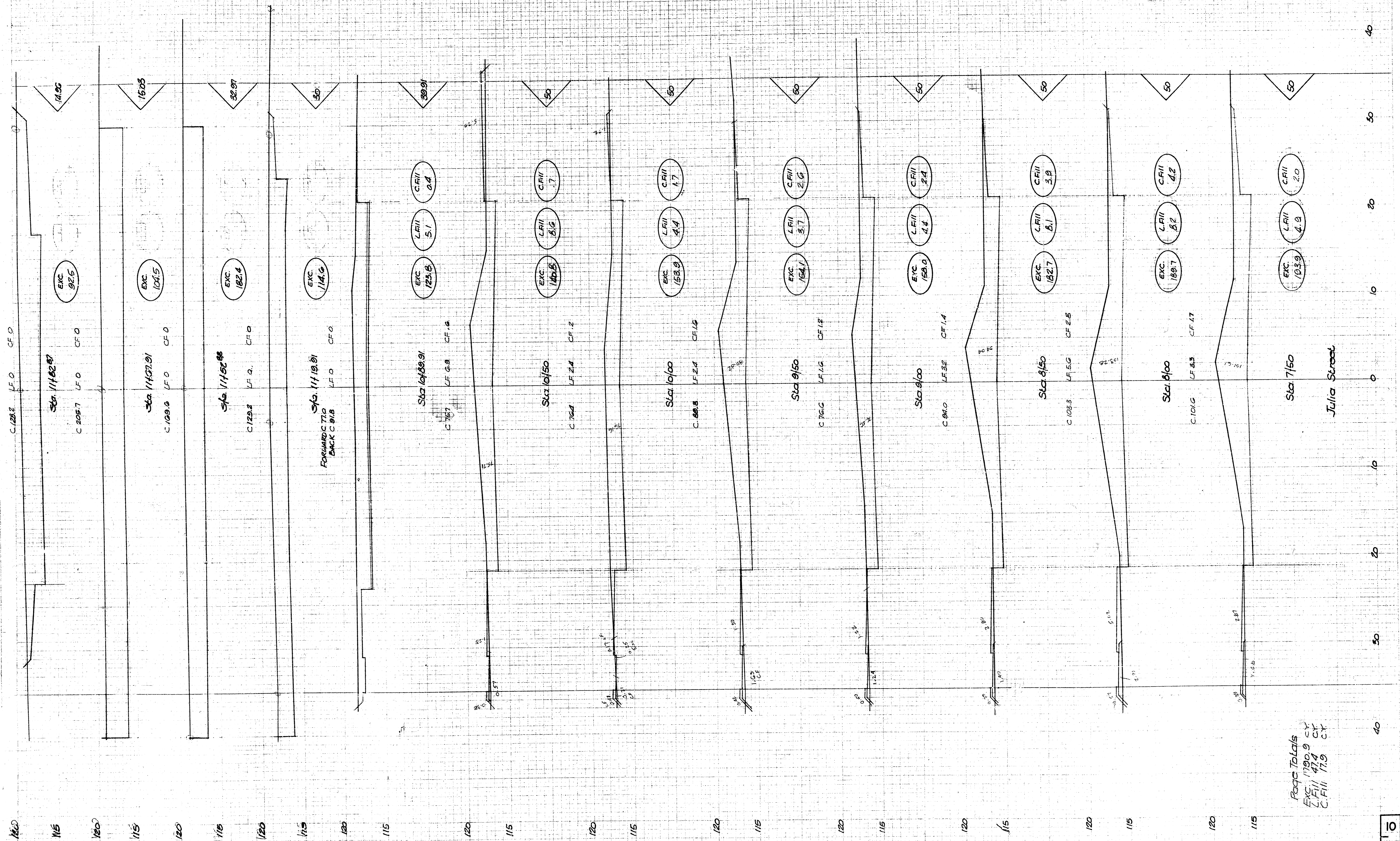
Earthwork Cross Sections  
Julia Street



Page Totals  
Exc. 1255.3 CY  
L.Fill 108.9 CY  
R.Fill 165.2 CY

FILMED FROM THE BEST AVAILABLE COPY

Earthwork Cross Sections  
Julia Street



Page Totals  
EXC. 1790.9 CY  
L.Fill 474 CY  
C.Fill 173 CY

FILMED FROM THE BEST AVAILABLE COPY