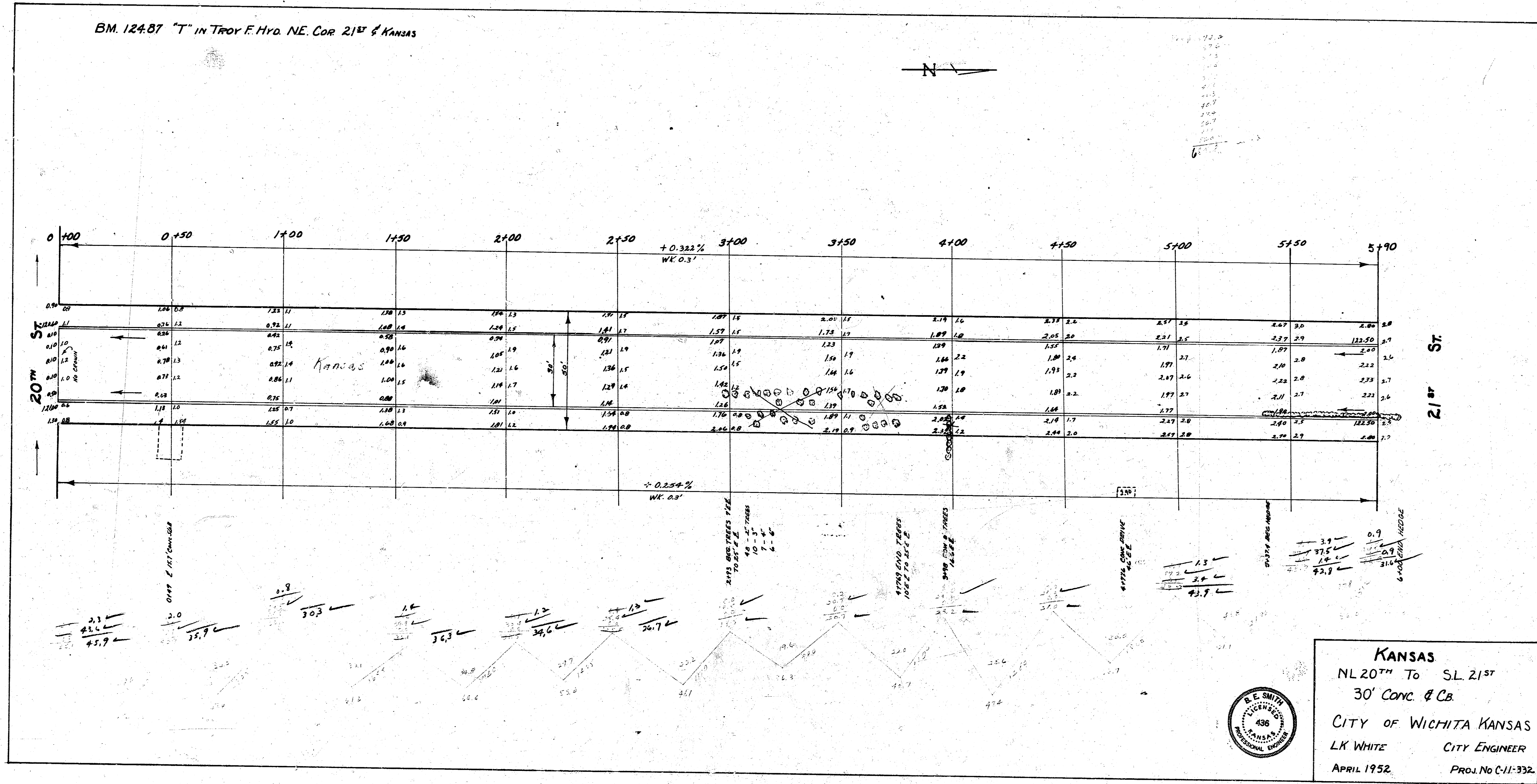
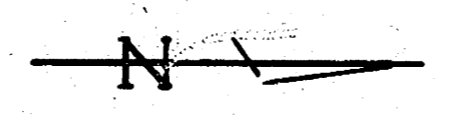


K-6

BM. 12487 "T" IN TROY F. HYD. NE. COR. 21ST & KANSAS



KANSAS
 NL 20TH TO SL 21ST
 30' CONC. & CB.
 CITY OF WICHITA KANSAS
 LK WHITE CITY ENGINEER
 APRIL 1952 PROJ. No C-11-332

1 5 1 14