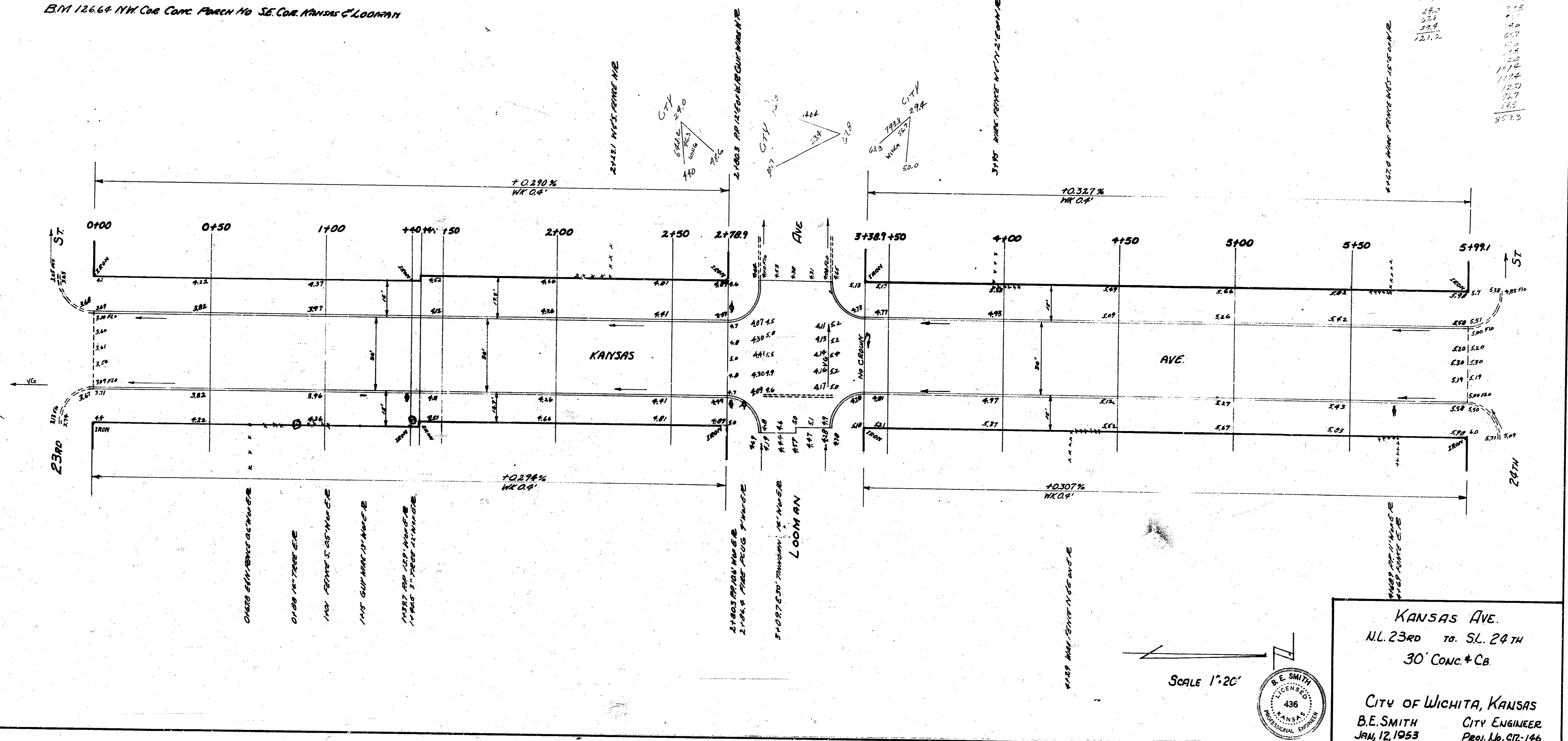


B/M 126.64' 11% Conc. Paved Ho. SE. Cor. Kansas & Looman



CITY	12.0	12.5	13.0	13.5	14.0	14.5	15.0	15.5	16.0	16.5	17.0	17.5	18.0	18.5	19.0	19.5	20.0	20.5	21.0	21.5	22.0	22.5	23.0	23.5	24.0	24.5	25.0	25.5	26.0	26.5	27.0	27.5	28.0	28.5	29.0	29.5	30.0
12.0	12.5	13.0	13.5	14.0	14.5	15.0	15.5	16.0	16.5	17.0	17.5	18.0	18.5	19.0	19.5	20.0	20.5	21.0	21.5	22.0	22.5	23.0	23.5	24.0	24.5	25.0	25.5	26.0	26.5	27.0	27.5	28.0	28.5	29.0	29.5	30.0	

Survey Map No. 17
Plan No. 100
City of Wichita
Kansas

SCALE 1"=20'

KANSAS AVE.
N.L. 23RD TO S.L. 24TH
30' CONC. + CB

CITY OF WICHITA, KANSAS
B.E. SMITH CITY ENGINEER
JAN. 12, 1953 Proj. No. C72-146