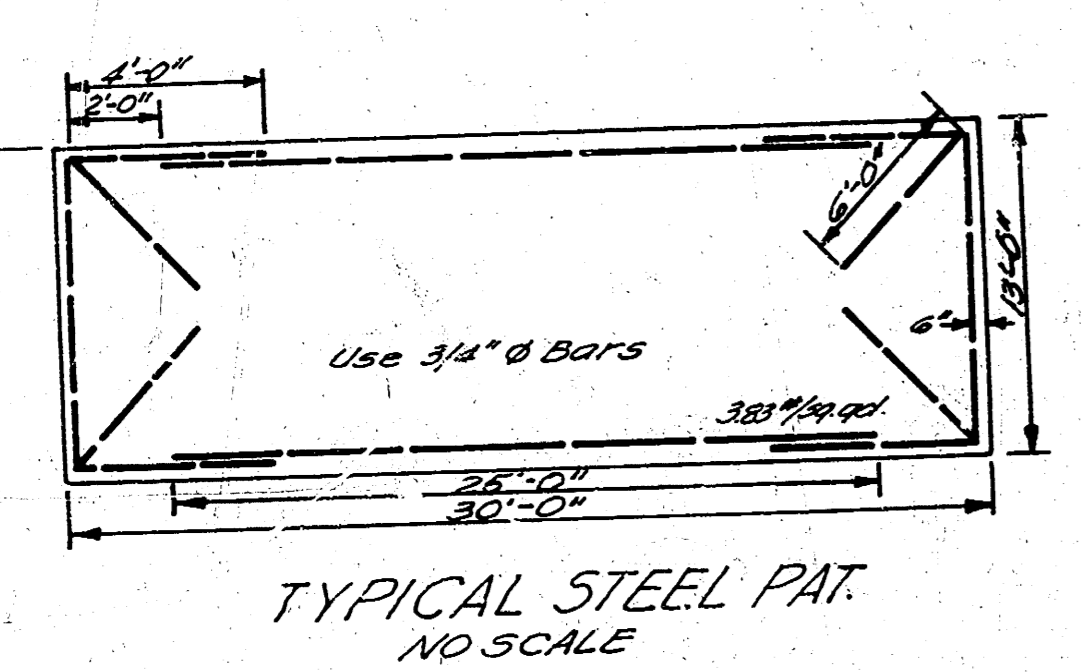
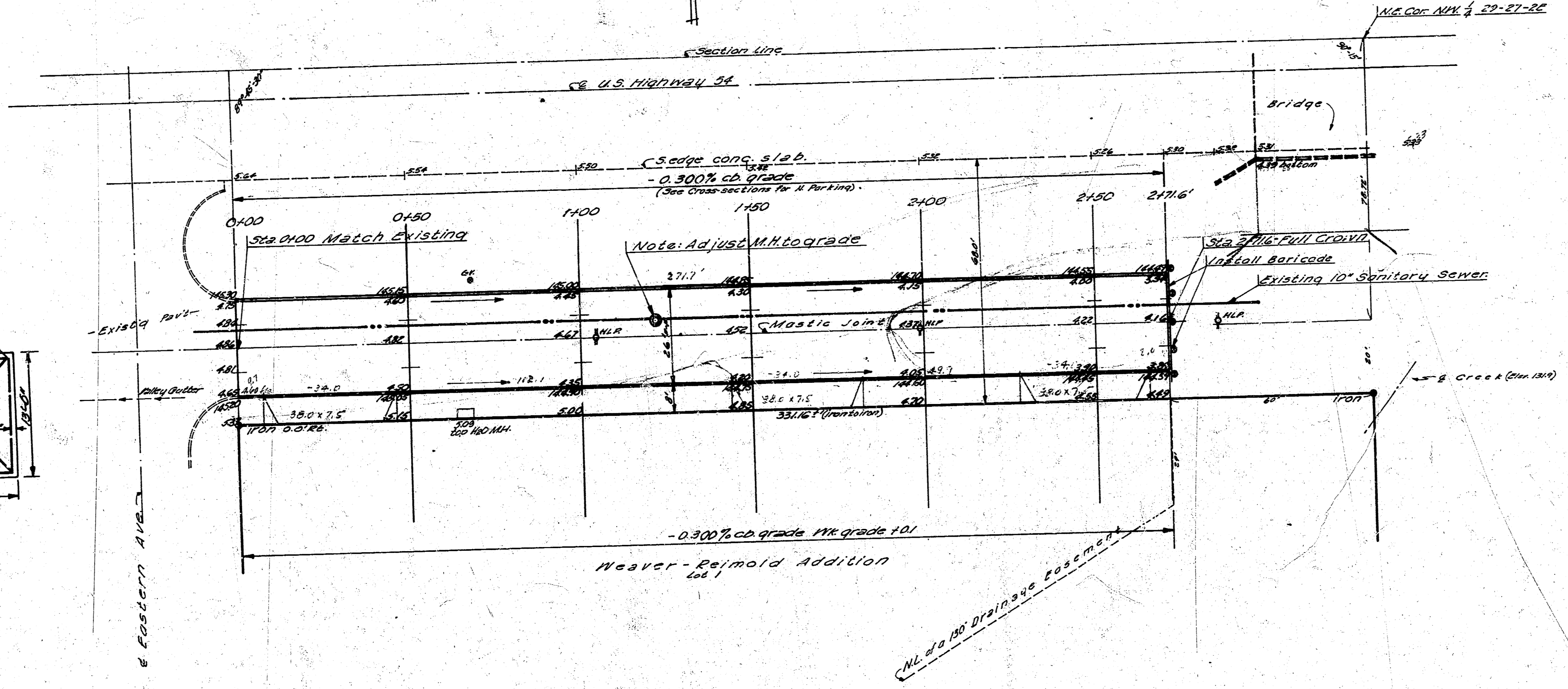


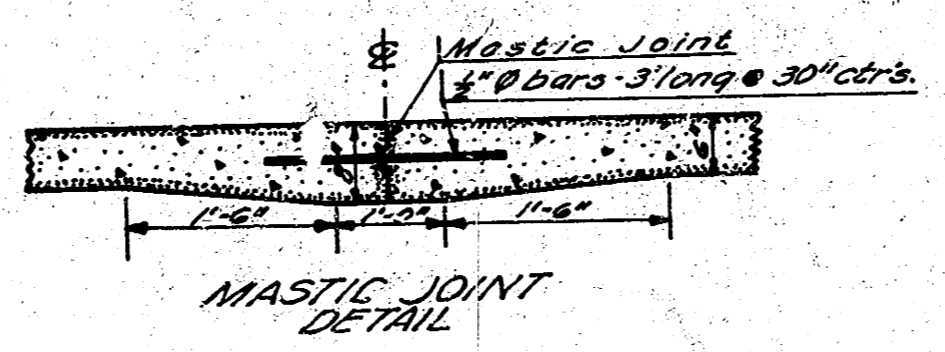
28.11.11-Top S. Rail W. Hubquard bridge on Eastern approx. 300' So. of Kellogg.  
 Base Line: South Property Line Kellogg Dr.

Scale: 1" = 20'



**NOTE TO CONTRACTOR**  
 This project will be constructed under the supervision of the CITY ENGINEER and conforming to the SPECIFICATIONS of the CITY OF WICHITA. The CONTRACTOR will reimburse the City of Wichita for all cost of Engineering, Plans, and Inspection.

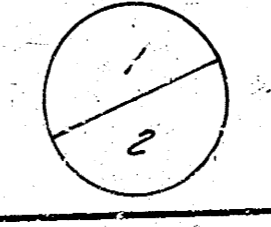
LIST OF QUANTITIES		
815.1	880	50 YDS. 6" CONCRETE PAVEMENT
541.4	3440	40 LBS. REINFORCING INT. CURB
321.5	3340	40 LBS. REINFORCING STEEL
136.0	10670	CU YDS. COMPACTED FILL
271.7	2716	LINE FT. MASTIC JOINT
42	42	CU YDS. CONCRETE (Mastic Joint)
42	42	CU YDS. SPECTAL EXCAVATION (Mastic Jt.)
855.0	54.702	sq. Yds. 6" Drive



Earthwork Tabulation

Compacted Fill	
Property	City
1067.0	0.0
+10% 136.7	
1503.7	CU YDS.

**KELLOGG DRIVE**  
 (South Side)  
 EL. Eastern Ave. to 2716' East  
 26.0' CONCRETE + CB.  
 City of Wichita, Kansas  
 B.E. Smith City Engineer  
 Date: Oct. 29 Private Job



Survey Young BK 28-11-11  
 Plan 5001  
 Scale 1" = 20'  
 Checked