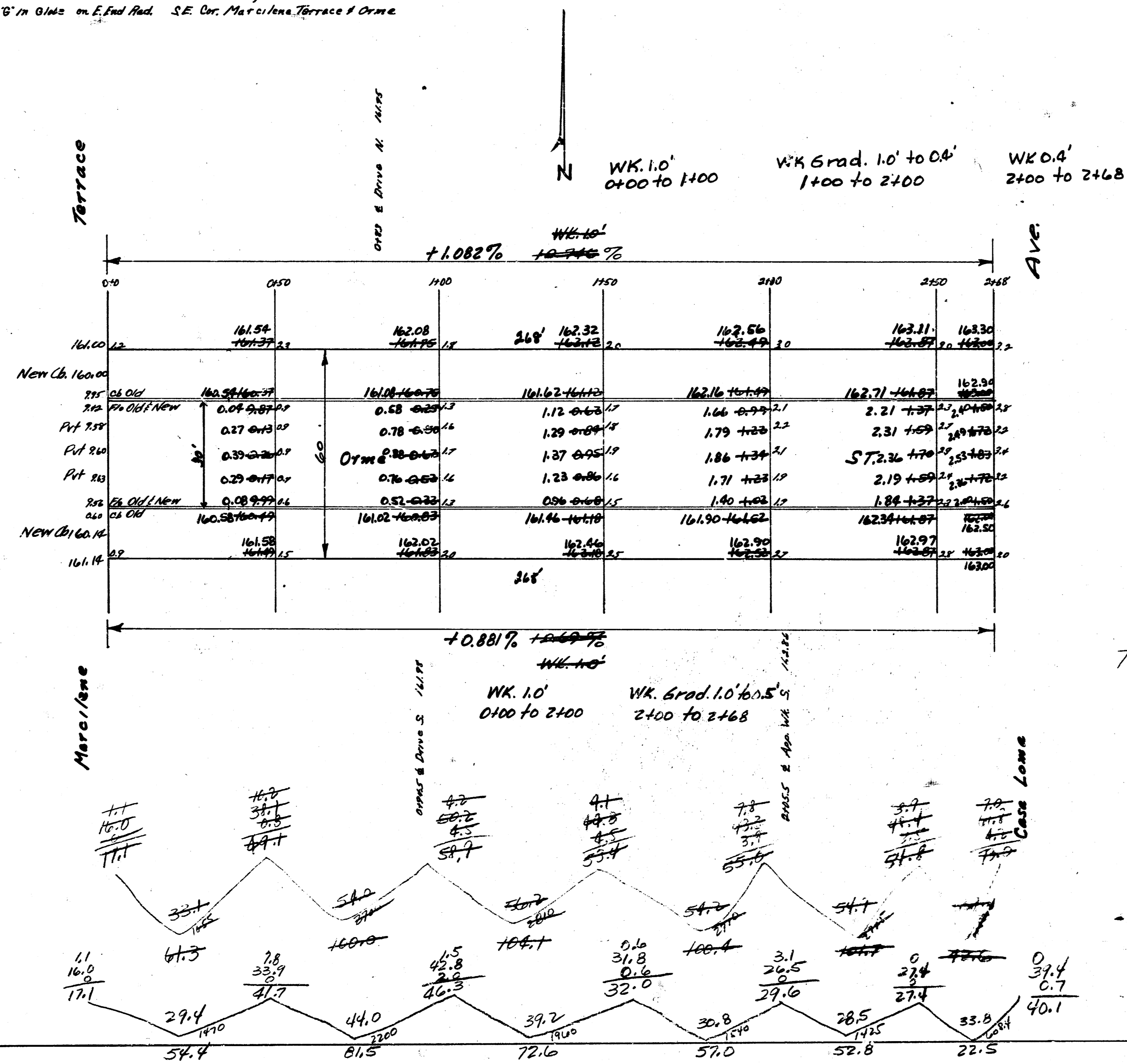


B.M. 157.17 6" in Glass on Rod. N.W. Cor. Beverly Dr. & Orme  
 B.M. 160.11 6" in Glass on E. End Rod. S.E. Cor. Marcilona Terrace & Orme



Prop  
 54.4  
 81.5  
 72.6  
 57.0  
 52.8  
 22.5  
 ---  
 340.8  
 +10.1  
 total 379.9 cu. Yds.

Prop.  
 61.8  
 100.0  
 151.1  
 112.4  
 48.6  
 ---  
 510.1  
 +10.1  
 Total 520.1 cu. Yds.

Orme St.  
 E.L. Marcilona Terrace - W.L. Casa Loma  
 30' Conc. Cb.  
 City of Wichita, Kansas  
 L.H. White City Engineer  
 May 1948 Project C18-72