

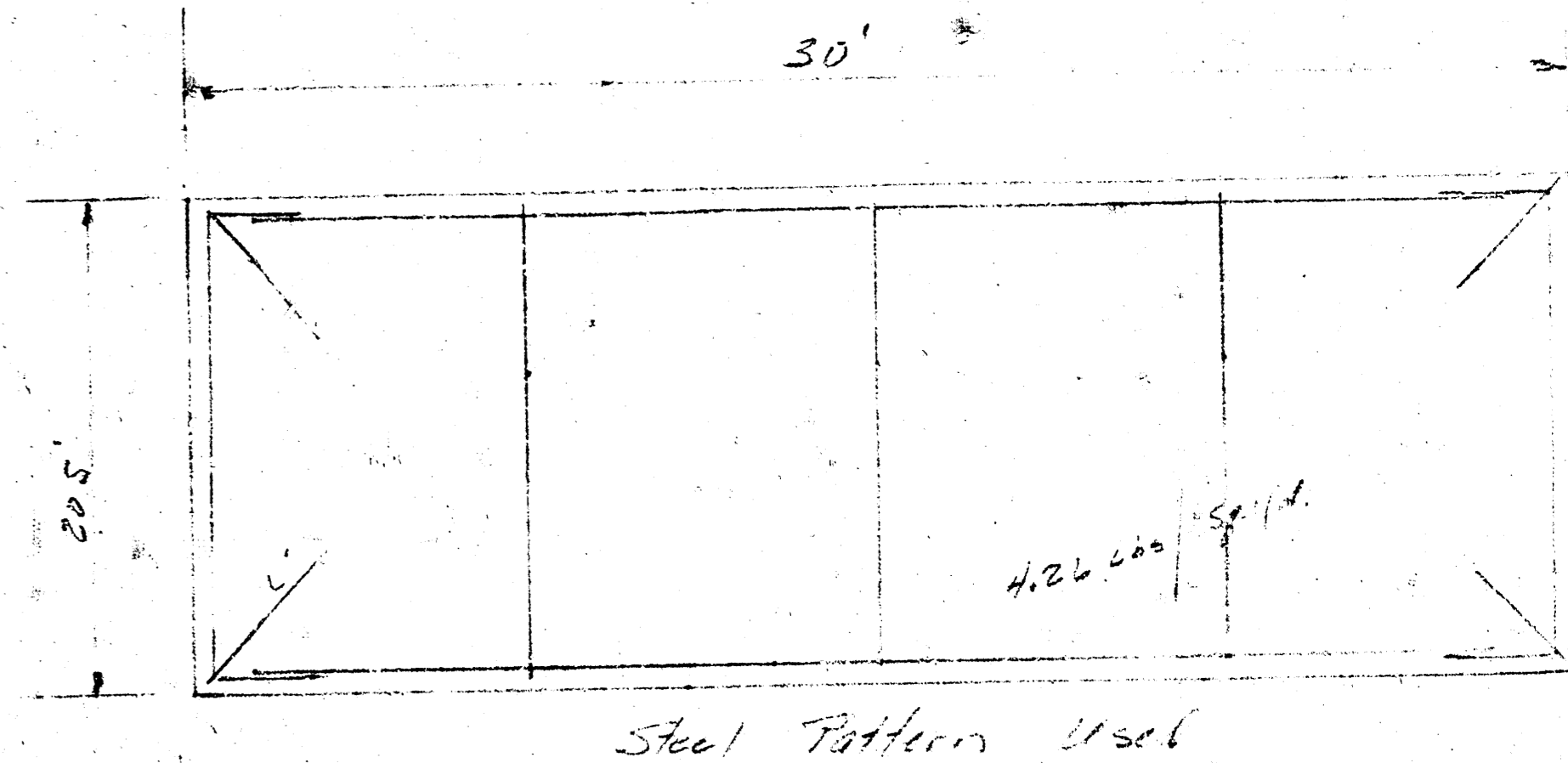
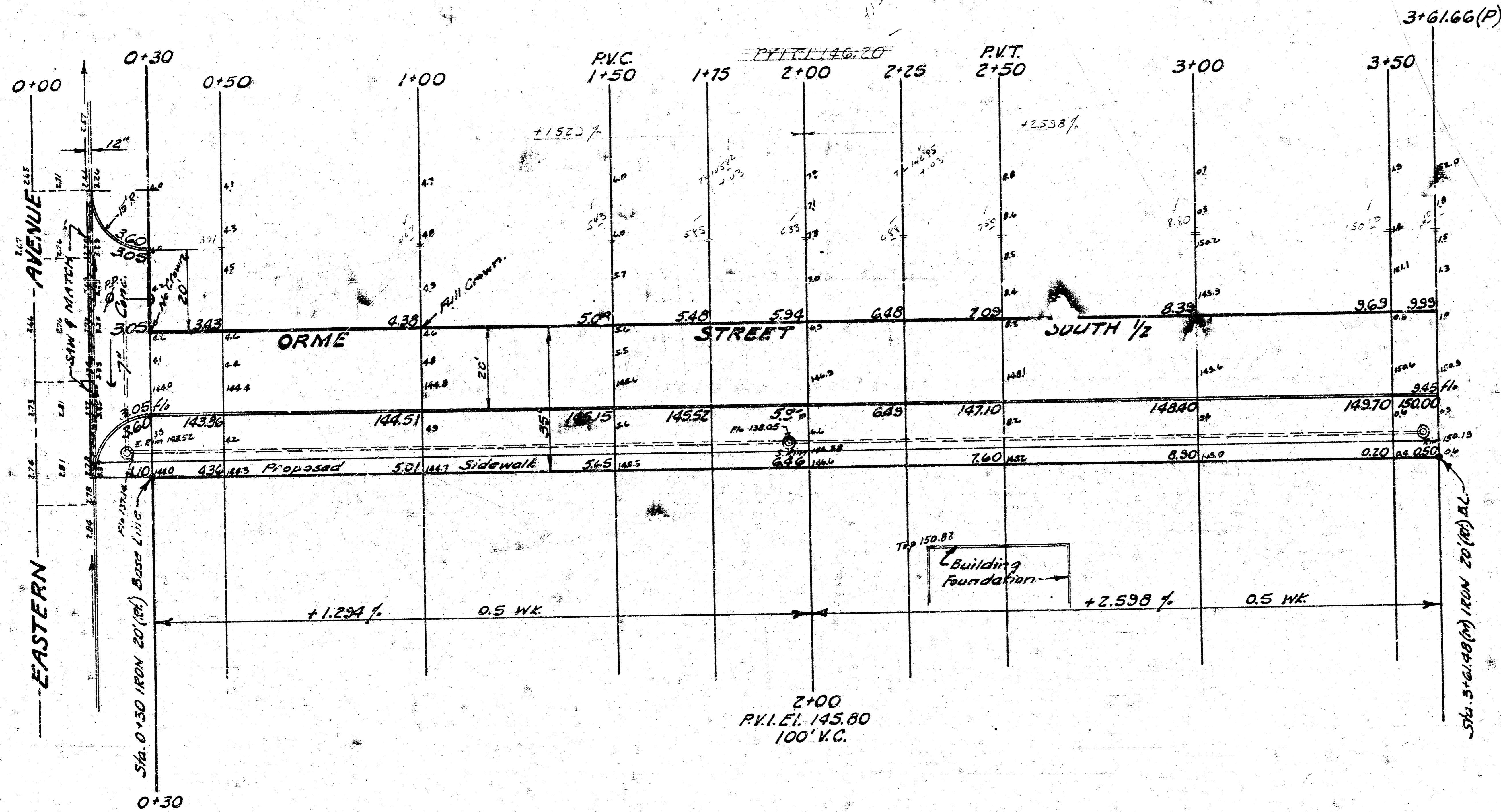
B.M. 148.93 "□" on curb S.L.  
Gilbert on W. curb Eastern.

B.M. 142.78 "□" cut top W. curb  
Eastern @ & Orme Street, E.

**NOTE:**

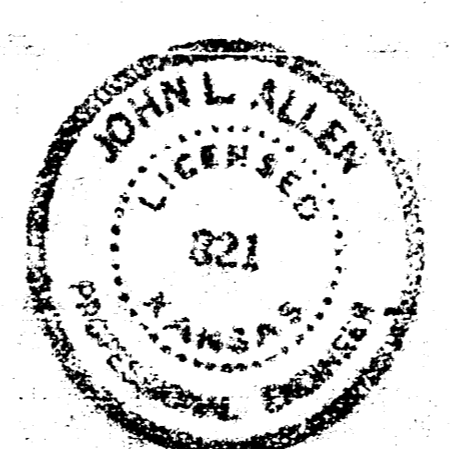
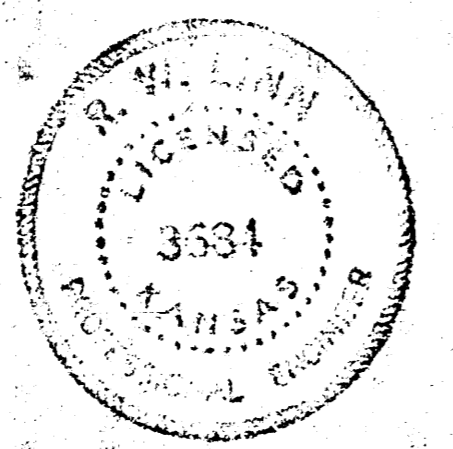
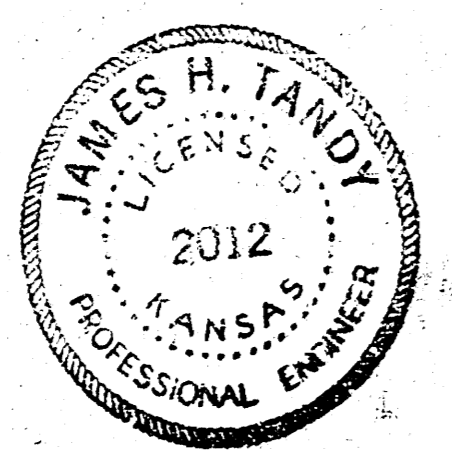
Contractor to clear right-of-way and grade  
parking for proposed sidewalk. Sidewalk to  
be constructed by others.

Scale: 1" = 20'



50  
24.5  
27.5  
60.0  
1.1

EXCAVATION	
PROPERTY	CITY
495 Cu. Yds.	39 Cu. Yds.
+10% 49 "	4 "
<b>Totals 544 Cu. Yds.</b>	<b>42 Cu. Yds.</b>



Final  
June 24, 1968

**ORME STREET S. 1/2**  
E.L. EASTERN AVE. to  
E.L. MANSON-CUMMINGS ADD.  
20'-7" Conc. & Int. Curb  
B.E. SMITH CITY ENGINEER  
CITY OF WICHITA, KANSAS  
Date: Oct. 1968  
Project No. C18-1

1/2

12. Engr  
11. Ind. E.