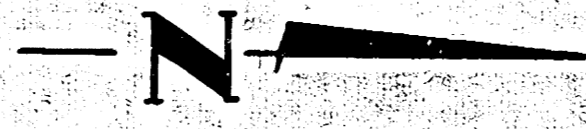


B.M. 10019 1/4 Spike F. P. Pole 197' S. of Iron N.E. Cor. Handley: Maxwell

Base Line & Osage

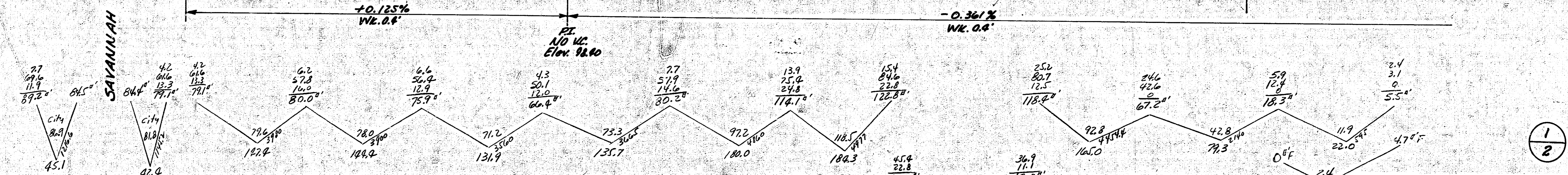
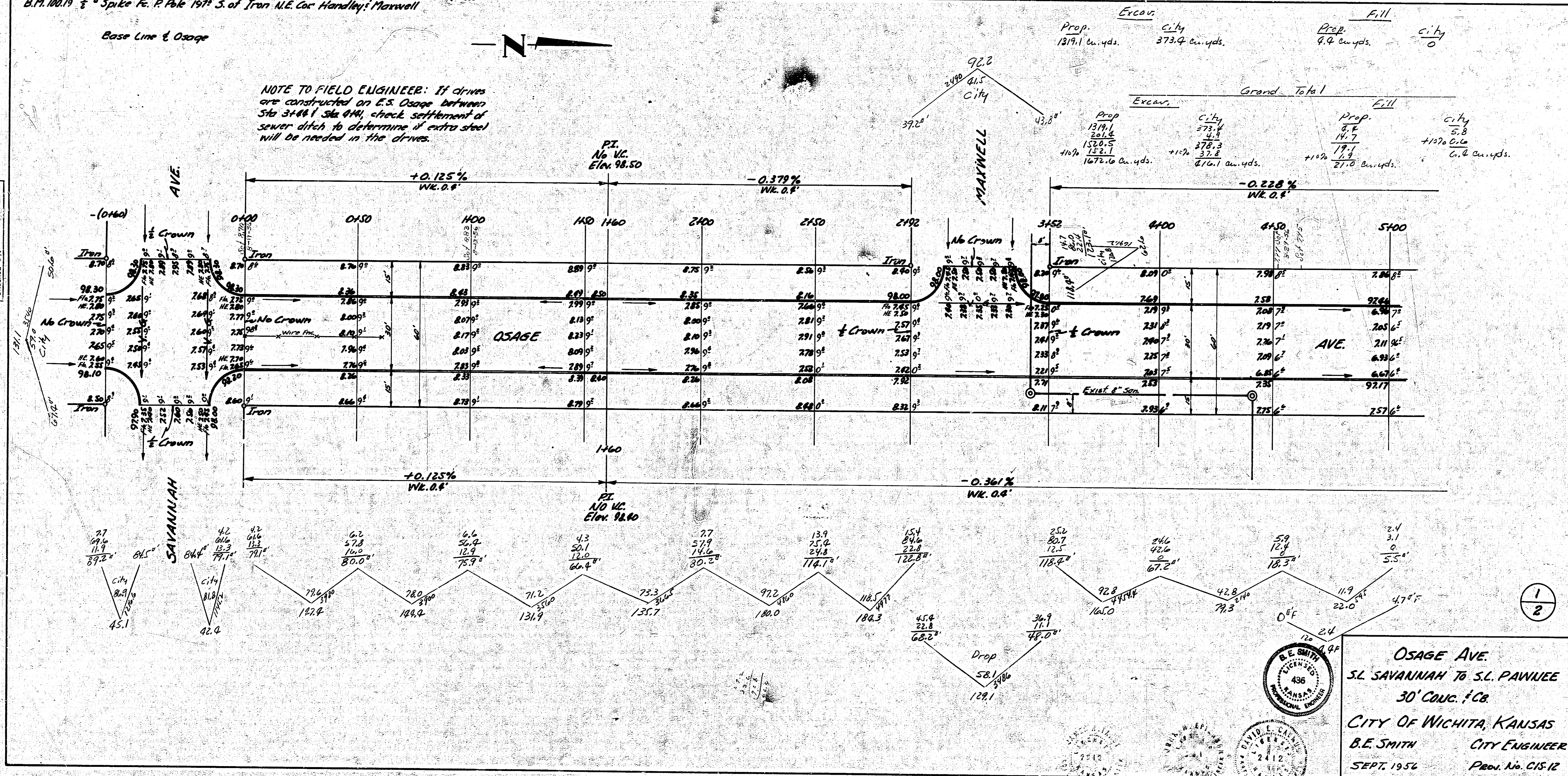


NOTE TO FIELD ENGINEER: If drives are constructed on E.S. Osage between Sta 3441.5 & 441, check settlement of sewer ditch to determine if extra steel will be needed in the drives.

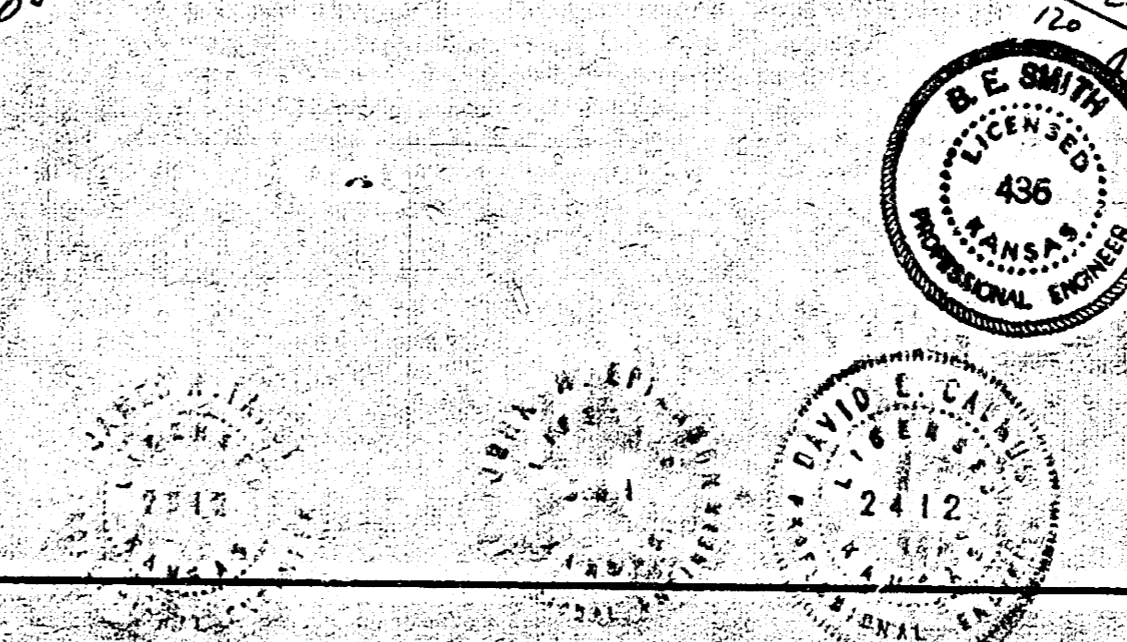
| Excav | | Fill | |
|-----------------|----------------|--------------|------|
| Prop. | City | Prop. | City |
| 1379.1 cu. yds. | 373.4 cu. yds. | 9.4 cu. yds. | 0 |

| Grand Total | | | |
|-----------------|-------|-------|------|
| Excav. | | Fill | |
| Prop. | City | Prop. | City |
| 1379.1 | 373.4 | 9.4 | 0 |
| 1520.5 | 46.3 | 14.7 | 5.8 |
| 1679.6 cu. yds. | 419.7 | 24.1 | 5.8 |
| | 466.0 | | 6.2 |

Survey Sheet Bk 3 27
 Plan C.C.C.
 Checked J.T.



OSAGE AVE.
 S.L. SAVANNAH TO S.L. PAWNEE
 30' CONC. P.C.
CITY OF WICHITA, KANSAS
 B.E. SMITH CITY ENGINEER
 SEPT. 1954 Proj. No. C15-12



1/2

