

# PAVEMENT TURNAROUND ON OSAGE AVENUE IN VAN-McNEW ADDITION

PROJECT NO. 472-76-245-80856-000-000-001

INDEX NO. 760454

### GENERAL NOTES

The City of Wichita's Sewer Maintenance Division of the Department of Water and Water Pollution Control has televised sewers within the limits of the project and have found no defects requiring repair. The Division shall be notified and afforded the opportunity to reteleviser sewer lines after subgrade work has been completed and prior to pavement construction to determine if such sewer lines have been damaged by the Contractor's operations. Damaged sewer lines will be repaired by the Contractor, as directed by the Engineer, at the Contractor's expense. Television logs are available for inspection by the Contractor during normal office hours at the Sewer Maintenance Division's office at City Hall.

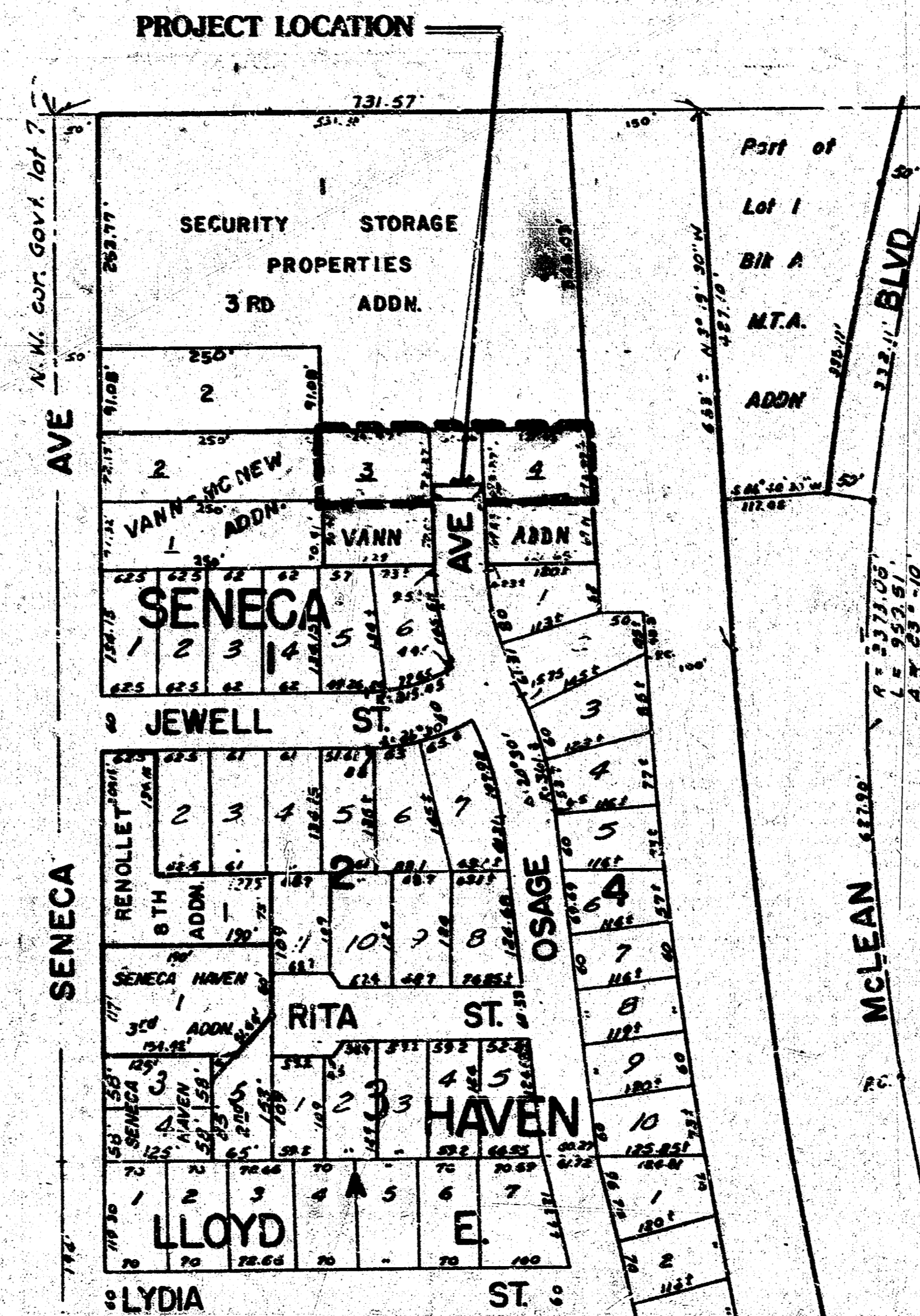
Rubble from the removal of miscellaneous structures and excess excavation which is to be wasted shall be disposed of on sites to be provided by the Contractor. These sites shall be approved by the Engineer as to suitability, appearance and site location. Locations that, in the opinion of the Engineer, will leave an unsightly appearance will not be approved.

Utility service lines, poles, valve boxes, meters, and etcetera are to be adjusted as necessary by others prior to construction unless the plans specifically call for their adjustment by the contractor or unless the plans specifically identify a utility to be adjusted by its owner during construction. Existing utilities and their location, as shown on the plans, represent the best information obtainable for design. The contractor will be required to work around existing utilities within the right-of-way which do not conflict with proposed construction.

The contractor shall be responsible for preserving property irons. The contractor will be required to re-establish any property irons which are damaged or destroyed by construction operations. Such irons shall be re-established by a licensed land surveyor or a licensed professional engineer in accordance with state laws.

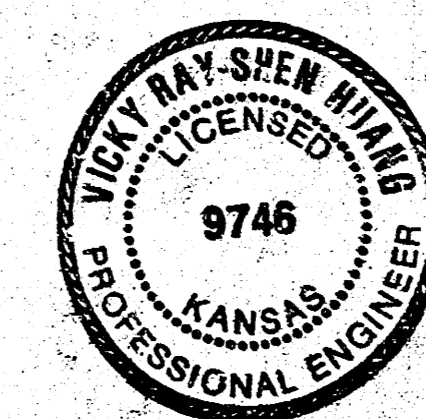
The Contractor shall give all property owners and/or tenants of developed property abutting the project limits a minimum of ten (10) days advance notice prior to start of construction.

NO DRIVEWAYS TO BE CONSTRUCTED ON THIS PROJECT



### INDEX TO DRAWINGS

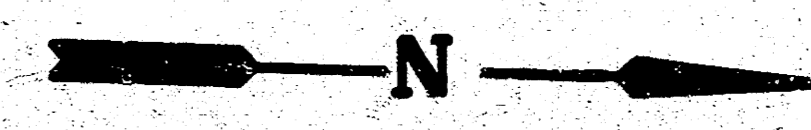
SHEET NO.	DESCRIPTION
1	TITLE SHEET
2	PAVING PLAN & MISCELLANEOUS DETAILS
3	EARTHWORK SECTIONS



CITY OF WICHITA, KANSAS

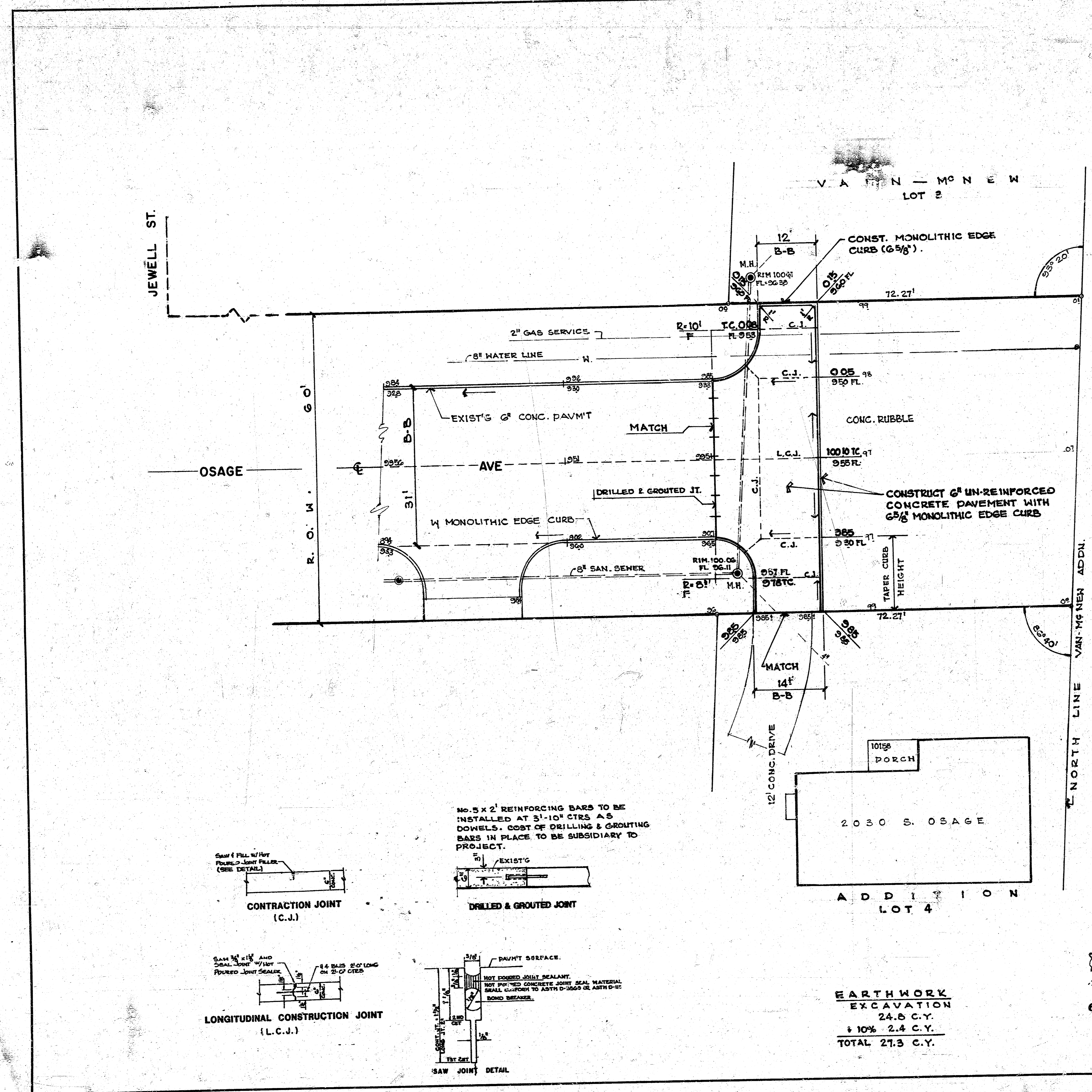
M.E. LINDEBAK - CITY ENGINEER

IMPROVEMENT DISTRICT BOUNDARY - - - - -

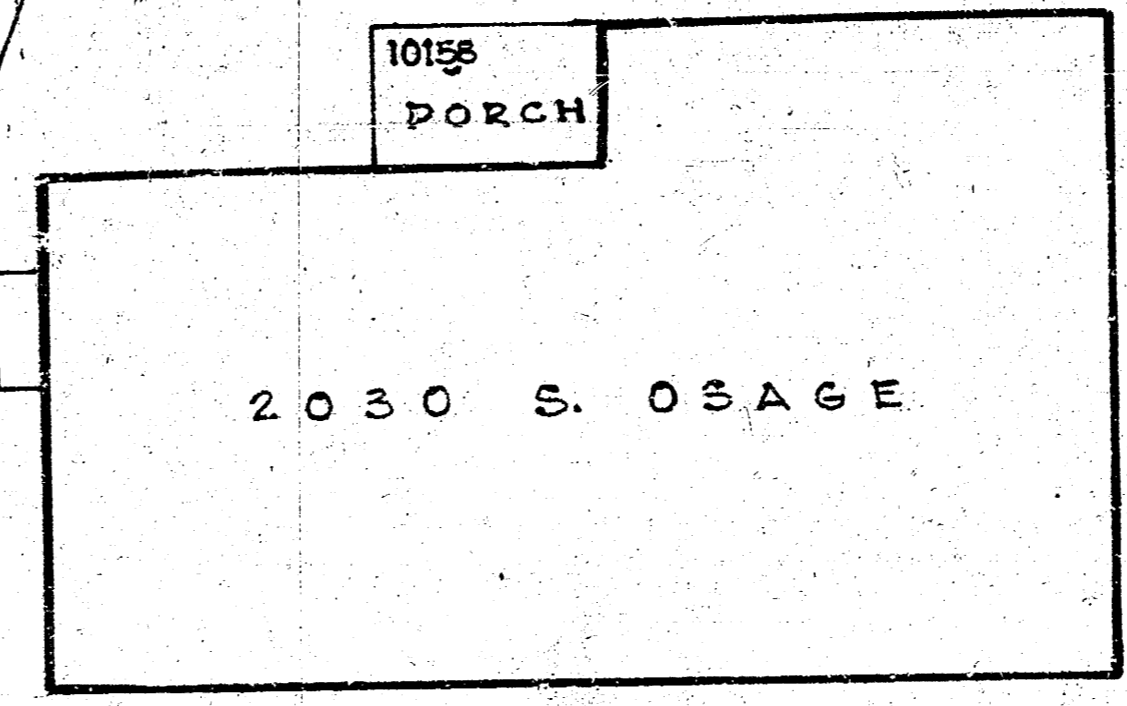
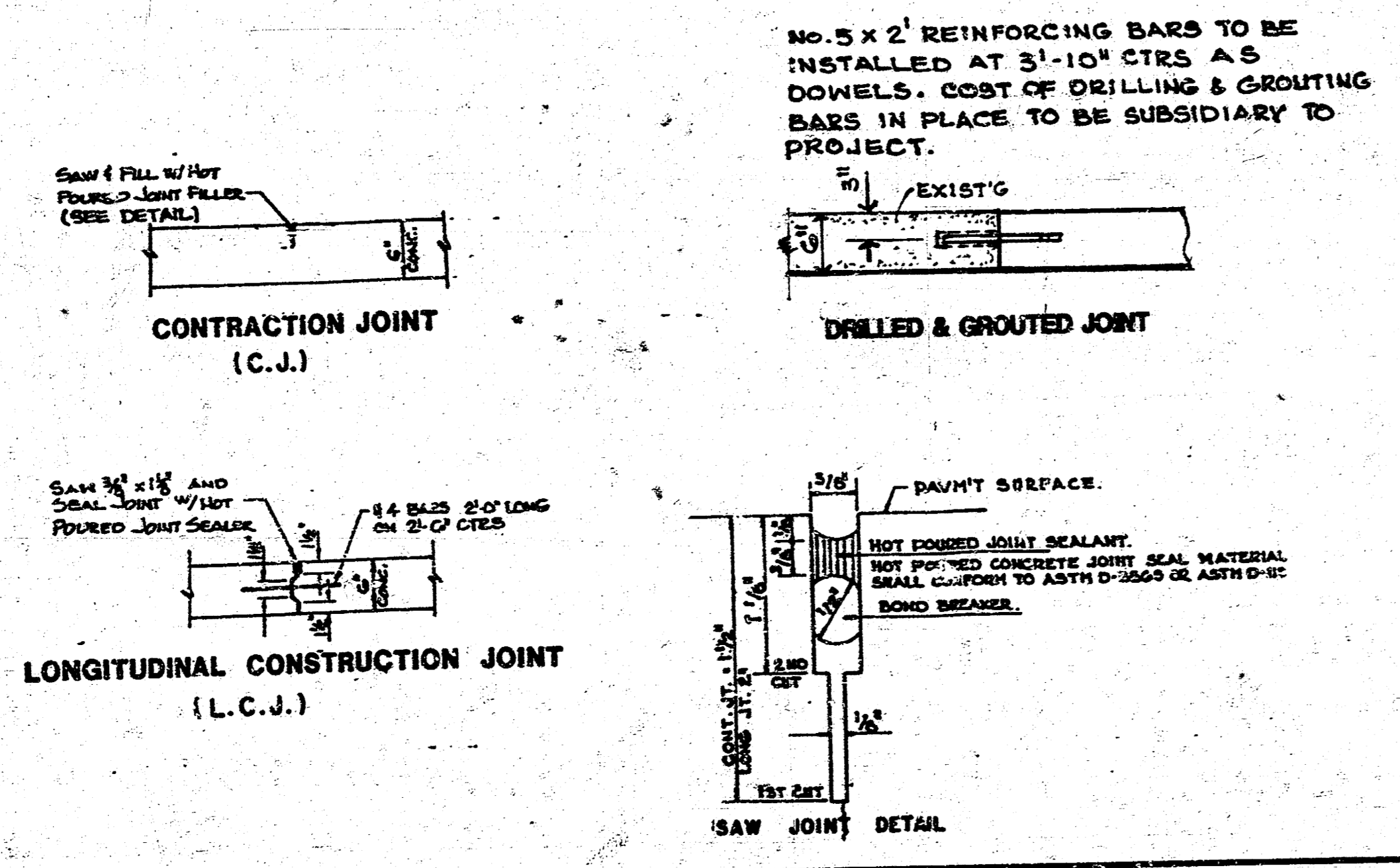


SCALE 1"=10'

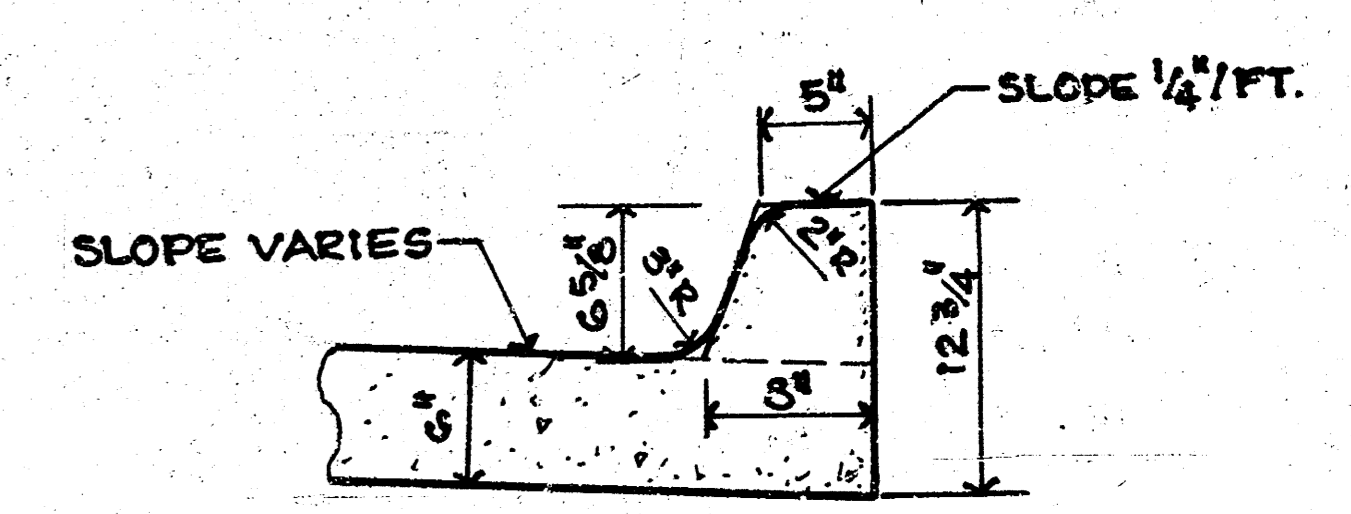
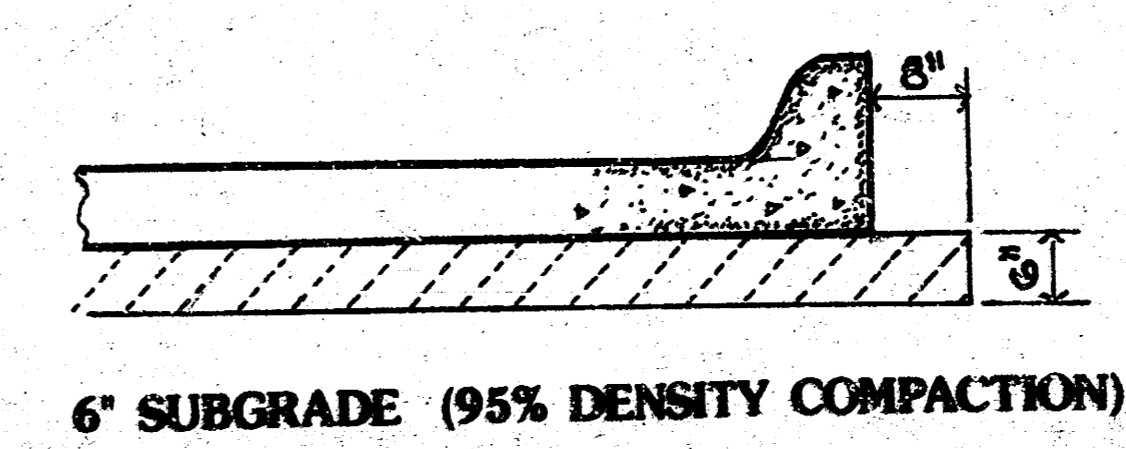
B.M. = 99.66 "I" TOP CURB, NORTH  
RET. N.W. COR. JEWELL & OSAGE.



NOTE: EXCAVATED MATERIAL SUITABLE TO SUPPORT NORMAL VEGETATION GROWTH IS TO BE USED FOR BACKFILL IN PARKING AREA.



EARTHWORK  
EXCAVATION  
24.6 C.Y.  
± 10% 2.4 C.Y.  
TOTAL 27.3 C.Y.



MONOLITHIC EDGE CURB - FULL HEIGHT

PROJECT DESCRIPTION
PAVEMENT TURNAROUND ON OSAGE AVE IN VAN-MCNEW ADDITION
PROJECT NUMBER
PROJ. NO. 472-76-245-80056-000-001

