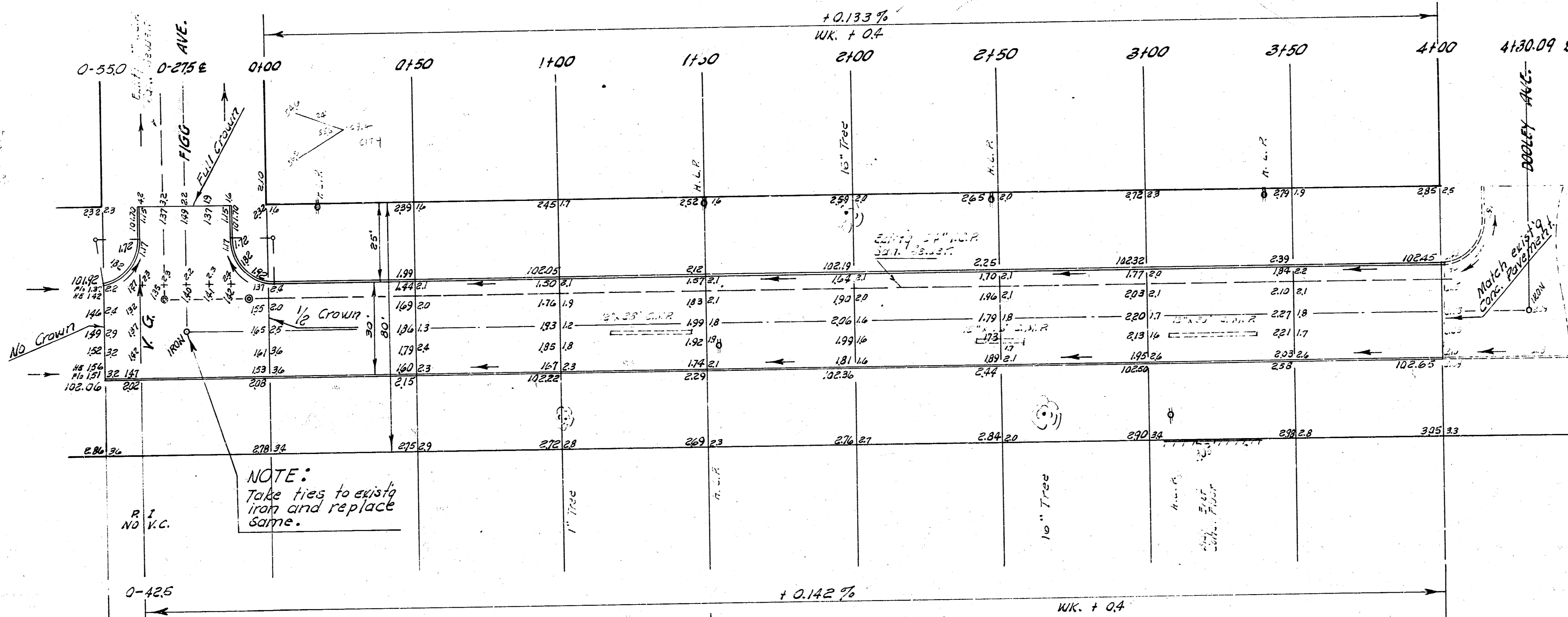
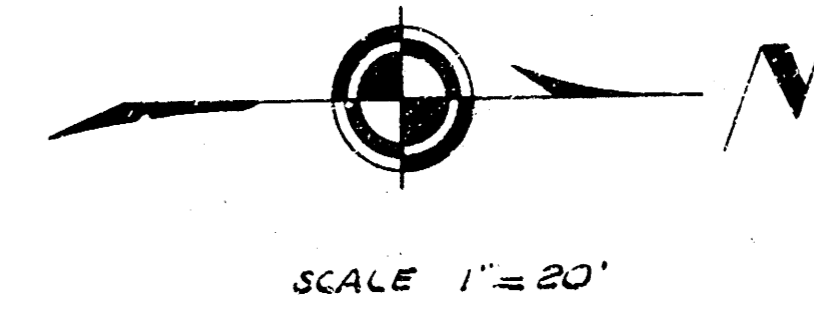


B. M. 104.50 SW cor. conc. Porch to NE cor. Figg & Handley.
 Baseline and Stationing on E Osage Ave.
 B. M. 103.23 Spike ES Spike ES HLP NW Dooley & Osage.

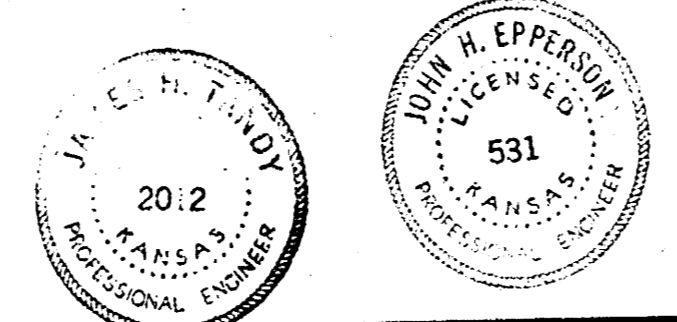
NOTE TO FIELD ENGINEER & CONTRACTOR:
 All entrance pipes are to be disposed of
 in accordance with instructions from
 the City dirt checker.



Survey J. Young, B.S. 1957
 Plotted J. W. W.
 Checked C. W. W.
 Date 10/1/59

EARTH WORK	
EXCAVATION	
CITY	PROP.
97.8	4680
9.8	468

107.6 Cu. Yds. 514.8 Cu. Yds.



OSAGE AVE.
 SL FIGG TO SL DOOLEY
 30' Conc. & Cb.
 CITY OF WICHITA KANSAS
 B. E. SMITH CITY ENGINEER
 Sept. 1959 PROJ. NO. C19-129