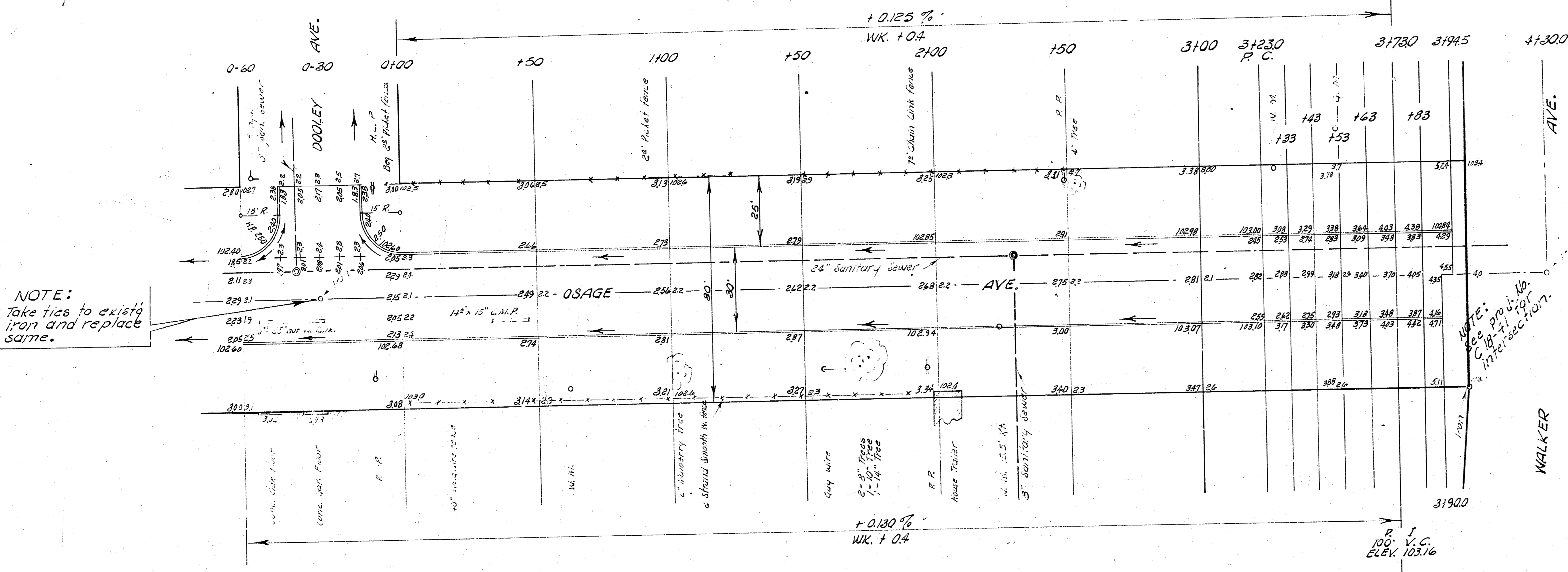
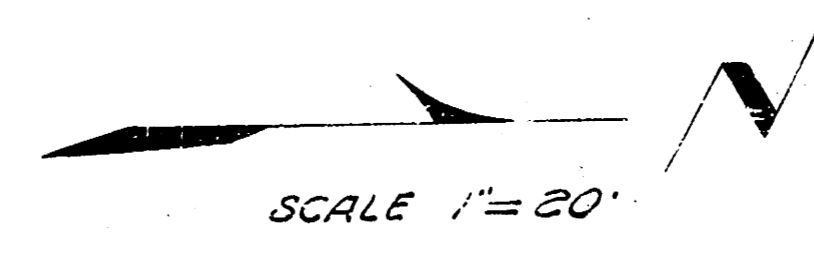


B.M. 10262 SE cor. conc. wk. S.S. Bldg. NE cor. Dooley & Walnut.
 B.M. 10323 60" spk. ES R.P. NW Dooley & Osage.
 B.M. 10466 R.R. Spk. ES R.P. SW Osage & Walker.
 Stationing from south to north along Osage Ave.

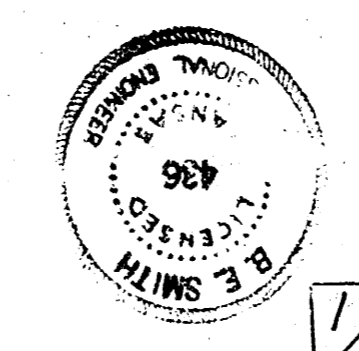


NOTE:
 Take ties to existing
 iron and replace
 same.

NOTE:
 See Proj. No. 10.
 for
 intersection.

EARTH WORK		CITY	
Excavation	Fill compaction	Excavation	Fill compaction
46.2	111.3	4.6	11.1
508	1224 cu. Yds.	855	855 cu. Yds.

OSAGE AVE.
 SL DOOLEY TO SL WALKER
 30' CONC. & CB
 CITY OF WICHITA, KANSAS
 B. E. SMITH CITY ENGINEER
 MARCH, 1959, PROJ. NO. C18-165



1/2