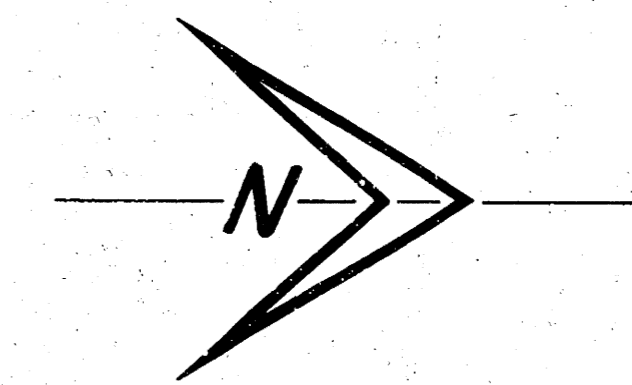


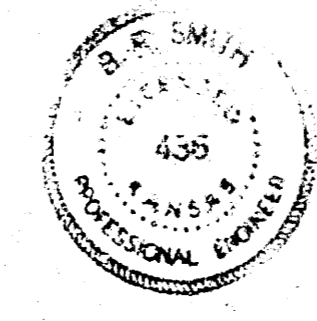
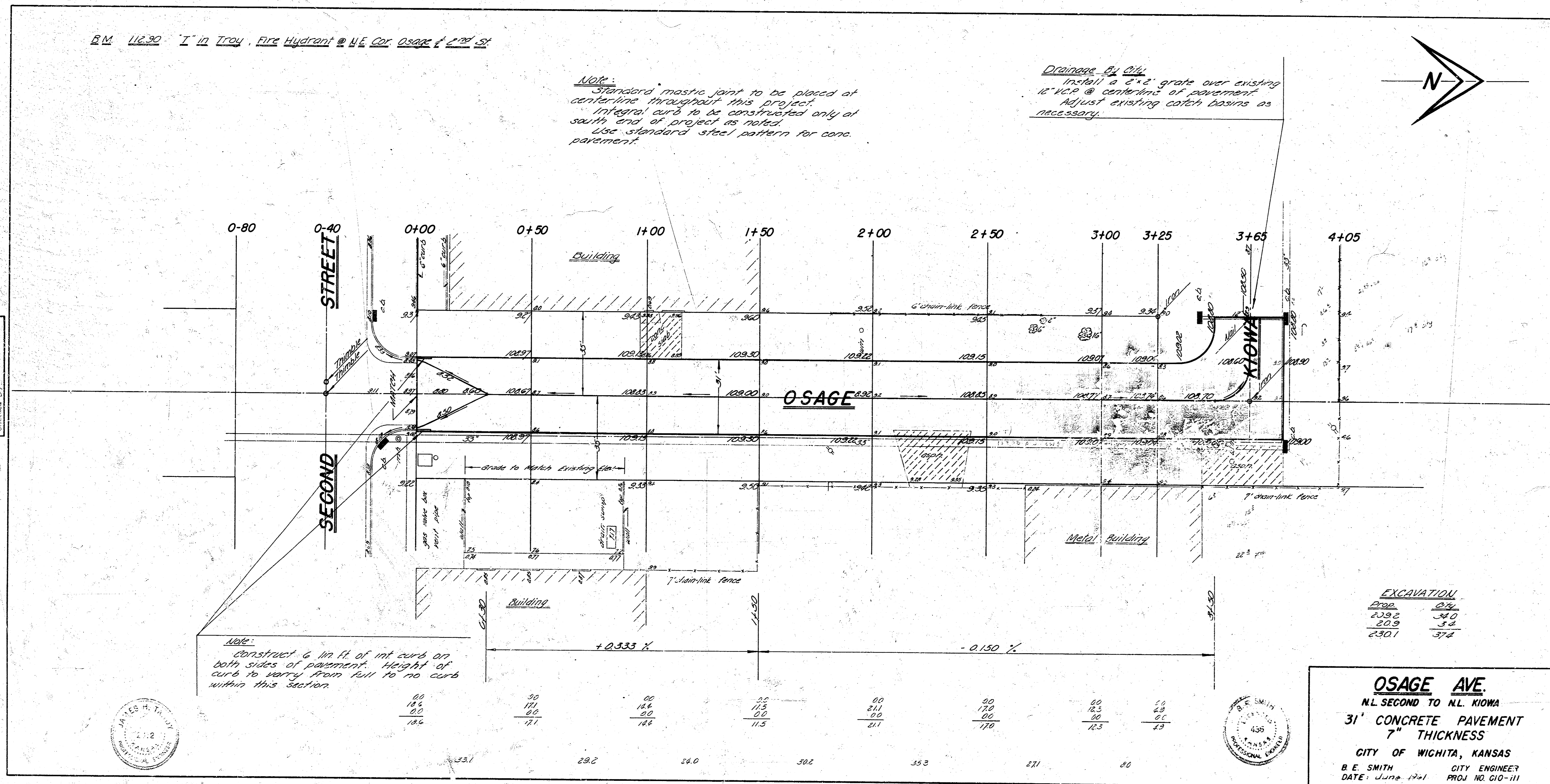
B.M. 11230 1" in Troy Fire Hydrant @ NE Cor. Osage & 2nd St

Note:
 Standard mastic joint to be placed at centerline throughout this project.
 Integral curb to be constructed only at south end of project as noted.
 Use standard steel pattern for conc. pavement.

Drainage by City:
 Install a 3' x 2' grate over existing 18" x 18" at centerline of pavement.
 Adjust existing catch basins as necessary.



Approved by Dept. of Public Works
 City Engineer
 6/2/01
 Osage Ave. 37'



OSAGE AVE.
 N.L. SECOND TO N.L. KIOWA
 31' CONCRETE PAVEMENT
 7" THICKNESS
 CITY OF WICHITA, KANSAS
 B. E. SMITH CITY ENGINEER
 DATE: June, 1901 PROJ. NO. 610-111