

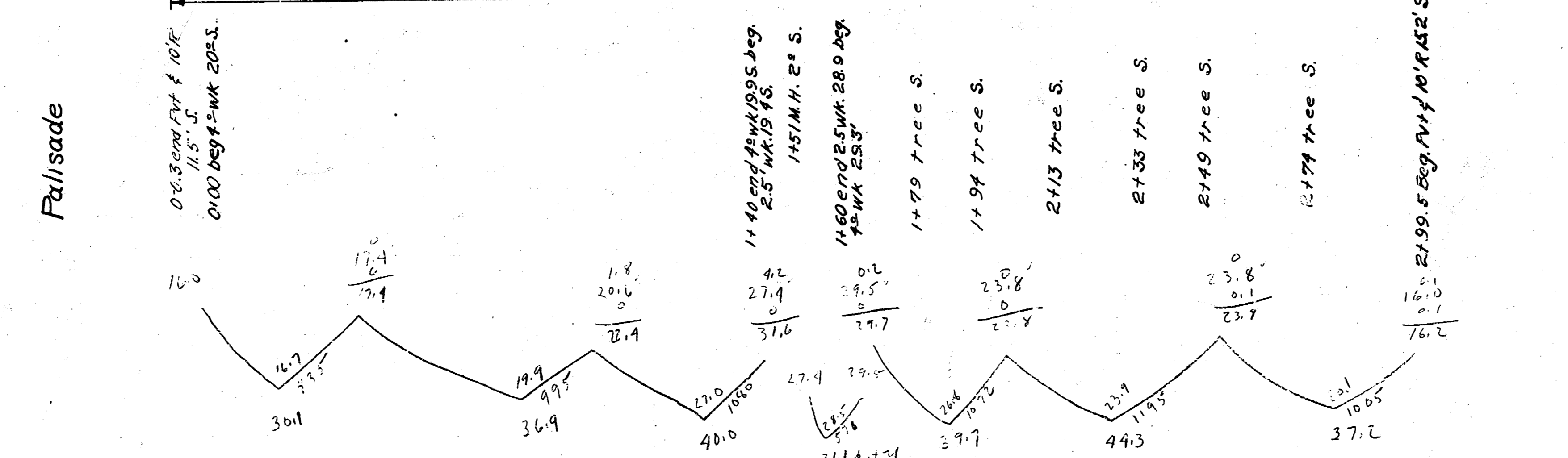
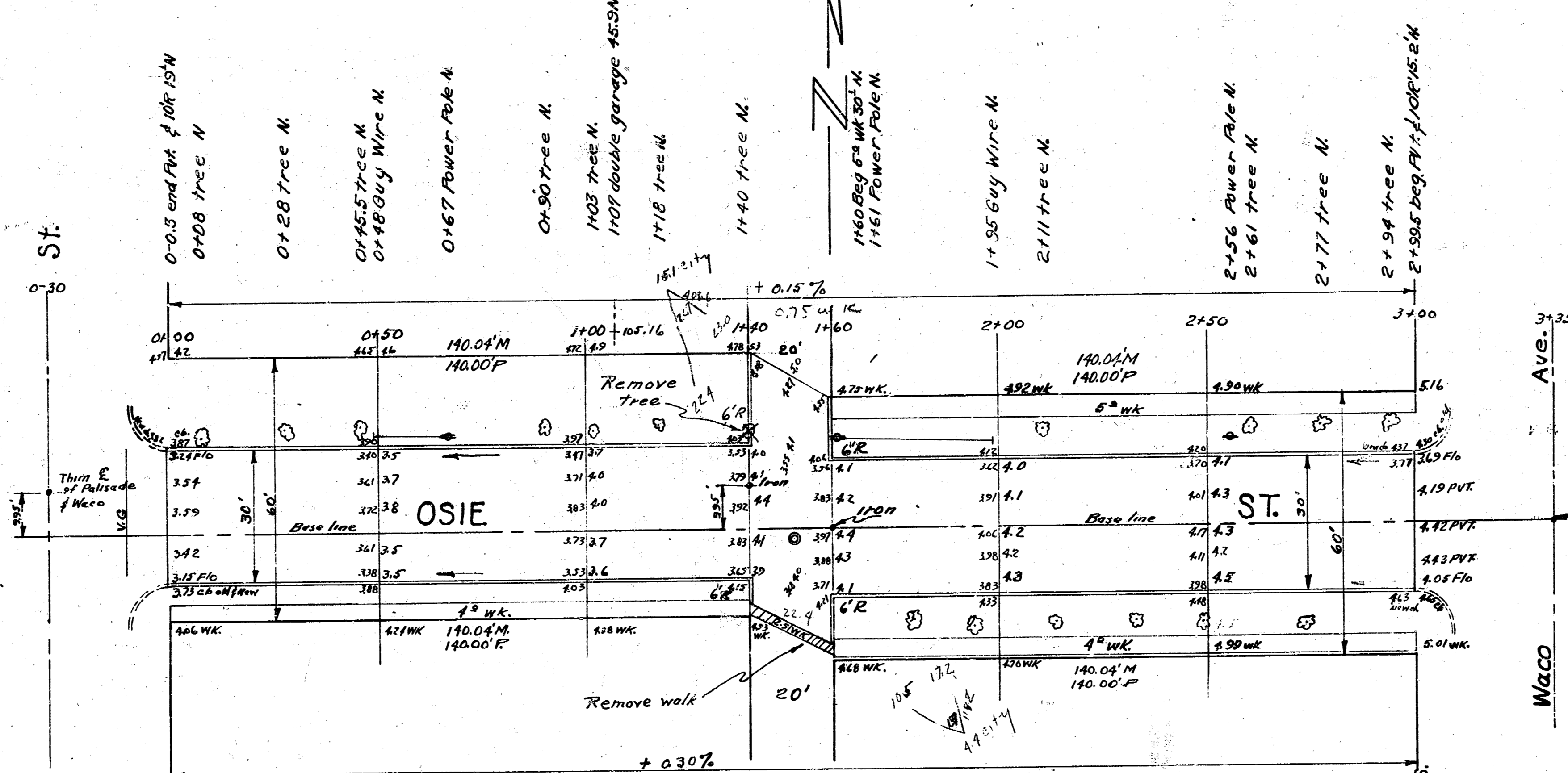
B.M. 103.39 Iron in Trimm. E. Palisade of Osie.

Ties to mon. W. Alley E. Osie W.  
 1. 32.66 S.E. 10" BK Wk. S.S. Osie E.  
 2. 22.20 N. N. to / on E. of Osie W.  
 3. 38.54 S.W. 10" BK Wk. S.S. Osie W.  
 4. 32.25 N.E. 10" BK Wk. S.S. Osie E.

Ties to mon. E. Alley  
 1. 32.66 S.E. 10" BK Wk. S.S. Osie E.  
 2. 22.20 N. N. to / on E. of Osie W.  
 3. 38.54 S.W. 10" BK Wk. S.S. Osie W.  
 4. 32.25 N.E. 10" BK Wk. S.S. Osie E.

B.M. 104.35 Iron in Trimm. Waco of E. Osie.

Prof.	City	Total
30.1	17.1	47.2
30.9	4.4	35.3
40.0	2.1	42.1
39.7	10.6	50.3
49.3	11.0	60.3
57.3	49.7	107.0
22.2		
11.0		
25.10	41.40	66.50



Note: All drives have R except those on S.S. from 20.00 to 25.00 which shall be of the ramp type

**OSIE ST.**  
 E.L. Palisade to W.L. Waco  
 30' conc. & cb.  
 City of Wichita, Kansas  
 L.K. White City Engineer  
 Feb 1950 Project No. C13-150