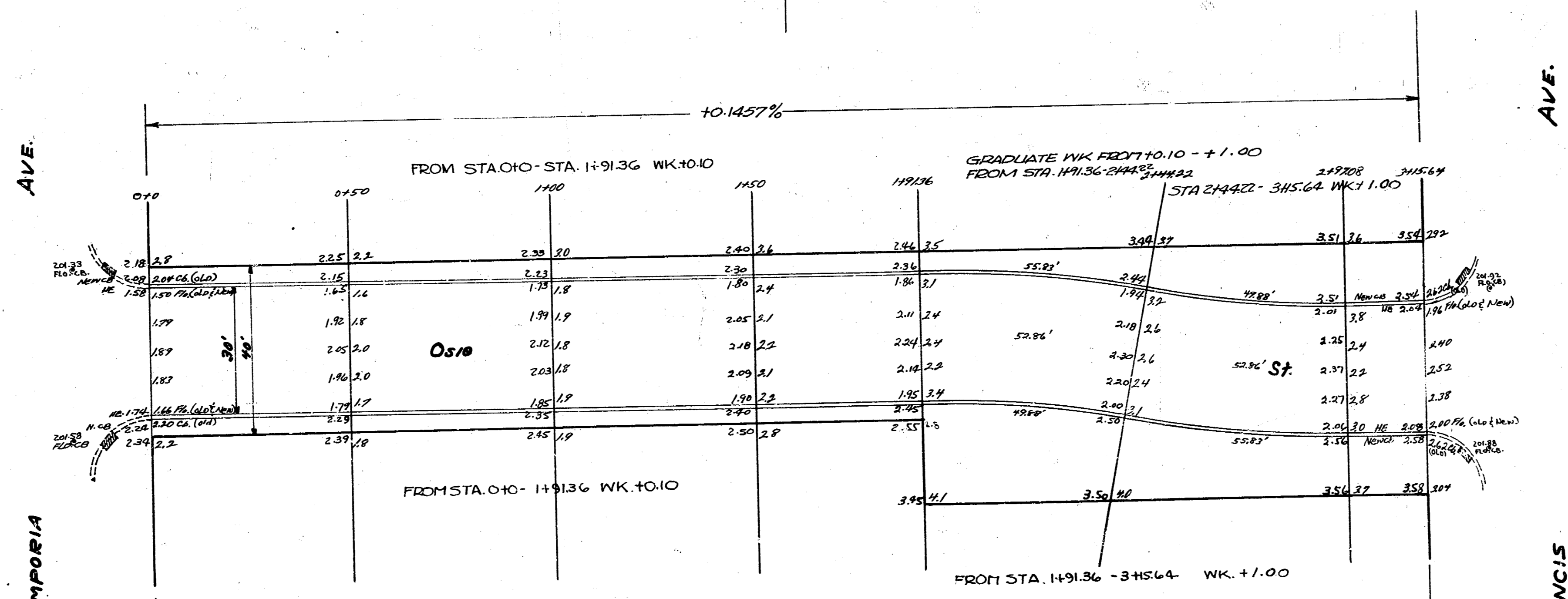
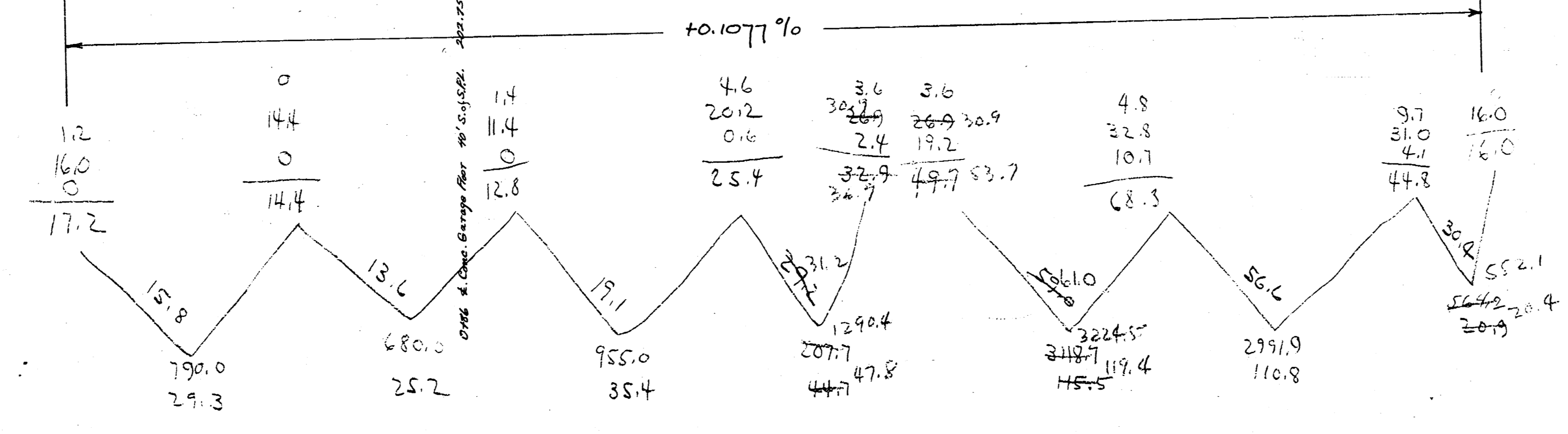


D.M. RACH "X" M. End C.B., Top Cl. NE. Co. Emporia # One
 Note: Stationing is on R.

Calculated:
 Radn 2515' - 2445' - 2315'
 L of Ch 4888' - 4728' - 4588'
 Δ 11° 22'



Handwritten notes on the left side of the drawing, including stationing and elevation data.



OSIE ST.
 E.L. EMPORIA to W.L. ST. FRANCIS
 30' CONC. & CB.
 CITY of WICHITA, KANS.
 L. K. WHITE CITY ENGINEER
 MAY 1949 PROJECT No C19-78