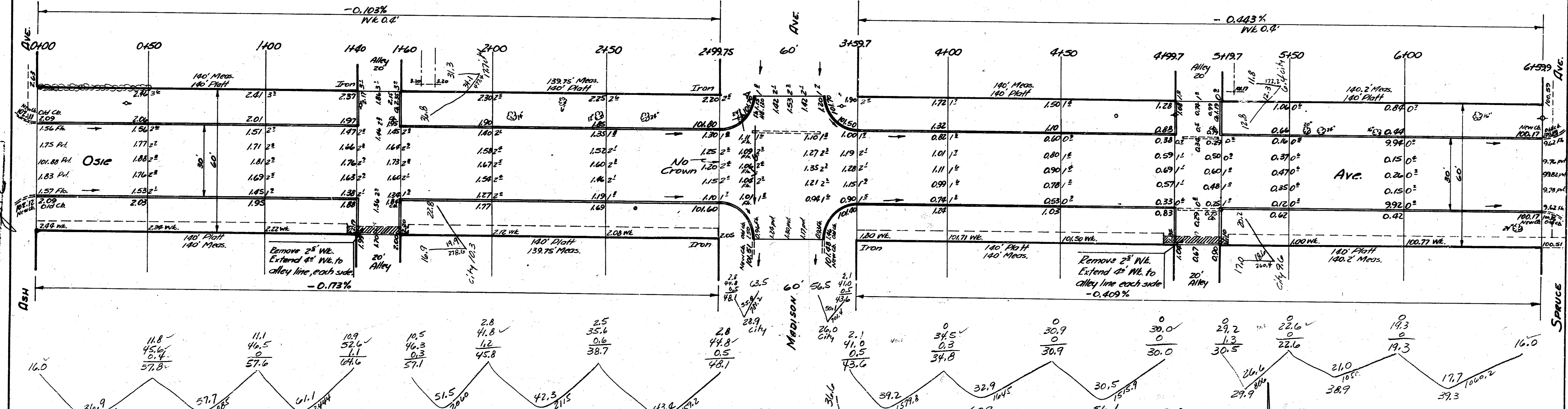


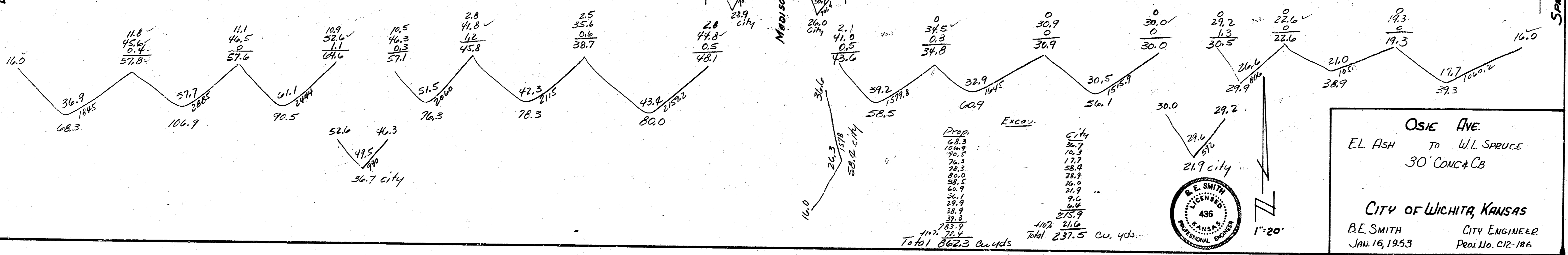
B.M. 102.81 S.E. Cor lower conc. stop no. #1657 So. Grove  
 B.M. 100.04 1/4 in globe chr. W.L. Black Spruce near S.L. Osie

- 01400 8' 0" 53° 34' 12" CI
- 01401 8' 0" 53° 34' 12" CI
- 1402 5' 0" 142° 00' 00" CI
- 1403 5' 0" 142° 00' 00" CI
- 1404 5' 0" 142° 00' 00" CI
- 1405 5' 0" 142° 00' 00" CI
- 1406 5' 0" 142° 00' 00" CI
- 1407 5' 0" 142° 00' 00" CI
- 1408 5' 0" 142° 00' 00" CI
- 1409 5' 0" 142° 00' 00" CI
- 1410 5' 0" 142° 00' 00" CI
- 1411 5' 0" 142° 00' 00" CI
- 1412 5' 0" 142° 00' 00" CI
- 1413 5' 0" 142° 00' 00" CI
- 1414 5' 0" 142° 00' 00" CI
- 1415 5' 0" 142° 00' 00" CI
- 1416 5' 0" 142° 00' 00" CI
- 1417 5' 0" 142° 00' 00" CI
- 1418 5' 0" 142° 00' 00" CI
- 1419 5' 0" 142° 00' 00" CI
- 1420 5' 0" 142° 00' 00" CI
- 1421 5' 0" 142° 00' 00" CI
- 1422 5' 0" 142° 00' 00" CI
- 1423 5' 0" 142° 00' 00" CI
- 1424 5' 0" 142° 00' 00" CI
- 1425 5' 0" 142° 00' 00" CI
- 1426 5' 0" 142° 00' 00" CI
- 1427 5' 0" 142° 00' 00" CI
- 1428 5' 0" 142° 00' 00" CI
- 1429 5' 0" 142° 00' 00" CI
- 1430 5' 0" 142° 00' 00" CI
- 1431 5' 0" 142° 00' 00" CI
- 1432 5' 0" 142° 00' 00" CI
- 1433 5' 0" 142° 00' 00" CI
- 1434 5' 0" 142° 00' 00" CI
- 1435 5' 0" 142° 00' 00" CI
- 1436 5' 0" 142° 00' 00" CI
- 1437 5' 0" 142° 00' 00" CI
- 1438 5' 0" 142° 00' 00" CI
- 1439 5' 0" 142° 00' 00" CI
- 1440 5' 0" 142° 00' 00" CI
- 1441 5' 0" 142° 00' 00" CI
- 1442 5' 0" 142° 00' 00" CI
- 1443 5' 0" 142° 00' 00" CI
- 1444 5' 0" 142° 00' 00" CI
- 1445 5' 0" 142° 00' 00" CI
- 1446 5' 0" 142° 00' 00" CI
- 1447 5' 0" 142° 00' 00" CI
- 1448 5' 0" 142° 00' 00" CI
- 1449 5' 0" 142° 00' 00" CI
- 1450 5' 0" 142° 00' 00" CI
- 1451 5' 0" 142° 00' 00" CI
- 1452 5' 0" 142° 00' 00" CI
- 1453 5' 0" 142° 00' 00" CI
- 1454 5' 0" 142° 00' 00" CI
- 1455 5' 0" 142° 00' 00" CI
- 1456 5' 0" 142° 00' 00" CI
- 1457 5' 0" 142° 00' 00" CI
- 1458 5' 0" 142° 00' 00" CI
- 1459 5' 0" 142° 00' 00" CI
- 1460 5' 0" 142° 00' 00" CI
- 1461 5' 0" 142° 00' 00" CI
- 1462 5' 0" 142° 00' 00" CI
- 1463 5' 0" 142° 00' 00" CI
- 1464 5' 0" 142° 00' 00" CI
- 1465 5' 0" 142° 00' 00" CI
- 1466 5' 0" 142° 00' 00" CI
- 1467 5' 0" 142° 00' 00" CI
- 1468 5' 0" 142° 00' 00" CI
- 1469 5' 0" 142° 00' 00" CI
- 1470 5' 0" 142° 00' 00" CI
- 1471 5' 0" 142° 00' 00" CI
- 1472 5' 0" 142° 00' 00" CI
- 1473 5' 0" 142° 00' 00" CI
- 1474 5' 0" 142° 00' 00" CI
- 1475 5' 0" 142° 00' 00" CI
- 1476 5' 0" 142° 00' 00" CI
- 1477 5' 0" 142° 00' 00" CI
- 1478 5' 0" 142° 00' 00" CI
- 1479 5' 0" 142° 00' 00" CI
- 1480 5' 0" 142° 00' 00" CI
- 1481 5' 0" 142° 00' 00" CI
- 1482 5' 0" 142° 00' 00" CI
- 1483 5' 0" 142° 00' 00" CI
- 1484 5' 0" 142° 00' 00" CI
- 1485 5' 0" 142° 00' 00" CI
- 1486 5' 0" 142° 00' 00" CI
- 1487 5' 0" 142° 00' 00" CI
- 1488 5' 0" 142° 00' 00" CI
- 1489 5' 0" 142° 00' 00" CI
- 1490 5' 0" 142° 00' 00" CI
- 1491 5' 0" 142° 00' 00" CI
- 1492 5' 0" 142° 00' 00" CI
- 1493 5' 0" 142° 00' 00" CI
- 1494 5' 0" 142° 00' 00" CI
- 1495 5' 0" 142° 00' 00" CI
- 1496 5' 0" 142° 00' 00" CI
- 1497 5' 0" 142° 00' 00" CI
- 1498 5' 0" 142° 00' 00" CI
- 1499 5' 0" 142° 00' 00" CI
- 1500 5' 0" 142° 00' 00" CI

NOTE: Chaining E. on S. R



Show amount of work to be done  
 by City



Prop.	Excav.	City
108.3	36.7	71.6
109.4	37.8	71.6
110.5	38.9	71.6
111.6	40.0	71.6
112.7	41.1	71.6
113.8	42.2	71.6
114.9	43.3	71.6
116.0	44.4	71.6
117.1	45.5	71.6
118.2	46.6	71.6
119.3	47.7	71.6
120.4	48.8	71.6
121.5	49.9	71.6
122.6	51.0	71.6
123.7	52.1	71.6
124.8	53.2	71.6
125.9	54.3	71.6
127.0	55.4	71.6
128.1	56.5	71.6
129.2	57.6	71.6
130.3	58.7	71.6
131.4	59.8	71.6
132.5	60.9	71.6
133.6	62.0	71.6
134.7	63.1	71.6
135.8	64.2	71.6
136.9	65.3	71.6
138.0	66.4	71.6
139.1	67.5	71.6
140.2	68.6	71.6
141.3	69.7	71.6
142.4	70.8	71.6
143.5	71.9	71.6
144.6	73.0	71.6
145.7	74.1	71.6
146.8	75.2	71.6
147.9	76.3	71.6
149.0	77.4	71.6
150.1	78.5	71.6
151.2	79.6	71.6
152.3	80.7	71.6
153.4	81.8	71.6
154.5	82.9	71.6
155.6	84.0	71.6
156.7	85.1	71.6
157.8	86.2	71.6
158.9	87.3	71.6
160.0	88.4	71.6
161.1	89.5	71.6
162.2	90.6	71.6
163.3	91.7	71.6
164.4	92.8	71.6
165.5	93.9	71.6
166.6	95.0	71.6
167.7	96.1	71.6
168.8	97.2	71.6
169.9	98.3	71.6
171.0	99.4	71.6
172.1	100.5	71.6
173.2	101.6	71.6
174.3	102.7	71.6
175.4	103.8	71.6
176.5	104.9	71.6
177.6	106.0	71.6
178.7	107.1	71.6
179.8	108.2	71.6
180.9	109.3	71.6
182.0	110.4	71.6
183.1	111.5	71.6
184.2	112.6	71.6
185.3	113.7	71.6
186.4	114.8	71.6
187.5	115.9	71.6
188.6	117.0	71.6
189.7	118.1	71.6
190.8	119.2	71.6
191.9	120.3	71.6
193.0	121.4	71.6
194.1	122.5	71.6
195.2	123.6	71.6
196.3	124.7	71.6
197.4	125.8	71.6
198.5	126.9	71.6
199.6	128.0	71.6
200.7	129.1	71.6
201.8	130.2	71.6
202.9	131.3	71.6
204.0	132.4	71.6
205.1	133.5	71.6
206.2	134.6	71.6
207.3	135.7	71.6
208.4	136.8	71.6
209.5	137.9	71.6
210.6	139.0	71.6
211.7	140.1	71.6
212.8	141.2	71.6
213.9	142.3	71.6
215.0	143.4	71.6
216.1	144.5	71.6
217.2	145.6	71.6
218.3	146.7	71.6
219.4	147.8	71.6
220.5	148.9	71.6
221.6	150.0	71.6
222.7	151.1	71.6
223.8	152.2	71.6
224.9	153.3	71.6
226.0	154.4	71.6
227.1	155.5	71.6
228.2	156.6	71.6
229.3	157.7	71.6
230.4	158.8	71.6
231.5	159.9	71.6
232.6	161.0	71.6
233.7	162.1	71.6
234.8	163.2	71.6
235.9	164.3	71.6
237.0	165.4	71.6
238.1	166.5	71.6
239.2	167.6	71.6
240.3	168.7	71.6
241.4	169.8	71.6
242.5	170.9	71.6
243.6	172.0	71.6
244.7	173.1	71.6
245.8	174.2	71.6
246.9	175.3	71.6
248.0	176.4	71.6
249.1	177.5	71.6
250.2	178.6	71.6
251.3	179.7	71.6
252.4	180.8	71.6
253.5	181.9	71.6
254.6	183.0	71.6
255.7	184.1	71.6
256.8	185.2	71.6
257.9	186.3	71.6
259.0	187.4	71.6
260.1	188.5	71.6
261.2	189.6	71.6
262.3	190.7	71.6
263.4	191.8	71.6
264.5	192.9	71.6
265.6	194.0	71.6
266.7	195.1	71.6
267.8	196.2	71.6
268.9	197.3	71.6
270.0	198.4	71.6
271.1	199.5	71.6
272.2	200.6	71.6
273.3	201.7	71.6
274.4	202.8	71.6
275.5	203.9	71.6
276.6	205.0	71.6
277.7	206.1	71.6
278.8	207.2	71.6
279.9	208.3	71.6
281.0	209.4	71.6
282.1	210.5	71.6
283.2	211.6	71.6
284.3	212.7	71.6
285.4	213.8	71.6
286.5	214.9	71.6
287.6	216.0	71.6
288.7	217.1	71.6
289.8	218.2	71.6
290.9	219.3	71.6
292.0	220.4	71.6
293.1	221.5	71.6
294.2	222.6	71.6
295.3	223.7	71.6
296.4	224.8	71.6
297.5	225.9	71.6
298.6	227.0	71.6
299.7	228.1	71.6
300.8	229.2	71.6
301.9	230.3	71.6
303.0	231.4	71.6
304.1	232.5	71.6
305.2	233.6	71.6
306.3	234.7	71.6
307.4	235.8	71.6
308.5	236.9	71.6
309.6	238.0	71.6
310.7	239.1	71.6
311.8	240.2	71.6
312.9	241.3	71.6
314.0	242.4	71.6
315.1	243.5	71.6
316.2	244.6	71.6
317.3	245.7	71.6
318.4	246.8	71.6
319.5	247.9	71.6
320.6	249.0	71.6
321.7	250.1	71.6
322.8	251.2	71.6
323.9	252.3	71.6
325.0	253.4	71.6
326.1	254.5	71.6
327.2	255.6	71.6
328.3	256.7	71.6
329.4	257.8	71.6
330.5	258.9	71.6
331.6	260.0	71.6
332.7	261.1	71.6
333.8	262.2	71.6
334.9	263.3	71.6
336.0	264.4	71.6
337.1	265.5	71.6
338.2	266.6	71.6
339.3	267.7	71.6
340.4	268.8	71.6
341.5	269.9	71.6
342.6	271.0	71.6
343.7	272.1	71.6
344.8	273.2	71.6
345.9	274.3	71.6
347.0	275.4	71.6
348.1	276.5	71.6
349.2	277.6	71.6
350.3	278.7	71.6
351.4	279.8	71.6
352.5	280.9	71.6
353.6	282.0	71.6
354.7	283.1	71.6
355.8	284.2	71.6
356.9	285.3	71.6
358.0	286.4	71.6
359.1	287.5	