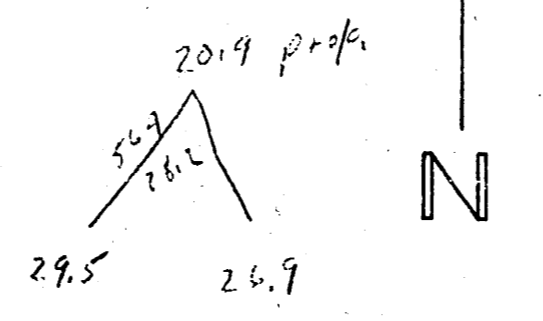
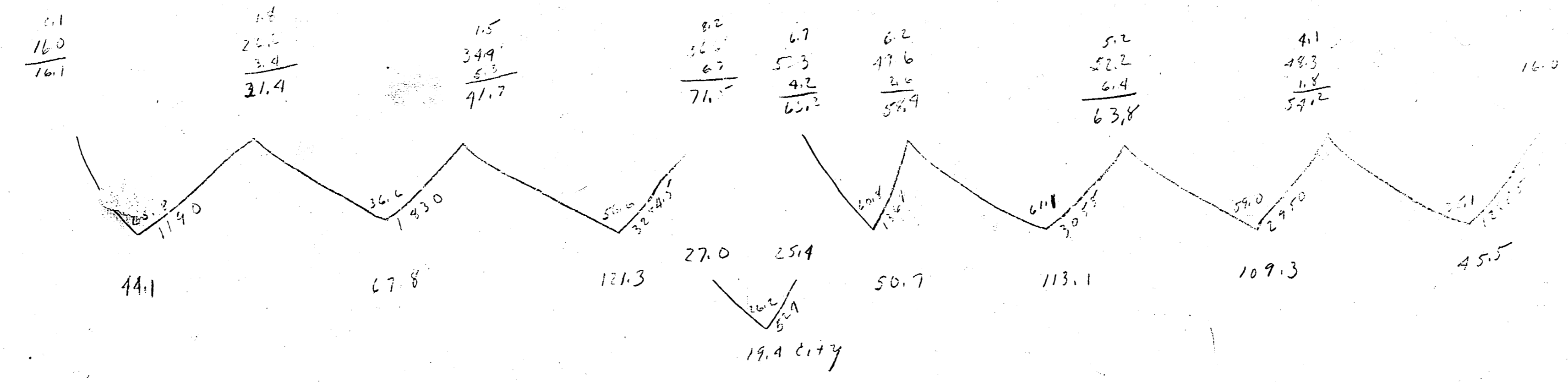
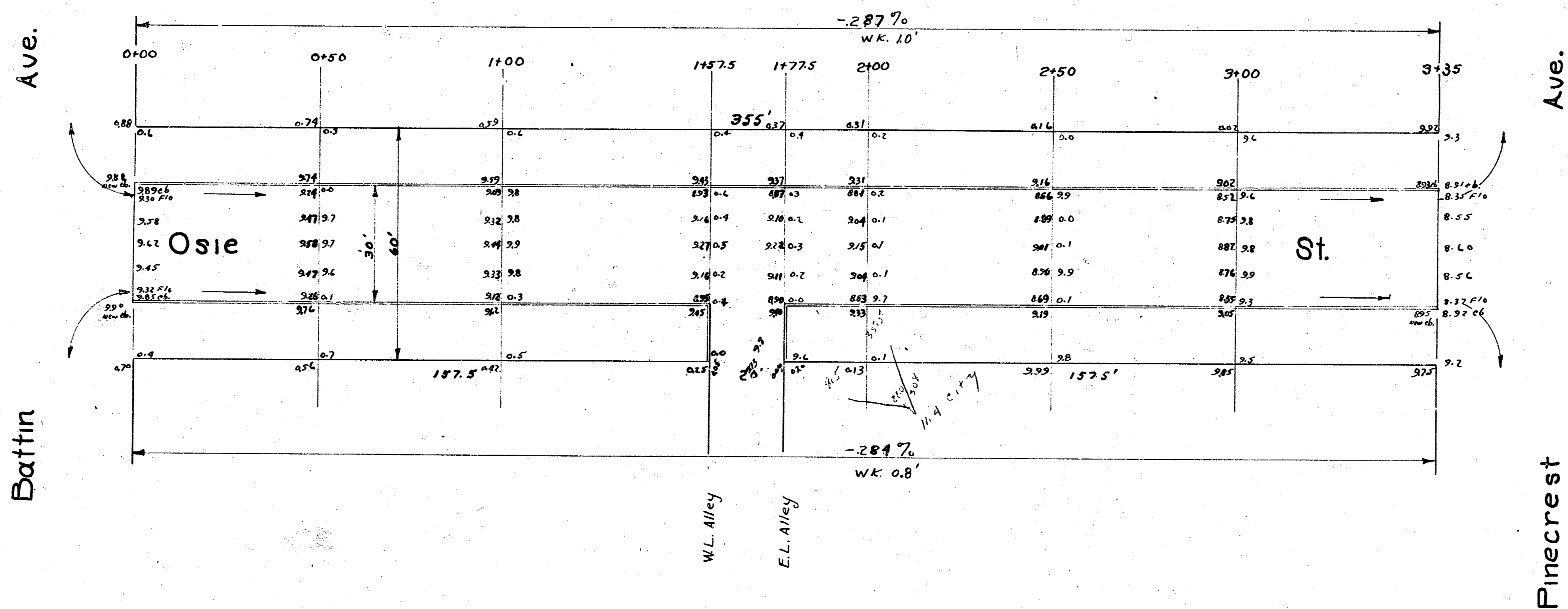


B.M. 148.88 - 6' in Globe, W. end of 3' return, S.W. corner Pinecrest & Osie
 E.M. 148.87 - RR 17 N. K.G. & E. Pk. 100' E. of E.L. Pinecrest & S.L. Harry.
 3.M. 146.89 - Std. S.W. Edgemoor & Harry.



49.1	71.2
67.8	50.5
25.3	35.5
45.9	
50.7	
113.1	
107.3	
45.5	
571.7	
632.6	
632.6	



Osie St.
 E.L. Battin to W.L. Pinecrest
 30' Conc. & Cb.
 City of Wichita, Kansas
 L. K. White - City Engineer
 March 1950 Proj. C-10-1