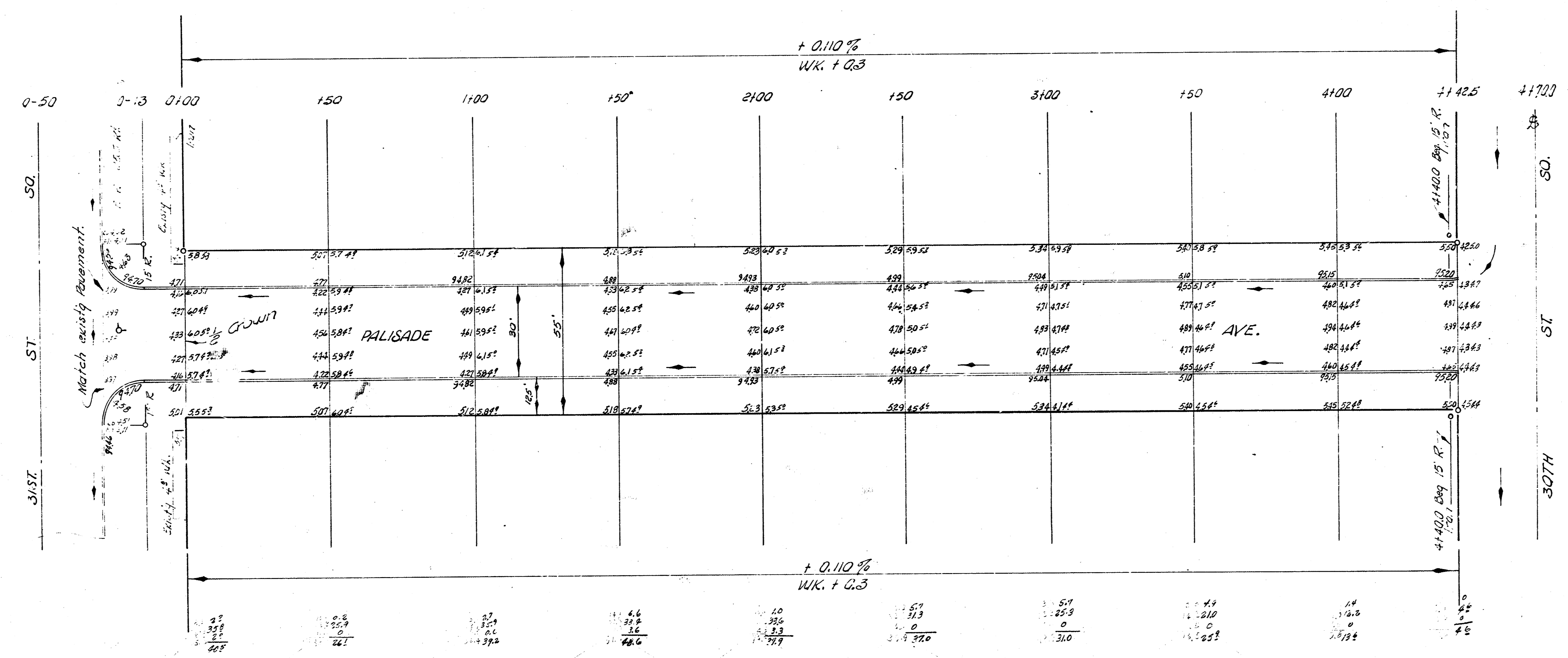
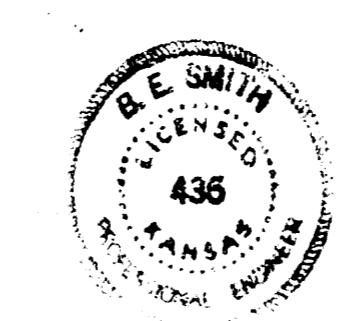


B. M. 94.84 "R" in Ritchie Top to ES Gold of SL 31st
 B. M. 97.47 SE cor conc. Pa. to N.S. 30th & Palisade So.
 Stationing of base line on N. 1/2 of Palisade Ave.

SCALE 1" = 20'



EXCAVATION	
CITY	PROP.
58.7	862.3
3.9	86.2
64.6	948.5 Cu. Yds.



PALISADE AVE.
 NL 31ST ST. SO. TO SL 30TH ST. SO.
 30' CONC. & CB.
 CITY OF WICHITA, KANSAS
 B. E. SMITH CITY ENGINEER
 OCT. 1958, PROJ. NO. C18-10