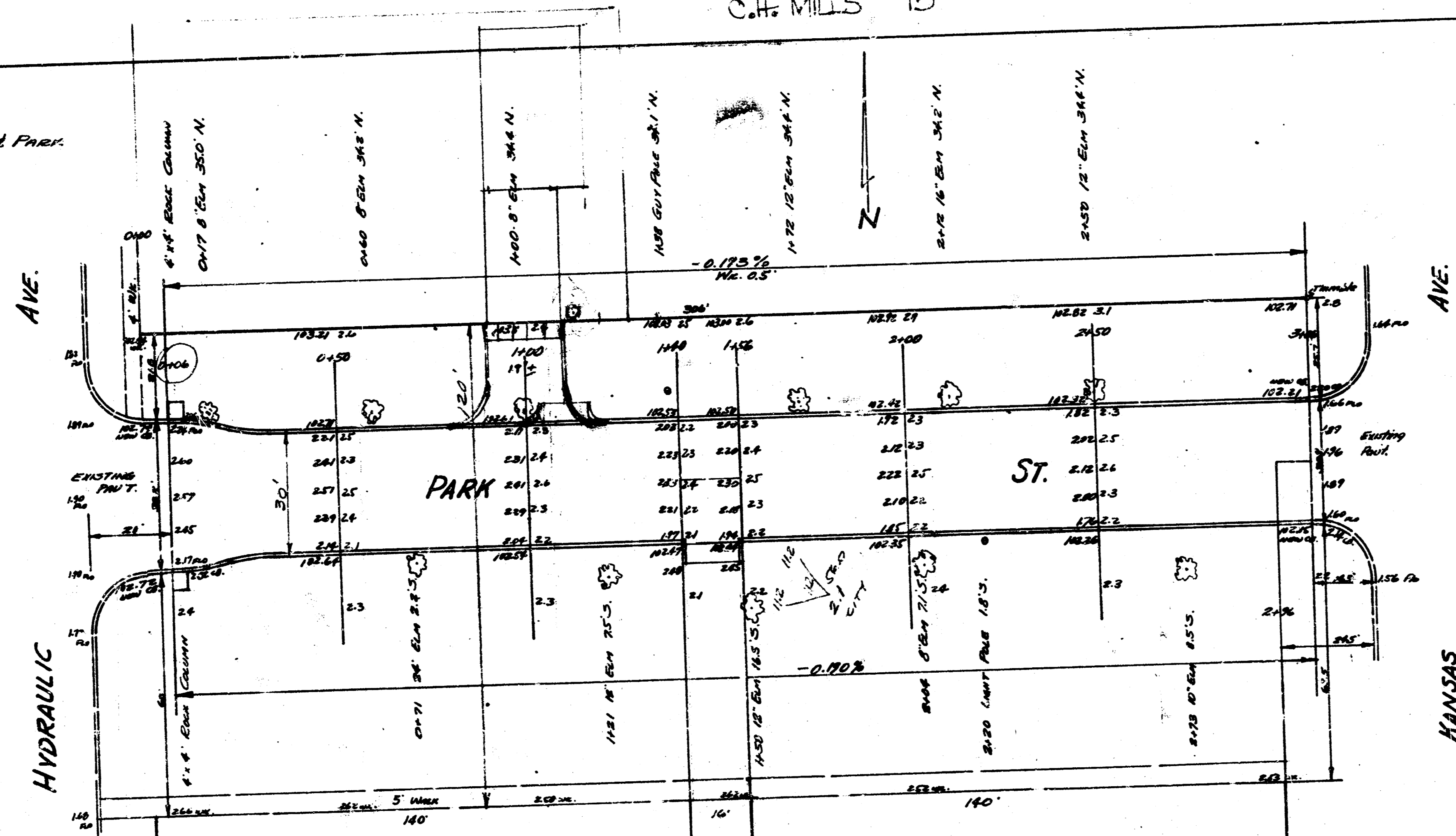
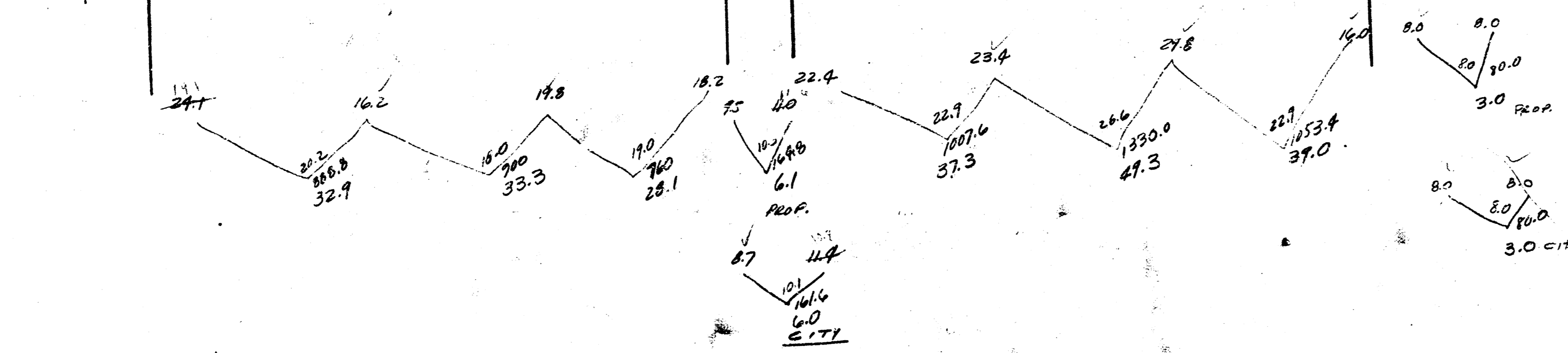


C.H. MILLS 75

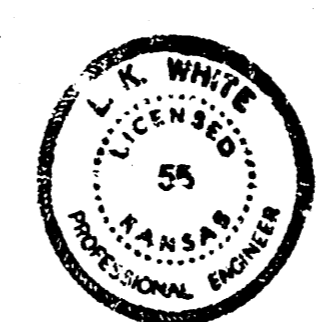
B.M. 102.16 "4" on S. END Co. Rd. S.E. Kansas & Park
 B.M. 102.66 "4" on W. S.E. HYDRAULIC & PARK



PROP.	CITY
32.7	6.0
33.3	2.1
28.1	3.0
6.1	11.1
37.3	16.2
47.3	12.2
39.0	
3.0	
229.0	
40.76	
257.9	CH. YDS.



NOTE: BASE LINE FOR TREES IS ON NEW PROPOSED S.C.B. LINE



4 dr.
PARK ST.
 E.L. HYDRAULIC - W.L. KANSAS
 30' CONC. & CG.
 CITY OF WICHITA, KANSAS
 L.K. WHITE CITY ENGR.
 MAY 1951 PROJ. C-10-147

