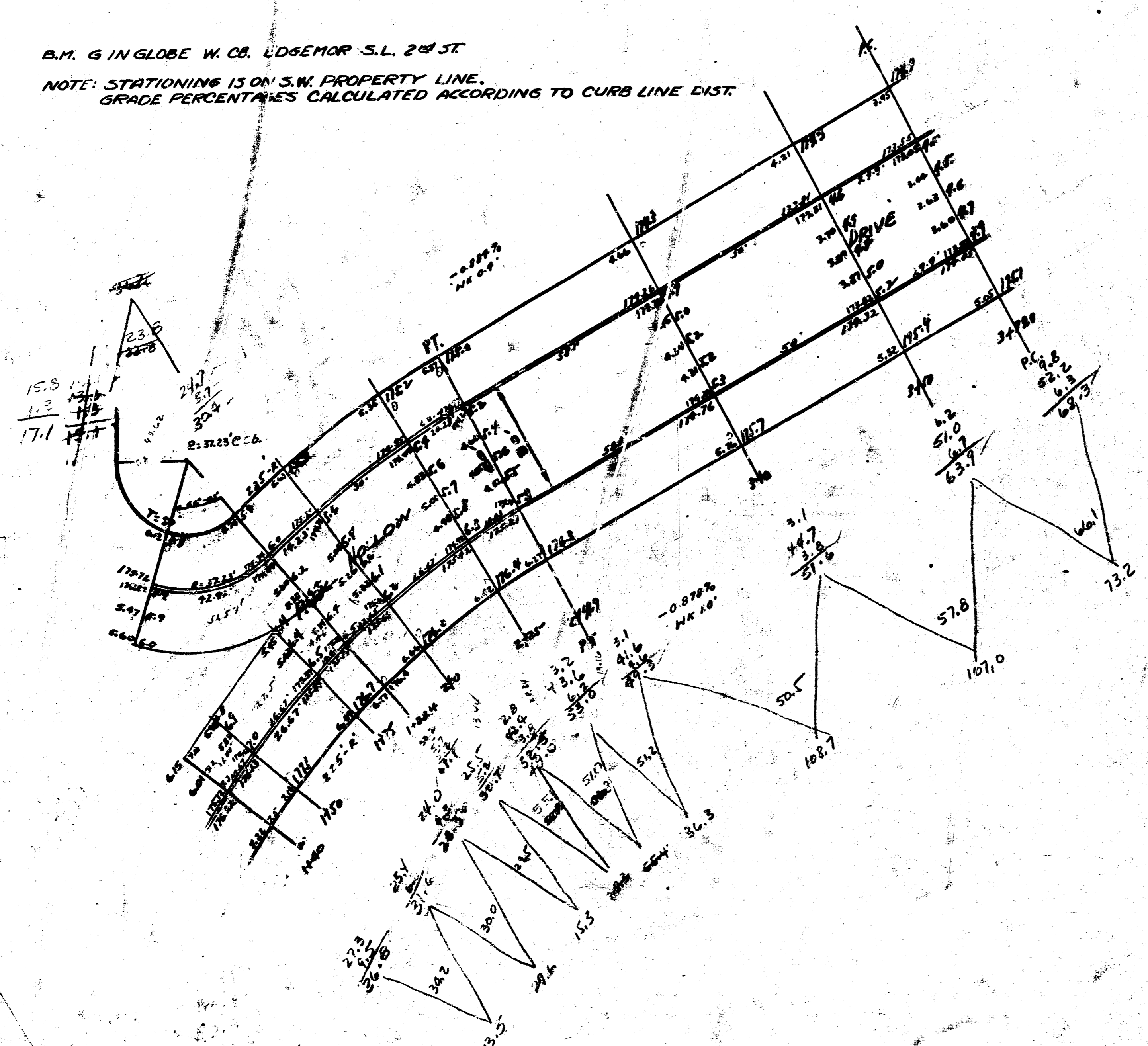


B.M. 6 IN GLOBE W. CO. LDSEMER S.L. 2ND ST
 NOTE: STATIONING IS ON S.W. PROPERTY LINE.
 GRADE PERCENTAGES CALCULATED ACCORDING TO CURB LINE EAST.



PROPERTY

34.2
13.5
29.6
15.3
28.3
55.4
36.3
108.7
107.0
75.2
54.0
156.9
187.0
206.0
212.5
216.3
205.7
95.8
1889.25
110%
183.7
2081.4

PARK HOLLOW DRIVE
 S.E. SECOND TO W.L. Spaulding Parkway
 30' Cor. of Ct.
 CITY OF WICHITA, KANSAS.
 A.M. WHITE CITY ENGINEER
 July 1967

