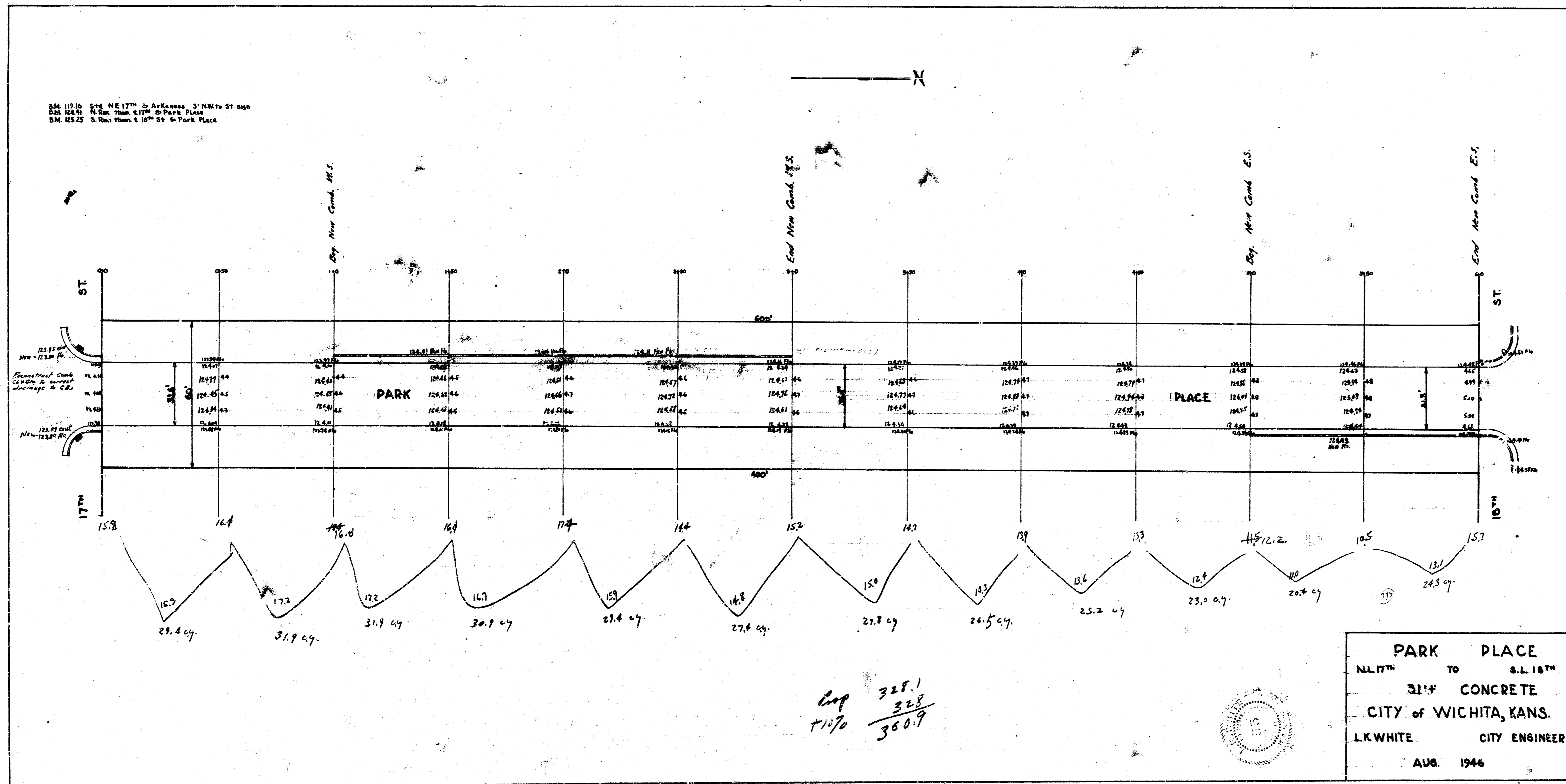
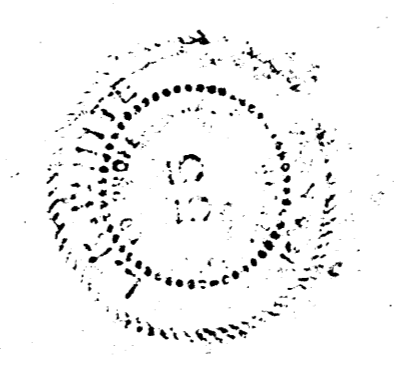


B.M. 119.10 S.W. NE 17th & Arkansas 3' NW to St sign  
 B.M. 124.91 N. 100' from E. 17th to Park Place  
 B.M. 122.25 S. 100' from E. 17th St. to Park Place



$$\begin{array}{r} \text{Comp} \quad 328.1 \\ +1170 \quad 328 \\ \hline 360.9 \end{array}$$



**PARK PLACE**  
 N.L. 17th TO S.L. 10th  
**31" CONCRETE**  
 CITY OF WICHITA, KANS.  
 L.K. WHITE CITY ENGINEER  
 AUG. 1946