

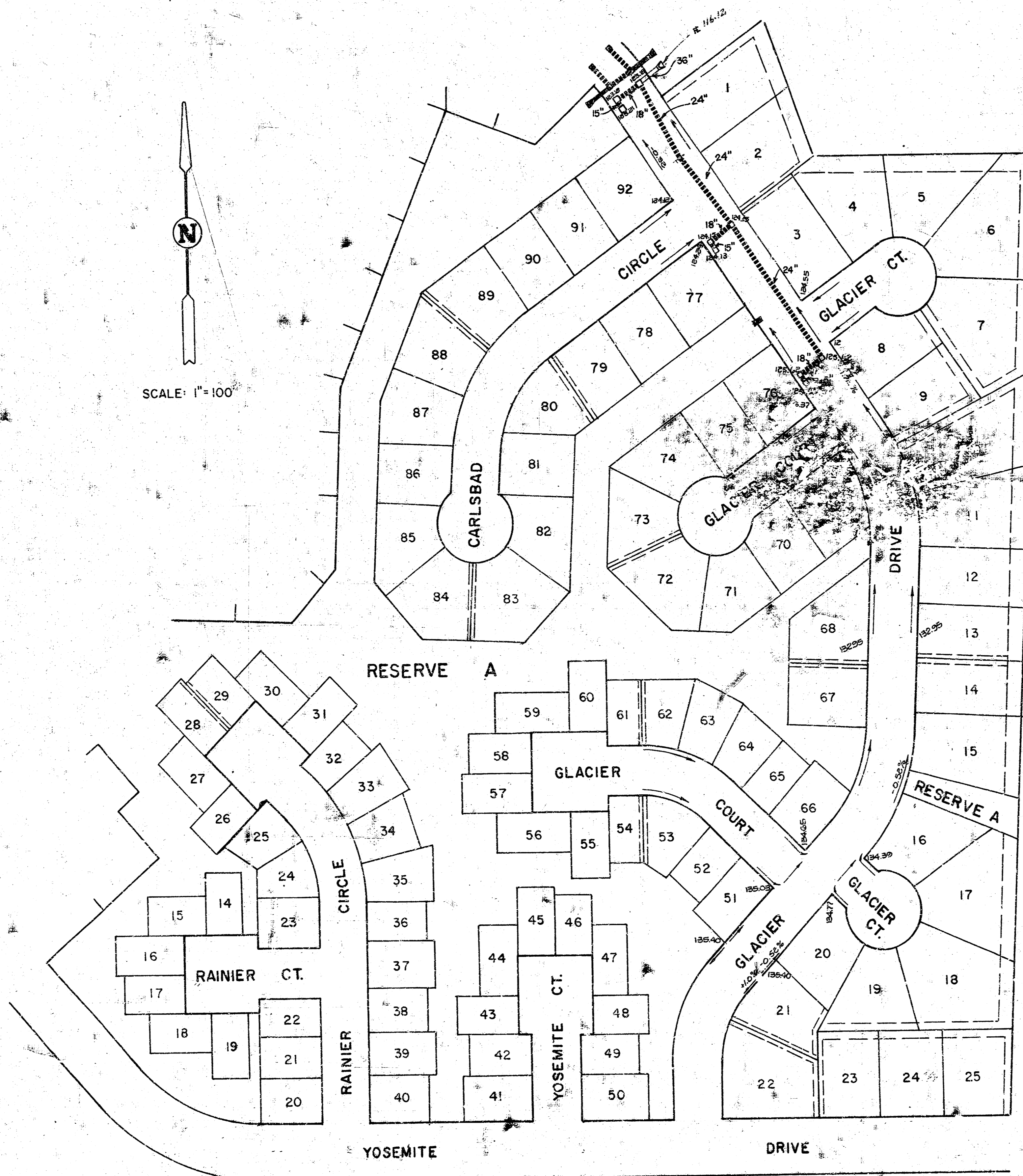
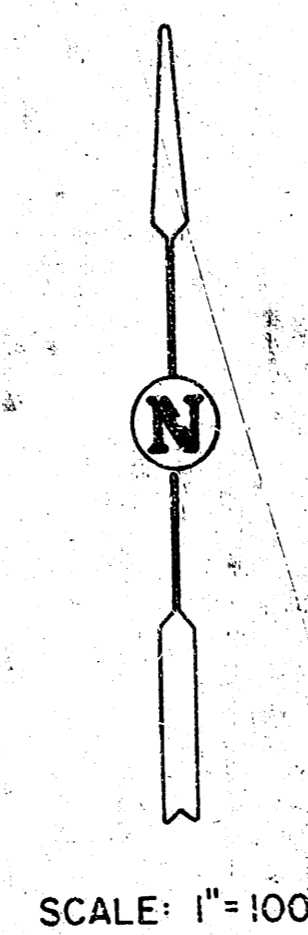
DRAINAGE IN CONNECTION WITH THE PARK

PROJECT NO.

472-76-245-80426-000-000-002

CITY OF WICHITA, KANSAS

DEAN SELLERS, ACTING CITY ENGINEER

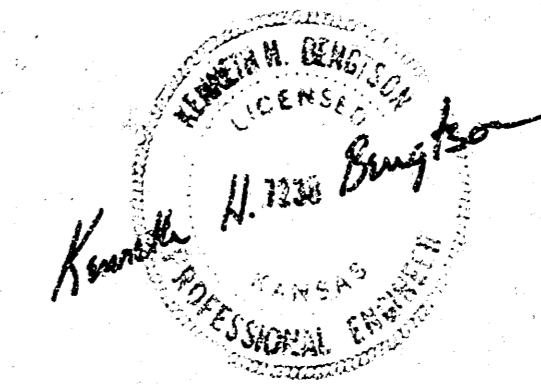


GENERAL NOTES

1. CONTRACTOR SHALL COORDINATE WORK WITH PAVING AND SANITARY CONTRACTORS AND CONTACT RELEVANT UTILITY COMPANIES AND OTHER AGENCIES INVOLVED WITH THIS PROJECT SITE DEVELOPMENT.
2. FIELD ENGINEER SHALL TAKE TIES TO ALL IRONS AND THUMBSCREWS IN THE PROJECT AREA BEFORE CONSTRUCTION BEGINS. FIELD ENGINEER SHALL REPLACE ALL IRONS AND THUMBSCREWS DISTURBED DURING CONSTRUCTION.
3. THE TOPS OF INLETS AND MANHOLES AS NOTED ON THE PLANS MAY VARY SO AS TO MEET PROPOSED TOP OF CURB ELEVATION OR PAVEMENT ELEVATIONS. THE FIELD ENGINEER SHALL LOCATE INLETS AND MANHOLES WITH REFERENCE TO PROPOSED PAVING PLANS OF THE PERTINENT STREETS.
4. ALL METAL PIPES SHALL BE HELICALLY CORRUGATED PIPE. ALL CORRUGATED PIPE SHALL BE SMOOTH FLOW PIPES FOR SIZES 24" DIAMETER AND LARGER. ALL CONNECTIONS FOR THESE PIPES SHALL BE OF FAIRLY WATERTIGHT CONSTRUCTION USING HUGGER TYPE COUPLERS OR EQUAL.
5. ALL CONCRETE SHALL BE "6 - SACK CONCRETE" UNLESS OTHERWISE NOTED.
6. CONTRACTOR SHALL AVOID UNCOVERING EXISTING WATER LINES UNLESS ABSOLUTELY NECESSARY. UNCOVERING SHALL BE DONE ONLY IN THE PRESENCE OF A WATER DEPARTMENT ENGINEER.
7. CONTRACTOR SHALL HAVE THE OPTION OF INSTALLING PRECAST CONCRETE TYPE IA CURB INLETS IN LIEU OF THE BRICK TYPE STRUCTURE. SEE STANDARD DETAIL PRECAST TYPE IA INLET DATED AUGUST, 1979.
8. CONTRACTOR SHALL REMOVE ONLY THOSE TREES DESIGNATED BY CITY OF WICHITA ENGINEERING DEPARTMENT.

INDEX TO DRAWINGS

- 1 TITLE SHEET
- 2-3 PLAN & PROFILE
- 4 TYPE IA CURB INLET
- 5 TYPE I CURB INLET



Van Doren - Hazard - Stallings
Architects • Engineers • Planners
Topeka Wichita Minneapolis

Sheet 1 of 13

