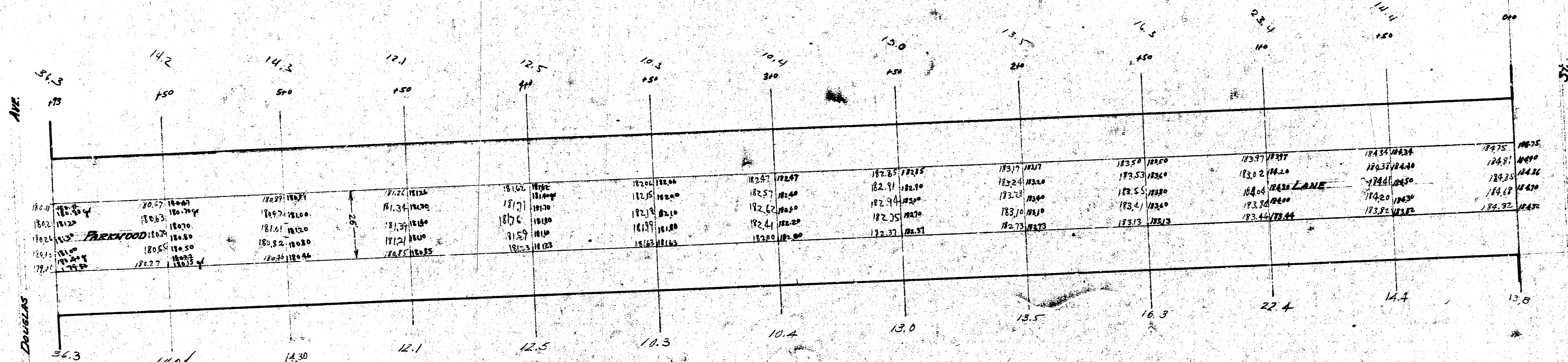


Parkwood Lane - N.L. DOUGLASS to S.L. FIRST

N.H. Elev. 115.20 @ in. plate on W. of Parkwood @ S.L. 1st

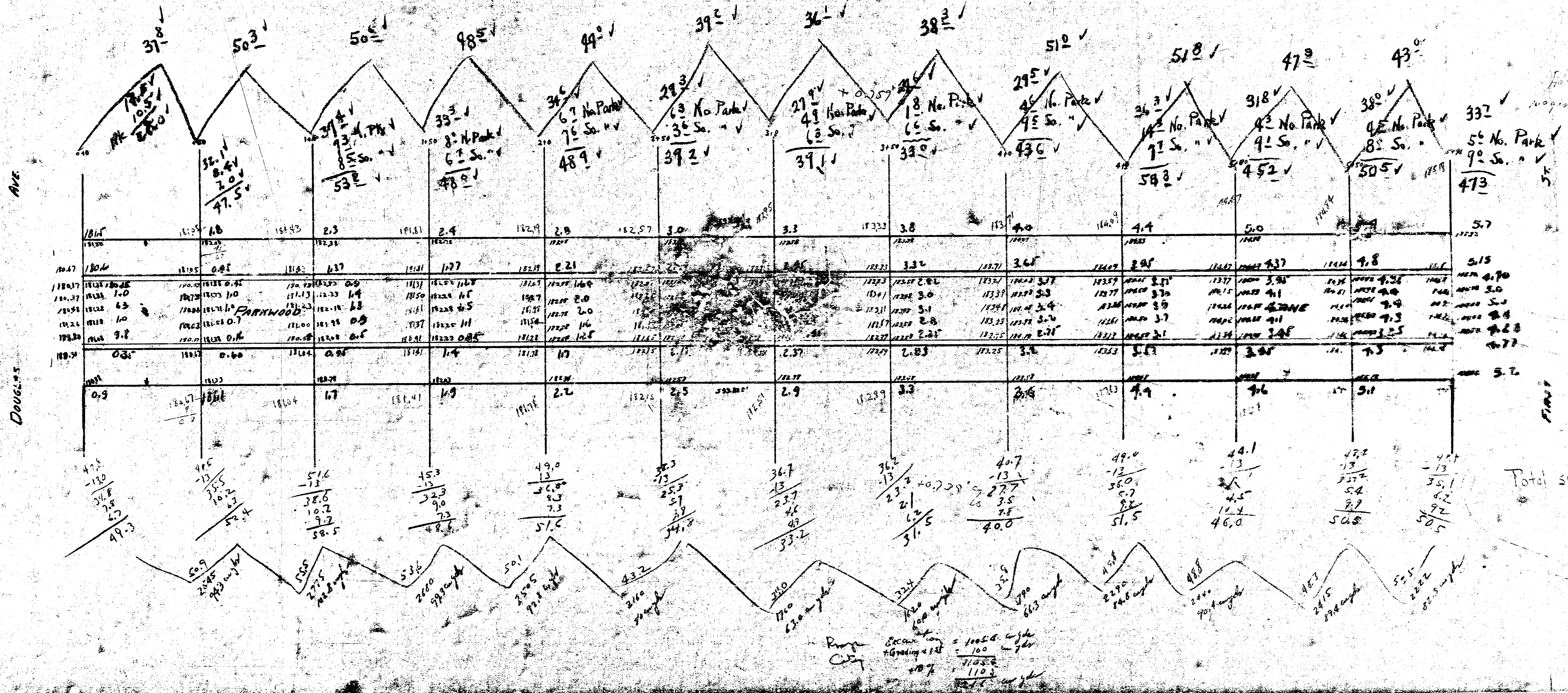


25.2
40.1 cyp
14.2
26.7 cyp
13.2
25.4 cyp
12.3
22.8 cyp
11.7
21.1 cyp
10.4
19.3 cyp
11.7
21.7 cyp
13.3
24.6 cyp
14.9
27.5 cyp
17.4
35.9 cyp
10.8
34.1 cyp
14.1
26.1 cyp

$$\frac{324.0}{3.4} = 95.3$$

$$95.3 \times 1070 = 102,171$$

26.2-30 Cont. & better only
 B.M. Elev. - 181.30 - Nail in North Side of Pole at NE. Cor. Parkwood & Douglas



Total sums of ...
 538.3
 185.84
 497.5