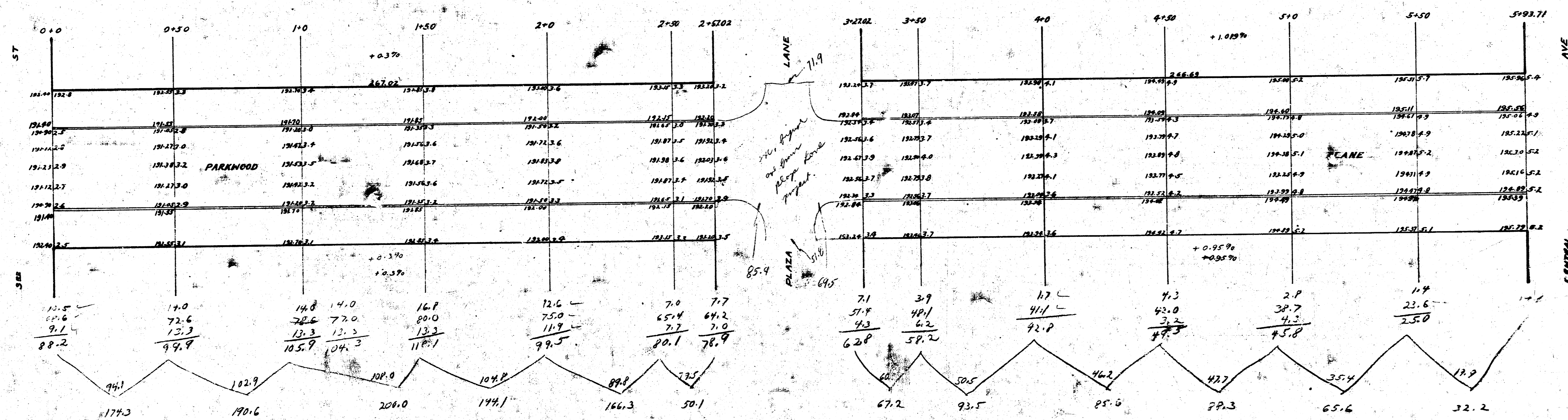


B.M. 19118 6" IN GLOBE IN C.B. PARKWOOD S.L. 388
 B.M. 19526 PROP IRON S.E. COR. PARKWOOD + CENTRAL



PARKWOOD LANE
 N.L. 388 TO S.L. CENTRAL
 30' CONC. + INT. CB.
 CITY OF WICHITA, KAN.
 L.K. WHITE, CITY ENGINEER
 APRIL 1946

1907.8
 1908.6
 1909.4
 1910.2
 1911.0
 1911.8
 1912.6
 1913.4
 1914.2
 1915.0
 1915.8
 1916.6
 1917.4
 1918.2
 1919.0
 1919.8
 1920.6
 1921.4
 1922.2
 1923.0
 1923.8
 1924.6
 1925.4
 1926.2
 1927.0
 1927.8
 1928.6
 1929.4
 1930.2
 1931.0
 1931.8
 1932.6
 1933.4
 1934.2
 1935.0
 1935.8
 1936.6
 1937.4
 1938.2
 1939.0
 1939.8
 1940.6
 1941.4
 1942.2
 1943.0
 1943.8
 1944.6
 1945.4
 1946.2
 1947.0
 1947.8
 1948.6
 1949.4
 1950.2
 1951.0
 1951.8
 1952.6
 1953.4
 1954.2
 1955.0
 1955.8
 1956.6
 1957.4
 1958.2
 1959.0
 1959.8
 1960.6
 1961.4
 1962.2
 1963.0
 1963.8
 1964.6
 1965.4
 1966.2
 1967.0
 1967.8
 1968.6
 1969.4
 1970.2
 1971.0
 1971.8
 1972.6
 1973.4
 1974.2
 1975.0
 1975.8
 1976.6
 1977.4
 1978.2
 1979.0
 1979.8
 1980.6
 1981.4
 1982.2
 1983.0
 1983.8
 1984.6
 1985.4
 1986.2
 1987.0
 1987.8
 1988.6
 1989.4
 1990.2
 1991.0
 1991.8
 1992.6
 1993.4
 1994.2
 1995.0
 1995.8
 1996.6
 1997.4
 1998.2
 1999.0
 1999.8
 2000.6
 2001.4
 2002.2
 2003.0
 2003.8
 2004.6
 2005.4
 2006.2
 2007.0
 2007.8
 2008.6
 2009.4
 2010.2
 2011.0
 2011.8
 2012.6
 2013.4
 2014.2
 2015.0
 2015.8
 2016.6
 2017.4
 2018.2
 2019.0
 2019.8
 2020.6
 2021.4
 2022.2
 2023.0
 2023.8
 2024.6
 2025.4
 2026.2
 2027.0
 2027.8
 2028.6
 2029.4
 2030.2
 2031.0
 2031.8
 2032.6
 2033.4
 2034.2
 2035.0
 2035.8
 2036.6
 2037.4
 2038.2
 2039.0
 2039.8
 2040.6
 2041.4
 2042.2
 2043.0
 2043.8
 2044.6
 2045.4
 2046.2
 2047.0
 2047.8
 2048.6
 2049.4
 2050.2
 2051.0
 2051.8
 2052.6
 2053.4
 2054.2
 2055.0
 2055.8
 2056.6
 2057.4
 2058.2
 2059.0
 2059.8
 2060.6
 2061.4
 2062.2
 2063.0
 2063.8
 2064.6
 2065.4
 2066.2
 2067.0
 2067.8
 2068.6
 2069.4
 2070.2
 2071.0
 2071.8
 2072.6
 2073.4
 2074.2
 2075.0
 2075.8
 2076.6
 2077.4
 2078.2
 2079.0
 2079.8
 2080.6
 2081.4
 2082.2
 2083.0
 2083.8
 2084.6
 2085.4
 2086.2
 2087.0
 2087.8
 2088.6
 2089.4
 2090.2
 2091.0
 2091.8
 2092.6
 2093.4
 2094.2
 2095.0
 2095.8
 2096.6
 2097.4
 2098.2
 2099.0
 2099.8
 2100.6
 2101.4
 2102.2
 2103.0
 2103.8
 2104.6
 2105.4
 2106.2
 2107.0
 2107.8
 2108.6
 2109.4
 2110.2
 2111.0
 2111.8
 2112.6
 2113.4
 2114.2
 2115.0
 2115.8
 2116.6
 2117.4
 2118.2
 2119.0
 2119.8
 2120.6
 2121.4
 2122.2
 2123.0
 2123.8
 2124.6
 2125.4
 2126.2
 2127.0
 2127.8
 2128.6
 2129.4
 2130.2
 2131.0
 2131.8
 2132.6
 2133.4
 2134.2
 2135.0
 2135.8
 2136.6
 2137.4
 2138.2
 2139.0
 2139.8
 2140.6
 2141.4
 2142.2
 2143.0
 2143.8
 2144.6
 2145.4
 2146.2
 2147.0
 2147.8
 2148.6
 2149.4
 2150.2
 2151.0
 2151.8
 2152.6
 2153.4
 2154.2
 2155.0
 2155.8
 2156.6
 2157.4
 2158.2
 2159.0
 2159.8
 2160.6
 2161.4
 2162.2
 2163.0
 2163.8
 2164.6
 2165.4
 2166.2
 2167.0
 2167.8
 2168.6
 2169.4
 2170.2
 2171.0
 2171.8
 2172.6
 2173.4
 2174.2
 2175.0
 2175.8
 2176.6
 2177.4
 2178.2
 2179.0
 2179.8
 2180.6
 2181.4
 2182.2
 2183.0
 2183.8
 2184.6
 2185.4
 2186.2
 2187.0
 2187.8
 2188.6
 2189.4
 2190.2
 2191.0
 2191.8
 2192.6
 2193.4
 2194.2
 2195.0
 2195.8
 2196.6
 2197.4
 2198.2
 2199.0
 2199.8
 2200.6
 2201.4
 2202.2
 2203.0
 2203.8
 2204.6
 2205.4
 2206.2
 2207.0
 2207.8
 2208.6
 2209.4
 2210.2
 2211.0
 2211.8
 2212.6
 2213.4
 2214.2
 2215.0
 2215.8
 2216.6
 2217.4
 2218.2
 2219.0
 2219.8
 2220.6
 2221.4
 2222.2
 2223.0
 2223.8
 2224.6
 2225.4
 2226.2
 2227.0
 2227.8
 2228.6
 2229.4
 2230.2
 2231.0
 2231.8
 2232.6
 2233.4
 2234.2
 2235.0
 2235.8
 2236.6
 2237.4
 2238.2
 2239.0
 2239.8
 2240.6
 2241.4
 2242.2
 2243.0
 2243.8
 2244.6
 2245.4
 2246.2
 2247.0
 2247.8
 2248.6
 2249.4
 2250.2
 2251.0
 2251.8
 2252.6
 2253.4
 2254.2
 2255.0
 2255.8
 2256.6
 2257.4
 2258.2
 2259.0
 2259.8
 2260.6
 2261.4
 2262.2
 2263.0
 2263.8
 2264.6
 2265.4
 2266.2
 2267.0
 2267.8
 2268.6
 2269.4
 2270.2
 2271.0
 2271.8
 2272.6
 2273.4
 2274.2
 2275.0
 2275.8
 2276.6
 2277.4
 2278.2
 2279.0
 2279.8
 2280.6
 2281.4
 2282.2
 2283.0
 2283.8
 2284.6
 2285.4
 2286.2
 2287.0
 2287.8
 2288.6
 2289.4
 2290.2
 2291.0
 2291.8
 2292.6
 2293.4
 2294.2
 2295.0
 2295.8
 2296.6
 2297.4
 2298.2
 2299.0
 2299.8
 2300.6
 2301.4
 2302.2
 2303.0
 2303.8
 2304.6
 2305.4
 2306.2
 2307.0
 2307.8
 2308.6
 2309.4
 2310.2
 2311.0
 2311.8
 2312.6
 2313.4
 2314.2
 2315.0
 2315.8
 2316.6
 2317.4
 2318.2
 2319.0
 2319.8
 2320.6
 2321.4
 2322.2
 2323.0
 2323.8
 2324.6
 2325.4
 2326.2
 2327.0
 2327.8
 2328.6
 2329.4
 2330.2
 2331.0
 2331.8
 2332.6
 2333.4
 2334.2
 2335.0
 2335.8
 2336.6
 2337.4
 2338.2
 2339.0
 2339.8
 2340.6
 2341.4
 2342.2
 2343.0
 2343.8
 2344.6
 2345.4
 2346.2
 2347.0
 2347.8
 2348.6
 2349.4
 2350.2
 2351.0
 2351.8
 2352.6
 2353.4
 2354.2
 2355.0
 2355.8
 2356.6
 2357.4
 2358.2
 2359.0
 2359.8
 2360.6
 2361.4
 2362.2
 2363.0
 2363.8
 2364.6
 2365.4
 2366.2
 2367.0
 2367.8
 2368.6
 2369.4
 2370.2
 2371.0
 2371.8
 2372.6
 2373.4
 2374.2
 2375.0
 2375.8
 2376.6
 2377.4
 2378.2
 2379.0
 2379.8
 2380.6
 2381.4
 2382.2
 2383.0
 2383.8
 2384.6
 2385.4
 2386.2
 2387.0
 2387.8
 2388.6
 2389.4
 2390.2
 2391.0
 2391.8
 2392.6
 2393.4
 2394.2
 2395.0
 2395.8
 2396.6
 2397.4
 2398.2
 2399.0
 2399.8
 2400.6
 2401.4
 2402.2
 2403.0
 2403.8
 2404.6
 2405.4
 2406.2
 2407.0
 2407.8
 2408.6
 2409.4
 2410.2
 2411.0
 2411.8
 2412.6
 2413.4
 2414.2
 2415.0
 2415.8
 2416.6
 2417.4
 2418.2
 2419.0
 2419.8
 2420.6
 2421.4
 2422.2
 2423.0
 2423.8
 2424.6
 2425.4
 2426.2
 2427.0
 2427.8
 2428.6
 2429.4
 2430.2
 2431.0
 2431.8
 2432.6
 2433.4
 2434.2
 2435.0
 2435.8
 2436.6
 2437.4
 2438.2
 2439.0
 2439.8
 2440.6
 2441.4
 2442.2
 2443.0
 2443.8
 2444.6
 2445.4
 2446.2
 2447.0
 2447.8
 2448.6
 2449.4
 2450.2
 2451.0
 2451.8
 2452.6
 2453.4
 2454.2
 2455.0
 2455.8
 2456.6
 2457.4
 2458.2
 2459.0
 2459.8
 2460.6
 2461.4
 2462.2
 2463.0
 2463.8
 2464.6
 2465.4
 2466.2
 2467.0
 2467.8
 2468.6
 2469.4
 2470.2
 2471.0
 2471.8
 2472.6
 2473.4
 2474.2
 2475.0
 2475.8
 2476.6
 2477.4
 2478.2
 2479.0
 2479.8
 2480.6
 2481.4
 2482.2
 2483.0
 2483.8
 2484.6
 2485.4
 2486.2
 2487.0
 2487.8
 2488.6
 2489.4
 2490.2
 2491.0
 2491.8
 2492.6
 2493.4
 2494.2
 2495.0
 2495.8
 2496.6
 2497.4
 2498.2
 2499.0
 2499.8
 2500.6
 2501.4
 2502.2
 2503.0
 2503.8
 2504.6
 2505.4
 2506.2
 2507.0
 2507.8
 2508.6
 2509.4
 2510.2
 2511.0
 2511.8
 2512.6
 2513.4
 2514.2
 2515.0
 2515.8
 2516.6
 2517.4
 2518.2
 2519.0
 2519.8
 2520.6
 2521.4
 2522.2
 2523.0
 2523.8
 2524.6
 2525.4
 2526.2
 2527.0
 2527.8
 2528.6
 2529.4
 2530.2
 2531.0
 2531.8
 2532.6
 2533.4
 2534.2
 2535.0
 2535.8
 2536.6
 2537.4
 2538.2
 2539.0
 2539.8
 2540.6
 2541.4
 2542.2
 2543.0
 2543.8
 2544.6
 2545.4
 2546.2
 2547.0
 2547.8
 2548.6
 2549.4
 2550.2
 2551.0
 2551.8
 2552.6
 2553.4
 2554.2
 2555.0
 2555.8
 2556.6
 2557.4
 2558.2
 2559.0
 2559.8
 2560.6
 2561.4
 2562.2
 2563.0
 2563.8
 2564.6
 2565.4
 2566.2
 2567.0
 2567.8
 2568.6
 2569.4
 2570.2
 2571.0
 2571.8
 2572.6
 2573.4
 2574.2
 2575.0
 2575.8
 2576.6
 2577.4
 2578.2
 2579.0
 2579.8
 2580.6
 2581.4
 2582.2
 2583.0
 2583.8
 2584.6
 2585.4
 2586.2
 2587.0
 2587.8
 2588.6
 2589.4
 2590.2
 2591.0
 2591.8
 2592.6
 2593.4
 2594.2
 2595.0
 2595.8
 2596.6
 2597.4
 2598.2
 2599.0
 2599.8
 2600.6
 2601.4
 2602.2
 2603.0
 2603.8
 2604.6
 2605.4
 2606.2
 2607.0
 2607.8
 2608.6
 2609.4
 2610.2
 2611.0
 2611.8
 2612.6
 2613.4
 2614.2
 2615.0
 2615.8
 2616.6
 2617.4
 2618.2
 2619.0
 2619.8
 2620.6
 2621.4
 2622.2
 2623.0
 2623.8
 2624.6
 2625.4
 2626.2
 2627.0
 2627.8
 2628.6
 2629.4
 2630.2
 2631.0
 2631.8
 2632.6
 2633.4
 2634.2
 2635.0
 2635.8
 2636.6
 2637.4
 2638.2
 2639.0
 2639.8
 2640.6
 2641.4
 2642.2
 2643.0
 2643.8
 2644.6
 2645.4
 2646.2
 2647.0
 2647.8
 2648.6
 2649.4
 2650.2
 2651.0
 2651.8
 2652.6
 2653.4
 2654.2
 2655.0
 2655.8
 2656.6
 2657.4
 2658.2
 2659.0
 2659.8
 2660.6
 2661.4
 2662.2
 2663.0
 2663.8
 2664.6
 2665.4
 2666.2
 2667.0
 2667.8
 2668.6
 2669.4
 2670.2
 2671.0
 2671.8
 2672.6
 2673.4
 2674.2
 2675.0
 2675.8
 2676.6
 2677.4
 2678.2
 2679.0
 2679.8
 2680.6
 2681.4
 2682.2
 2683.0
 2683.8
 2684.6
 2685.4
 2686.2
 2687.0
 2687.8
 2688.6
 2689.4
 2690.2
 2691.0
 2691.8
 2692.6
 2693.4
 2694.2
 2695.0
 2695.8
 2696.6
 2697.4
 2698.2
 2699.0
 2699.8
 2700.6
 2701.4
 2702.2
 2703.0
 2703.8
 2704.6
 2705.4
 2706.2
 2707.0
 2707.8
 2708.6
 2709.4
 2710.2
 2711.0
 2711.8
 2712.6
 2713.4
 2714.2
 2715.0
 2715.8
 2716.6
 2717.4
 2718.2
 2719.0
 2719.8
 2720.6
 2721.4
 2722.2
 2723.0
 2723.8
 2724.6
 2725.4
 2726.2
 2727.0
 2727.8
 2728.6
 2729.4
 2730.2
 2731.0
 2731.8
 2732.6
 2733.4
 2734.2
 2735.0
 2735.8
 2736.6
 2737.4
 2738.2
 2739.0
 2739.8
 2740.6
 2741.4
 2742.2
 2743.0
 2743.8
 2744.6
 2745.4
 2746.2
 2747.0
 2747.8
 2748.6
 2749.4
 2750.2
 2751.0
 2751.8
 2752.6
 2753.4
 2754.2
 2755.0
 2755.8
 2756.6
 2757.4
 2758.2
 2759.0
 2759.8
 2760.6
 2761