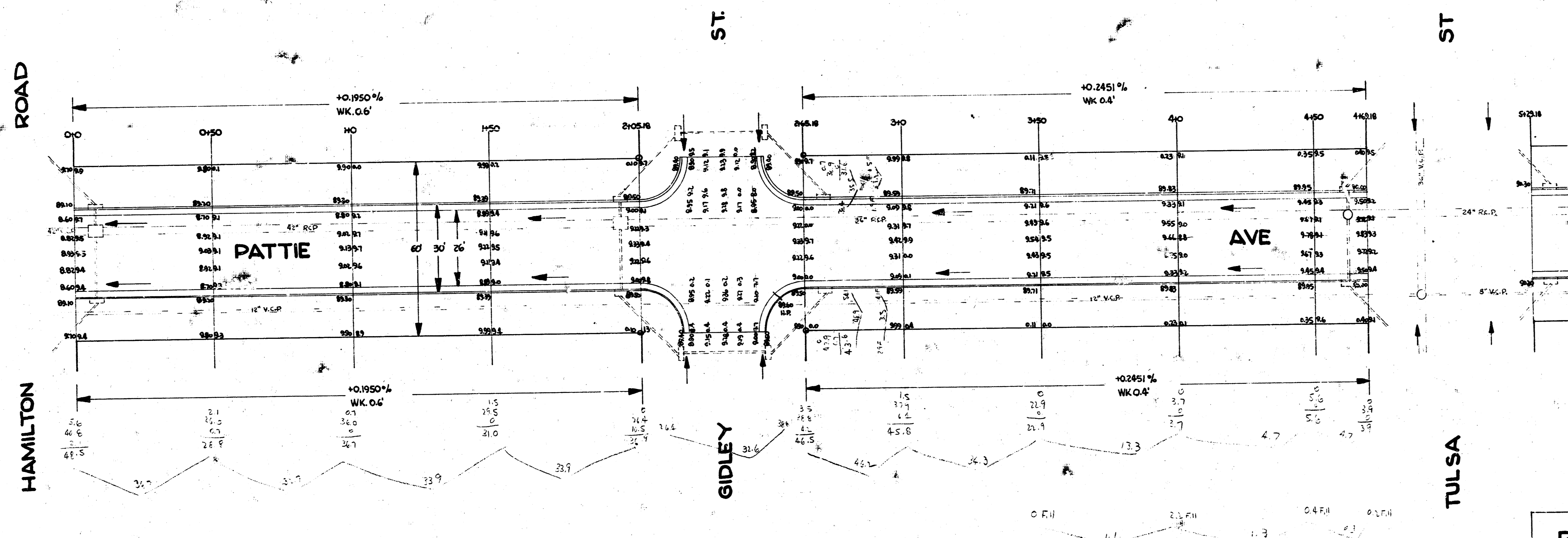


NOTE TO CONTRACTOR & INSPECTOR
 SEE PAGE 3 FOR DETAIL OF STEEL PATTERN AROUND
 REINF. CONC. BOXES ON SWS AT STA 0+07 & STA 1+98

B.M. BOLT IN W.S. HACK BERRY TREE ON N.S. TULSA @ 23' E. OF E.L. WASHINGTON ELEV. 95.01



NOTE
 TULSA INTERSECTION TO BE
 BUILT ON PROJ. NO. C14-11

1/3

PATTIE AVE
 N.L. HAMILTON TO N.L. GARDEN PARK ADD.
26-2-30 ASPH CONC
CITY OF WICHITA, KANSAS
 B.E. SMITH CITY ENGINEER
 APRIL 1954 PROJ. NO. C14-16



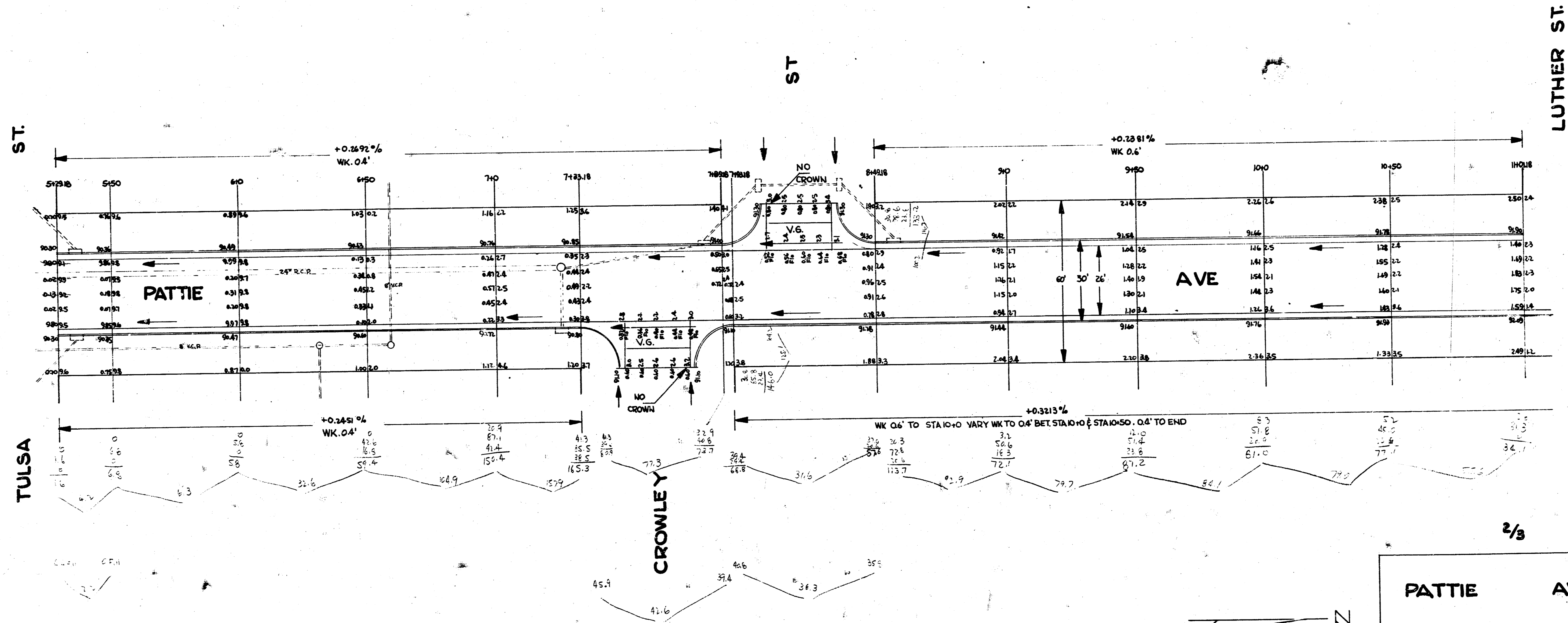
Survey
 Plan
 Exc.
 Checked

14.19.54
 14.19.54
 14.19.54
 14.19.54

B.M. S.W. COR OF PORCH ON HO.N.W. COR TULSA & PATTIE ELEV. 92.47

NOTE TO FIELD ENGINEER

WARP PAVT SO AS TO INSURE 1/2 NORMAL CROWN
BET STA 7+39.18 & STA 8+49.18

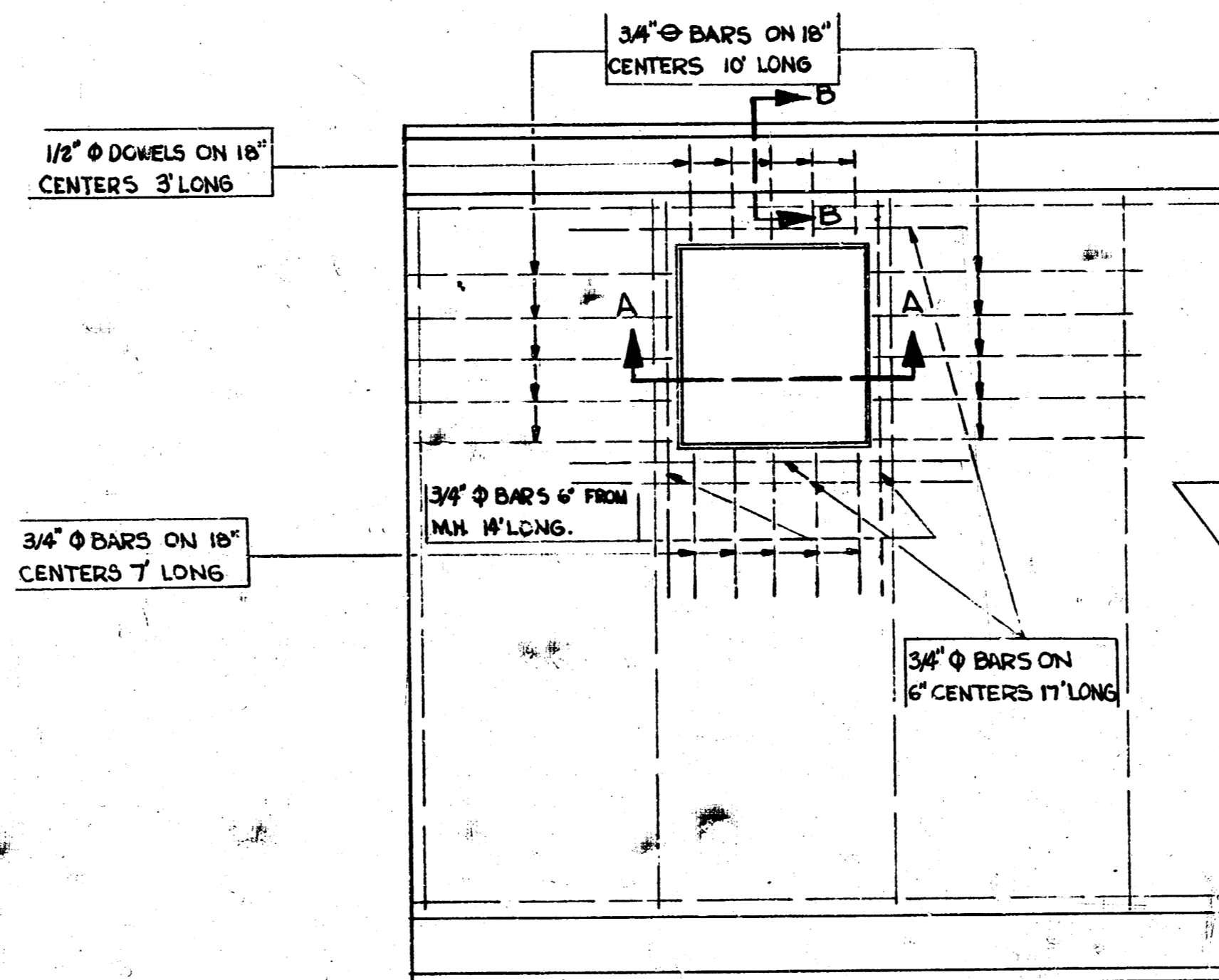
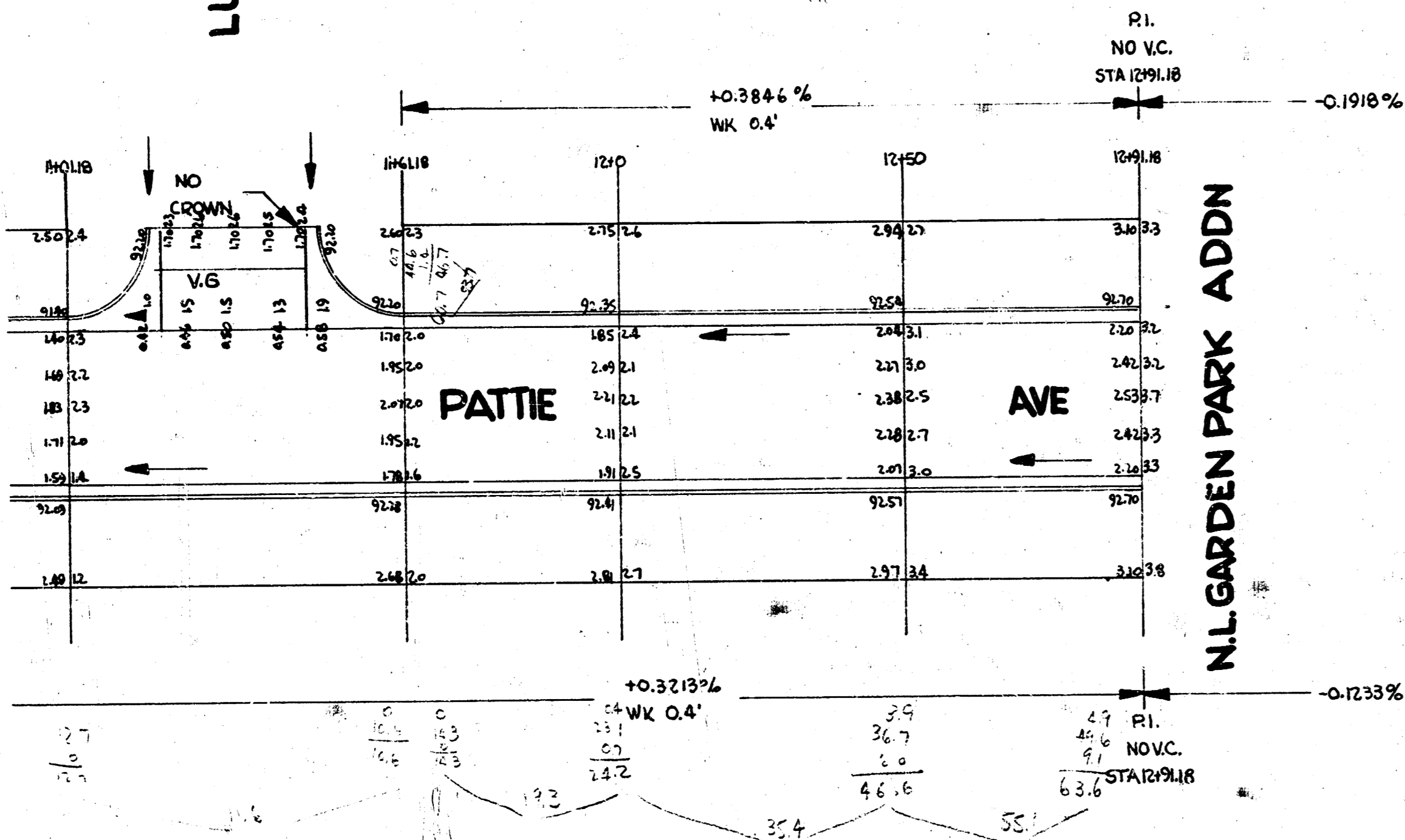


PATTIE AVE

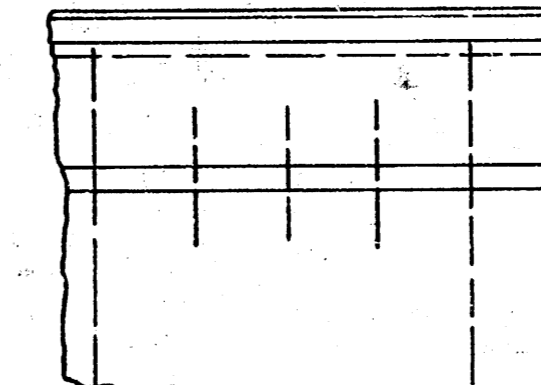
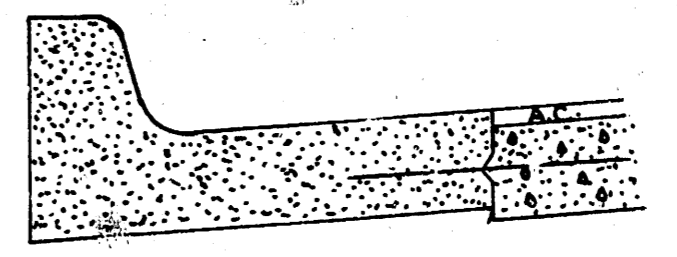
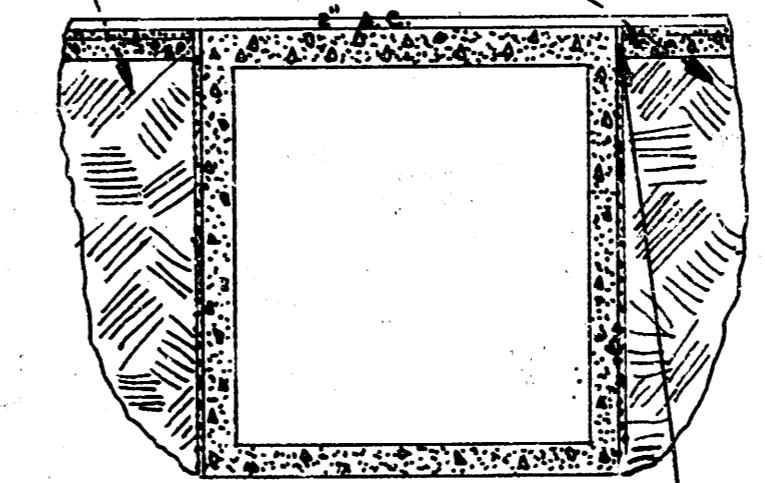
PROJ. NO. C14-16

2/3

LUTHER ST



NOTE TO CONTRACTOR & INSPECTOR
BEFORE PAVING AROUND REINF CONC. M.H. INSURE THAT BACK-FILL OF SAND HAS BEEN ADEQUATELY FLUSHED & VIBRATED



NOTE
STEEL DETAIL AROUND REINF CONC. M.H. AT STA 071 & STA H98.

NOTE TO INSPECTOR
EQUALLY SPACE 3 - $3/4" \phi$ BARS BET NORMAL 9' SPACING OVER SWS BET STA 071 & STA H98. LENGTH WILL VARY WITH VARYING PIPE & DITCH SIZES.

3/3

PATTIE AVE

PROJ. NO. C14-16