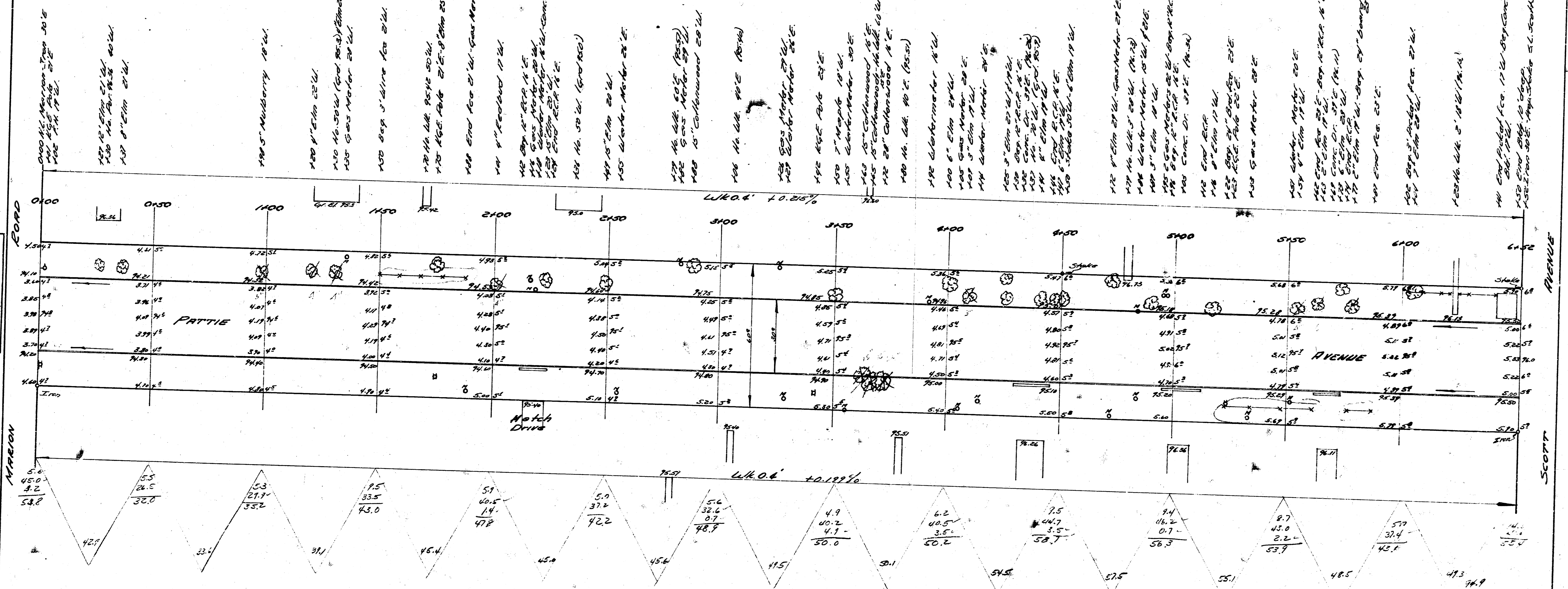


8.M. 1921 S. E. Cor. Conc. Pav. No. N.W. Marion & Laura
 8.M. 1934 West on Labor Blvd. S. E. Cor. Conc. Pav. No. W. Marion & Marion
 8.M. 1933 N.W. Cor. Conc. Pav. No. N.E. Route of South
 8.M. 1935 5th Glens Ch. Wk. N. E. Route of Pauline

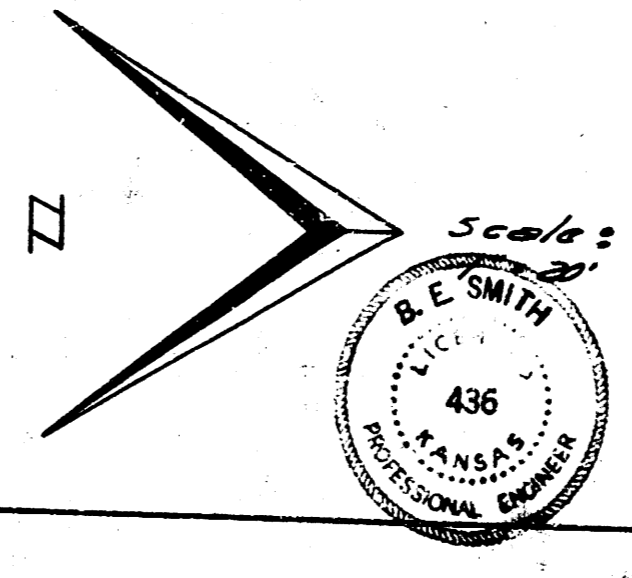


NOTE - Baseline & Profile
 Cb. line on Route S. of Marion is S.E.
 of Cb. line N. of Marion - No. 3 - Conc. Pav.

Total Excav.

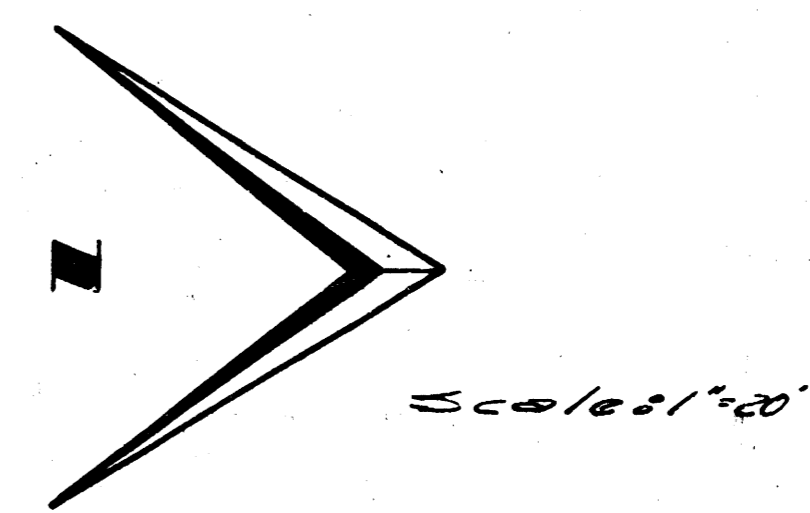
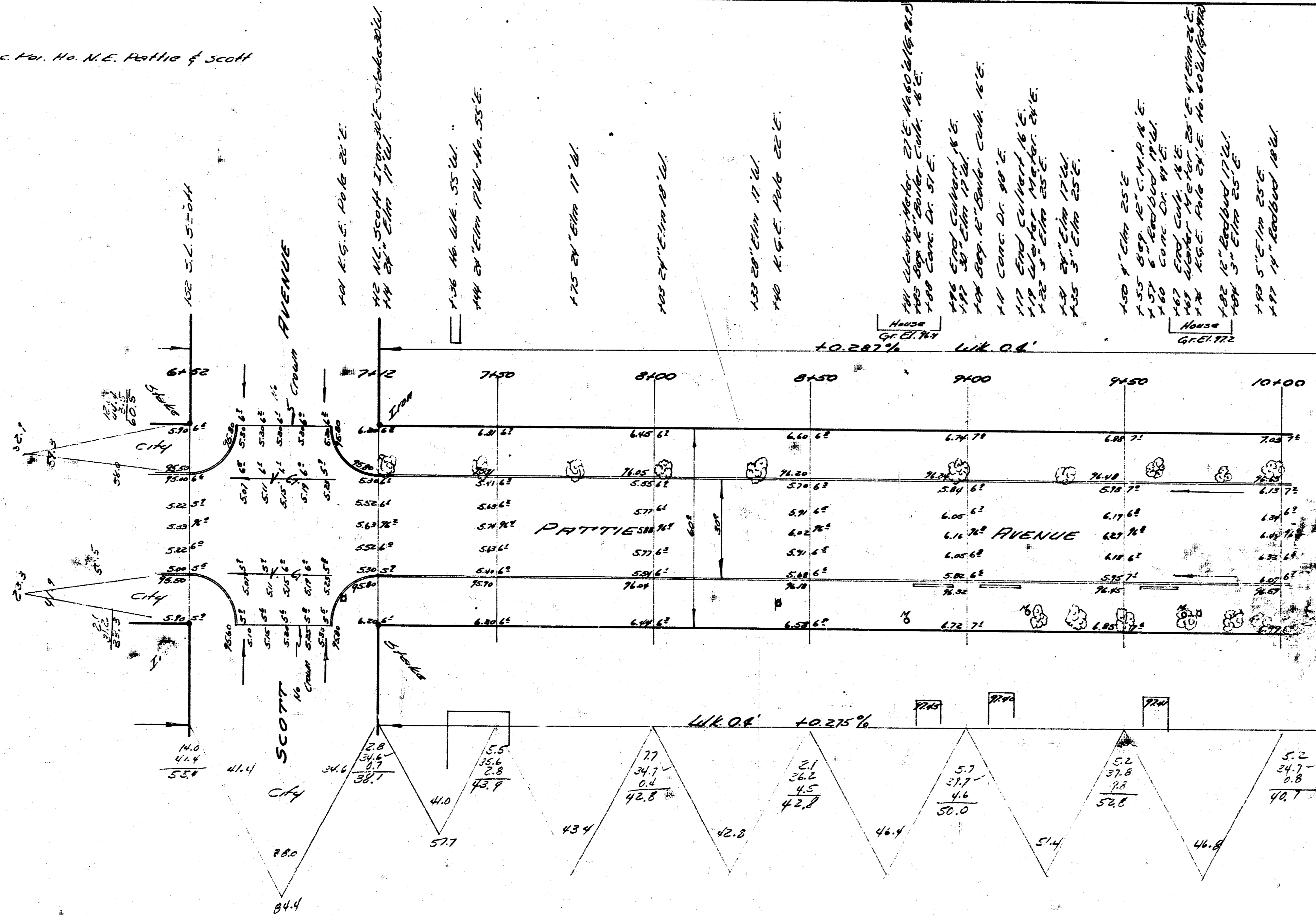
City	Prop
Cut Fill	Cut Fill
1404	2031
141	2071
154.7 cu. yds.	2078.2 cu. yds.

Note to Field Engineer:
 Check & Report Size
 & Number of trees
 Removed.



PATTIE AVENUE
 N.W. MARION to S.L. PAWNEE
 30' Conc. & Cb.
 City of Wichita, Kans.
 B.E. Smith City Engineer
 July, 1935 Proj. No. C15-39

B.M. 7863 N.W. Cor. Conc. Pav. No. N.E. Part of Scott



PATTIE AVENUE
②/3

