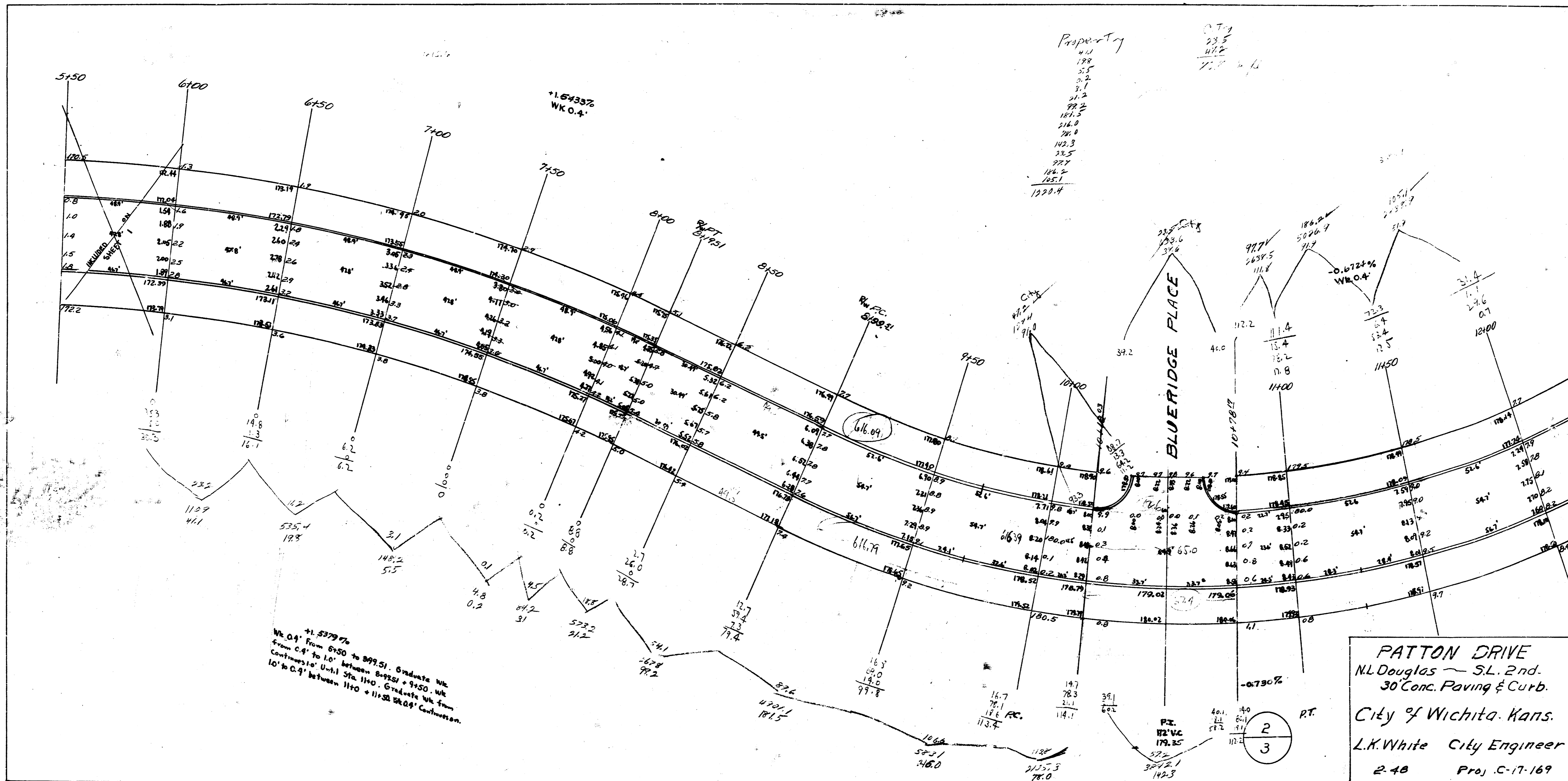


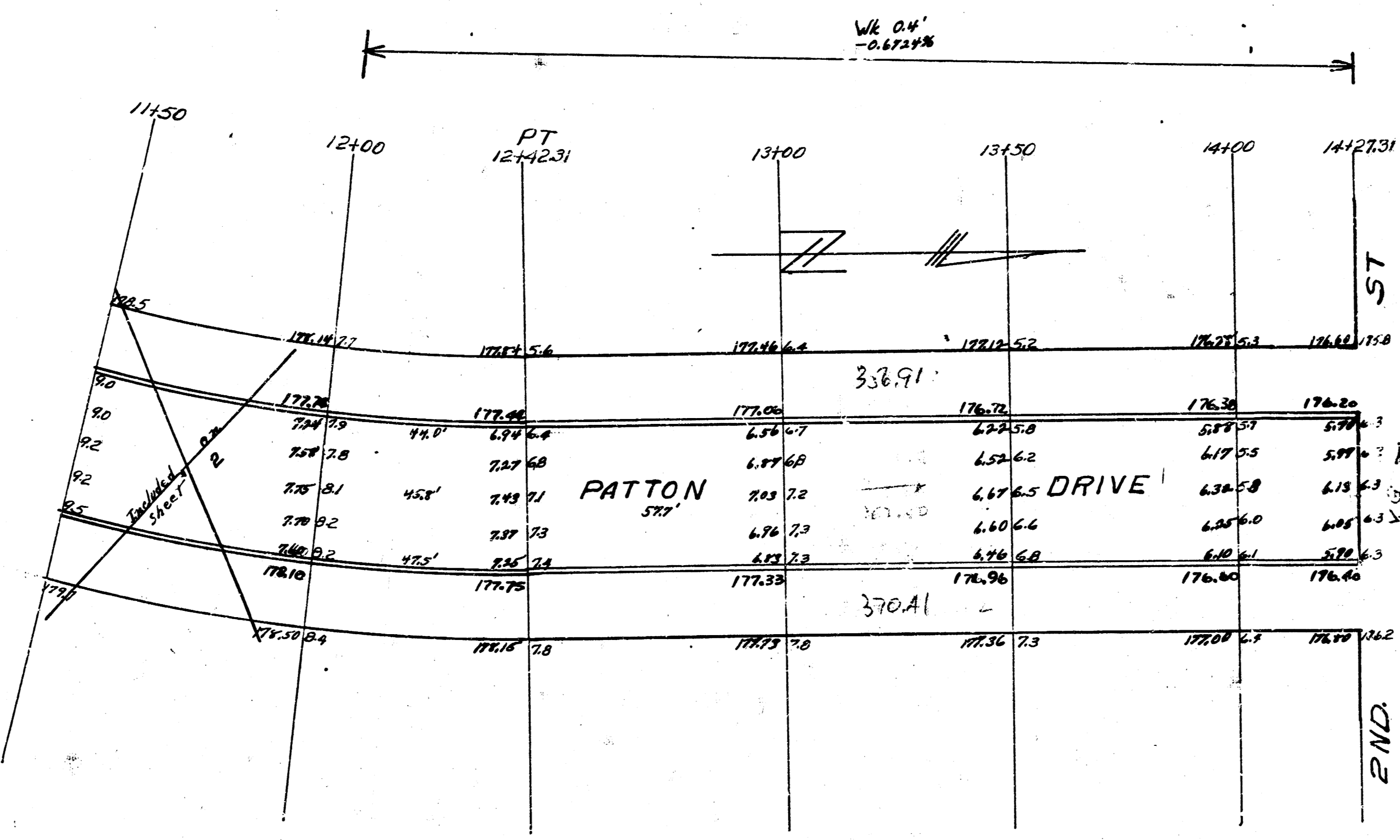
B.M. 168.12 TOP IRON S.I. PARKHOLLOW W.L. PATTON DRIVE
 B.M. 181.80 TOP IRON N.E. Cor. PARKHOLLOW ADDN.
 STATIONING IS ON W.R.L. - GRADES SET ON CURB LINE DIST

City	Prop.
69.6	126.7
29.5	101.1
12.1	37.8
111.2	25.5
	40.2
	61.1
	45.1
	56.4
	48.7
	45.7
	46.9
	216.6

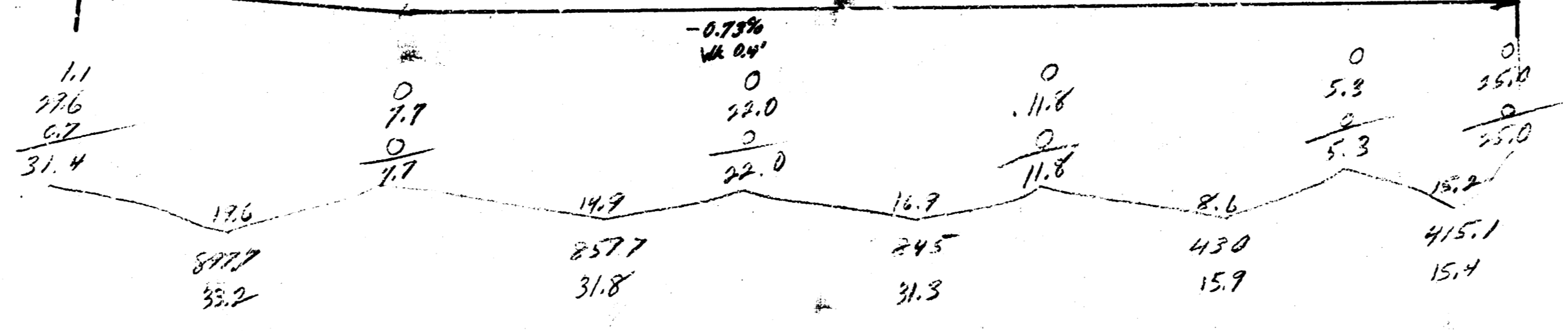
Note: Install drain pipe under intersection of Douglas & Patton Dr. N.E. Douglas. Connect conc. pvt on Patton Dr. to pvt on Douglas with asphalt

PATTON DRIVE
 N.E. Douglas — S.L. 2 nd.
 30' Conc. Paving & Curb
 City of Wichita Kans.
 L. K. WHITE City Engineer
 2-48 Proj C-17-169





Property
 33.2
 31.8
 31.3
 15.7
 15.4
 125.6



3
 3

FATTON DRIVE
 N.L. Douglas ~ S.L. 2ND.
 30' Conc. Paving & Curb
 City of Wichita Kans.
 L.H. White - City Engineer
 248 Proj. CIT-169

4 13 3 11)