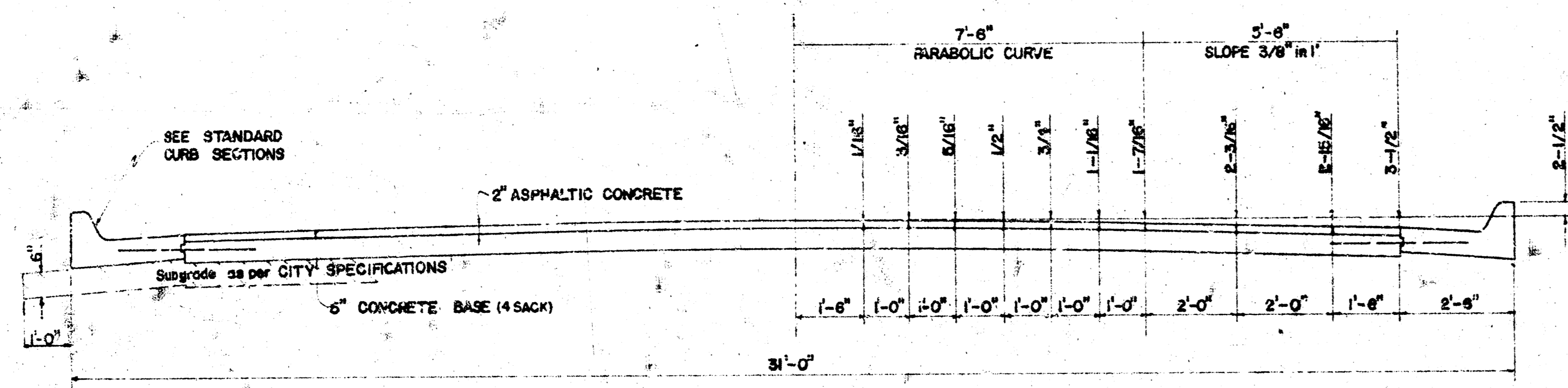
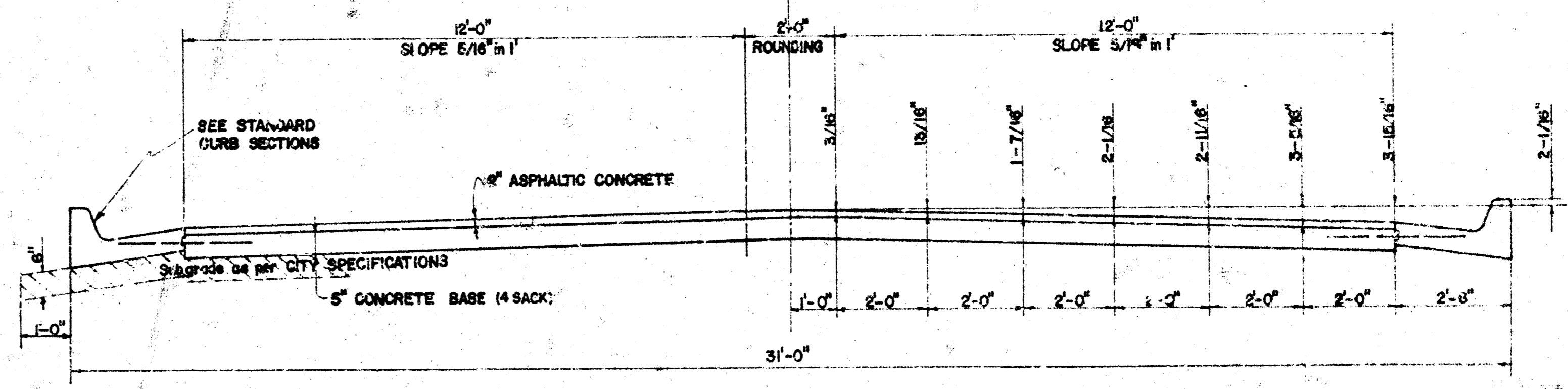


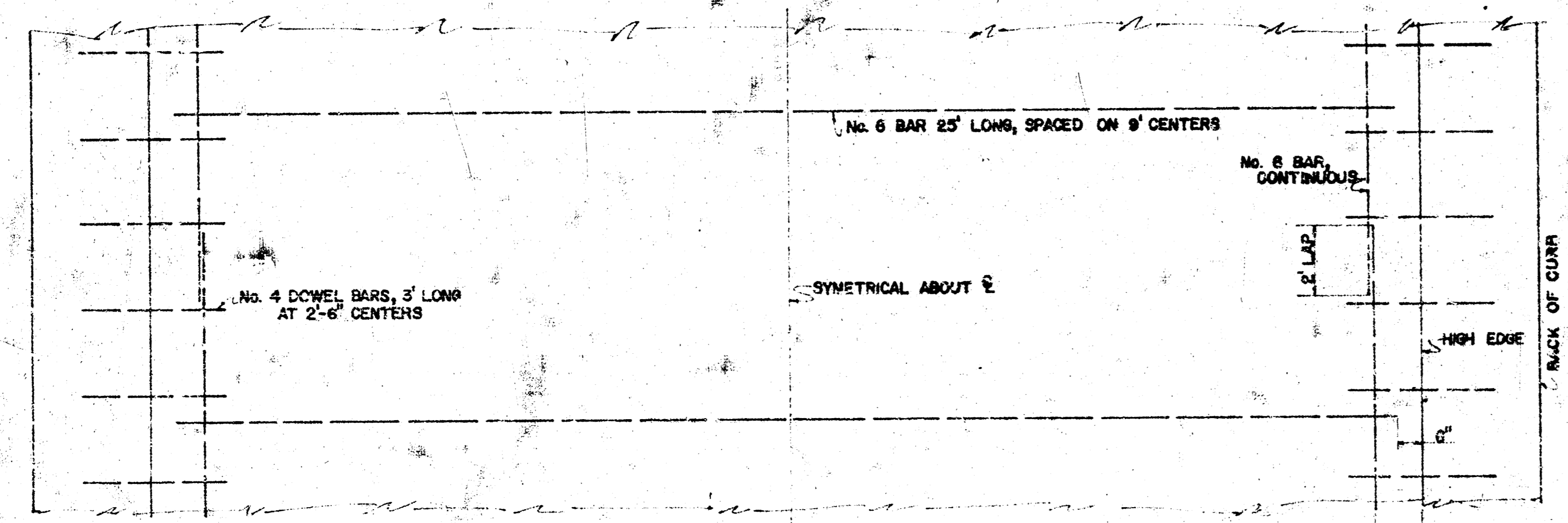
PAULA AVE.  
 NL HENDRYX AVE. TO SL UNIVERSITY AVE.  
 TYPICAL SECTIONS of 30' ASPHALTIC CONCRETE PAVEMENT



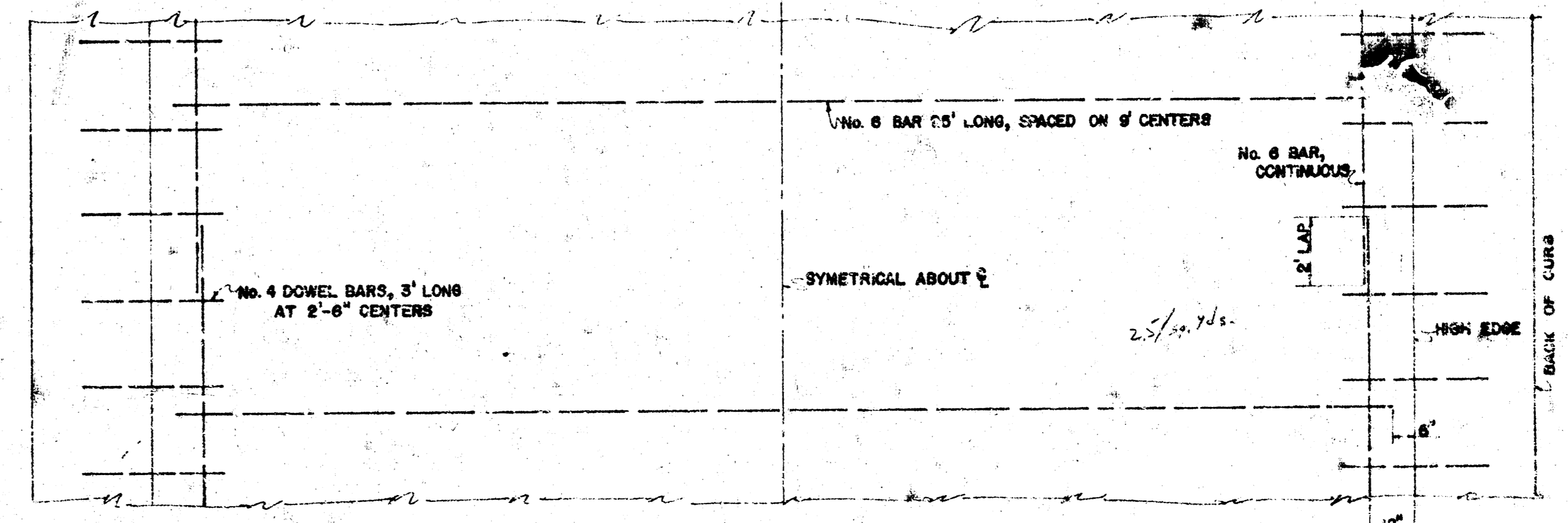
TYPICAL SECTION WITH STANDARD CROWN



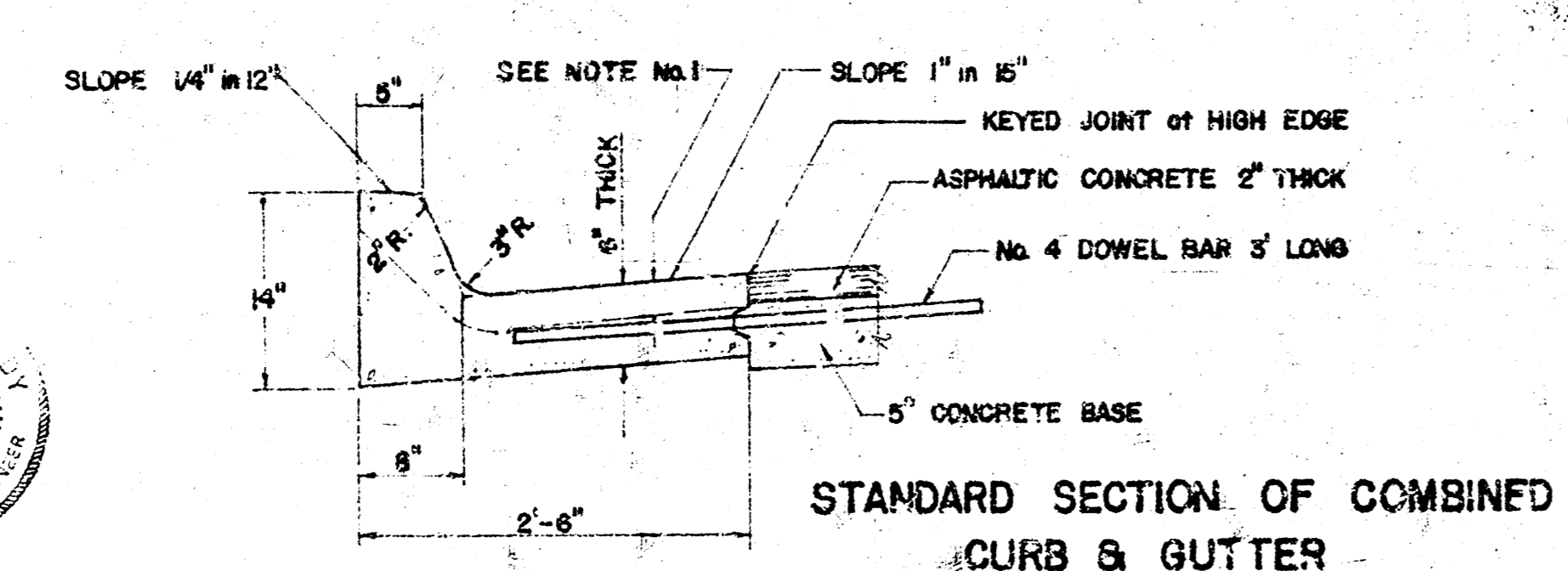
TYPICAL SECTION WITH ALTERNATE CROWN



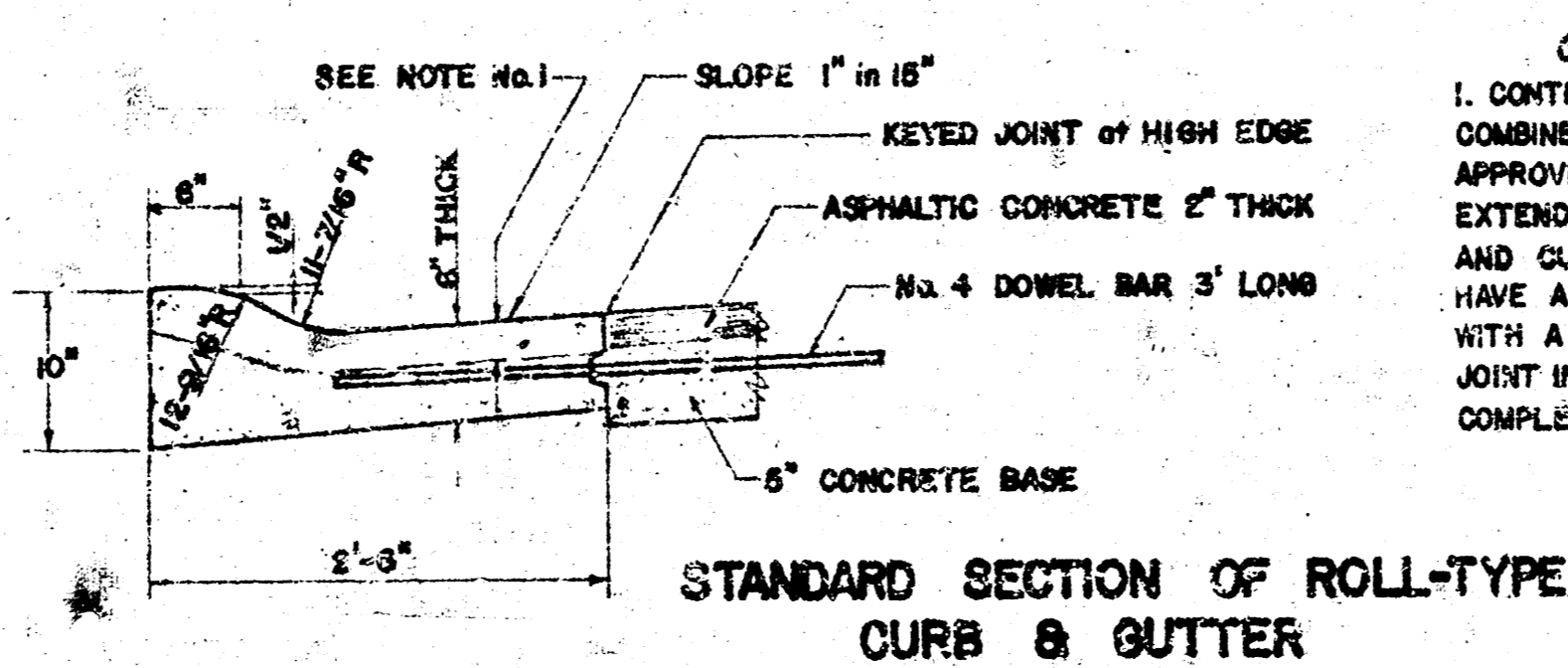
STEEL PATTERN



STEEL PATTERN



STANDARD SECTION OF COMBINED CURB & GUTTER



STANDARD SECTION OF ROLL-TYPE CURB & GUTTER

GENERAL NOTES  
 1. CONTRACTION JOINTS MAY BE CONSTRUCTED IN COMBINED CURB AND GUTTER BY SAWING WITH AN APPROVED CONCRETE SAW. THE SAW CUT SHALL EXTEND 2-1/2" BELOW THE SURFACE OF THE GUTTER AND CURB. SAWED CONTRACTION JOINTS SHALL HAVE A MAXIMUM SPACING OF 10' AND BE FILLED WITH A SPECIFIED JOINT FILLER, SUCH THAT THE JOINT IN THE GUTTER SECTION WILL BE COMPLETELY FILLED.

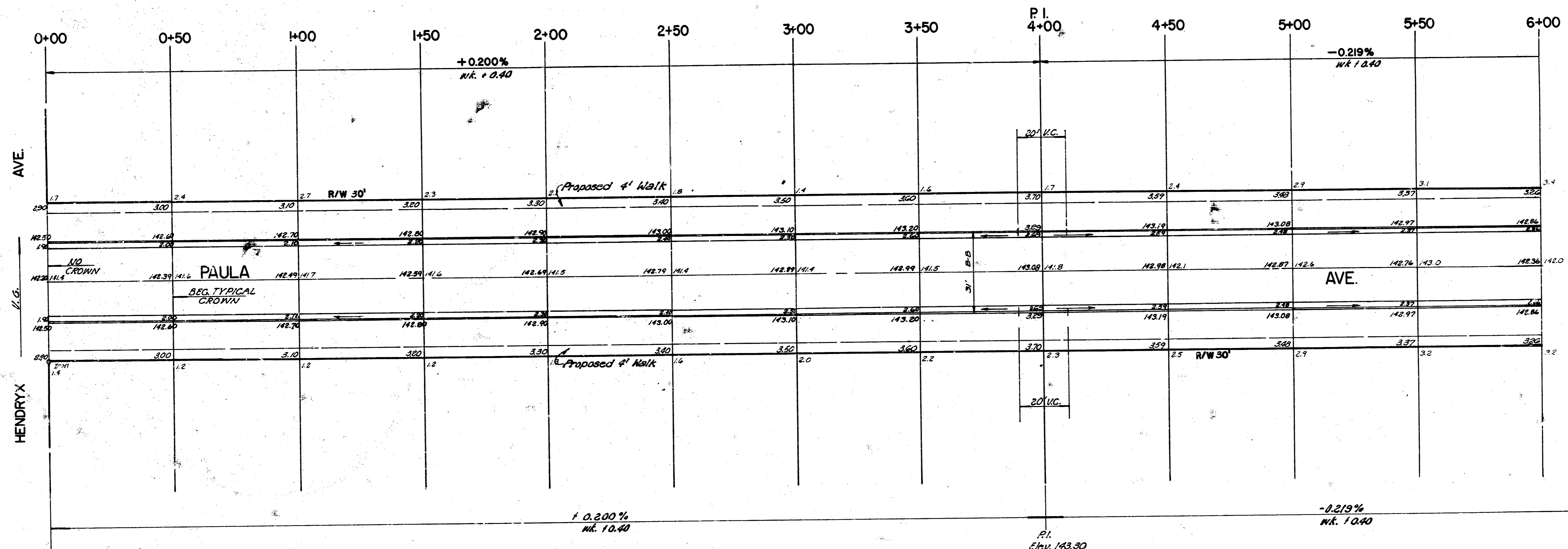


CITY OF WICHITA, KANSAS  
 Department of Public Works - Engineering Division  
 R. W. Linn City Engineer  
 Date: SEPT. 1972 Project No. DAKS588018

Survey  
 Plan Accuracy  
 Etc.  
 (CHICAGO)

B.M. 141.55 CITY STD. S.W. U.S. 54 & TYLER.  
 B.M. 143.06 R.R. SPIKE E.S. RP. N.W. BELVIEW & TYLER.  
 B.M. 143.32 R.R. SPIKE N.W. SIDE TEL. POLE & BYRON & 20'E. TYLER.  
 B.M. 139.20 R.R. SPIKE E.S. RP. S.W. UNIVERSITY & TYLER.  
 B.M. 141.00 5" N.W. COR. DRWY. 450 S. EVERGREEN.  
 B.M. 144.54 6" N.W. COR. STEP AT 520 EVERGREEN.

N  
 SCALE 1" = 20'



"EARTHWORK QUANTITIES"

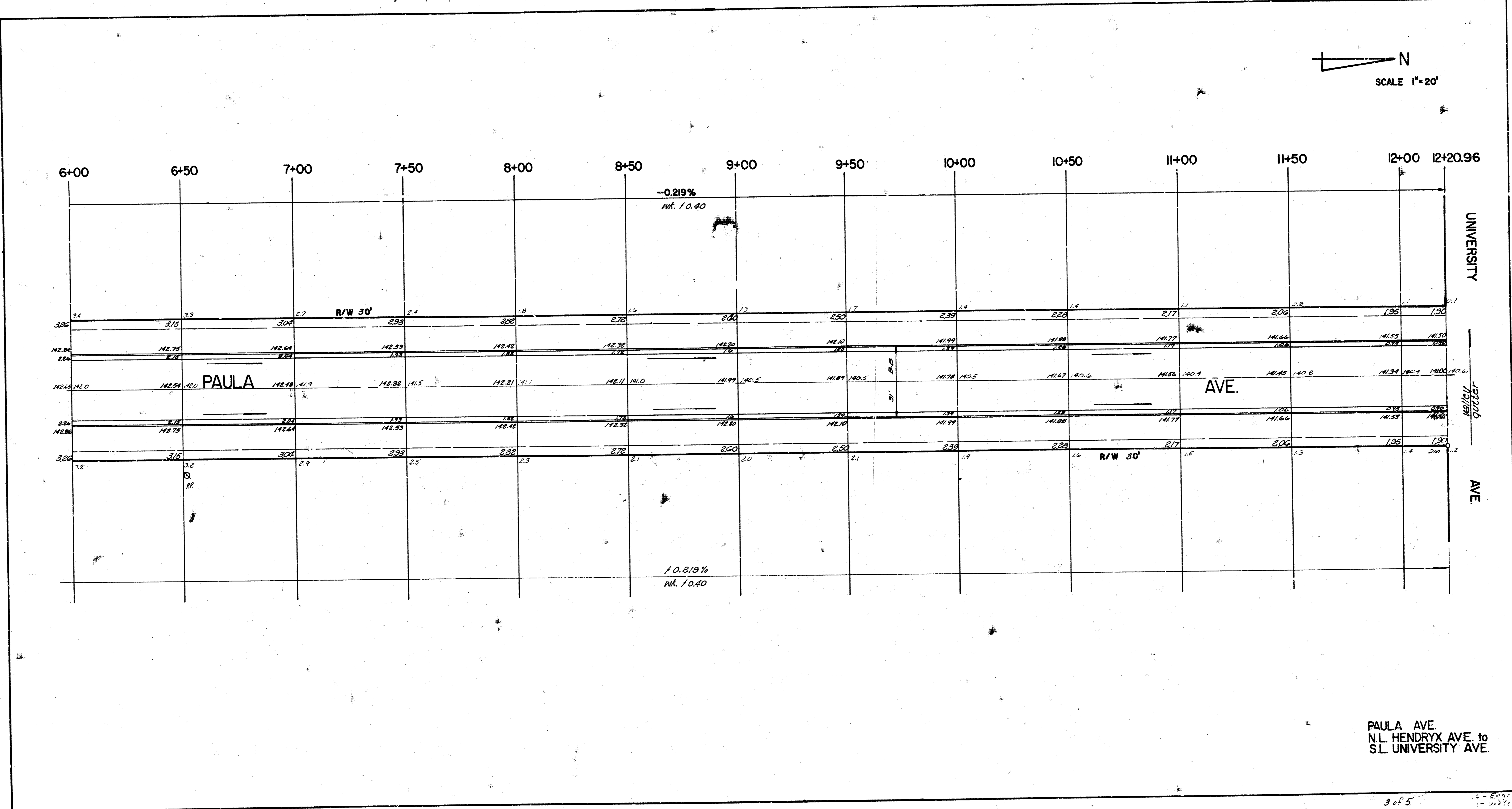
EXCAVATION	COMPACTED FILL
3249 cy.	441.8 cy.
+10% 32.5	+10% 44.1
3574 cy.	485.9 cy.

S.O.M.  
 746.1  
 74.6  
 820.7 cy.

NOTE: Excess Fill Material from University Ave. to be stock piled on this project for Compacted & Loose Fill work necessary to complete this project. Prop. Owner to have any dirt not used on project. Contractor to contact prop. owner about disposal of Material.

PAULA AVE.  
 N.L. Hendryx Ave. to S.L. University Ave.  
 R.W. Linn City Engineer  
 City of Wichita  
 PR. NO. DAKS 568018 Date

N  
SCALE 1"=20'



PAULA AVE.  
N.L. HENDRYX AVE. to  
S.L. UNIVERSITY AVE.