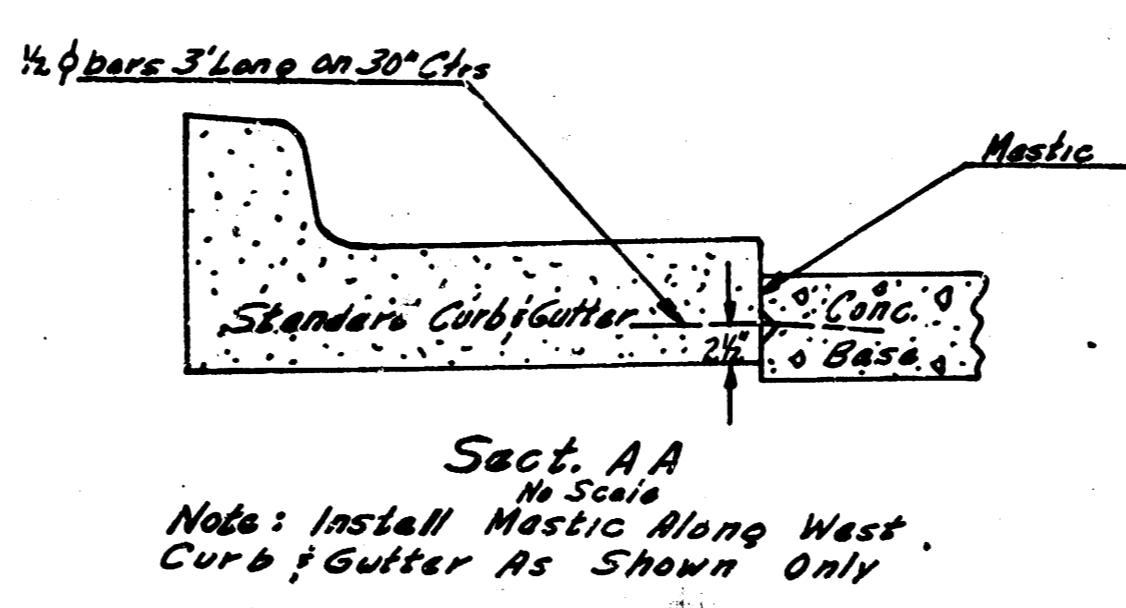
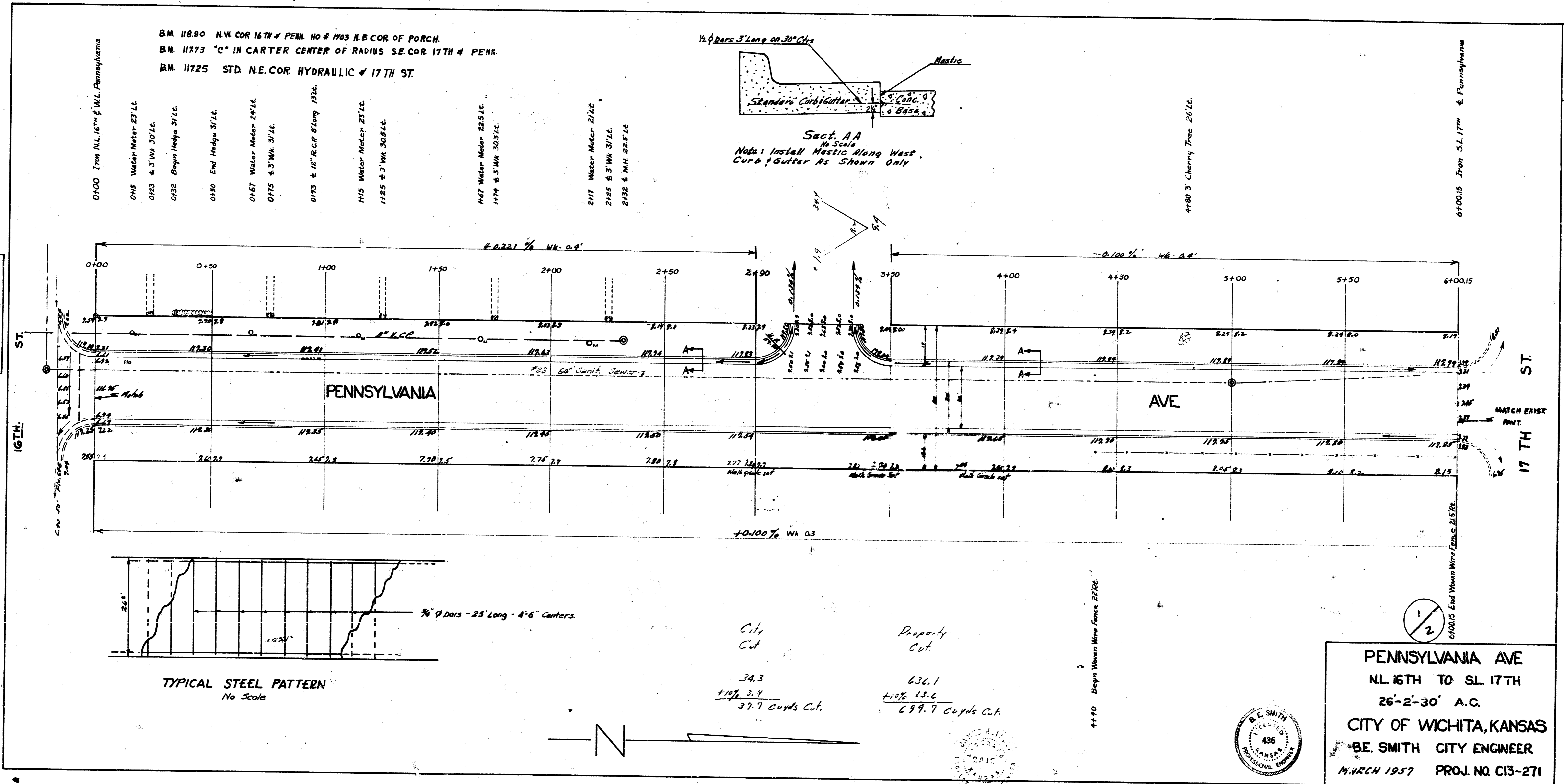
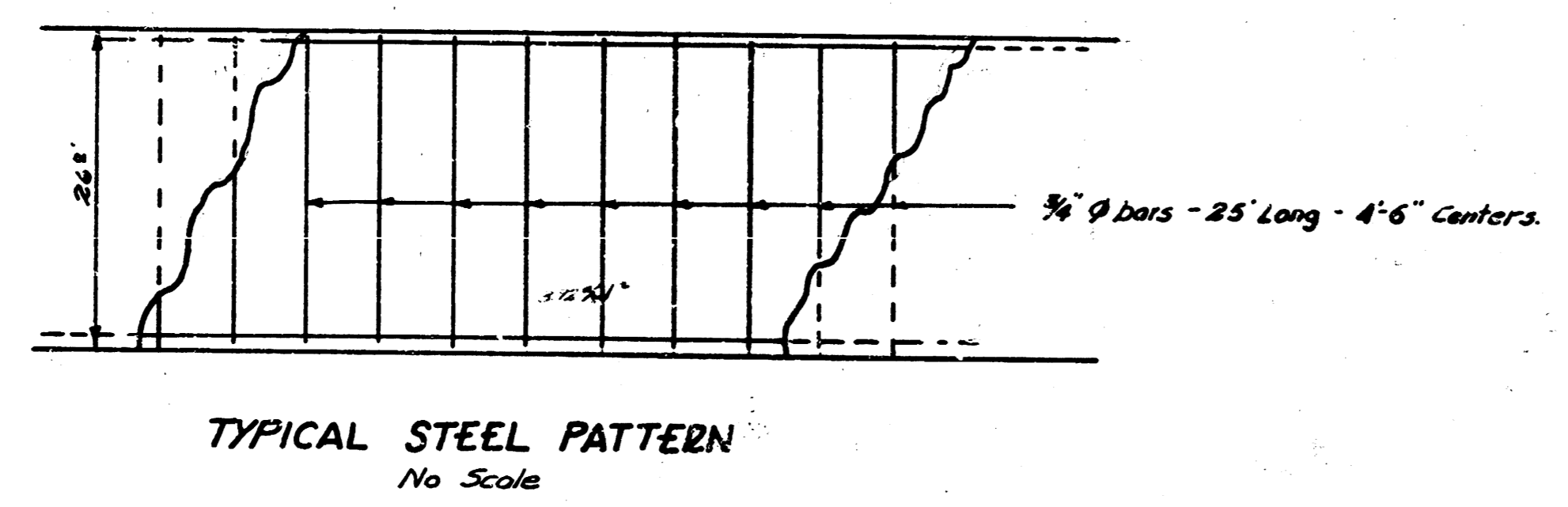


Survey 3 A.K.
 Plan
 Checked
 B.E. SMITH
 436
 PROFESSIONAL ENGINEER



- BM 11880 N.V. COR 16TH & PENN. NO. 4 1703 N.E. COR OF PORCH.
- BM 11773 "C" IN CARTER CENTER OF RADIUS S.E. COR 17TH & PENN.
- BM 11725 STD. N.E. COR HYDRAULIC & 17TH ST.
- 0100 From N.L. 16TH & W.L. Pennsylvania
- 0105 Water Meter 23 1/4"
- 0103 & 3" W.V. 30' L.C.
- 0102 Begin Hedge 31/4"
- 0100 End Hedge 31/4"
- 0107 Water Meter 24 1/4"
- 0105 & 3" W.V. 31/4"
- 0103 & 12" R.C.P. 81/2 Long 12 1/4"
- 1105 Water Meter 25 1/4"
- 1125 & 3" W.V. 30' S.E.C.
- 1107 Water Meter 22 5/8"
- 1174 & 3" W.V. 30' S.E.C.
- 2111 Water Meter 21 1/2"
- 2105 & 3" W.V. 31/4"
- 2102 & 3" W.V. 22 5/8"
- 4180 3" Cherry Tree 26' L.C.
- 610015 Iron S.L. 17th & Pennsylvania



City Cut: 34.3
 +10% 3.7
 37.7 Cords Cut.

Property Cut: 636.1
 +10% 63.6
 699.7 Cords Cut.

PENNSYLVANIA AVE
 N.L. 16TH TO S.L. 17TH
 26'-2'-30" A.C.
 CITY OF WICHITA, KANSAS
 B.E. SMITH CITY ENGINEER
 MARCH 1957 PROJ. NO. C13-271

