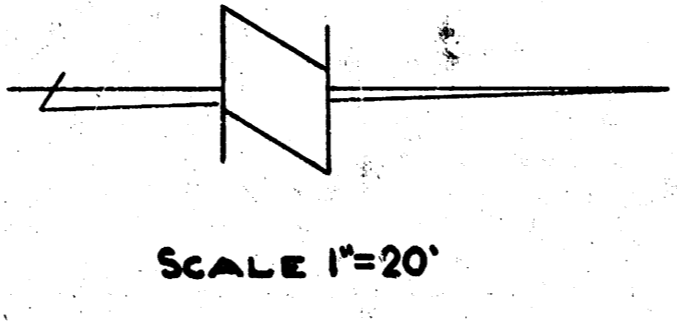
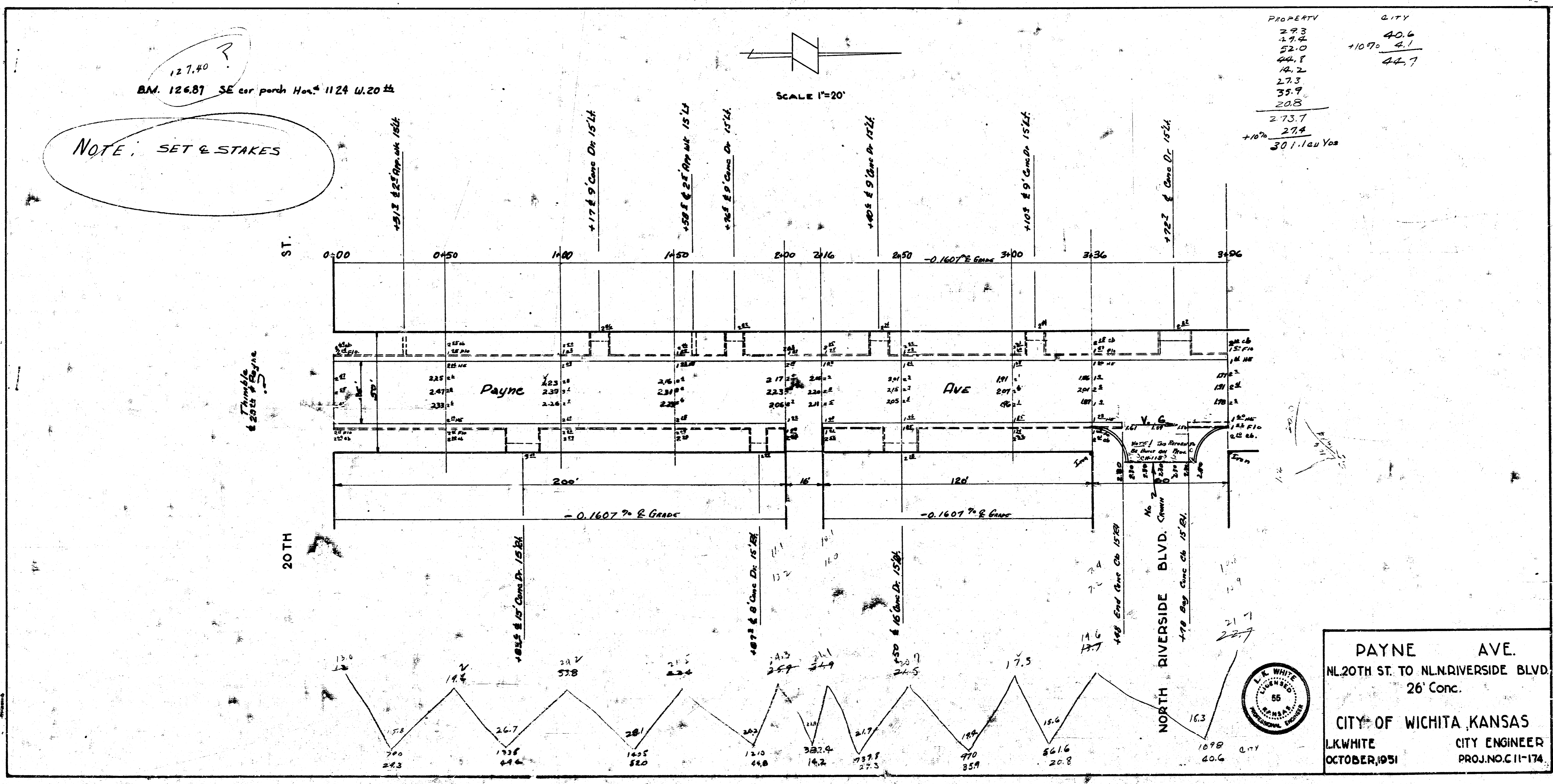


127.40 ?
 B.M. 126.87 SE cor. porch Hous. 1124 W. 20th St.
 NOTE: SET & STAKES

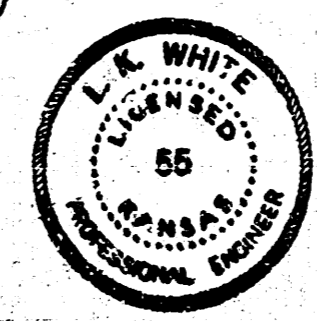


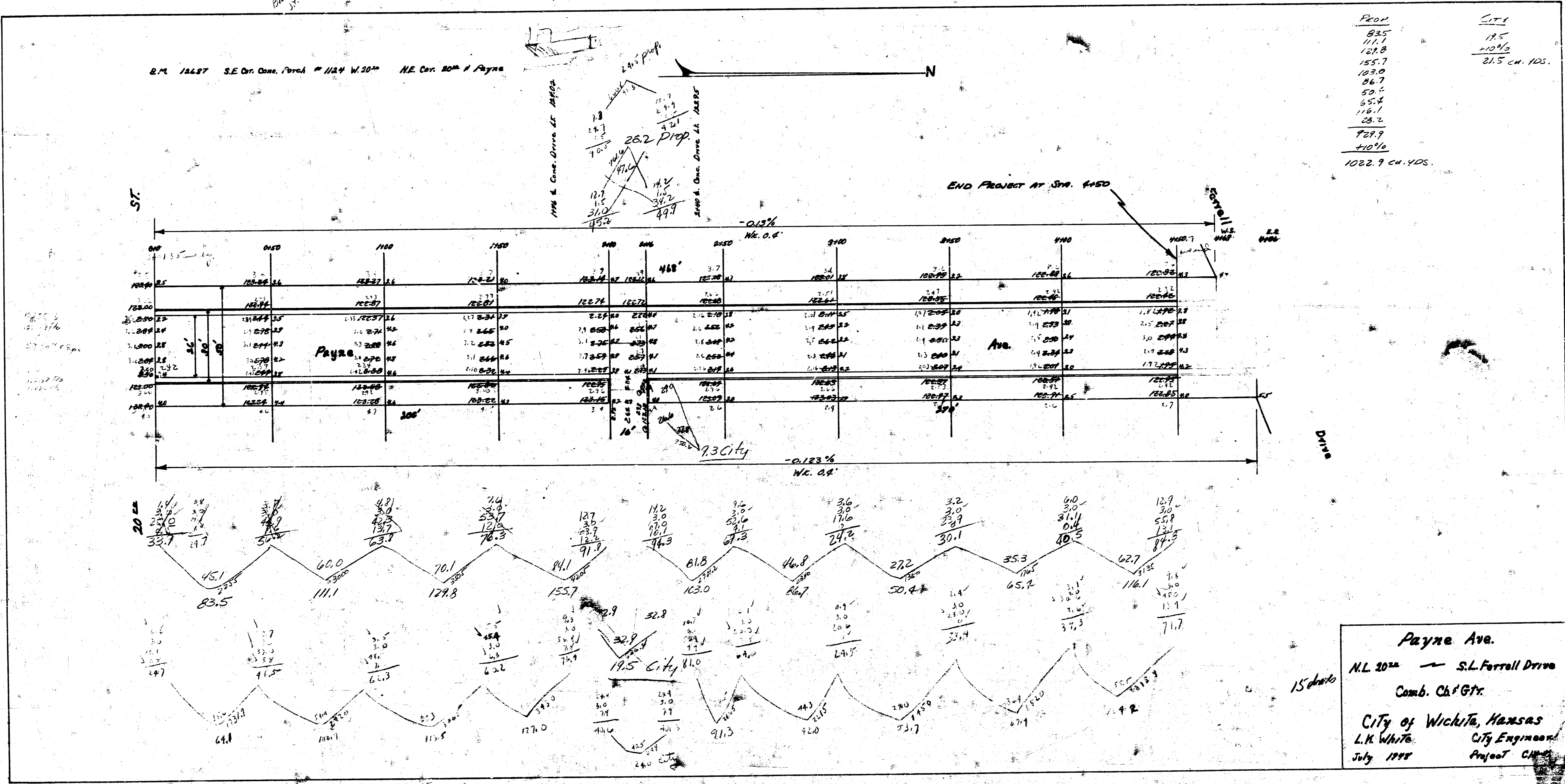
PROPERTY	CITY
293	406
294	41
520	1070
441	447
442	
273	
359	
208	
273.7	
+10% 279	
301.16u	Yon

L.S. WHITE
 CIVIL ENGINEER
 55
 1000 S. W. 10th St.
 WICHITA, KANSAS

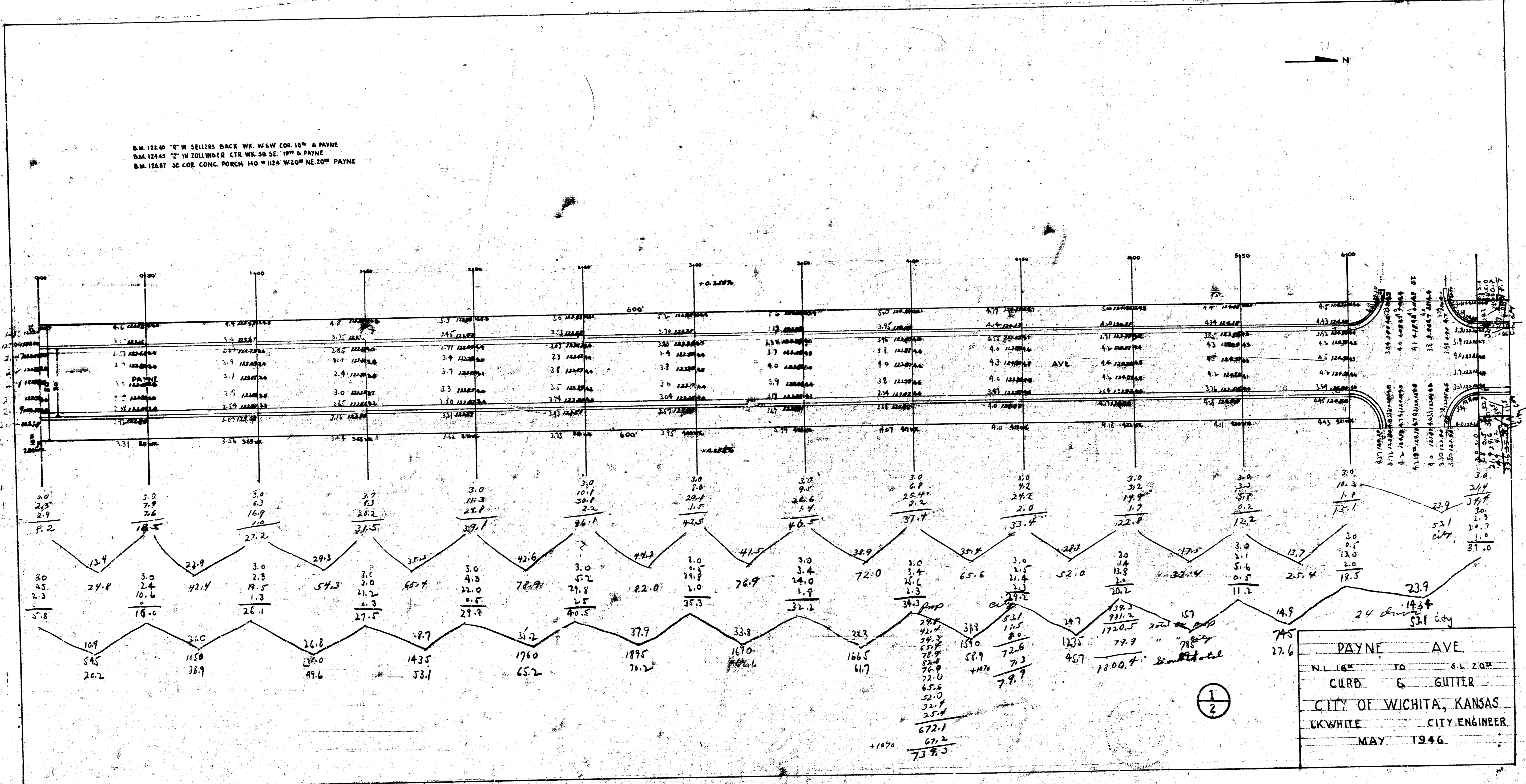


PAYNE AVE.
 NL 20TH ST. TO NL RIVERSIDE BLVD.
 26' Conc.
 CITY OF WICHITA, KANSAS
 L.K. WHITE CITY ENGINEER
 OCTOBER, 1951 PROJ. NO. C-11-174





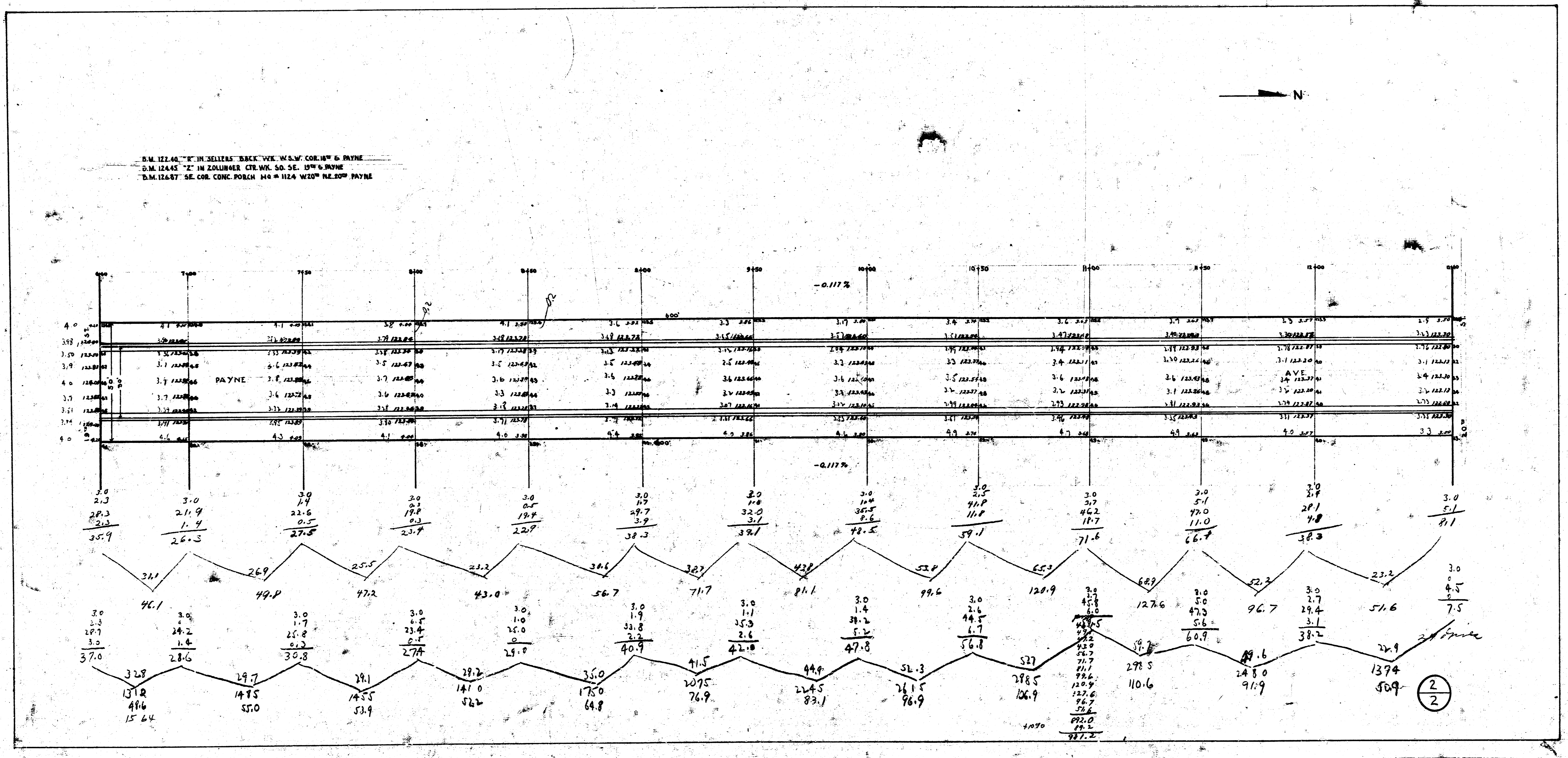
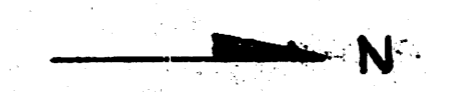
B.M. 11240 14" W SELLERS BACK WY. WSW COR. 15th & PAYNE
 B.M. 11245 7" W ZOLLINGER CRT. WK. SE. 15th & PAYNE
 B.M. 11287 SE. COR. CONC. PORCH 140° 1124 W 120° NE. 20th PAYNE



PAYNE AVE
 S.W. 1/4 TO S.E. 20th
 CURB & GUTTER
 CITY OF WICHITA, KANSAS
 CITY ENGINEER
 MAY 1946

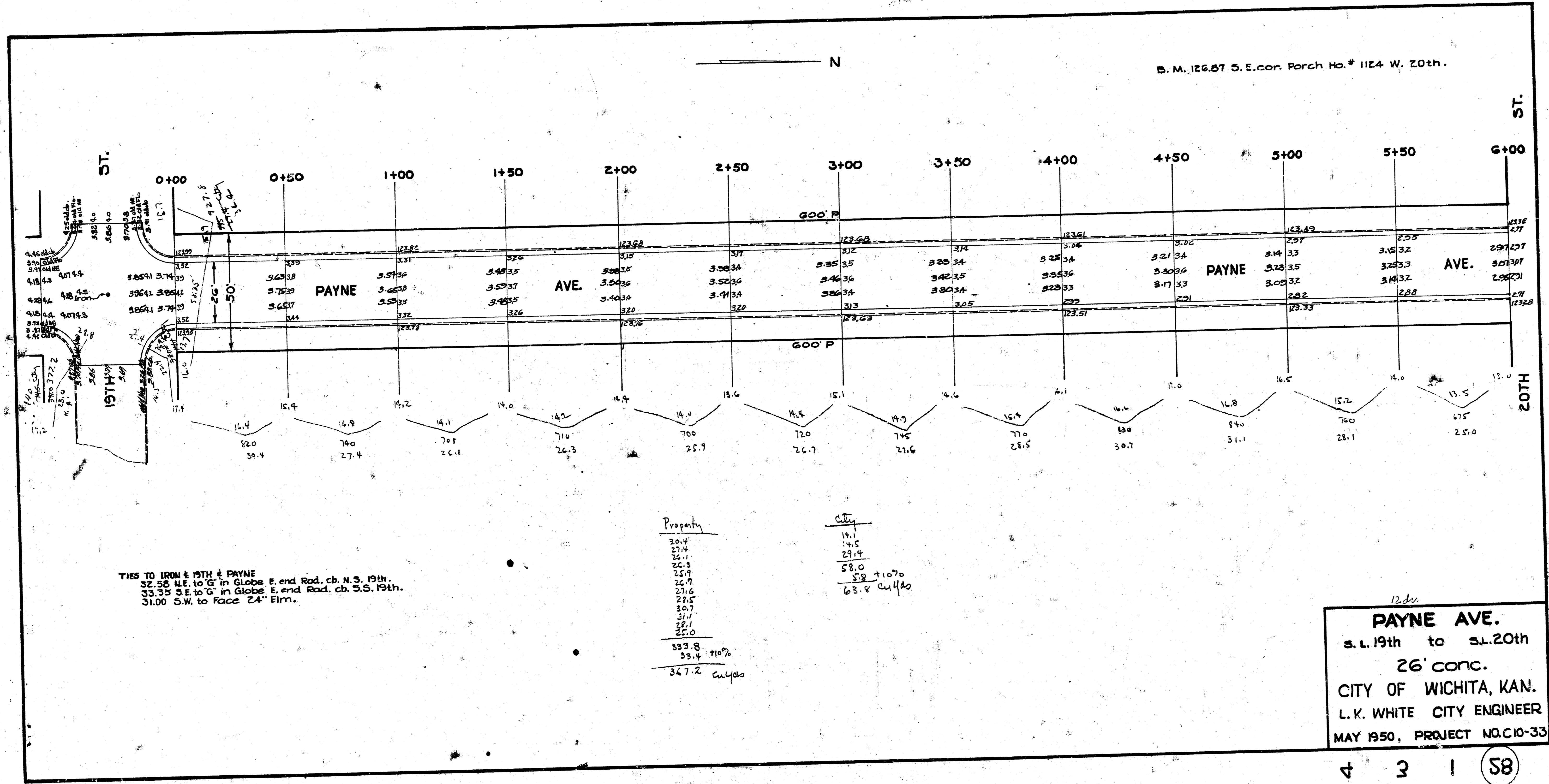
1
2

S.M. 121.44 "C" IN SOLLERS' BRICK W.K. W.S.W. COR. W & PAYNE
 S.M. 124.45 "Z" IN ZOLLNER CTR. W.K. SO. SE. 1976 PAYNE
 S.M. 124.87 SE. COR. CONC. POBEN 140 W 1124 W 1000 NE. 2000 PAYNE



Book # 52
 27-38

D. M. 126.87 S. E. cor. Parch Ho. # 1124 W. 20th.



TIES TO IRON & 19TH & PAYNE
 32.58 N.E. to 'G' in Globe E. end Rod. cb. N.S. 19th.
 33.35 S.E. to 'G' in Globe E. end Rod. cb. S.S. 19th.
 31.00 S.W. to face 24" Elm.

Property	City
30.4	16.1
27.4	14.5
24.1	29.4
26.3	58.0
25.9	58.0 + 1070
26.7	63.8 curbs
27.6	
28.5	
30.7	
31.7	
32.1	
35.0	
333.8	
33.4	
347.2	

PAYNE AVE.
 S.L. 19th to S.L. 20th
 26' conc.
 CITY OF WICHITA, KAN.
 L. K. WHITE CITY ENGINEER
 MAY 1950, PROJECT NO. C10-33

4 3 1 (58)