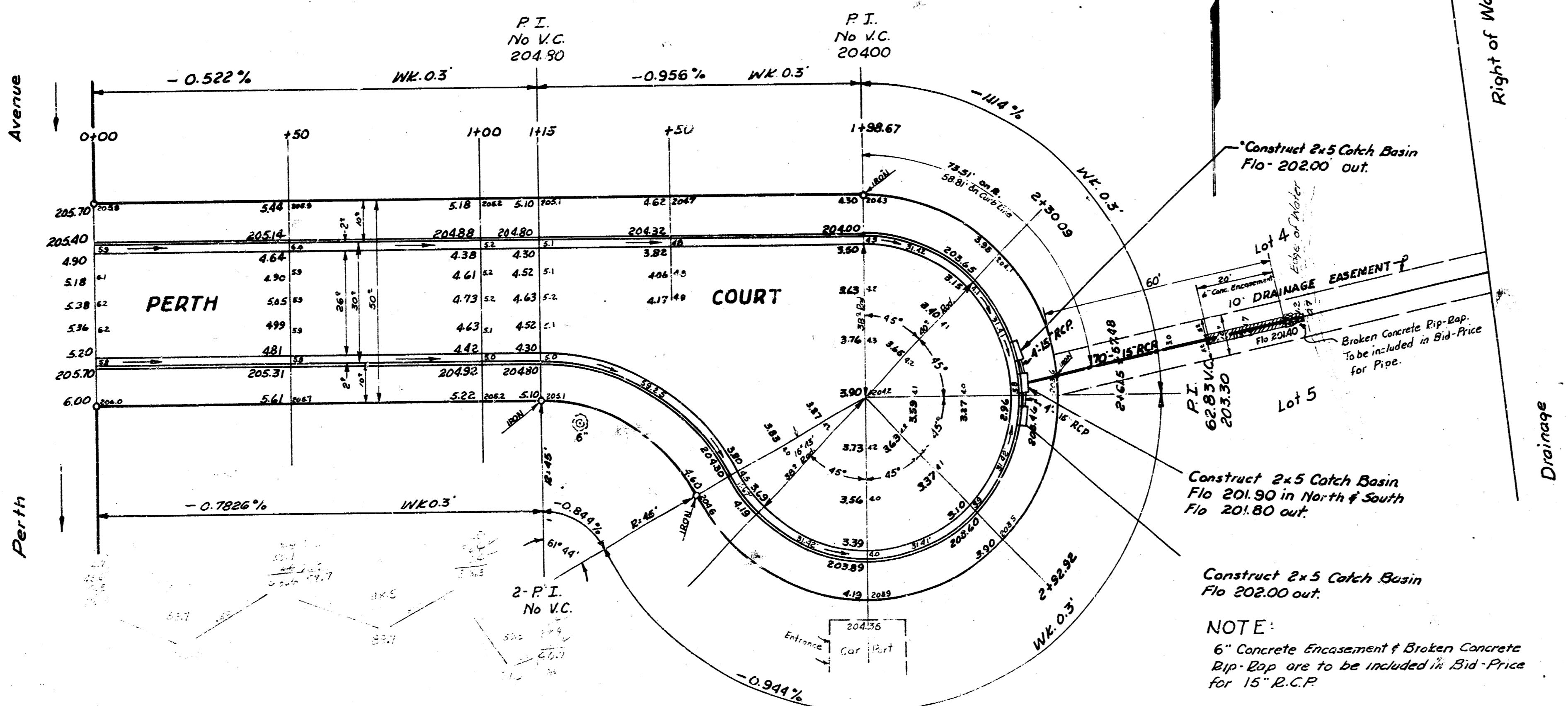


B.M. - 208.67 "T" in Troy Fire Hydrant SW cor. 13th & Perth.
 B.M. - 204.45 "R" in Ritchie 150' N. of NL Polo & Wcb. Perth.
 B.M. - 205.17 "R" in Ritchie S. cb. Polo, W.L. M^cEwens 2nd Addn.
 STATIONING ON NORTH CURB.

Surveyed by
 J. H. Green
 1911



NOTE:
 6" Concrete Encasement & Broken Concrete
 Dip-Dop are to be included in Bid-Price
 for 15" R.C.P.

PERTH COURT
 EL Perth to & Incl. Cul-de-Sac.
 26-2-30AC
 CITY OF WICHITA, KANSAS
 B.E. SMITH CITY ENGINEER
 MAY 1958 PROJ. NO. C18-30.

