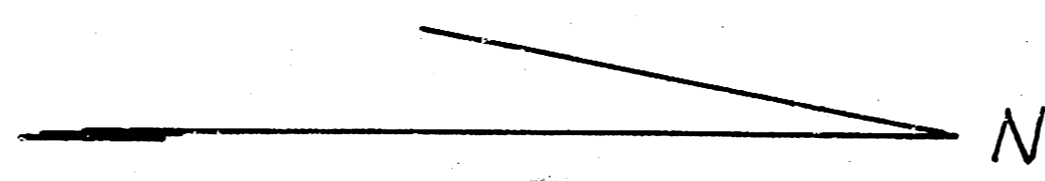


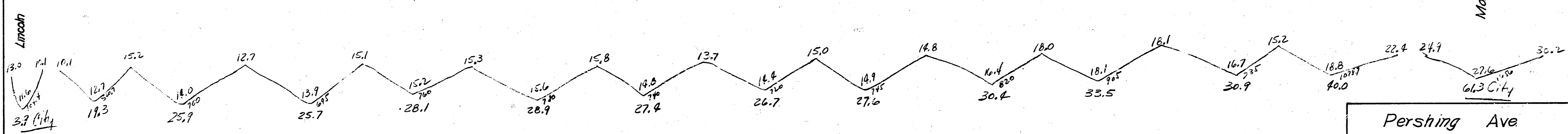
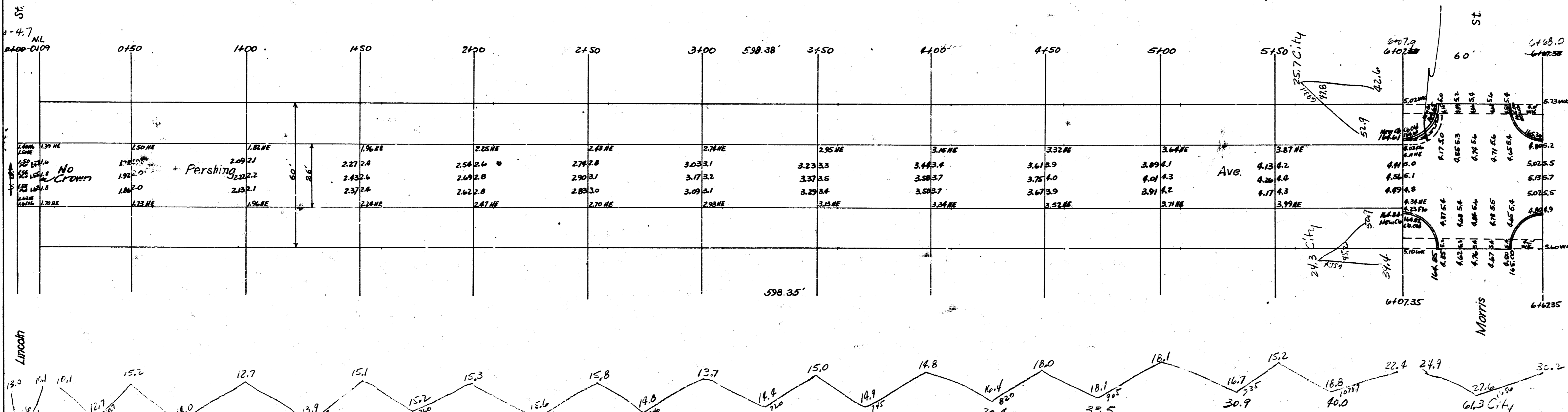
B.M. 16737 "T" in Tray top hydr. N.W. Cor. Pershing & Morris



Prop	City
19.3	3.9
25.9	61.3
25.7	25.7
28.1	24.3
28.9	
27.4	115.2
26.7	+10%
27.6	126.7 Cu. Yds.
30.4	
33.5	
30.9	
60.2	
344.4	
+10%	
378.8	Cu. Yds.

Note: Remove exist. & wk. across intersection E. & W. side Pershing

Note: Remove exist. cb. & gtr. in return to pave intersection & replace with Int. cb., 15' R.



Pershing Ave
 N.L. Morris ~ N.L. Lincoln
 26' Conc.
 City of Wichita, Kansas
 L.K. White City Engineer
 August 1948 Project C18-107

4 1 2 50

