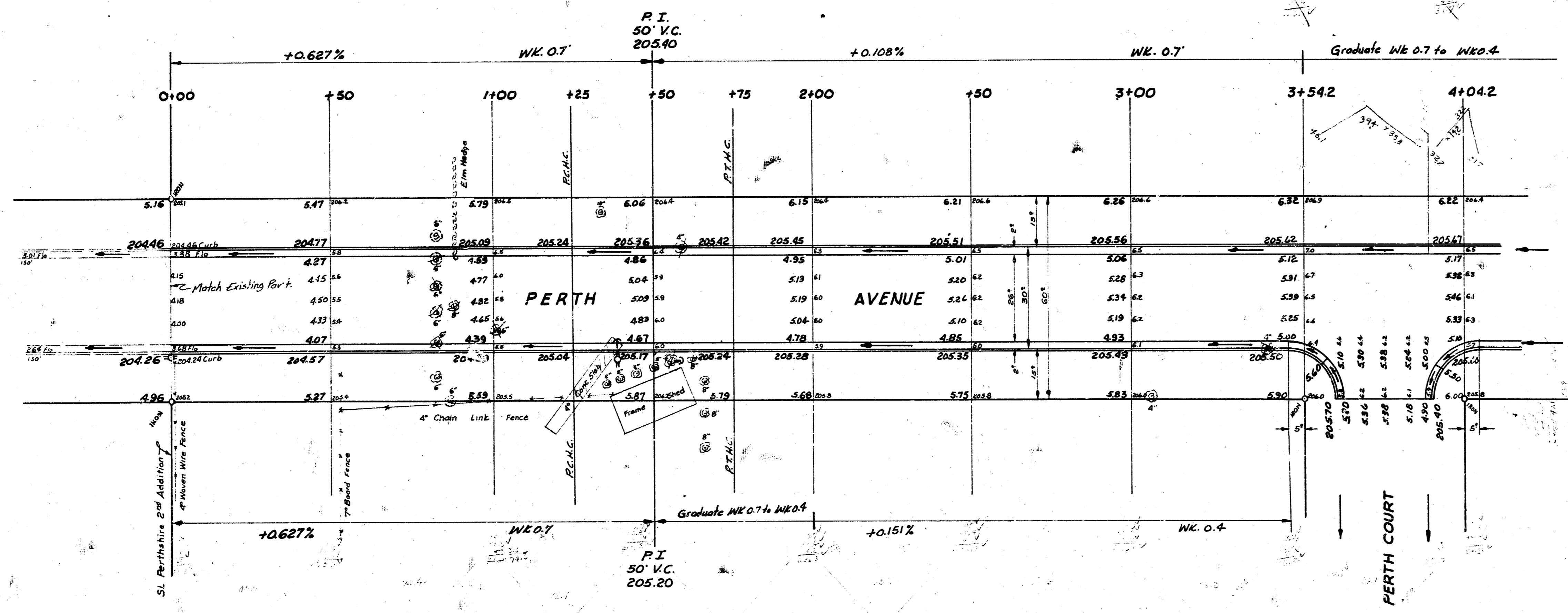
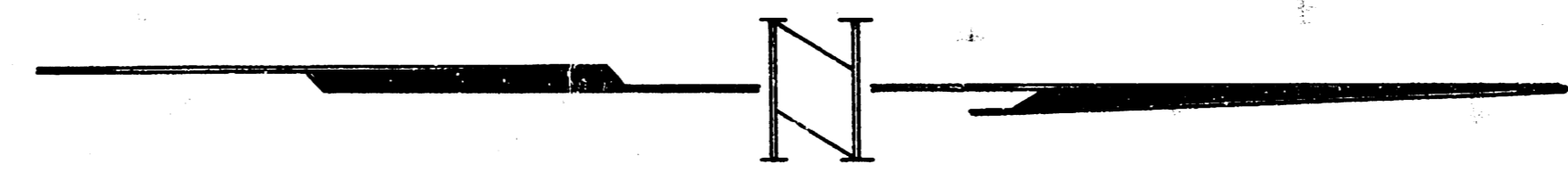


B.M. - 204.45 "R" in Ritchie 150' N of NL Polo W. cb. Perth.
 B.M. - 205.17 "R" in Ritchie S. cb. Polo WL M^c Ewens 2nd Addition.
 B.M. - 208.67 "T" in Tray Fire Hydrant SW cor. 13th & Perth.



244
 157
 150
 157

Sheet 1 of 2.

PERTH AVENUE
 SL Perthshire 2nd Addn to SL 13th.
 26-2-30AC.
 CITY OF WICHITA, KANSAS
 B. E. SMITH CITY ENGINEER
 MAY 1958 PROJ. NO. C18-29.

