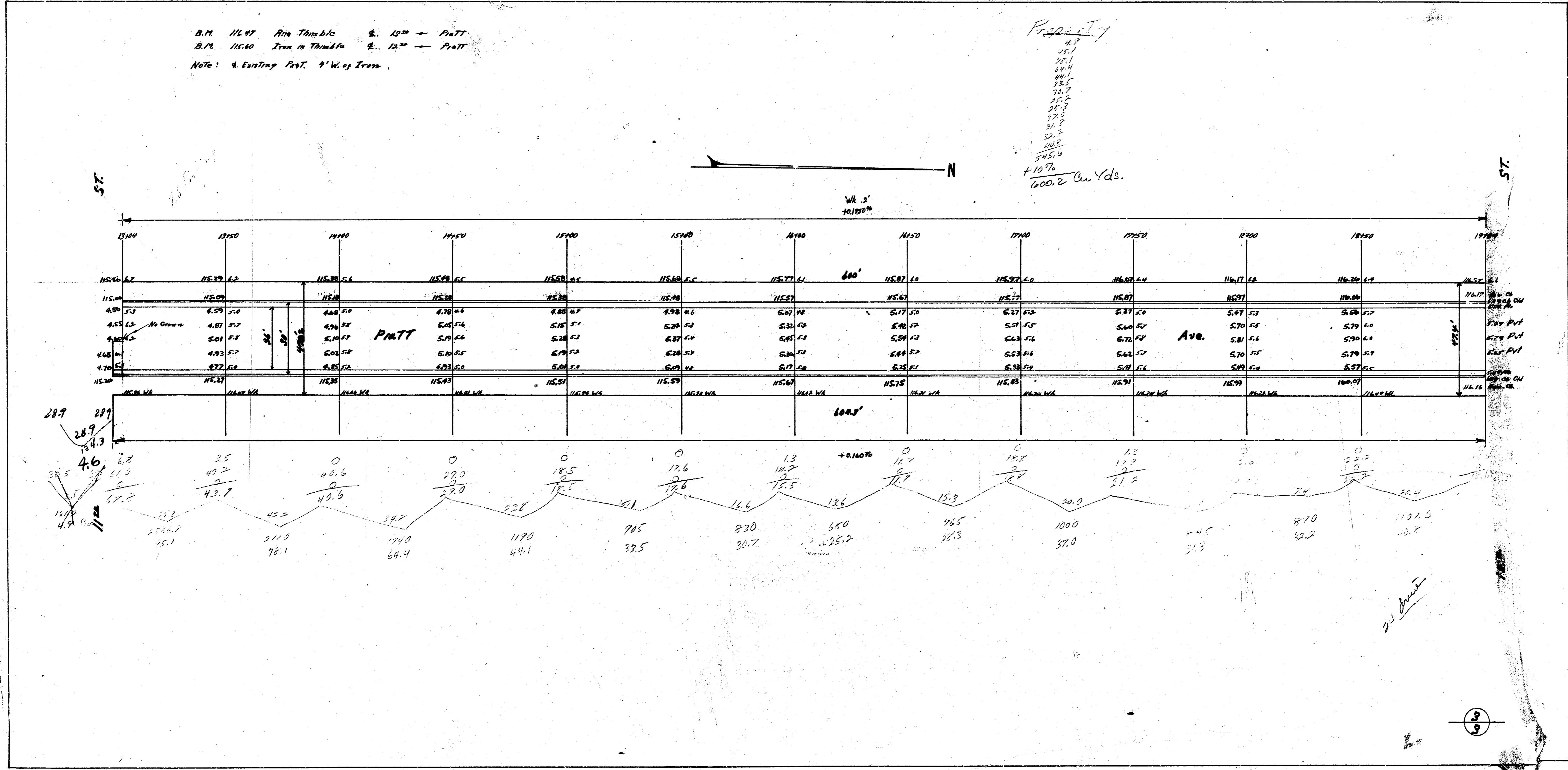
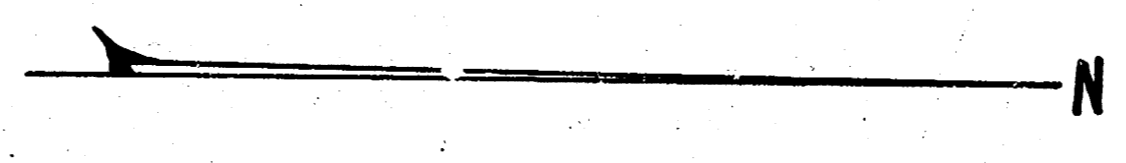


B.M. 11647 Iron Thumb 6. 12" - Part
 B.M. 11648 Iron in Thumb 6. 12" - Part
 Note: 4. Existing Part. 4' W. of Iron.

PROPERTY
 4.7
 15.1
 12.1
 18.4
 44.1
 23.5
 24.7
 25.2
 25.9
 27.5
 27.5
 30.8
 28.8
 545.6
 +10%
 600.2 Cu Yds.

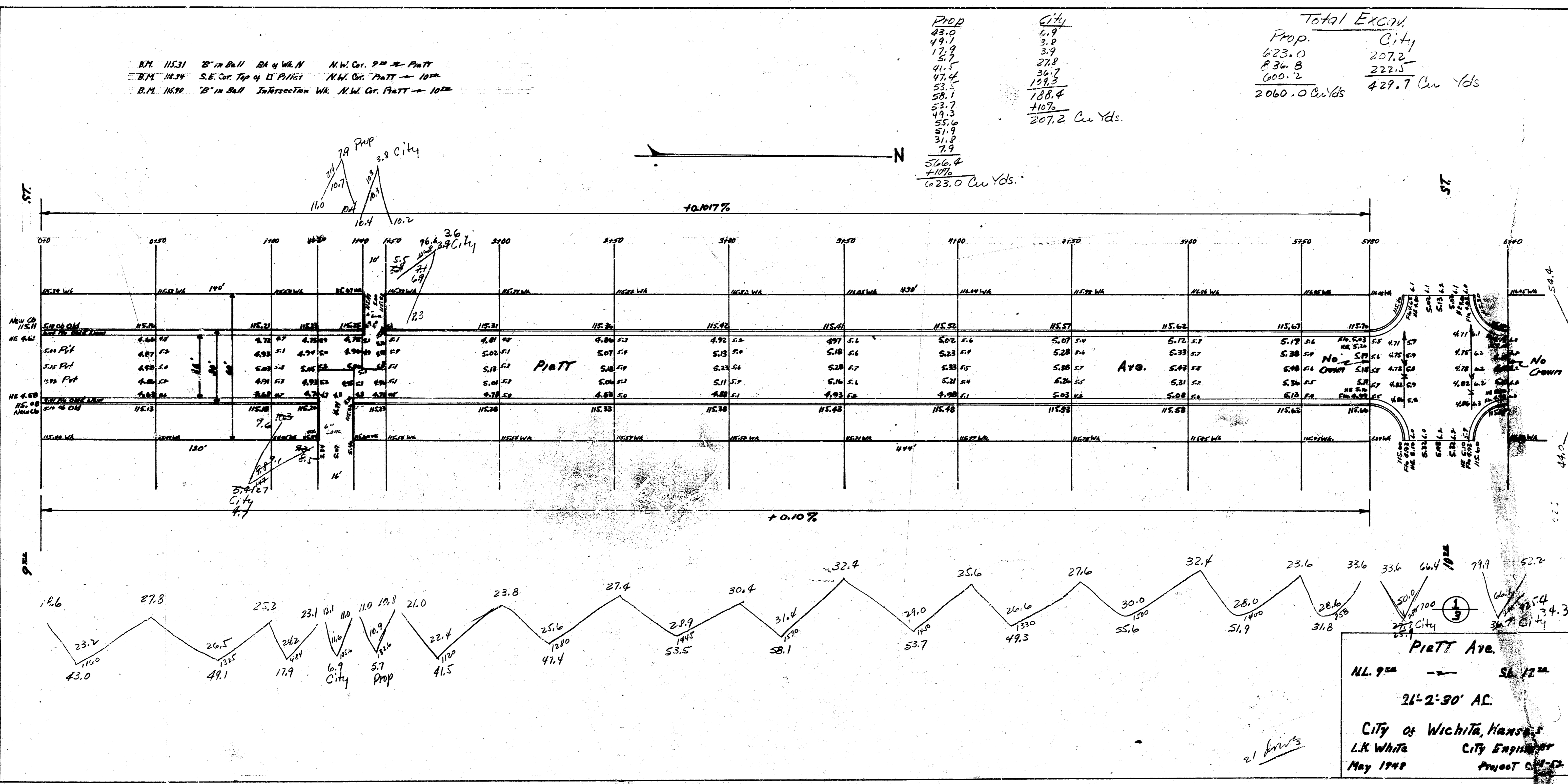


4 12 2 3

B.M. 11531 2" in Bull. EA of W.M. N.W. Cor. 9th & Piatt
 B.M. 11532 S.E. Cor. Top of D. Piatt N.W. Cor. Piatt - 10th
 B.M. 11530 2" in Bull. Intersection W.M. N.W. Cor. Piatt - 10th

PROP	CITY
43.0	4.9
49.1	3.8
17.9	3.9
51.5	27.8
47.4	34.7
53.5	198.3
58.1	188.4
53.7	+10%
49.3	207.2 Cu Yds.
55.6	
51.9	
31.9	
7.9	
546.4	
+10%	
6023.0 Cu Yds.	

Total Excav.	
PROP.	CITY
623.0	207.2
834.8	222.5
600.2	
2060.0 Cu Yds.	429.7 Cu Yds.



Piatt Ave.
 N.L. 9th - S.L. 12th
 21'-2'-30" AC.
 City of Wichita, Kansas
 L.R. White City Engineer
 May 1948
 Project 611-12

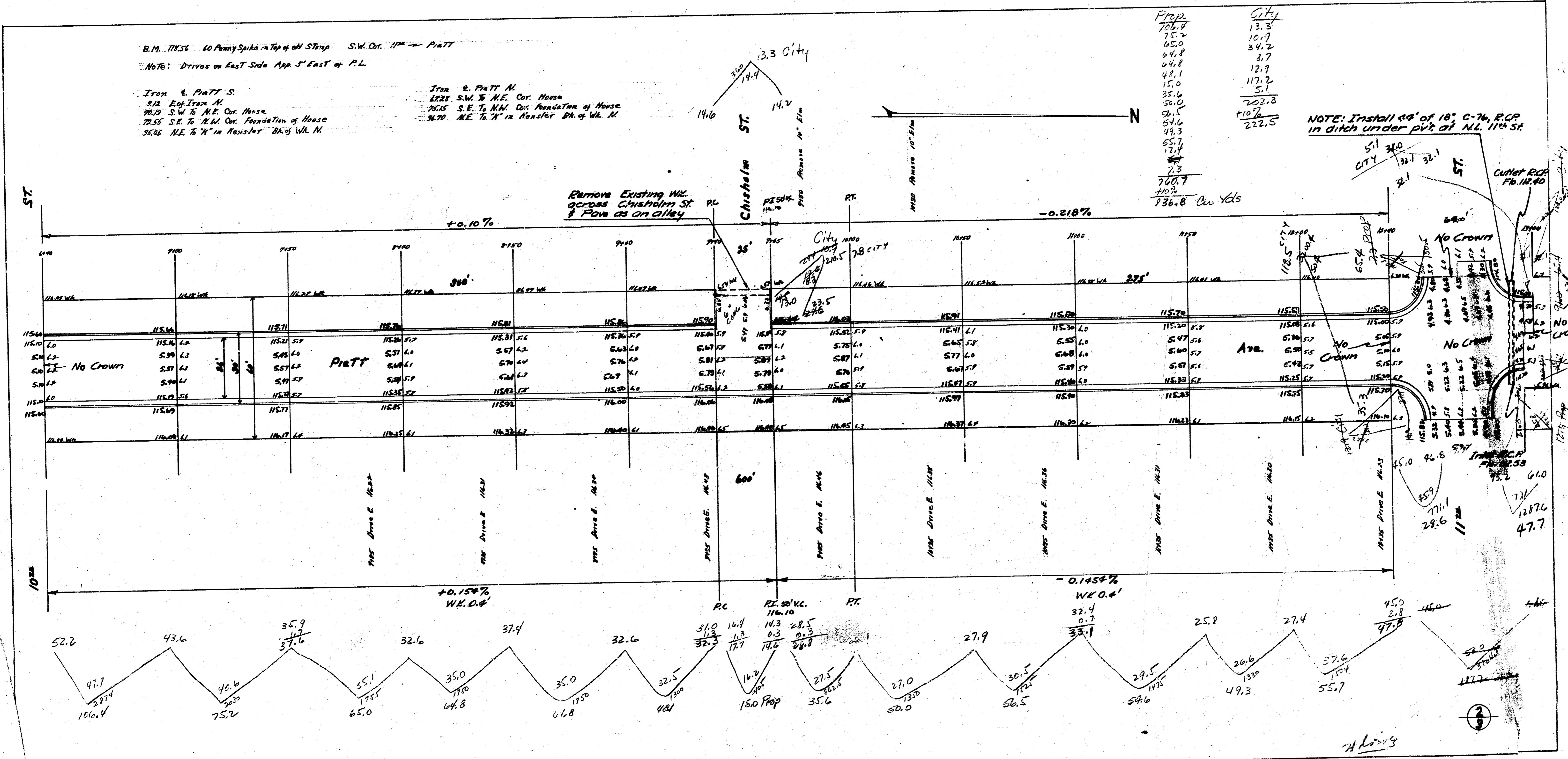
B.M. 115K... 60 Penny Spike in Top of old Street S.W. Cor. 11th & Pratt
 NOTE: Drives on East Side App 5' East of P.L.

Iron & Pratt S.
 312 Eop Iron M.
 7819 S.W. 1/4 N.E. Cor. House
 7835 S.E. 1/4 N.W. Cor. Foundation of House
 3585 N.E. 1/4 " in Monster Bldg W.A. M.

Iron & Pratt M.
 1228 S.W. 1/4 N.E. Cor. House
 2615 S.E. 1/4 N.W. Cor. Foundation of House
 3470 N.E. 1/4 " in Monster Bldg of W.A. M.

PROP.	CITY
704.4	13.3
75.2	10.7
65.0	34.2
64.8	8.7
44.1	12.9
15.0	5.1
35.6	
50.0	
21.5	
51.6	
49.3	
7.3	
7.3	
705.7	222.3
40.2	10%
736.8	222.5

NOTE: Install 60' of 18" C-76 RCP in ditch under pit at N.L. 114 SF



A. Long