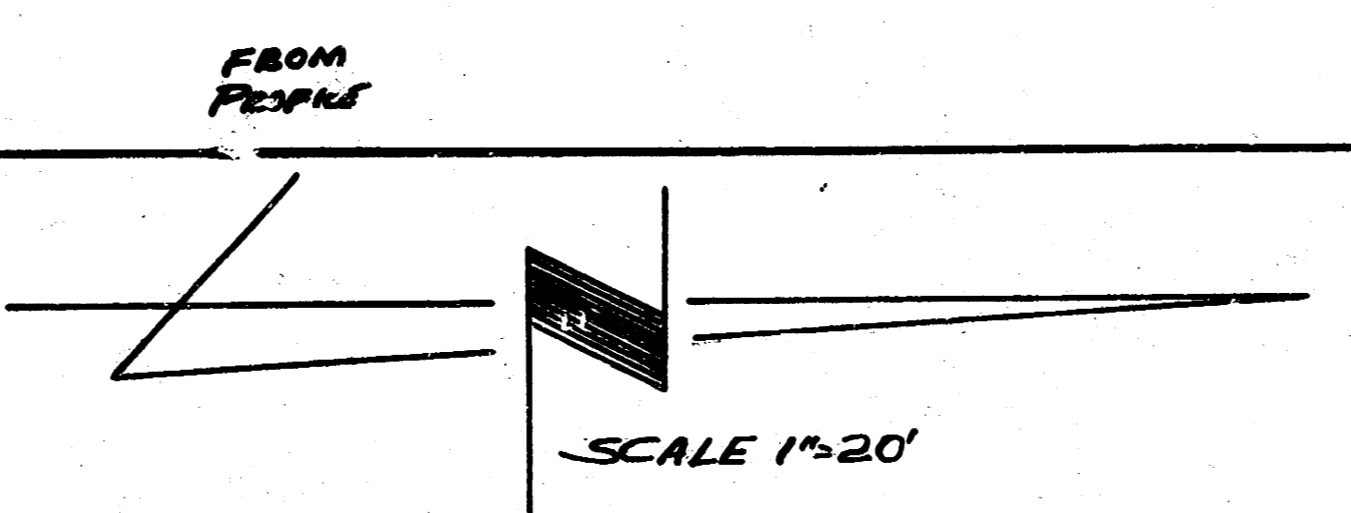
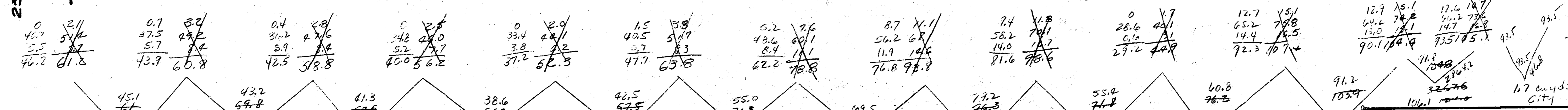
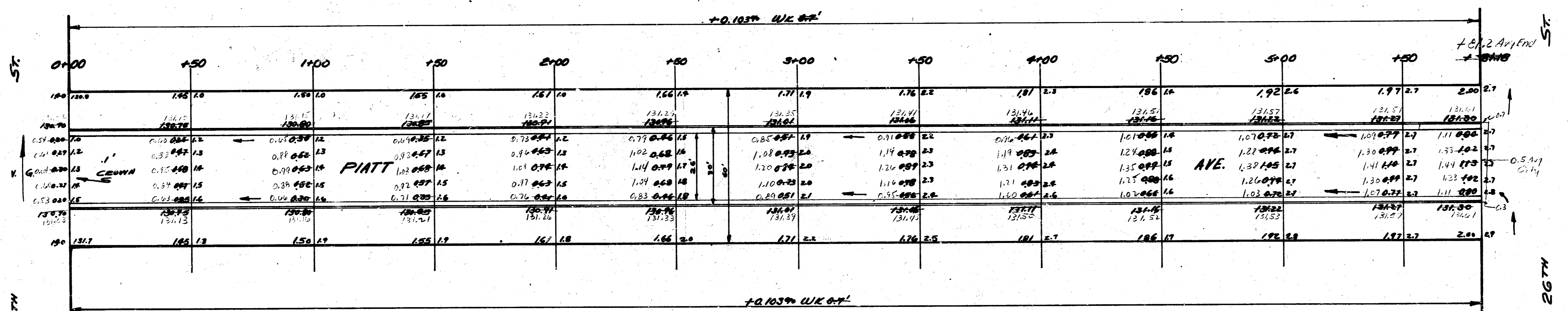


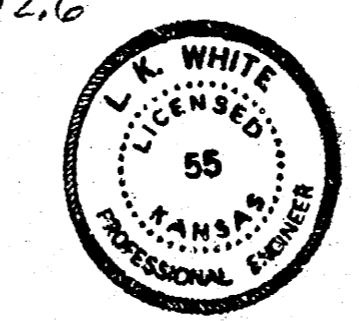
B.M. 144.65 STANDARD SE COR 25TH & GROVE - This BM reset
 B.M. 127.34 SE. cor. step No. 2467 N. PIATT
 (B.M. 127.34 is 0.15 higher than old C. Grove & 25th 144.65)
 Put grades reset from new cb. elevations taken in
 the field after put was constructed



PROPERTY
 112.0
 112.7
 106.5
 100.6
 106.5
 132.0
 159.0
 158.3
 135.0
 101.1
 146.1
 121.0
 1598.6
 152.2
 1758.5 Cu Yds Exc

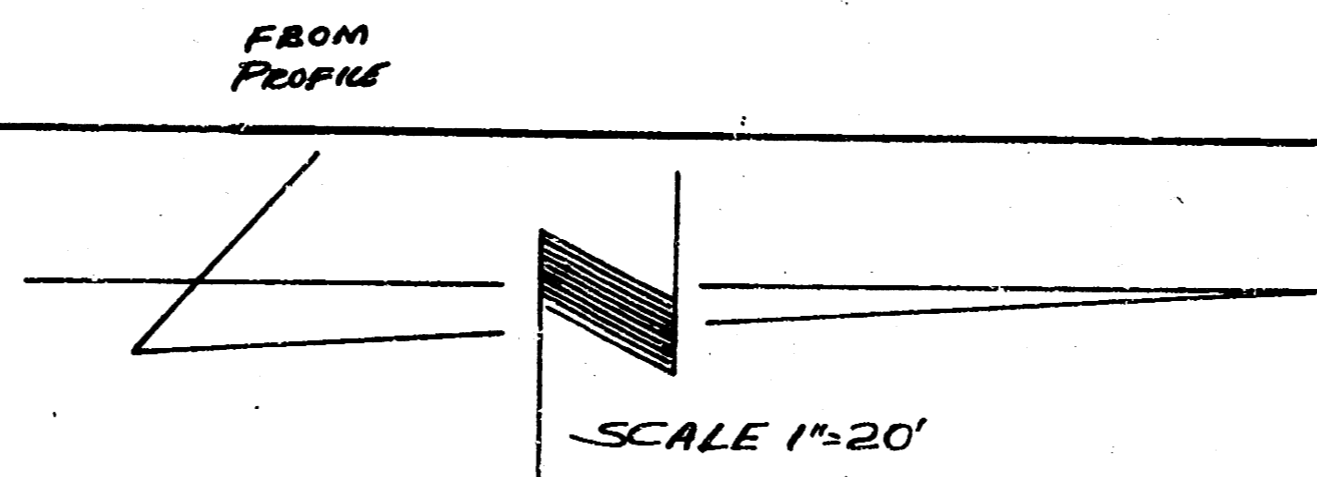


PIATT
 NL 25TH TO SL 26TH
 26-2-30 AC
 CITY OF WICHITA KANSAS
 LK WHITE CITY ENGINEER
 JUNE 12 1952 Proj. No. CH-395



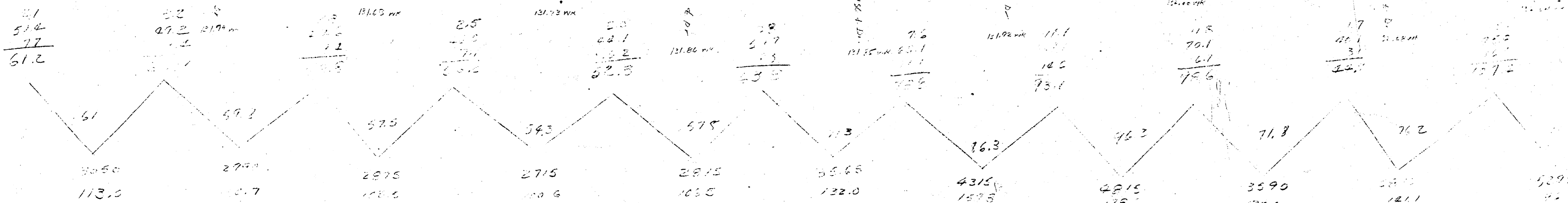
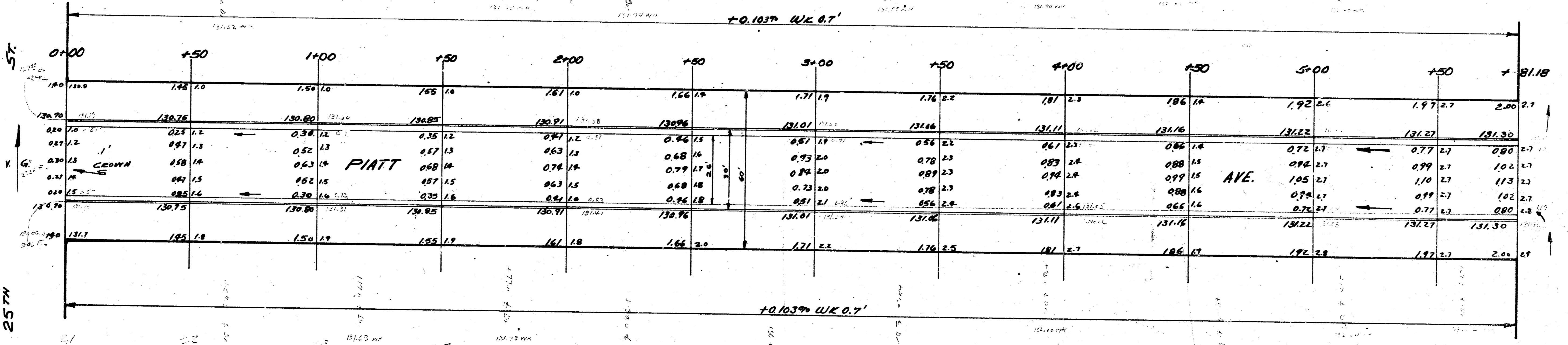
Notes from Plans: Plans, Grades & Exc. Dist. 2/19/52

BM. 19859 STANDARD SE COR 25TH & GENE
 ELEVATION 26.00
 (ELEVATION HIGHER THAN STA 2 GROVE ST (14.65)
 East elevations to be finished C/S

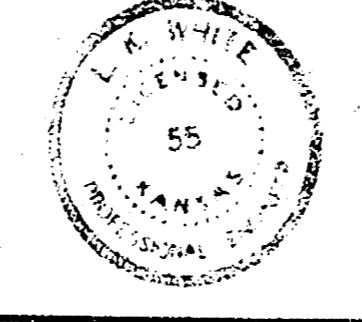


BM. 12938 E. Cor. Conc. Slab Hrs. 2469 N. Piatt

25TH ST
 110.7
 112.5
 114.3
 116.1
 117.9
 119.7
 121.5
 123.3
 125.1
 126.9
 128.7
 130.5
 132.3
 134.1
 135.9
 137.7
 139.5
 141.3
 143.1
 144.9
 146.7
 148.5
 150.3
 152.1
 153.9
 155.7
 157.5
 159.3
 161.1
 162.9
 164.7
 166.5
 168.3
 170.1
 171.9
 173.7
 175.5
 177.3
 179.1
 180.9
 182.7
 184.5
 186.3
 188.1
 189.9
 191.7
 193.5
 195.3
 197.1
 198.9
 200.7
 202.5
 204.3
 206.1
 207.9
 209.7
 211.5
 213.3
 215.1
 216.9
 218.7
 220.5
 222.3
 224.1
 225.9
 227.7
 229.5
 231.3
 233.1
 234.9
 236.7
 238.5
 240.3
 242.1
 243.9
 245.7
 247.5
 249.3
 251.1
 252.9
 254.7
 256.5
 258.3
 260.1
 261.9
 263.7
 265.5
 267.3
 269.1
 270.9
 272.7
 274.5
 276.3
 278.1
 279.9
 281.7
 283.5
 285.3
 287.1
 288.9
 290.7
 292.5
 294.3
 296.1
 297.9
 299.7
 301.5
 303.3
 305.1
 306.9
 308.7
 310.5
 312.3
 314.1
 315.9
 317.7
 319.5
 321.3
 323.1
 324.9
 326.7
 328.5
 330.3
 332.1
 333.9
 335.7
 337.5
 339.3
 341.1
 342.9
 344.7
 346.5
 348.3
 350.1
 351.9
 353.7
 355.5
 357.3
 359.1
 360.9
 362.7
 364.5
 366.3
 368.1
 369.9
 371.7
 373.5
 375.3
 377.1
 378.9
 380.7
 382.5
 384.3
 386.1
 387.9
 389.7
 391.5
 393.3
 395.1
 396.9
 398.7
 400.5
 402.3
 404.1
 405.9
 407.7
 409.5
 411.3
 413.1
 414.9
 416.7
 418.5
 420.3
 422.1
 423.9
 425.7
 427.5
 429.3
 431.1
 432.9
 434.7
 436.5
 438.3
 440.1
 441.9
 443.7
 445.5
 447.3
 449.1
 450.9
 452.7
 454.5
 456.3
 458.1
 459.9
 461.7
 463.5
 465.3
 467.1
 468.9
 470.7
 472.5
 474.3
 476.1
 477.9
 479.7
 481.5
 483.3
 485.1
 486.9
 488.7
 490.5
 492.3
 494.1
 495.9
 497.7
 499.5
 501.3
 503.1
 504.9
 506.7
 508.5
 510.3
 512.1
 513.9
 515.7
 517.5
 519.3
 521.1
 522.9
 524.7
 526.5
 528.3
 530.1
 531.9
 533.7
 535.5
 537.3
 539.1
 540.9
 542.7
 544.5
 546.3
 548.1
 549.9
 551.7
 553.5
 555.3
 557.1
 558.9
 560.7
 562.5
 564.3
 566.1
 567.9
 569.7
 571.5
 573.3
 575.1
 576.9
 578.7
 580.5
 582.3
 584.1
 585.9
 587.7
 589.5
 591.3
 593.1
 594.9
 596.7
 598.5
 600.3
 602.1
 603.9
 605.7
 607.5
 609.3
 611.1
 612.9
 614.7
 616.5
 618.3
 620.1
 621.9
 623.7
 625.5
 627.3
 629.1
 630.9
 632.7
 634.5
 636.3
 638.1
 639.9
 641.7
 643.5
 645.3
 647.1
 648.9
 650.7
 652.5
 654.3
 656.1
 657.9
 659.7
 661.5
 663.3
 665.1
 666.9
 668.7
 670.5
 672.3
 674.1
 675.9
 677.7
 679.5
 681.3
 683.1
 684.9
 686.7
 688.5
 690.3
 692.1
 693.9
 695.7
 697.5
 699.3
 701.1
 702.9
 704.7
 706.5
 708.3
 710.1
 711.9
 713.7
 715.5
 717.3
 719.1
 720.9
 722.7
 724.5
 726.3
 728.1
 729.9
 731.7
 733.5
 735.3
 737.1
 738.9
 740.7
 742.5
 744.3
 746.1
 747.9
 749.7
 751.5
 753.3
 755.1
 756.9
 758.7
 760.5
 762.3
 764.1
 765.9
 767.7
 769.5
 771.3
 773.1
 774.9
 776.7
 778.5
 780.3
 782.1
 783.9
 785.7
 787.5
 789.3
 791.1
 792.9
 794.7
 796.5
 798.3
 800.1
 801.9
 803.7
 805.5
 807.3
 809.1
 810.9
 812.7
 814.5
 816.3
 818.1
 819.9
 821.7
 823.5
 825.3
 827.1
 828.9
 830.7
 832.5
 834.3
 836.1
 837.9
 839.7
 841.5
 843.3
 845.1
 846.9
 848.7
 850.5
 852.3
 854.1
 855.9
 857.7
 859.5
 861.3
 863.1
 864.9
 866.7
 868.5
 870.3
 872.1
 873.9
 875.7
 877.5
 879.3
 881.1
 882.9
 884.7
 886.5
 888.3
 890.1
 891.9
 893.7
 895.5
 897.3
 899.1
 900.9
 902.7
 904.5
 906.3
 908.1
 909.9
 911.7
 913.5
 915.3
 917.1
 918.9
 920.7
 922.5
 924.3
 926.1
 927.9
 929.7
 931.5
 933.3
 935.1
 936.9
 938.7
 940.5
 942.3
 944.1
 945.9
 947.7
 949.5
 951.3
 953.1
 954.9
 956.7
 958.5
 960.3
 962.1
 963.9
 965.7
 967.5
 969.3
 971.1
 972.9
 974.7
 976.5
 978.3
 980.1
 981.9
 983.7
 985.5
 987.3
 989.1
 990.9
 992.7
 994.5
 996.3
 998.1
 1000.0

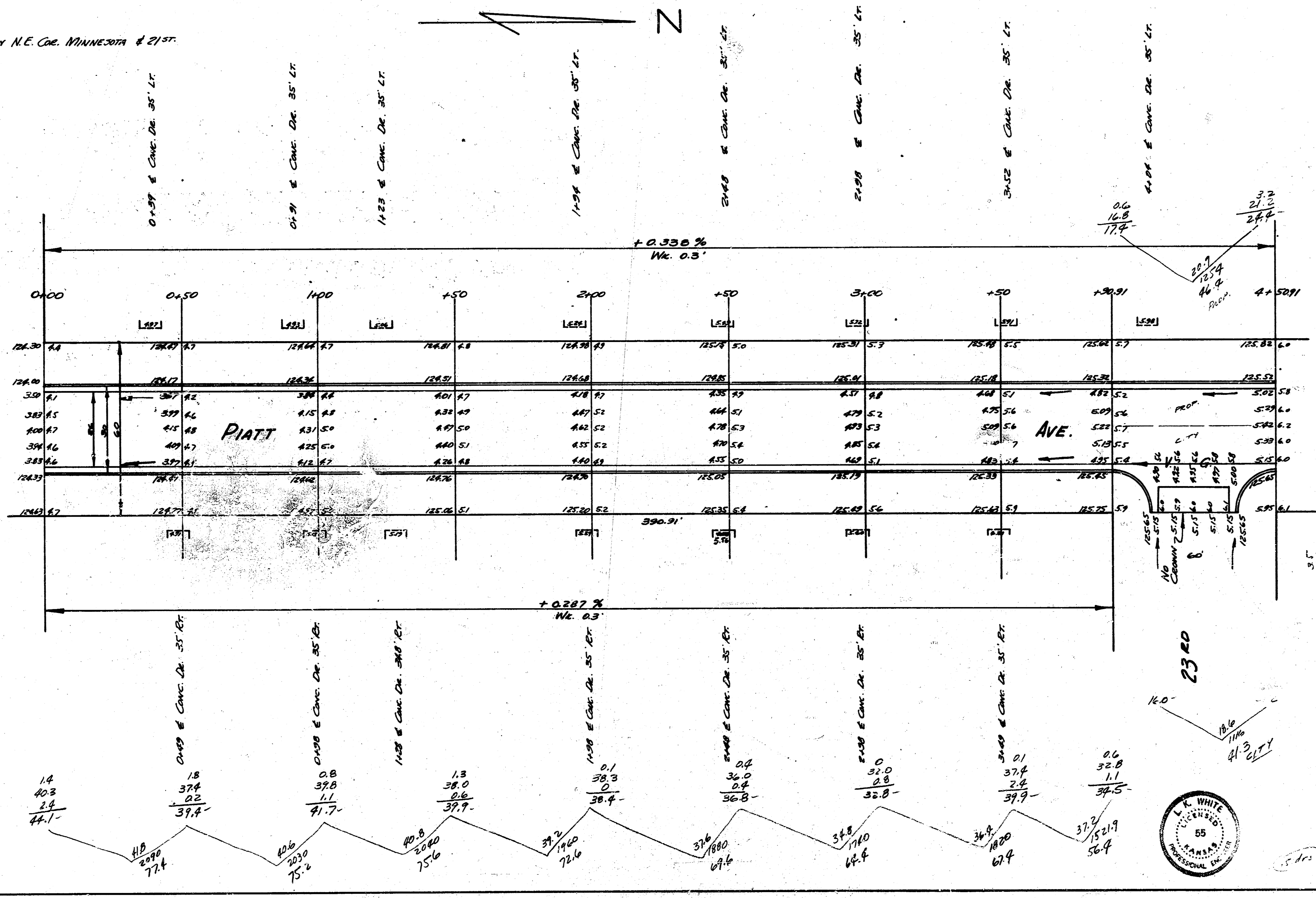


PIATT
 NL 25TH TO SL 26TH
 26-2-30 A.C
 CITY OF WICHITA KANSAS
 L.K. WHITE CITY ENGINEER
 JUNE 12 1952 Prov. No. C11-345



B.M. 125.12 "T" in Top N.E. Cor. MINNEAPOLIS & 21ST.

22ND ST.



E.I.C.

Point	City
724	41.3
753	22.3
756	68.6
786	+10.0
842	75.5
678	
56	
862	
125.0	
+10.0	
135.0	

PIATT AVE.
 N.L. 22ND TO N.L. 23RD
 26'-2'-30" A.C.
 CITY OF WICHITA, KANSAS
 L.K. WHITE CITY ENGINEER
 AUGUST 1951 PROJ. C11-104

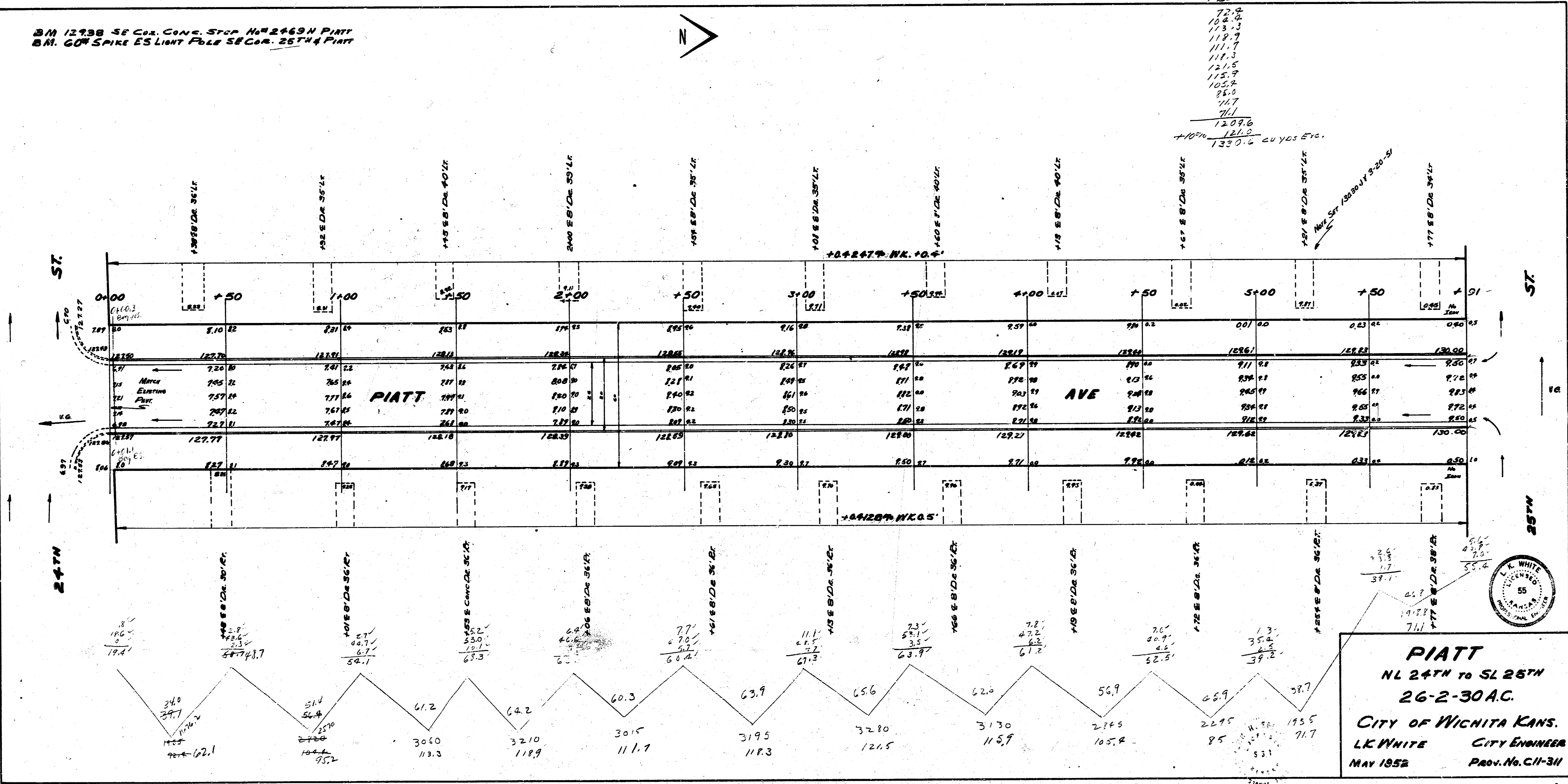


E-3

B.M. 12938 SE Cor. Conc. Stop No. 2463H PIATT
 B.M. GUN SPIKE ES LIGHT FOLE SE Cor. 25TH & PIATT

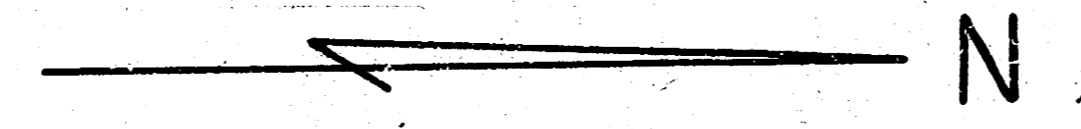


PROP
 72.2
 104.2
 113.3
 119.7
 119.3
 124.5
 115.9
 105.4
 75.0
 71.1
 1209.6
 121.0
 1330.5 cu yds ETC.



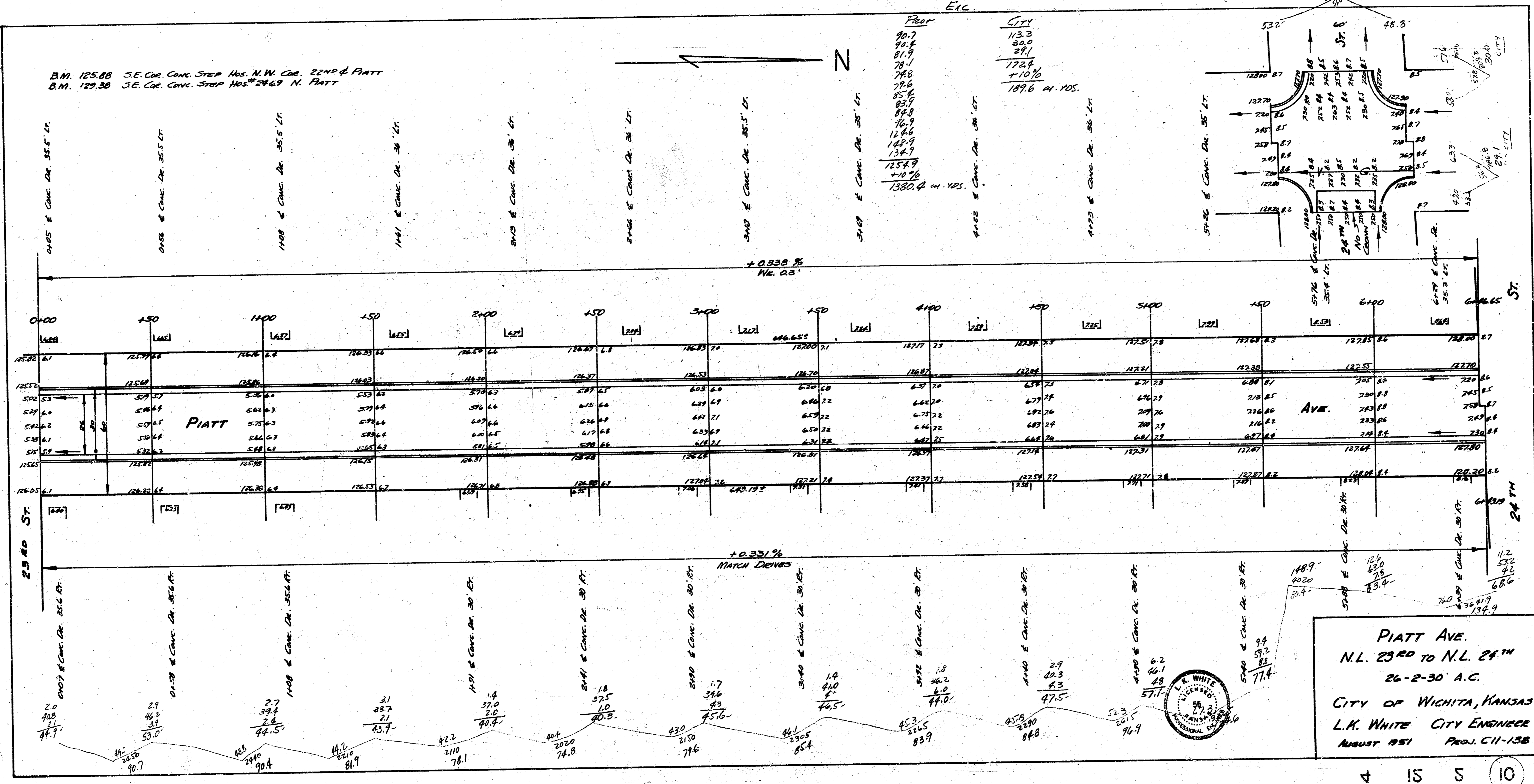
PIATT
 NL 24TH TO SL 25TH
 26-2-30 A.C.
 CITY OF WICHITA KANS.
 L.K. WHITE CITY ENGINEER
 MAY 1952 Prov. No. CU-311

B.M. 125.88 S.E. Cor. Conc. Strip Nos. N.W. Cor. 22nd & Piatt
 B.M. 129.38 S.E. Cor. Conc. Strip Nos. 24th & N. Piatt



Peer
 90.7
 90.4
 81.9
 78.4
 78.8
 79.6
 85.6
 83.9
 84.9
 76.9
 124.2
 148.9
 134.9
 125.49
 +10.26
 1380.4 m. 105.

City
 113.3
 30.0
 24.1
 172.4
 +10.16
 189.6 m. 105.



PIATT AVE.
 N.L. 23rd TO N.L. 24th
 26-2-30 A.C.
 CITY OF WICHITA, KANSAS
 L.K. WHITE CITY ENGINEER
 AUGUST 1951 PROJ. C11-158

